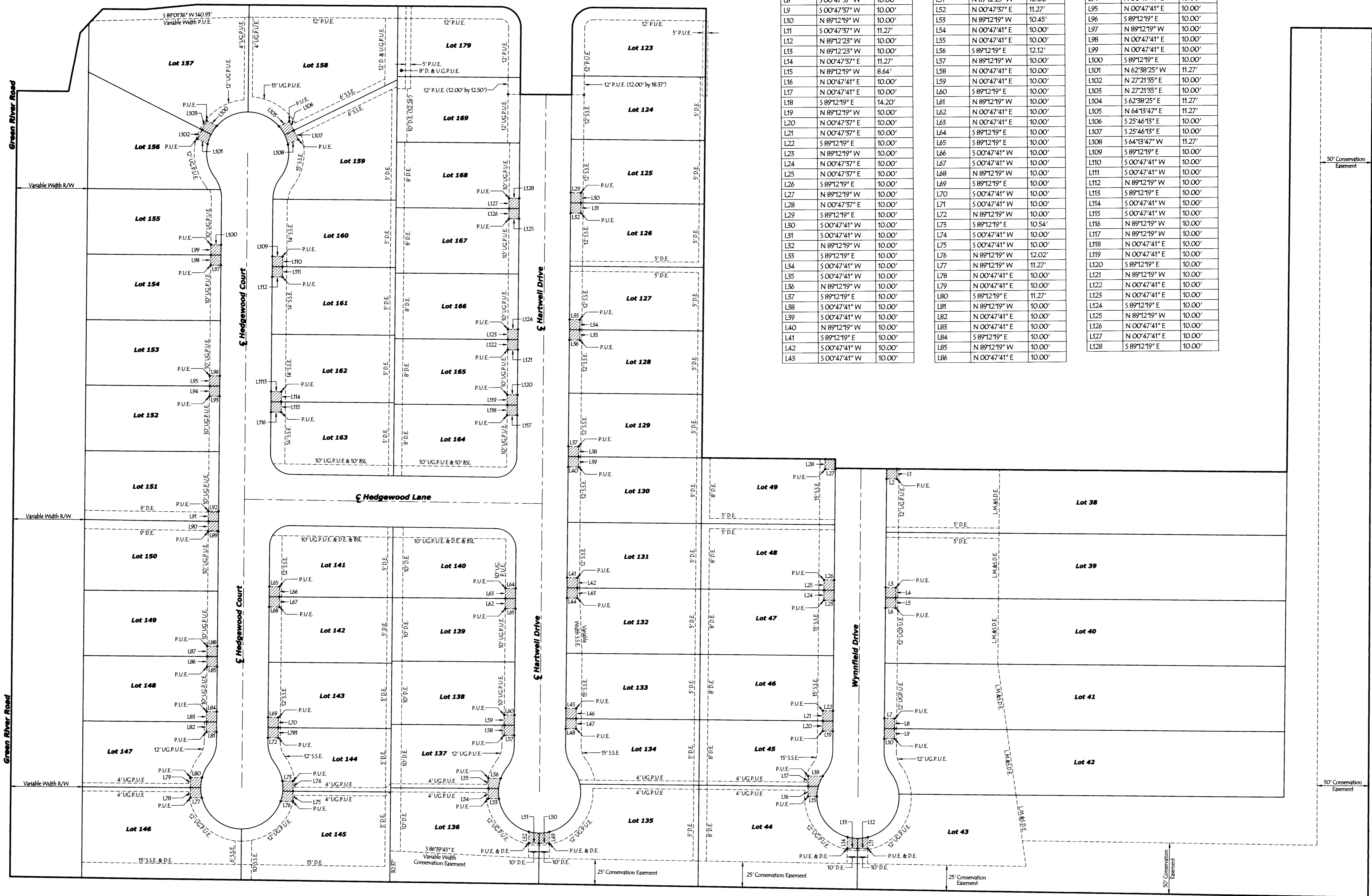
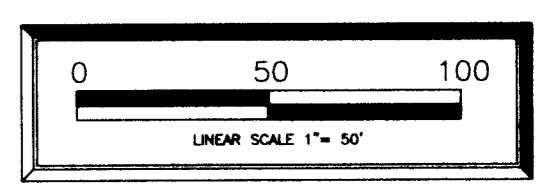
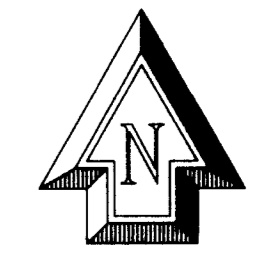


WYNNFIELD SUBDIVISION SECTION 7



Isolated Public Utility Easement Line Table

NUMBER	DIRECTION	DISTANCE	NUMBER	DIRECTION	DISTANCE	NUMBER	DIRECTION	DISTANCE
L1	S 00°47'37" W	10.00'	L44	N 89°12'19" W	10.00'	L87	N 00°47'41" E	10.00'
L2	N 89°12'23" W	10.00'	L45	S 89°12'19" E	10.00'	L88	S 89°12'19" E	10.00'
L3	S 89°12'19" E	10.00'	L46	S 00°47'41" W	10.00'	L89	N 89°12'19" W	10.00'
L4	S 00°47'37" W	10.00'	L47	S 00°47'41" W	10.00'	L90	N 00°47'41" E	10.00'
L5	S 00°47'37" W	10.00'	L48	N 89°12'19" W	10.00'	L91	N 00°47'41" E	10.00'
L6	N 89°12'19" W	10.00'	L49	S 00°47'41" W	11.27'	L92	S 89°12'19" E	10.00'
L7	S 89°12'19" E	10.00'	L50	N 89°12'23" W	10.00'	L93	N 89°12'19" W	10.00'
L8	S 00°47'37" W	10.00'	L51	N 89°12'23" W	10.00'	L94	N 00°47'41" E	10.00'
L9	S 00°47'37" W	10.00'	L52	N 00°47'37" E	11.27'	L95	N 00°47'41" E	10.00'
L10	N 89°12'19" W	10.00'	L53	N 89°12'19" W	10.45'	L96	S 89°12'19" E	10.00'
L11	S 00°47'37" W	11.27'	L54	N 00°47'41" E	10.00'	L97	N 89°12'19" W	10.00'
L12	N 89°12'23" W	10.00'	L55	N 00°47'41" E	10.00'	L98	N 00°47'41" E	10.00'
L13	N 89°12'23" W	10.00'	L56	S 89°12'19" E	12.12'	L99	N 00°47'41" E	10.00'
L14	N 00°47'37" E	11.27'	L57	N 89°12'19" W	10.00'	L100	S 89°12'19" E	10.00'
L15	N 89°12'19" W	8.64'	L58	N 00°47'41" E	10.00'	L101	N 62°38'25" W	11.27'
L16	N 00°47'41" E	10.00'	L59	N 00°47'41" E	10.00'	L102	N 27°21'35" E	10.00'
L17	N 00°47'41" E	10.00'	L60	S 89°12'19" E	10.00'	L103	N 27°21'35" E	10.00'
L18	S 89°12'19" E	14.20'	L61	N 89°12'19" W	10.00'	L104	S 62°38'25" E	11.27'
L19	N 89°12'19" W	10.00'	L62	N 00°47'41" E	10.00'	L105	N 64°13'47" E	11.27'
L20	N 00°47'37" E	10.00'	L63	N 00°47'41" E	10.00'	L106	S 25°46'15" E	10.00'
L21	N 00°47'37" E	10.00'	L64	S 89°12'19" E	10.00'	L107	S 25°46'15" E	10.00'
L22	S 89°12'19" E	10.00'	L65	S 89°12'19" E	10.00'	L108	S 64°13'47" W	11.27'
L23	N 89°12'19" W	10.00'	L66	S 00°47'41" W	10.00'	L109	S 89°12'19" E	10.00'
L24	N 00°47'37" E	10.00'	L67	S 00°47'41" W	10.00'	L110	S 00°47'41" W	10.00'
L25	N 00°47'37" E	10.00'	L68	N 89°12'19" W	10.00'	L111	S 00°47'41" W	10.00'
L26	S 89°12'19" E	10.00'	L69	S 89°12'19" E	10.00'	L112	N 89°12'19" W	10.00'
L27	N 89°12'19" W	10.00'	L70	S 00°47'41" W	10.00'	L113	S 89°12'19" E	10.00'
L28	N 00°47'37" E	10.00'	L71	S 00°47'41" W	10.00'	L114	S 00°47'41" W	10.00'
L29	S 89°12'19" E	10.00'	L72	N 89°12'19" W	10.00'	L115	S 00°47'41" W	10.00'
L30	S 00°47'41" W	10.00'	L73	S 89°12'19" E	10.54'	L116	N 89°12'19" W	10.00'
L31	S 00°47'41" W	10.00'	L74	S 00°47'41" W	10.00'	L117	N 89°12'19" W	10.00'
L32	N 89°12'19" W	10.00'	L75	S 00°47'41" W	10.00'	L118	N 00°47'41" E	10.00'
L33	S 89°12'19" E	10.00'	L76	N 89°12'19" W	12.02'	L119	N 00°47'41" E	10.00'
L34	S 00°47'41" W	10.00'	L77	N 89°12'19" W	11.27'	L120	S 89°12'19" E	10.00'
L35	S 00°47'41" W	10.00'	L78	N 00°47'41" E	10.00'	L121	N 89°12'19" W	10.00'
L36	N 89°12'19" W	10.00'	L79	N 00°47'41" E	10.00'	L122	N 00°47'41" E	10.00'
L37	S 89°12'19" E	10.00'	L80	S 89°12'19" E	11.27'	L123	N 00°47'41" E	10.00'
L38	S 00°47'41" W	10.00'	L81	N 89°12'19" W	10.00'	L124	S 89°12'19" E	10.00'
L39	S 00°47'41" W	10.00'	L82	N 00°47'41" E	10.00'	L125	N 89°12'19" W	10.00'
L40	N 89°12'19" W	10.00'	L83	N 00°47'41" E	10.00'	L126	N 00°47'41" E	10.00'
L41	S 89°12'19" E	10.00'	L84	S 89°12'19" E	10.00'	L127	N 00°47'41" E	10.00'
L42	S 00°47'41" W	10.00'	L85	N 89°12'19" W	10.00'	L128	S 89°12'19" E	10.00'
L43	S 00°47'41" W	10.00'	L86	N 00°47'41" E	10.00'			

CASH WAGNER & ASSOCIATES, PC
 CONSULTING ENGINEERS & LAND SURVEYORS
 WWW.CASHWAGNER.COM

414 CITADEL CIRCLE
 SUITE B
 EVANSVILLE, IN 47715
 PH: 812.401-5561

332 THIRD AVENUE
 SUITE 13
 JABBER, IN 47546
 PH: 812.634.5015