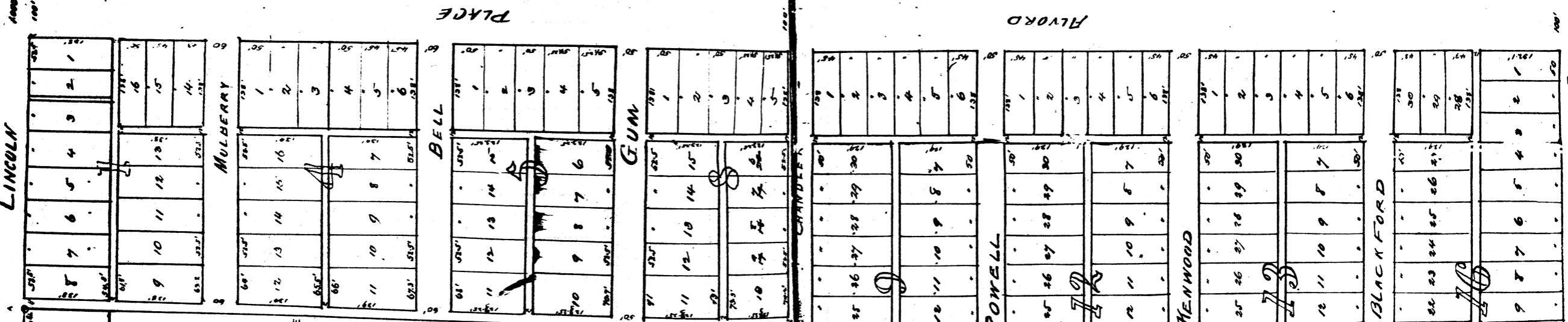
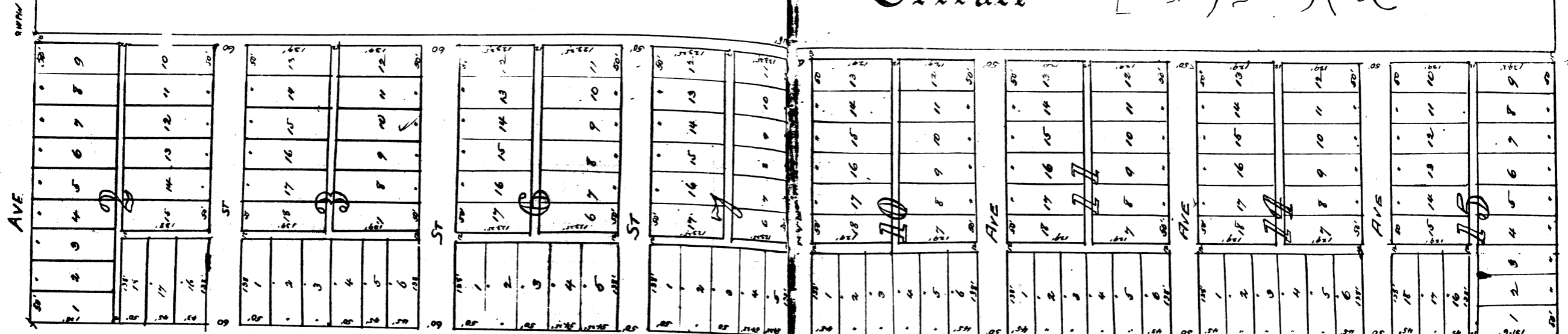


# Washington

# Terrace

Laid out by Progressive Realty Company



PLACE

ALFORD

Scale 100' = 1" Aug 7/11 in CE

Laid out by Progressive Realty Co.

A subdivision of part of the South-west Quarter of Section Twenty Eight (28) Township Six (6) South Range Ten (10) West. Beginning at a point on the 1/2 line of said Quarter Section at a point forty four (44) rods west of the South east corner of said Quarter Section. Thence North Twenty six hundred eight and 2/3 feet, 2615.76', to the North line of said Quarter Section, thence west along said North line One Thousand (1000) feet thence South Thirteen hundred and Twenty Five (1325) feet to a stone fence, thence West 332 feet to a stone fence South to the South line of said Quarter Section, thence East along said South line to a point of beginning.

Dimensions of Lots widths of Streets and Alleys numbers of Lots and Blocks are as shown on Plat below

Progressive Realty Company  
By Albert E. Stokes Pres

STATE of INDIANA COUNTY of Vanderburgh-ss

Before me the undersigned a Notary Public in and for said State and County this 4<sup>th</sup> day of June 1909 personally appeared Progressive Realty Co by Albert E. Stokes President and authorized by the operation of the Plat. Witness my hand and notarial seal this 4<sup>th</sup> day of June 1909

My commission expires May 18, 1910

Laura B. Colburn  
Notary Public

See Plat No. 77  
Book 77  
Page 158

Board of Public Works  
Landed  
June 5 1909  
Greenville Ind  
Progressive Realty Co  
Notary Public  
Christ Munderlich  
13 of Plat 7776

For Modification of Restrictions see Misc. O. pages 46, 144, 146 & 149.

Recorded Dec 9, 1911

168-593