

#38251

PLAT OF THE SUBDIVISION OF LOTS , 14-15. & 16

BLOCK 1 LOWENTHALS ADDITION

TO THE CITY OF EVANSVILLE

State of Indiana }  
Vanderburgh County } SS:

OFFICIAL:  
INTERSTATE FINANCE CORPORATION (Corp Seal)  
By Richard E. Meier  
Richard E. Meier, President

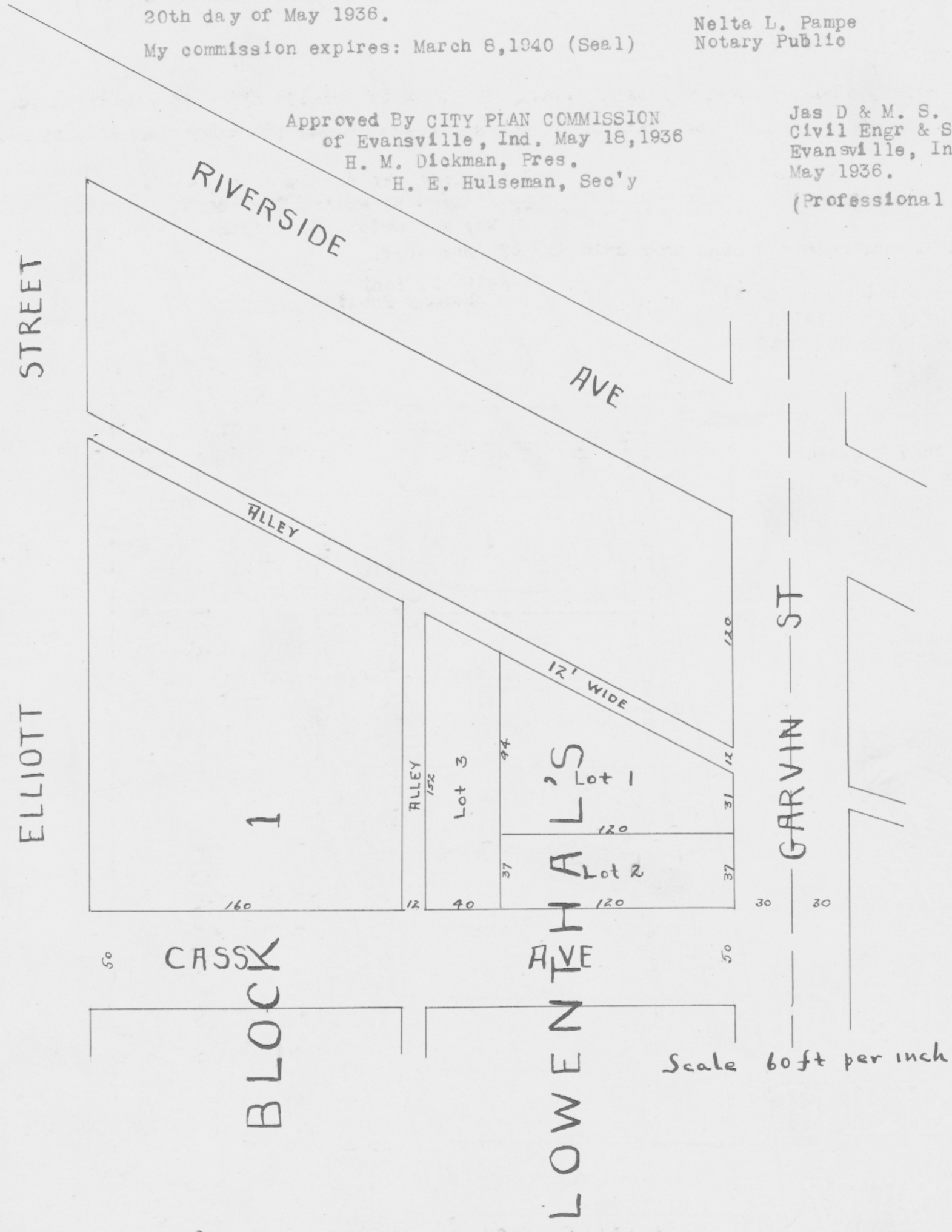
Subscribed before me, a Notary Public in and for said county and state, this  
20th day of May 1936.

My commission expires: March 8, 1940 (Seal)

Nelta L. Pampe  
Notary Public

Approved By CITY PLAN COMMISSION  
of Evansville, Ind. May 18, 1936  
H. M. Dickman, Pres.  
H. E. Hulseman, Sec'y

Jas D & M. S. Saunders  
Civil Engr & Surveyor's  
Evansville, Ind.  
May 1936.  
(Professional Engineer Seal)



Scale 60ft per inch

RECORDED.....MAY.....21, 1936.

\* Leo C Lutzewich R.V.C.