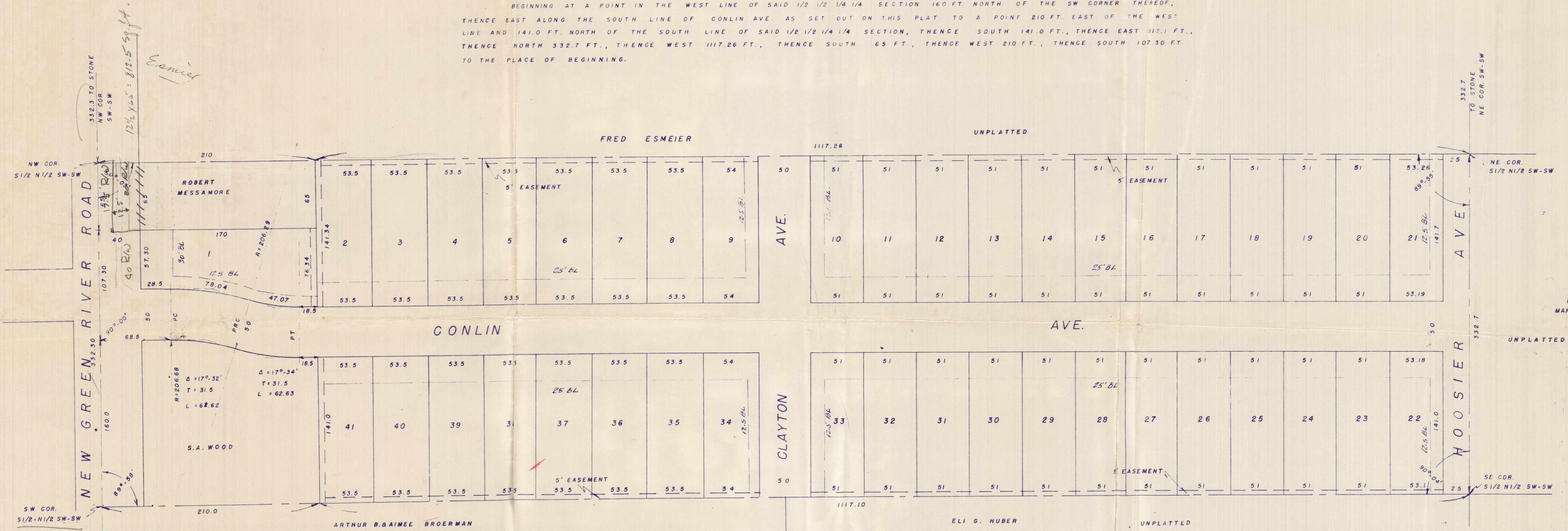


CLAYTON TERRACE

A SUBDIVISION OF A PART OF THE S 1/2 - N 1/2 SW 1/4 - SW 1/4 OF SEC. 36 TWP. 6 SOUTH - RANGE 10 WEST
 BEGINNING AT A POINT IN THE WEST LINE OF SAID 1/2 1/2 1/4 1/4 SECTION 160 FT. NORTH OF THE SW CORNER THEREOF,
 THENCE EAST ALONG THE SOUTH LINE OF CONLIN AVE. AS SET OUT ON THIS PLAT TO A POINT 210 FT. EAST OF THE WEST
 LINE AND 141.0 FT. NORTH OF THE SOUTH LINE OF SAID 1/2 1/2 1/4 1/4 SECTION, THENCE SOUTH 141.0 FT., THENCE EAST 117.1 FT.,
 THENCE NORTH 332.7 FT., THENCE WEST 1117.26 FT., THENCE SOUTH 65 FT., THENCE WEST 210 FT., THENCE SOUTH 107.30 FT.
 TO THE PLACE OF BEGINNING.



THE UNDERSIGNED CIVIL ENGINEER CERTIFIES THIS PLAT TO BE A TRUE AND CORRECT DRAWING OF A SURVEY MADE IN ACCORDANCE WITH THE DESCRIPTION HEREON.

Richard G. Mussmeyer
 RICHARD G. MUSSMEYER
 20 SE SECOND, ST
 EVANSVILLE, INDIANA

STATE OF INDIANA SS
 VANDERBURGH, COUNTY
 BEFORE ME, A NOTARY PUBLIC IN AND FOR SAID COUNTY AND STATE,
 THE UNDERSIGNED OWNERS AND SUBDIVIDORS PERSONALLY APPEARED AND
 ACKNOWLEDGED THE EXECUTION OF THIS PLAT.

Robert H. Messamore
 Robert H. Messamore
Eli G. Huber
 Eli G. Huber
 WITNESS MY HAND AND SEAL THIS 24 DAY OF 1924

NOTARY PUBLIC
 Annabelle B. Powell
 MY COMMISSION EXPIRES

APPROVED BY
 COUNTY PLAN COMMISSION
 OF VANDERBURGH COUNTY, INDIANA
 FILE NO. 116-107
 PAGE NO. 116-8
 116-8
 116-8
 Al Pennington
 Charles J. Wiley

664.60
 548.57
 116.07

Received for Record
 11/11/24
 116-107
 116-8
 116-8