

REAR YARD DRAINAGE SWALES

TYPICAL DETENTION POND SECTION

TYPICAL CONCRETE DITCH

STREET COMPACTION REQUIREMENT

TEST-CONTROLLED COMPACTION. IN CONSTRUCTION OF EMBANKMENTS AND PREPARATION OF SUBGRADES, ALL SOILS SHALL BE COMPACTED TO 95% OF MAXIMUM DENSITY AT OPTIMUM MOISTURE AS DETERMINED BY MOD. A.A.S.H.O. T-180, AND SOILS FOR A DEPTH OF 9" BELOW PAVEMENT SUBGRADES IN BOTH CUTS AND EMBANKMENTS SHALL BE COMPACTED TO NOT LESS THAN 95%.

SOILS WHICH HAVE DENSITY LESS THAN 108 LB. PER. CUBIC FOOT AS DETERMINED BY MOD. A.A.S.H.O. T-180 SHALL BE WASTED OR MIXED WITH HEAVIER SOILS TO OBTAIN THE REQUIRED WEIGHT.

WHEN MATERIAL VARIES FROM OPTIMUM MOISTURE CONTENT, IT SHALL BE TREATED AS FOLLOWS: WHEN WET IT SHALL BE DRAINED OR WORKED UNTIL OPTIMUM MOISTURE CONTENT IS ATTAINED; WHEN DRY IT SHALL BE WATERED.

PRACTICAL CONTROL. IN CONSTRUCTION OF EMBANKMENTS AND PREPARATION OF SUBGRADES THE SOIL SHALL BE COMPACTED WITH APPROVED EQUIPMENT. THE SOIL SHALL BE TREATED AND WORKED AS TO BE DAMP BUT NOT WET.

NON-COMPACTABLE SUBGRADES IN CUT AREAS. IN CUT AREAS WHERE THE CONTRACTOR IS REQUIRED TO ACHIEVE COMPACTION OF 95% AS CALLED FOR ABOVE, THE CONTRACTOR WILL UNDERCUT MATERIAL WHICH IS NOT COMPACTABLE AND REPLACE WITH GRANULAR MATERIAL P.R.A. CLASSIFICATION A1 TO A4 INCLUSIVE. MATERIAL WILL BE DEEMED NOT COMPACTABLE IF THE REQUIRED COMPACTION PERCENTAGE CANNOT BE ATTAINED BY THE USE OF 25 PASSES BY THE SPECIFIED COMPACTION EQUIPMENT. TO ATTAIN SPECIFIED COMPACTION, CONTRACTOR SHALL USE TAMPING ROLLERS, VIBRO-TAMPERS, SMOOTH ROLLERS, OR CONSTRUCTION EQUIPMENT AS CALLED FOR BY THE ENGINEER.

ALL COMPACTION TESTS SHALL BE IN ACCORDANCE WITH A.S.T.M. D2122. NOTE COMPACTION TEST RESULTS REQUIRED BEFORE STREET ACCEPTANCE.

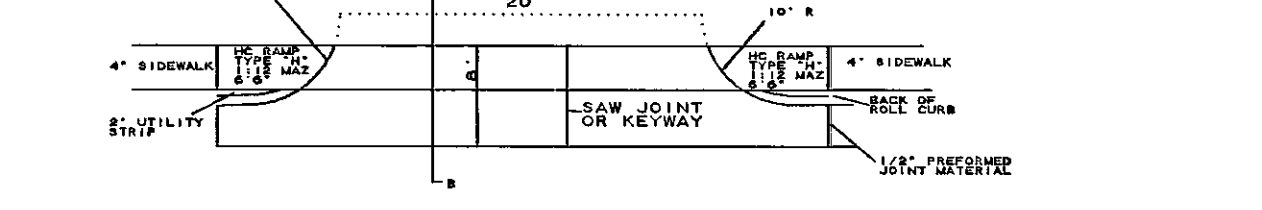
GENERAL STORM SEWER NOTES

- 1.) STORM SEWER PIPE MAY BE PLASTIC OR CONCRETE AS APPROVED BY OWNER. PLASTIC PIPE SHALL BE ADS-N-13 OR EQUAL. ALL PIPE MUST COVER IN AREAS WHERE COVER DOES NOT FALL WITHIN THE MANUFACTURERS RECOMMENDATIONS. CONCRETE PIPE MUST BE USED.
- 2.) OTHER PIPE CORRUGATED STEEL PIPE MAY NOT BE UTILIZED.
- 3.) END TREATMENT HEADWALLS SHALL BE INSTALLED AT ALL INLETS & OUTLETS ON PIPES 15" THROUGH 48". LARGER PIPES MAY UTILIZE PIPE ANCHORS.
- 4.) ALL CURB INLETS & AREA DRAINS SHALL BE PRECAST BOXES CONSTRUCTED AS SHOWN HEREON.
- 5.) ALL MANHOES SHALL BE CONSTRUCTED AS SHOWN HEREON.

SPECIFICATIONS MULCH SEEDING REQUIREMENTS DRAINAGEWAYS AND RIGHT-OF-WAYS

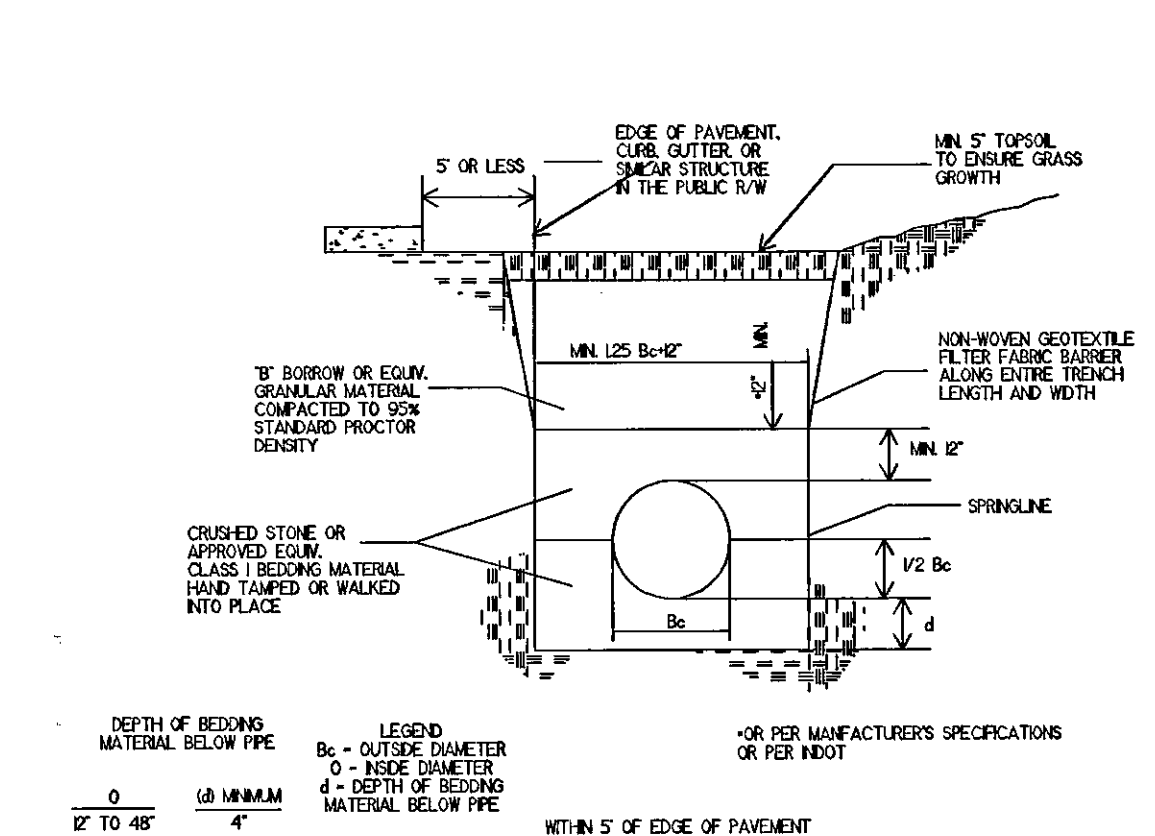
THE AREA TO BE SEEDDED SHALL BE MADE SMOOTH AND UNIFORM AND THE SEED BED SHALL BE LOOSENEED TO A MINIMUM DEPTH OF 3 INCHES ON A PREPARED BED. AGRICULTURE LIMESTONE AND FERTILIZER SHALL BE APPLIED AT A RATE OF FOUR (4) POUNDS AND TWO (2) POUNDS RESPECTIVELY AND MIXED IN THE SEED BED. THIS SHALL BE FOLLOWED BY APPLICATION OF SEED MIXTURE AT THE RATE OF 174 POUNDS PER SQUARE YARD WITH 82% OF THE MIXTURE BEING KENTUCKY 31 FESCUE, .09% KENTUCKY BLUE GRASS, AND 14% ANNUAL TIE GRASS.

NOTE: CURBING PLACED AND PAID FOR TO BEGINNING OF RADIUS ONLY AND CONTINUED BEYOND END PT. PLACED AS OPPOSITE RADIUS. DRIVE PLACED AS CONTINUOUS FOUR TO FRONT LIP OF GUTTER WITH A FRONT LIP OF GUTTER AS SHOWN BELOW.

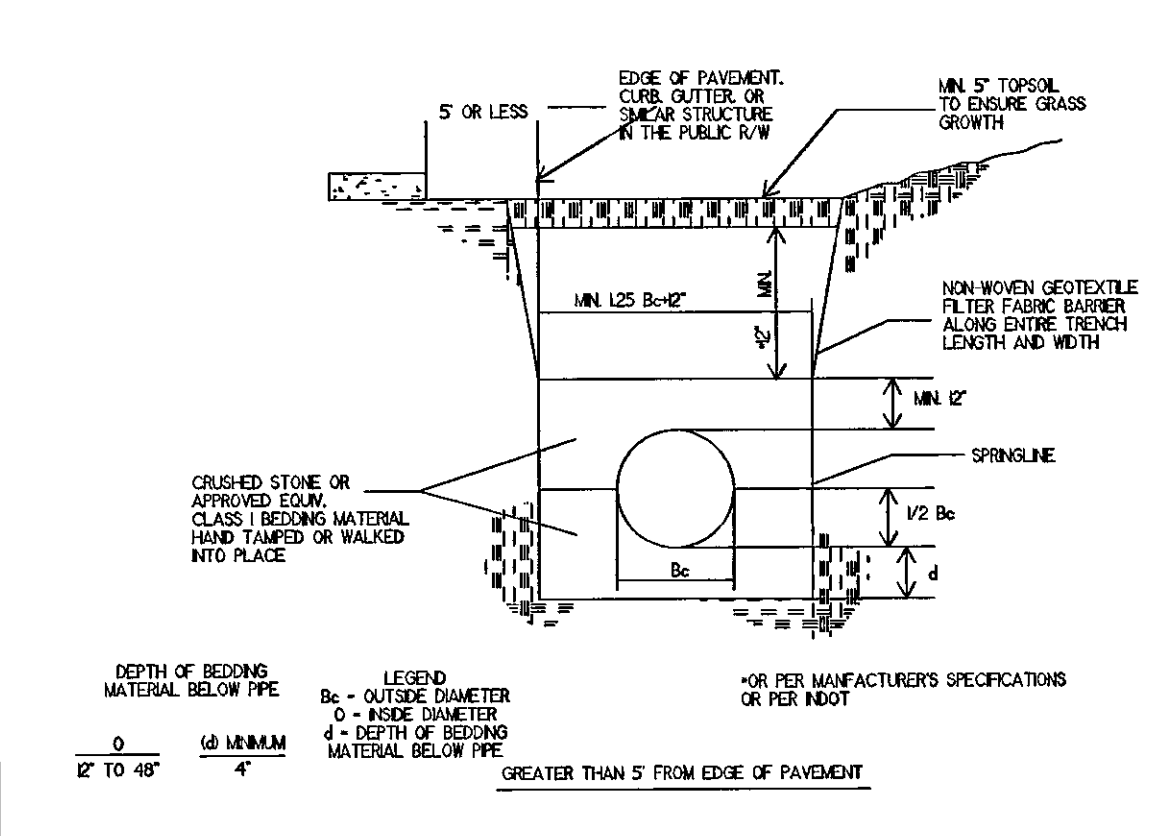


NOTE: DRIVE THICKNESS .75" FOR CLASS III (RESIDENTIAL DRIVES) .8" FOR CLASS III (COMMERCIAL DRIVES)

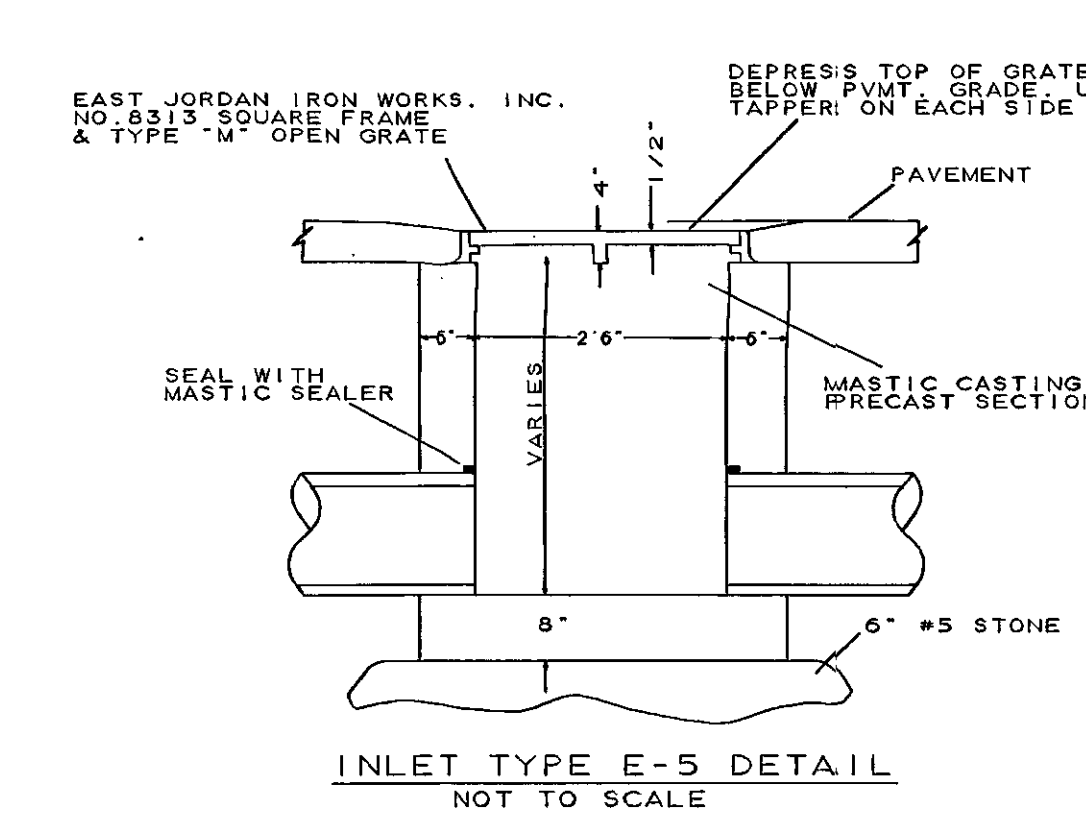
CLASS III DRIVE APPROACH DETAIL



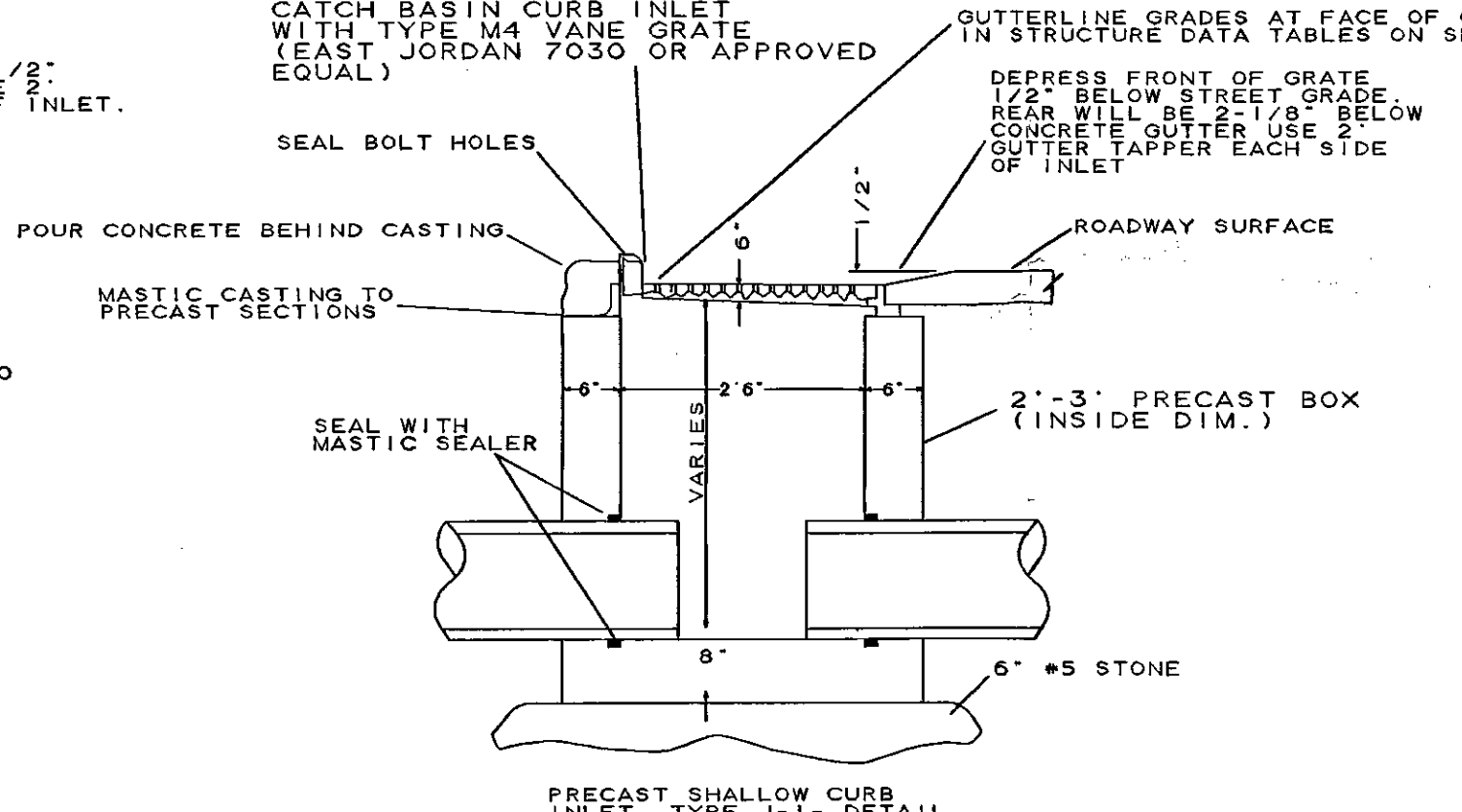
PLASTIC PIPE (PVC & HDPE) STORM SEWER BEDDING DETAIL NOT TO SCALE



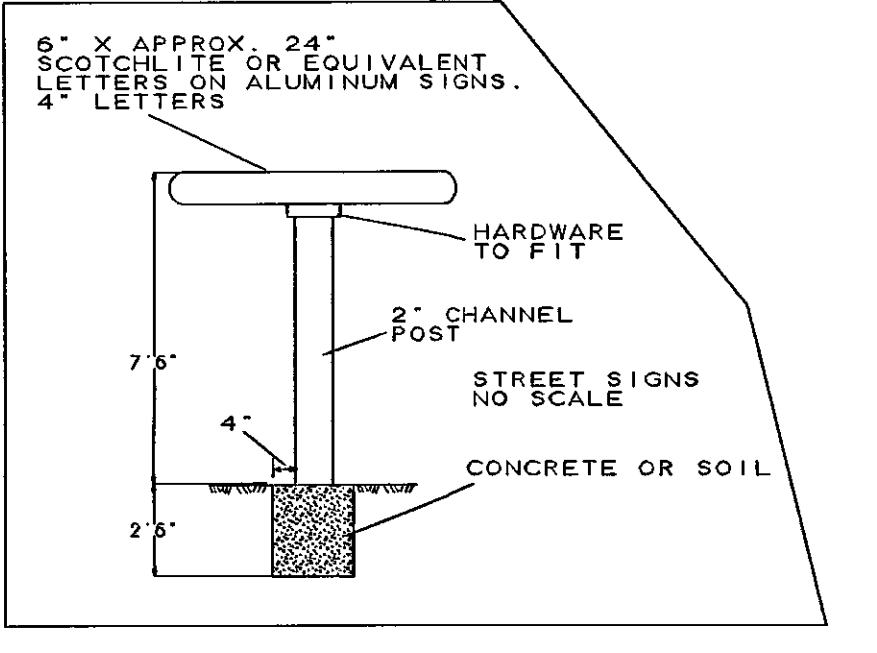
PLASTIC PIPE (PVC & HDPE) STORM SEWER BEDDING DETAIL NOT TO SCALE



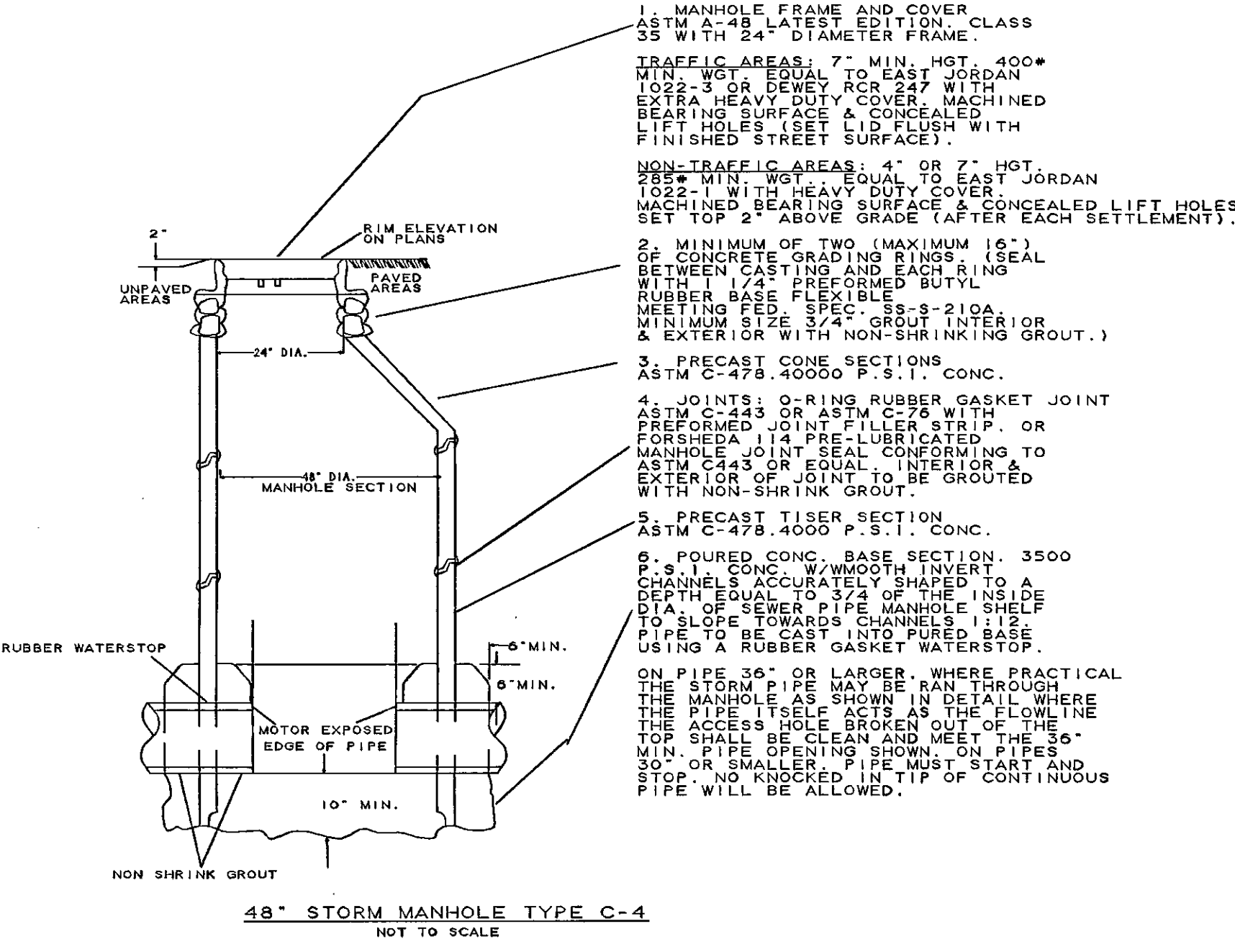
INLET TYPE E-5 DETAIL NOT TO SCALE



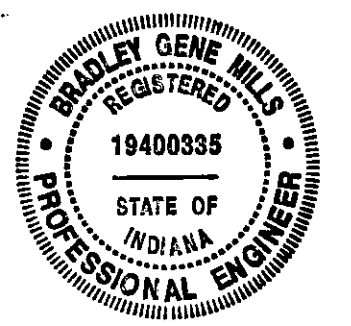
PRECAST SHALLOW CURB INLET TYPE J-1-1 DETAIL NOT TO SCALE



STREET SIGN DETAIL



48" STORM MANHOLE TYPE C-4 NOT TO SCALE



Bradley B. Mill

CAPSTONE
ENGINEERING & ENVIRONMENTAL, INC.

104 STATE STREET
NEWBURGH, IN 47630
PH: (812) 853-2739
FAX: (812) 853-2542

BURKHARDT CENTER PHASE II
STREET DETAILS

PROJECT # 09-7-2	DRAWN BY: BGM
FILE NAME: STREET	DESIGNED BY: BGM
REVISIONS	CHECKED BY: BGM
BY DATE ITEM	DATE 10-18-01
BGM 12-14-01 CO. COMMENTS	SCALE: 1"=50'
	SHEET NUMBER 2 OF 2