

BELLEAIRE,

A Subdivision of Lots 2-3-4 & 5
 Nighthale's Subdivision of a part of the South East Quarter
 of the North East Quarter of Section 21 T. 6, South Range 10 W.
 as laid out by the proprietor thereof, said lands being in
 Vanderburgh County, State of Indiana.

John R. Mitchell

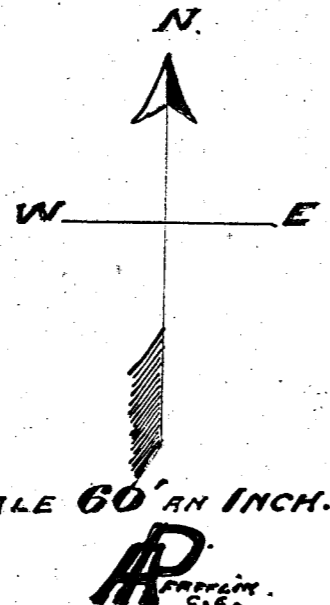
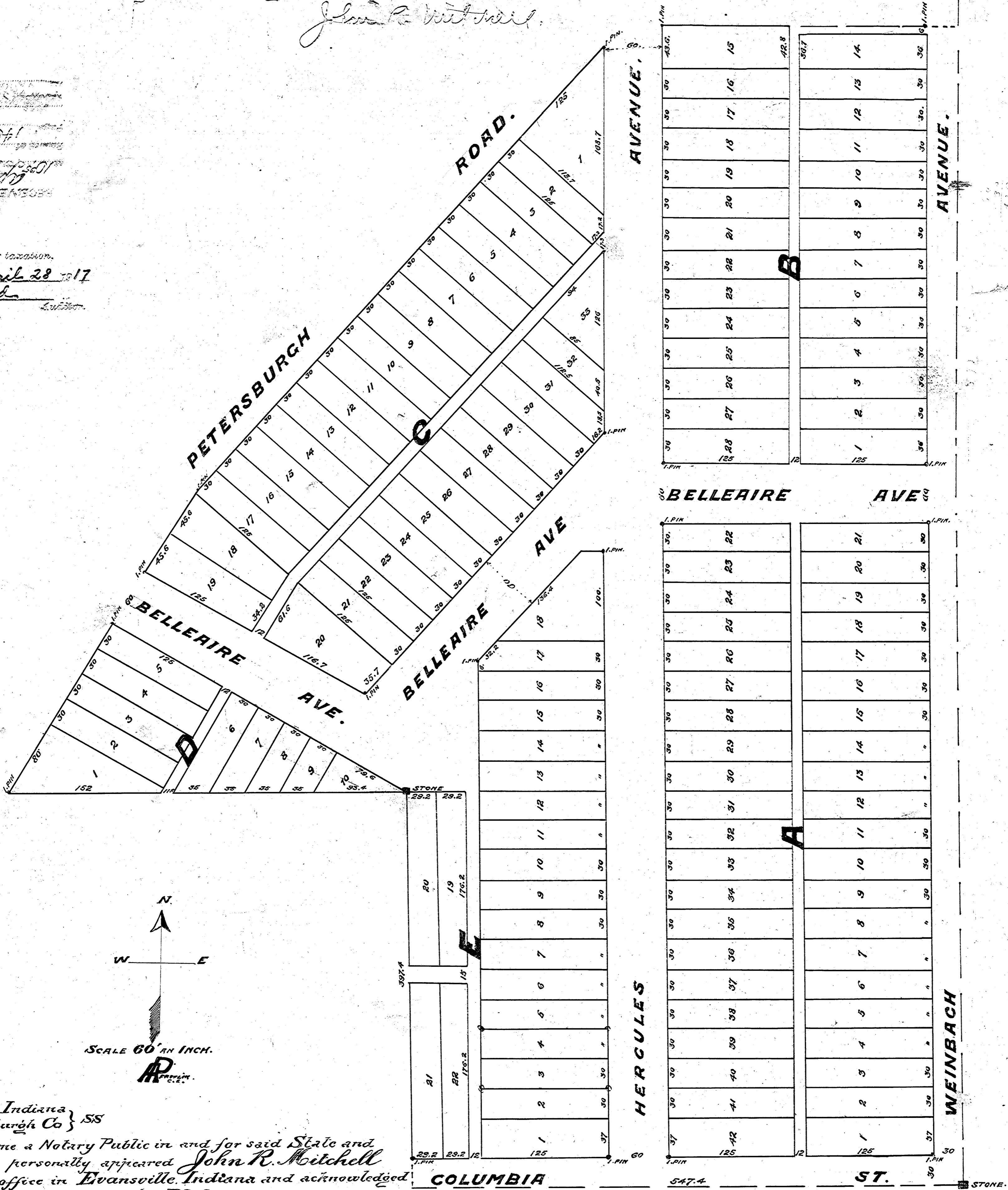
Liberty
 GEORGE HOF GENEALOGY

July entered for taxation.

April 28 1917

Carters

1335



State of Indiana }
 Vanderburgh Co } 55

Before me a Notary Public in and for said State and
 County personally appeared *John R. Mitchell*
 at my office in *Evansville, Indiana* and acknowledged
 the execution of the above Plat.

Witnessed my hand and official seal this 22nd day of November 1916

My COMMISSION EXPIRES August 20th 1920.

De Witt Chappell Jr
 Notary Public.

Approved by Board
 of Public Works
 November 25-1916

H. Hamilton
 Board of Public Works
John W. Bonits
Attest