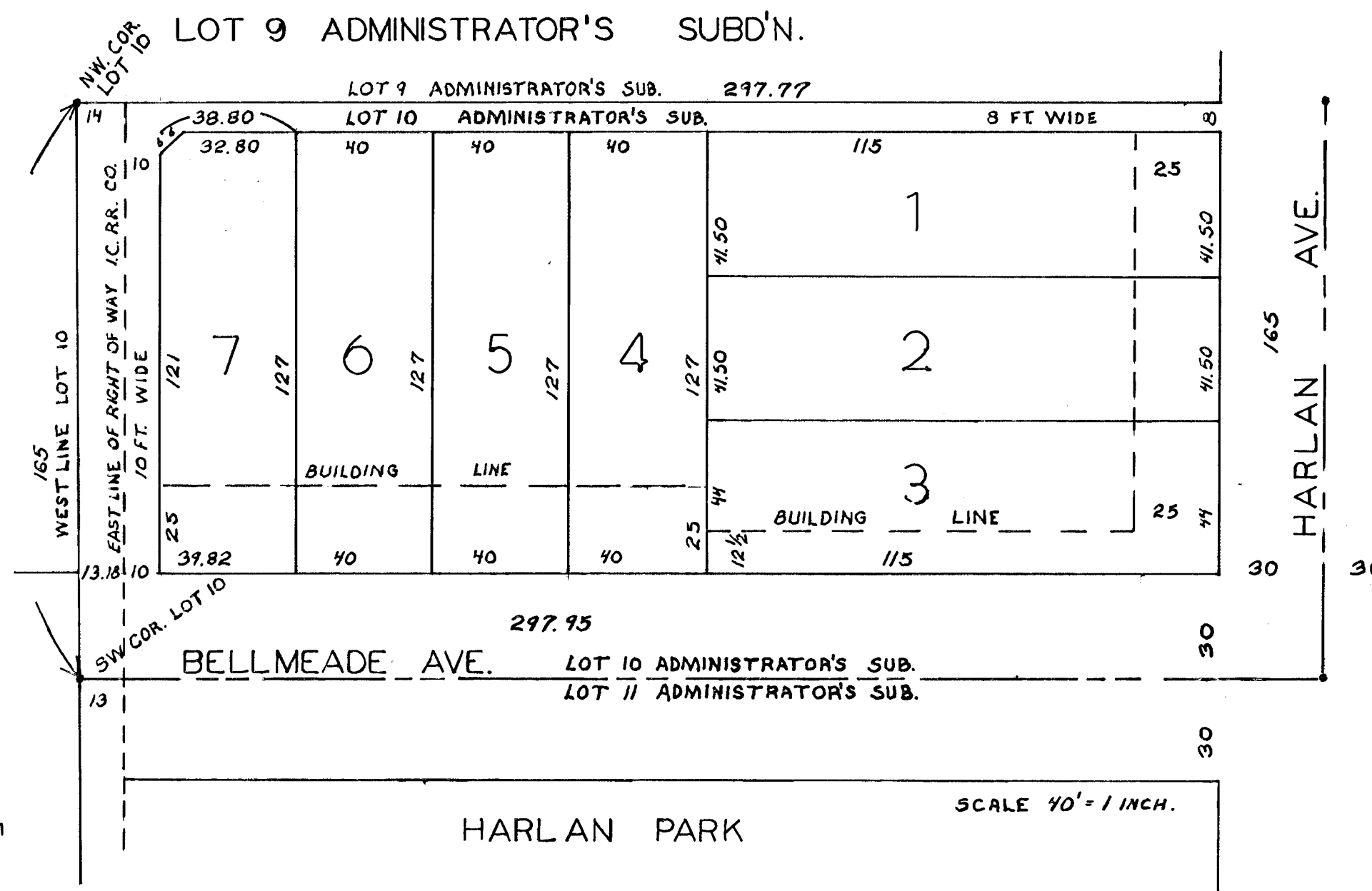
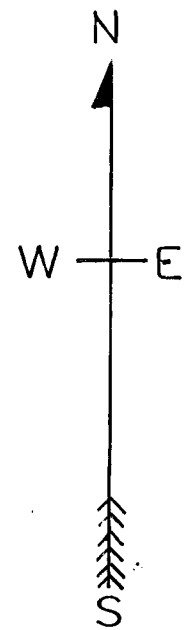


PLAT OF SUBDIVISION OF PART OF LOT 10 OF ADMINISTRATOR'S SUBDIVISION OF BLOCKS 2-7 SOUTH HALF 9-10-11-14-15 AND WEST HALF 16 SHANKLIN'S SUBDIVISION OF THE SOUTHWEST QUARTER OF SECTION 28 TOWNSHIP 6 SOUTH RANGE 10 WEST.

AS LAID OUT BY THE SCHOOL CITY OF EVANSVILLE PROPRIETOR THEREOF  
 NUMBER OF LOTS AND SIZES THEREOF  
 WIDTHS OF STREETS AND ALLEYS ARE AS SHOWN ON PLAT BELOW  
 ALL LOTS IN THIS SUBDIVISION ARE CLASSIFIED UNDER THE ZONE ORDINANCE IN THE  
 "A" RESIDENCE USE DISTRICT  
 "A" HEIGHT AND AREA DISTRICT

By M. S. SPEARS  
 BUSINESS MANAGER  
 BOARD OF EDUCATION  
 SCHOOL CITY OF EVANSVILLE,  
 INDIANA.



COPIED FROM ORIGINAL VELLUM  
 IN SURVEYOR'S OFFICE ON  
 JULY 13, 1971 BY  
 MICHAEL F. RUNAU.

RECEIVED FOR RECORD  
 AT 9:25 AM  
 OCT. 5 1927  
 RECORDED IN PLAT RECORD NO. 11  
 PAGE 25

APPROVED  
 SEPT. 21, 1927  
 BOARD OF PUBLIC WORKS  
 EVANSVILLE, IND.

APPROVED  
 CITY PLAN COMMISSION  
 AUG 3, 1927

STATE OF INDIANA } S.S.  
 VANDERBURGH COUNTY }

BEFORE THE UNDERSIGNED A NOTARY PUBLIC IN AND FOR SAID COUNTY AND STATE PERSONALLY APPEARED THE WITHIN NAMED SCHOOL CITY OF EVANSVILLE BY MAX S. SPEARS BUSINESS MANAGER BOARD OF EDUCATION AND ACKNOWLEDGED THE EXECUTION OF THIS PLAT. WITNESS MY HAND AND NOTARIAL SEAL THIS 15<sup>TH</sup> DAY OF SEPTEMBER 1927.

My commission expires Nov. 3, 1928.  
 ADOLPH F. DECKER NOTARY PUBLIC (SEAL)