

NOTE: No gravity sewers shall be installed until the inlet pipes to the two storage tanks being replaced by STR's 305 & 306 are field verified to confirm that the profiles shown hereon do not need to be adjusted. All elevations shall be verified and findings reported to the owner prior to proceeding with the work.

CONTINUED ABOVE SEE RUN 305-306 PROFILE 3

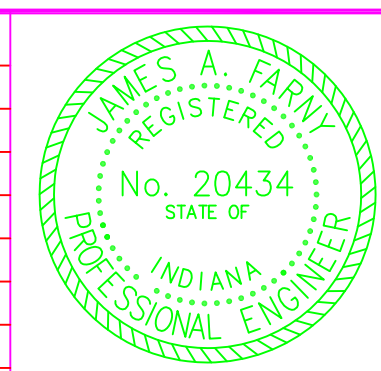
CONTINUED ABOVE SEE RUN 300-301 PROFILE 1

CONTINUED ABOVE SEE RUN 305-306 PROFILE 2

CONTINUED BELOW SEE PROFILE 4

CONTINUED BELOW PROFILE 2

No.	DESCRIPTION	DATE



SEWER PROFILES
 CONTRACT "A" (AND "A" ALT.)
 FOR
MOUTOUX PARK
 VANDERBURGH COUNTY, INDIANA

Prepared By
BERNARDIN LOCHMUELLER & ASSOC., INC.
 Planners - Engineers - Surveyors

DATE: 5/22/95
 PROJECT NO.: 194-0062-OPD
 ISSUED:

7