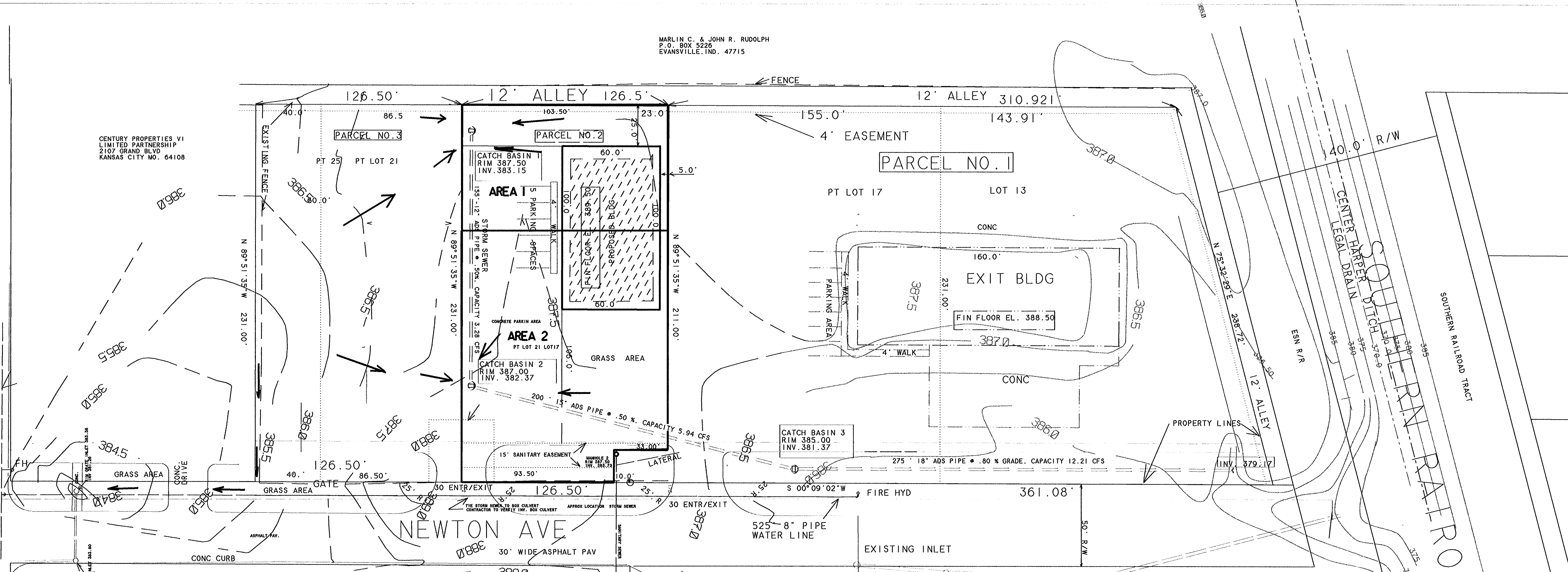


MARLIN C. & JOHN R. RUDOLPH
P.O. BOX 5226
EVANSVILLE, IND. 47715

VOGEL ROAD



CENTURY PROPERTIES VI
LIMITED PARTNERSHIP
2107 GRAND BLVD
KANSAS CITY MO. 64108

Drainage Calculations for Parcel # 2

From Hetric Storm Drainage Manual
Pervious area for area 1, grass - .079 acres
Kerbys n = .4. Runoff coefficient C = .15

Impervious area for area 1, concrete, asphalt & rooftops - .139 acres
Kerbys, n = .02. Runoff coefficient C = .95

Total acreage for area 1 = .218 acres, weighted n = .16, weighted C = .66
Using Kirbys Formula, where L = 125, S = .028 ft/ft, & n = .35, Tc = 8.54 minutes
Use 10 minutes Tc, i = 6"/hr, Rational Formula, C66 x i 6"/hr x A .218 = .86 cfs
In anticipation of future development of Parcel 3 multiply .86 cfs by two = 1.72 cfs
going to storm drain inlet # 1.

Use 15' of 12" ADS Pipe @ .50 % grade, flow capacity 3.28 cfs, velocity 4.84 cfs

Pervious area for area 2, grass - .179 acres
Kerbys n = .4. Runoff coefficient C = .15

Impervious area for area 2, concrete, asphalt & rooftops - .267 acres
Kerbys, n = .02. Runoff coefficient C = .95

Total acreage for area 2 = .446 acres, weighted n = .17, weighted C = .63
Using Kirbys Formula, where L = 155, S = .026 ft/ft, & n = .17, Tc = 9.88 minutes
Use 10 minutes Tc, i = 6"/hr, Rational Formula, C63 x i 6"/hr x A .446 = 1.69 cfs
In anticipation of future development of Parcel 3 multiply 1.69 cfs by two = 3.38 cfs
going to storm drain inlet # 2 + 1.72 cfs coming from inlet # 1 = 5.3 cfs required.

Use 200' of 15" ADS Pipe @ .50 % grade, flow capacity 5.94 cfs, velocity 4.17 cfs

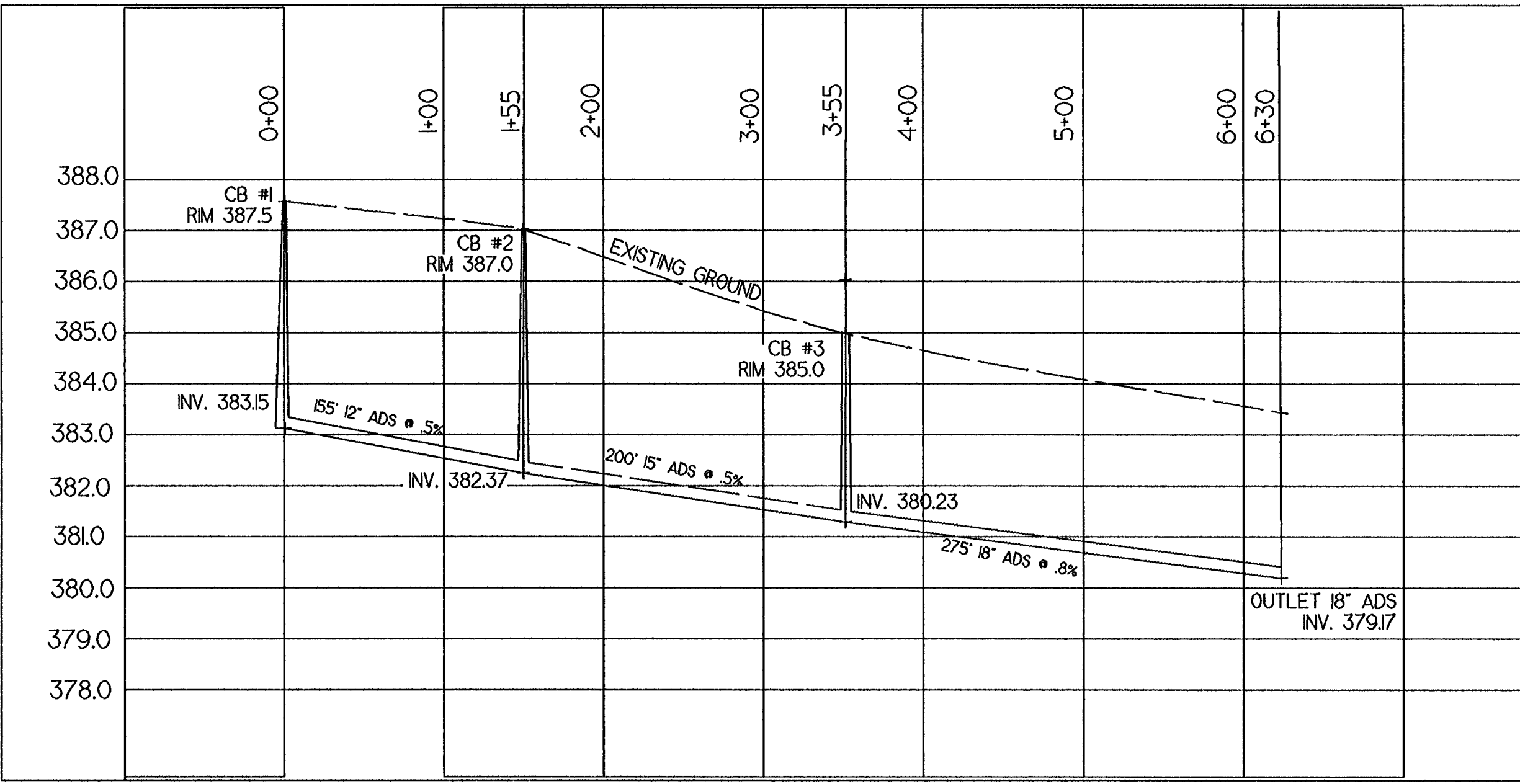
NOTE: At catch basin #3, approx. 1.72 acres is picked up from part of Parcel No. 1
adding 6.5 cfs to 5.3 cfs from areas 1 & 2, raising the total required cfs to 11.8.

Use 275' of 18" ADS Pipe @ .80 % grade, flow capacity 12.21 cfs, velocity 6.91 cfs

Legal Description
Pt Lot 17 and Lot Pt Lot 21 Hubert J. Schmidt

A part of LOT 17 AND LOT 21 OF Hubert J. Schmidt Subdivision as
Recorded in Book H Page 299-300 in the office of Recorder of
Vanderburgh County, Indiana and being a part of the Northeast Quarter
of Section Thirty-Three (33), Township Six (6) South, Range Ten (10)
West, in Knight Civil Township, Vanderburgh County, Indiana and being
more particularly described as follows:

Commencing at the Northeast Corner Lot 21 Hubert J. Schmidt; thence
South 0 degrees 09 minutes 02 seconds West, a distance of 10.00 feet
to the POINT OF BEGINNING; thence continuing South along said line, a
distance of 93.50 feet; thence North 89 degrees 51 minutes 35 seconds
West, a distance of 231.00 feet; thence North 0 degrees 09 minutes 02
seconds East, a distance of 126.50 feet; thence South 89 degrees 51
minutes 35 seconds East, a distance of 211.00 feet; thence South 0
degrees 09 minutes 02 seconds West, a distance of 33.00 feet; thence
South 89 degrees 51 minutes 35 seconds East, a distance of 20.00 feet
to the POINT OF BEGINNING; said described tract containing 0.6557
acre, more or less.

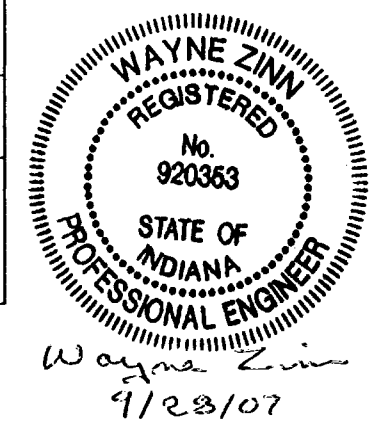


SCALE 1"=30'

- LEGEND**
- - - - - EXISTING CONTOURS
 - — — — — PAVEMENT
 - — — — — PROPERTY LINE
 - — — — — CENTER LINE ROAD
 - - - - - EASEMENT
 - SS — — — — SANITARY SEWER
 - — — — — STORM SEWER
 - W — — — — WATER LINE
 - E — — — — ELECTRIC LINE
 - S.S. = SANITARY SEWER
 - P.U. = PUBLIC UTILITY
 - D = DRAINAGE
 - P.O.B. = POINT OF BEGINNING
 - = ADDRESS

OWNER OF RECORD
HOLWEGER DEVELOPMENT & CONSTRUCTION
955 HEBRON AVE.
EVANSVILLE, IND 47715

1308B Newton
Revised Drawings
JCC 1/4/07



UTILITIES CONSULTING CO. INC.
109 STATE STREET
NEWBURGH, IN 47630
PH: (812) 853-2739
FAX: (812) 853-2542

HOLWEGER DEVELOPMENT SITE PLAN
HUBERT J. SCHMIDT UB
LOT 13, LOT 17, LOT 21, LOT 25
HUBERT J. SCHMIDT SUB BOOK H P299-300
CITY OF EVANSVILLE, INDIANA

PROJECT #	DRAWN BY
FILE NAME: NEWTONS	DESIGNED BY
REVISIONS 8/25/07	CHECKED BY
BY DATE ITEM	DATE
	SCALE
	SHEET NUMBER
	1 OF 6