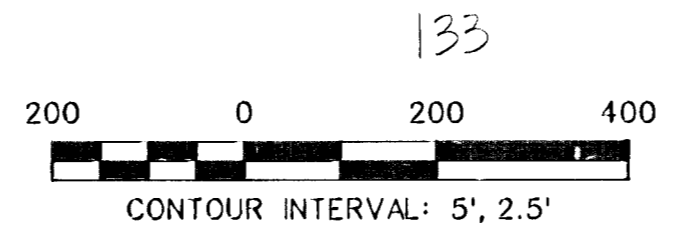
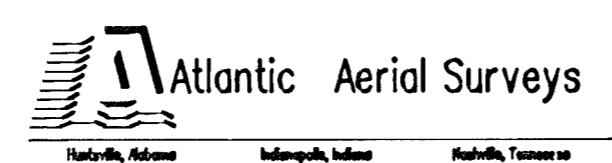




DIGITAL MAPPING WAS PREPARED BY ATLANTIC AERIAL SURVEYS IN COOPERATION WITH MORLEY AND ASSOCIATES OF EVANSVILLE, INDIANA. THIS MAP WAS GENERATED BY PHOTOGAMMETRIC METHODS UTILIZING AERIAL PHOTOGRAPHY DATED 3-27-90, AND COMPLIES WITH NATIONAL MAP ACCURACY STANDARDS. INDIANA STATE PLANE COORDINATE SYSTEM, WEST ZONE AND NORTH AMERICAN DATUM 1983 WAS THE BASIS FOR THE GPS MAPPING CONTROL NETWORK.



OHIO RIVER
BACKWATER 378.0

THIS MAP IS THE PROPERTY OF THE CITY OF EVANSVILLE, INDIANA AND VANDERBURGH COUNTY, INDIANA. THIS MAP CAN NOT BE REPRODUCED UNLESS PERMISSION IS GRANTED BY THE AREA PLAN COMMISSION OR THE VANDERBURGH COUNTY SURVEYOR'S OFFICE.

SEC. 24 - T6S - R11W

TOPOGRAPHIC MAP

SHEET 132 OF 317