

COUNTY OF
VANDERBURGH, IN

OLD SURVEYS
1806
PLAT BOOK

START

State of Indiana

Office of Auditor of State

I, A. C. Daily, Auditor of State of the State of Indiana, do hereby certify that the foregoing from pages 1 to 11, inclusive, are full true and complete Copies of the official Plats of the United States Survey of the Congressional Townships and parts of Townships, that comprise the present limits of Vanderburgh County, Indiana, as the same appear from the original of said plats now on file in my office and of which I am the legal Custodian.

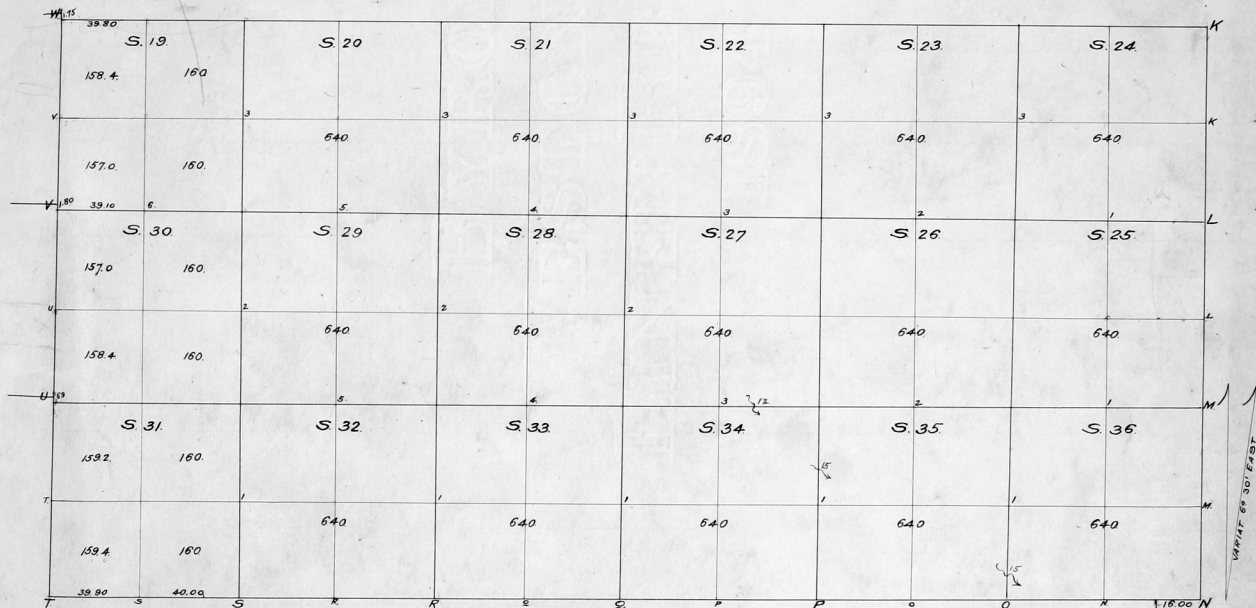
Witness my hand and official seal, at the
City of Indianapolis, this 29th day of May 1896.

Americus C. Daily
Auditor of State



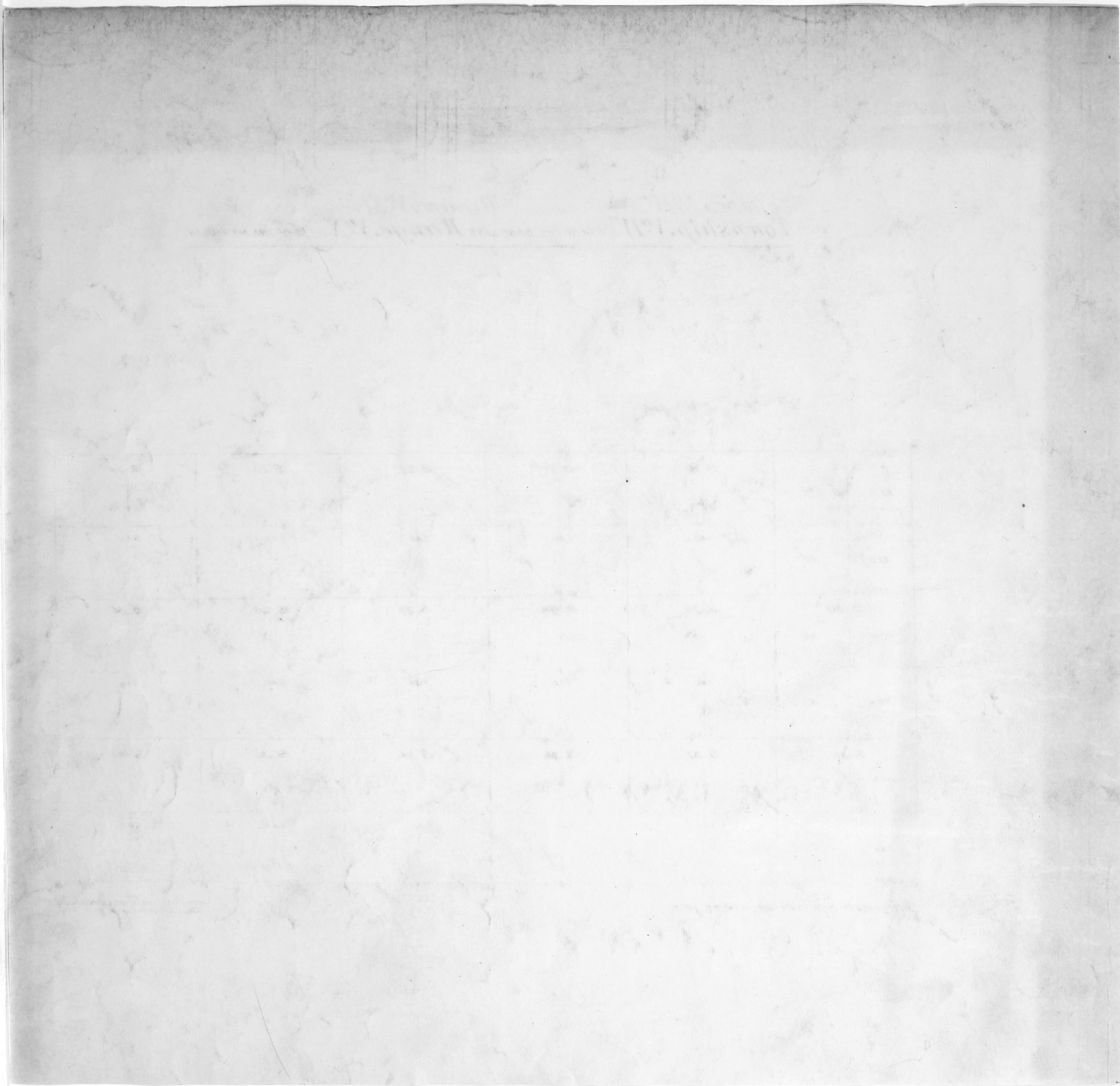


Township N^o IV SOUTH OF THE BASE LINE Range N^o X WEST OF THE MERIDIAN.



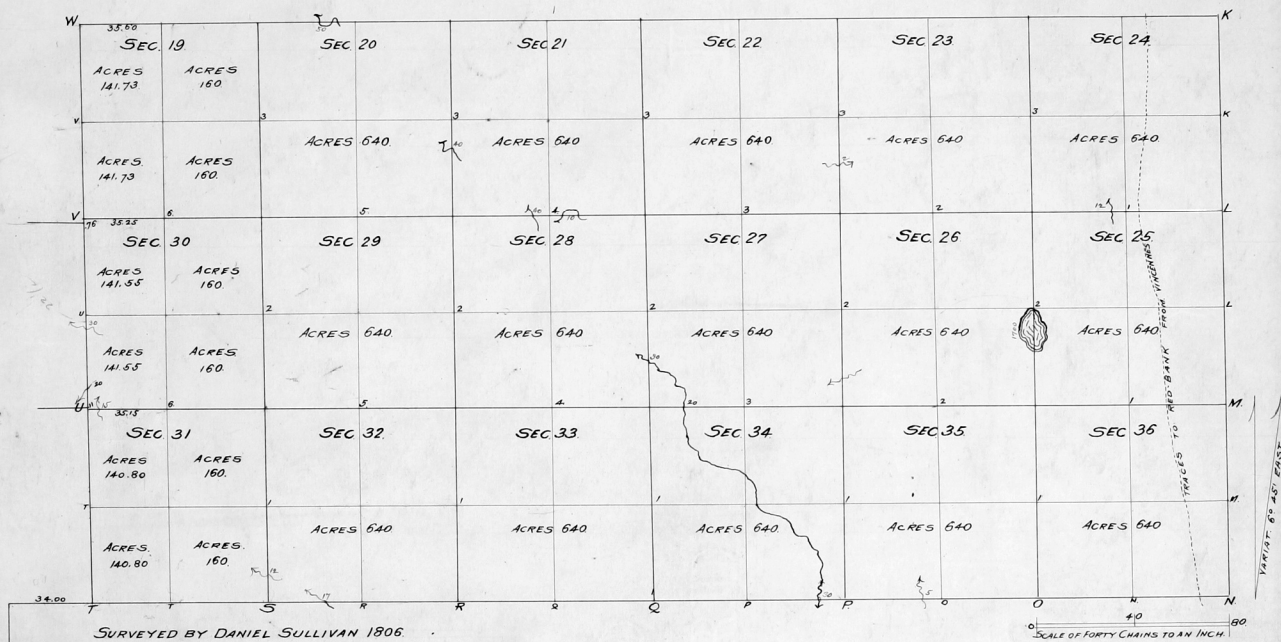
SURVEYED BY JOHN BROATHITT 1806.

SCALE OF FORTY CHAINS TO AN INCH



2

Township N^o IV SOUTH OF THE BASE LINE Range N^o XI WEST OF THE MERIDIAN.



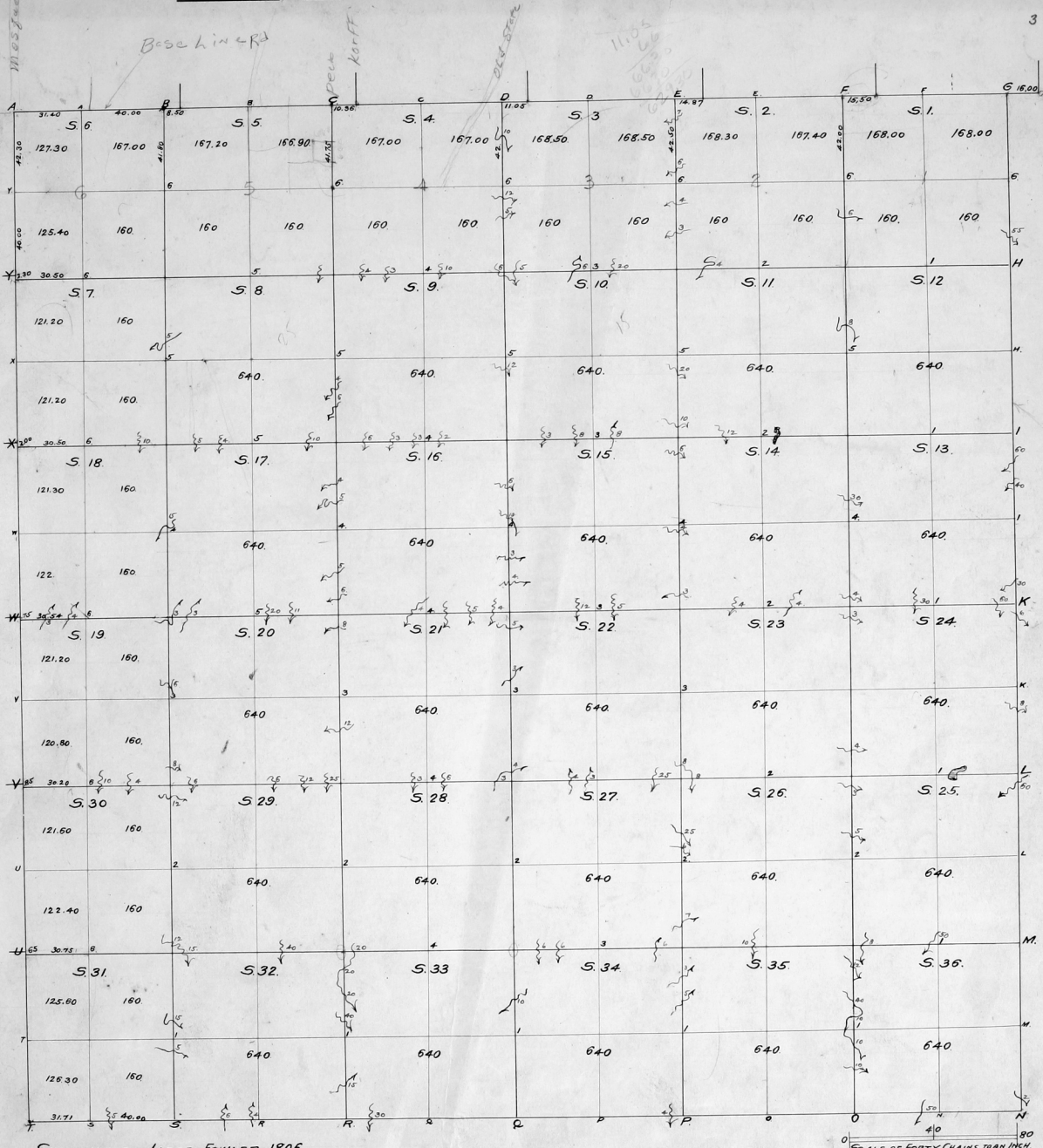
Inventory of the [illegible] [illegible]

[illegible]	[illegible]	[illegible]	[illegible]	[illegible]	[illegible]	[illegible]	[illegible]
[illegible]	[illegible]	[illegible]	[illegible]	[illegible]	[illegible]	[illegible]	[illegible]
[illegible]	[illegible]	[illegible]	[illegible]	[illegible]	[illegible]	[illegible]	[illegible]
[illegible]	[illegible]	[illegible]	[illegible]	[illegible]	[illegible]	[illegible]	[illegible]
[illegible]	[illegible]	[illegible]	[illegible]	[illegible]	[illegible]	[illegible]	[illegible]
[illegible]	[illegible]	[illegible]	[illegible]	[illegible]	[illegible]	[illegible]	[illegible]
[illegible]	[illegible]	[illegible]	[illegible]	[illegible]	[illegible]	[illegible]	[illegible]
[illegible]	[illegible]	[illegible]	[illegible]	[illegible]	[illegible]	[illegible]	[illegible]
[illegible]	[illegible]	[illegible]	[illegible]	[illegible]	[illegible]	[illegible]	[illegible]
[illegible]	[illegible]	[illegible]	[illegible]	[illegible]	[illegible]	[illegible]	[illegible]

[illegible]

Township *N°V* SOUTH OF THE BASE LINE *Range N°X* WEST OF THE MERIDIAN.

3



VARIATION 60° 30' EAST

SURVEYED BY JACOB FOWLER 1806.

SCALE OF FORTY CHAINS TO AN INCH.

THE UNIVERSITY OF CHICAGO

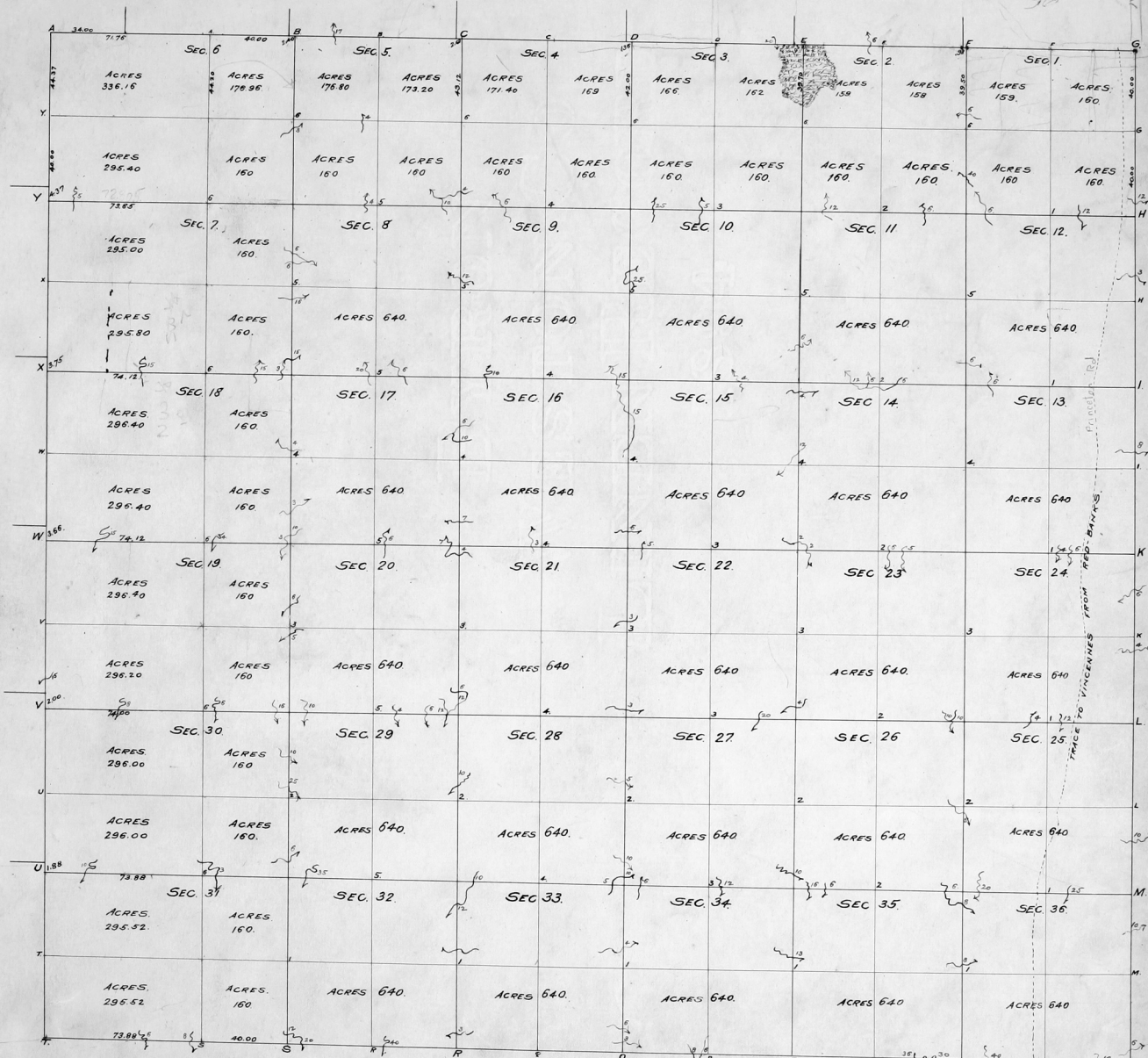
Faint, illegible text, possibly bleed-through from the reverse side of the page.

Township N^o V SOUTH OF THE BASE LINE Range N^o XI WEST OF THE MERIDIAN

4

Base Line R₁

Base Line R₃



SURVEYED BY JACOB FOWLER 1805

SCALE OF FORTY CHAINS TO AN INCH

3670
2
7340

36

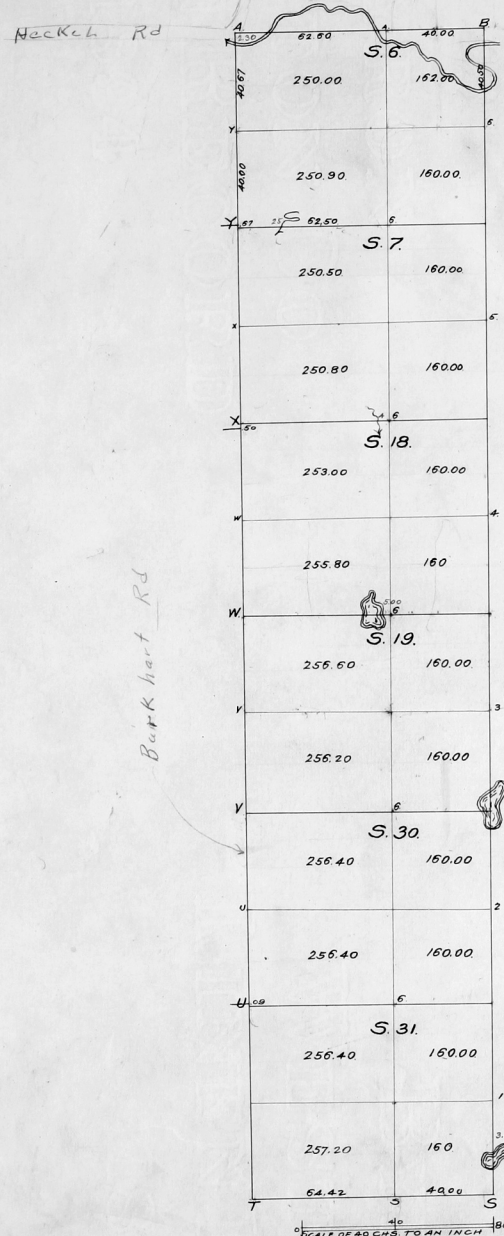
TRAP 60 45 EAST

Handwritten text at the top of the page, possibly a title or header, which is mostly illegible due to fading and bleed-through.

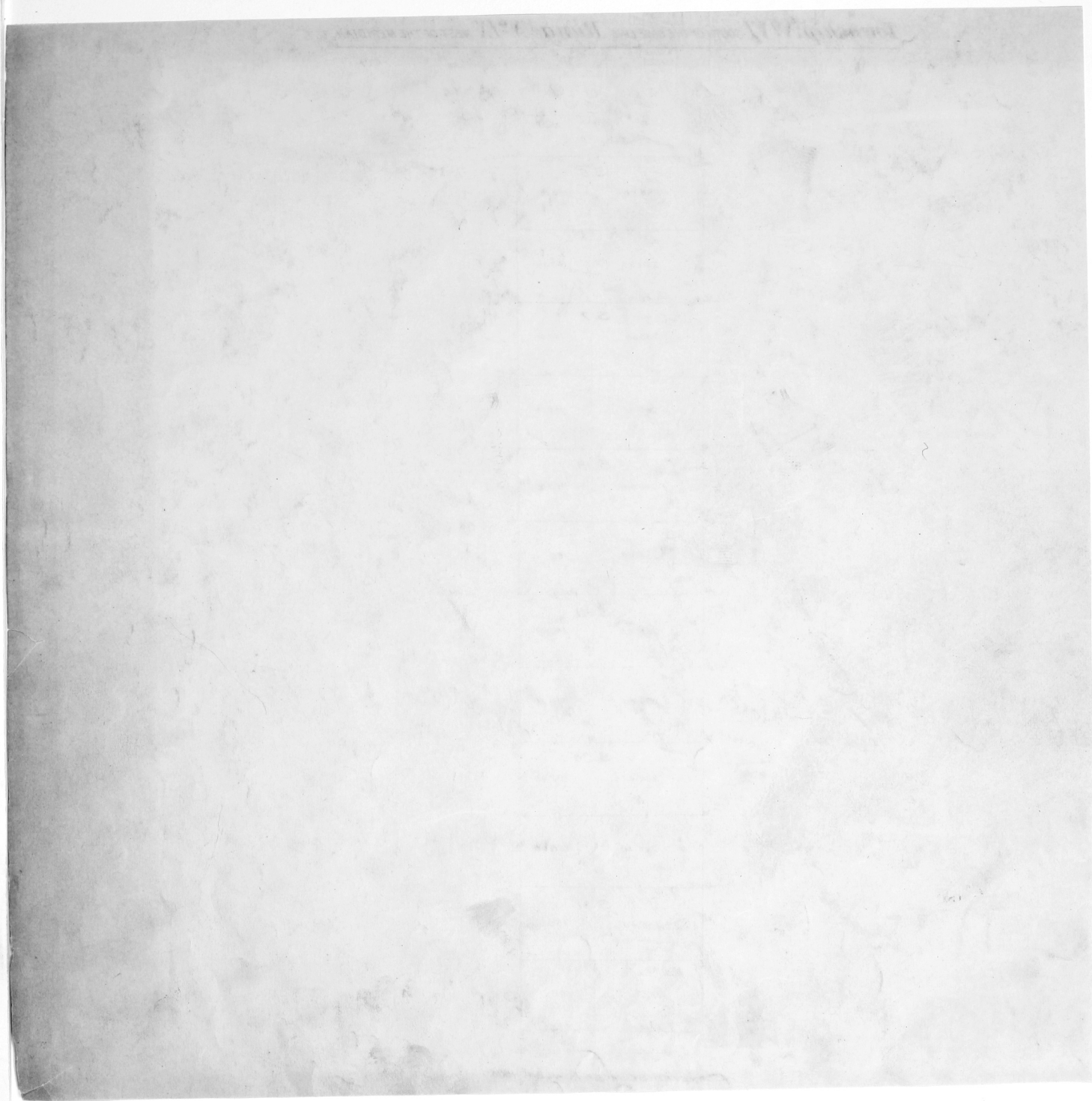
Main body of handwritten text, consisting of several lines of cursive script. The text is extremely faint and difficult to decipher, appearing as light grey lines against the background.

Handwritten text at the bottom of the page, possibly a signature or date, which is also illegible.

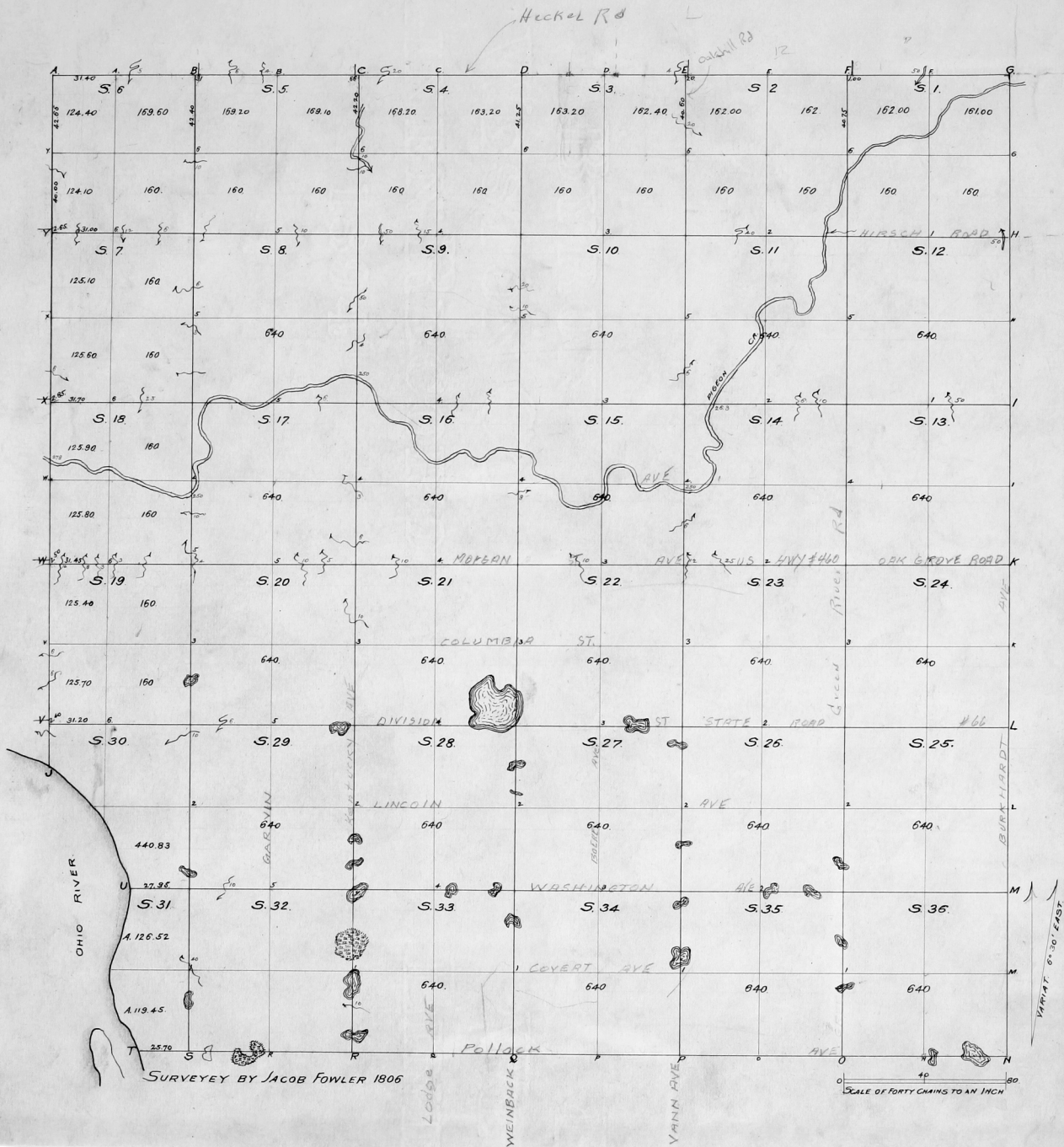
467
66
402
452
4722



70
4
250

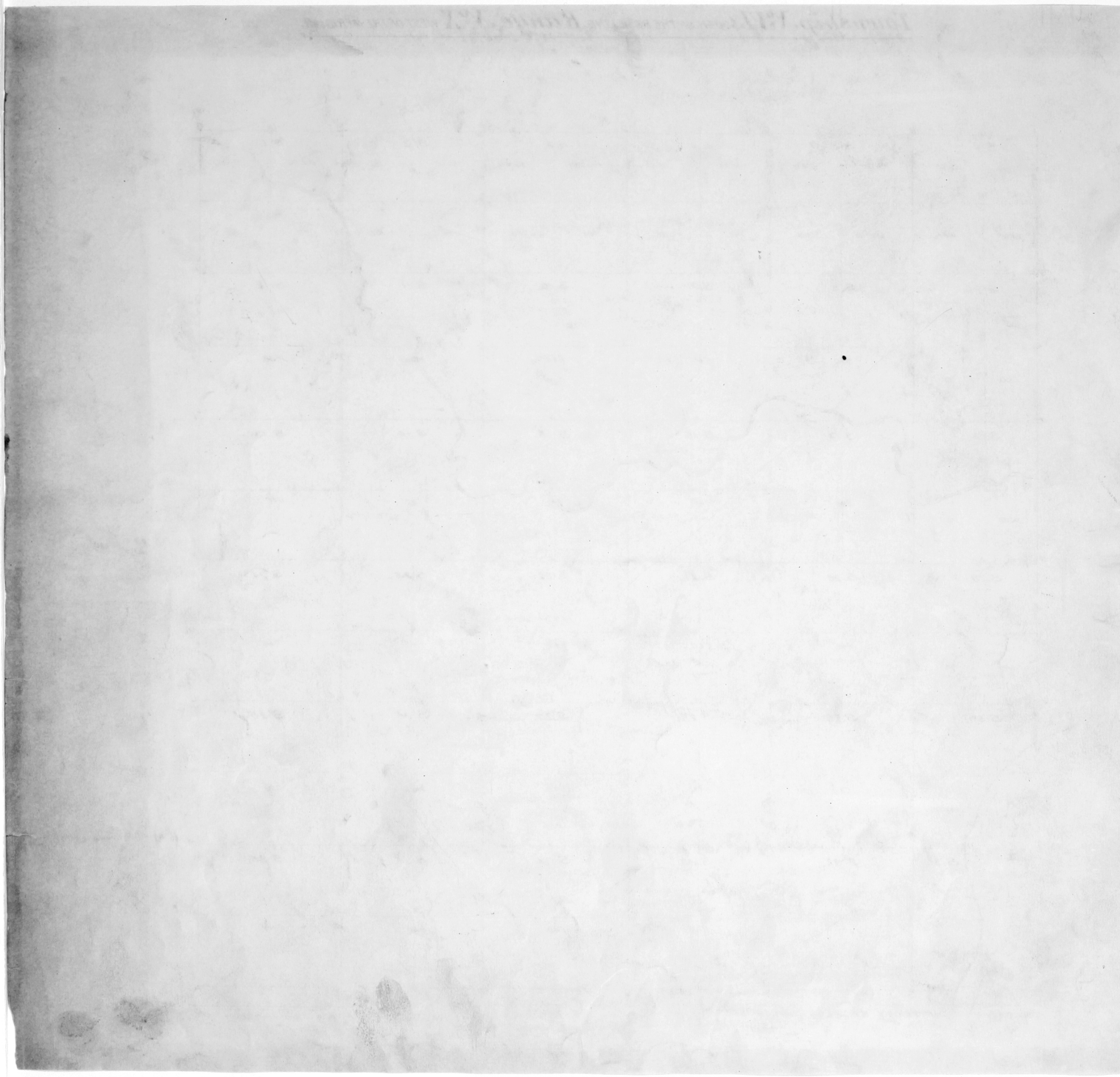


Township N° VI SOUTH OF THE BASE LINE Range N° X WEST OF THE MERIDIAN. 6

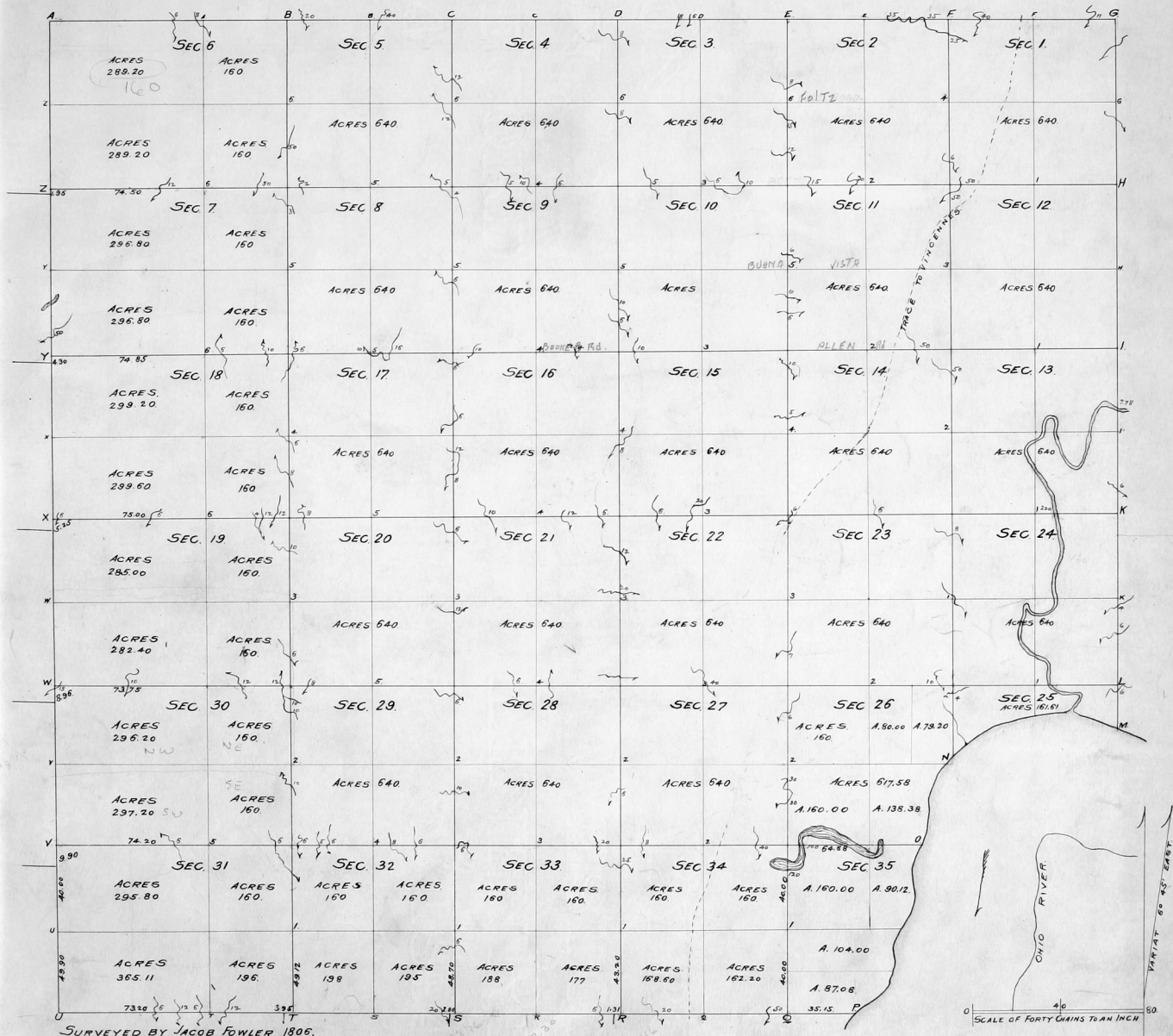


Four days, 17th, 18th, 19th, 20th, 21st, 22nd, 23rd, 24th, 25th, 26th, 27th, 28th, 29th, 30th, 31st

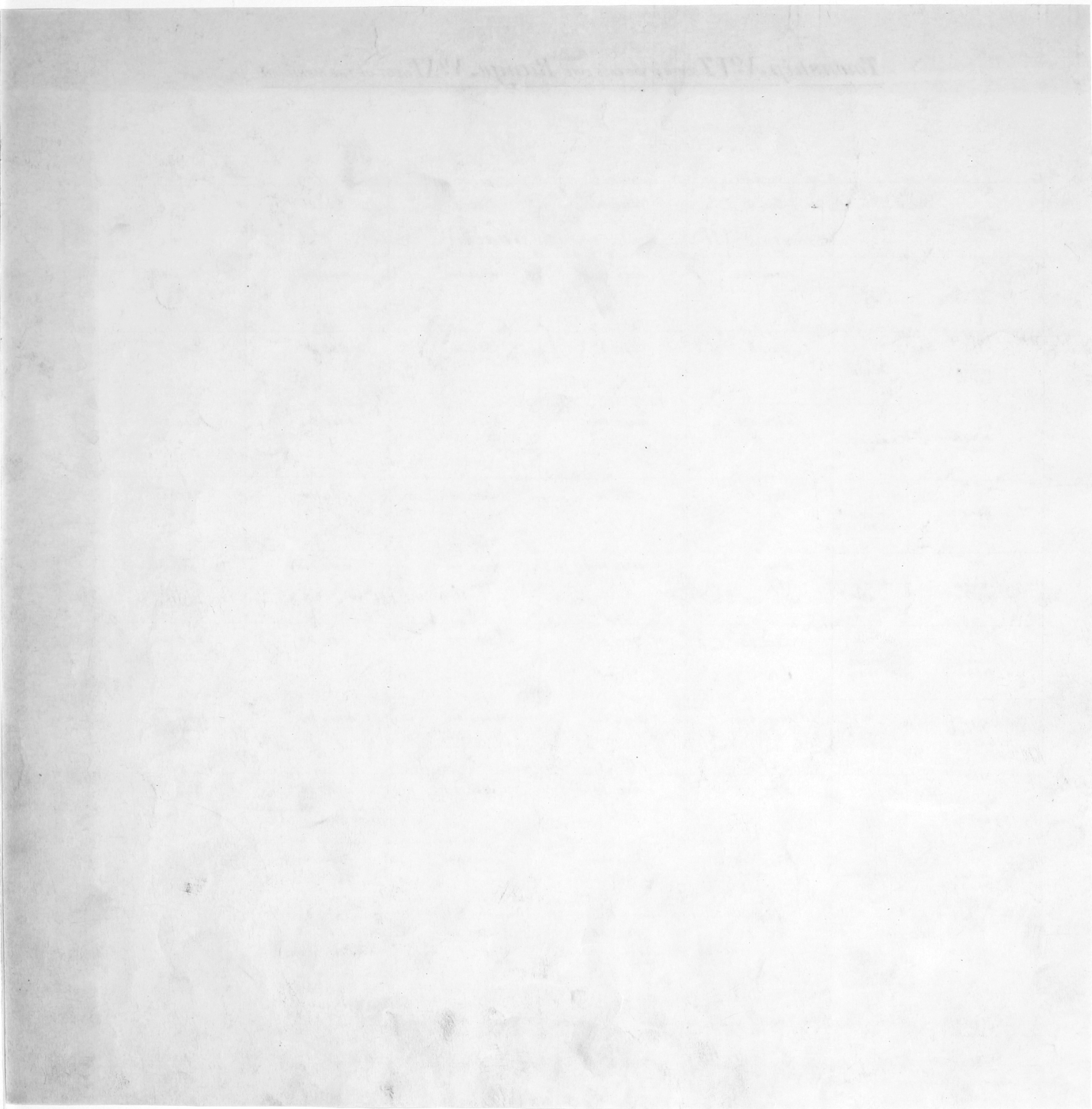
+



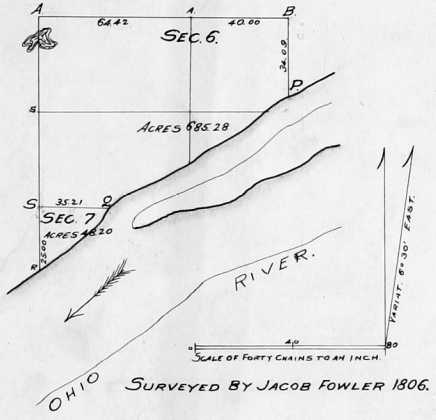
Township N^o VI SOUTH OF THE BASE LINE Range N^o XI WEST OF THE MERIDIAN. 7



SURVEYED BY JACOB FOWLER 1806.



Township N^o VII SOUTH OF THE BASE LINE Range N^o IX WEST OF THE MERIDIAN.

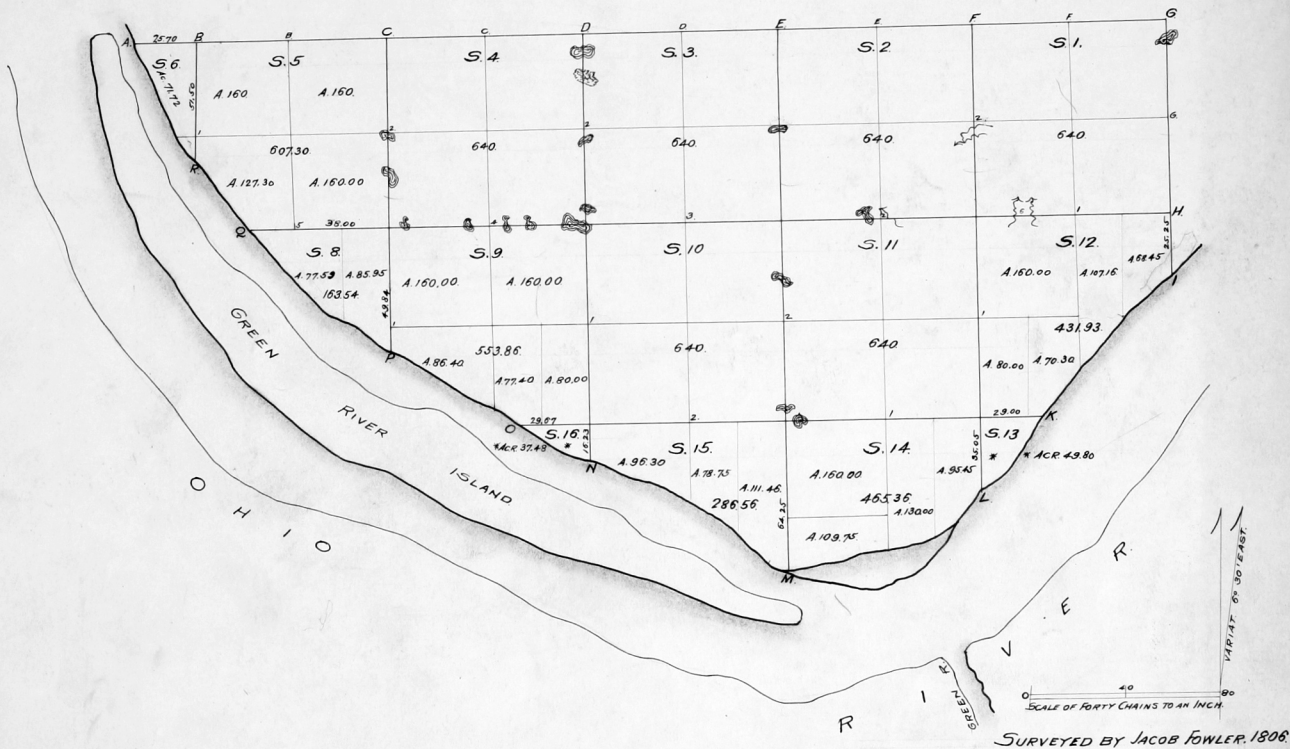


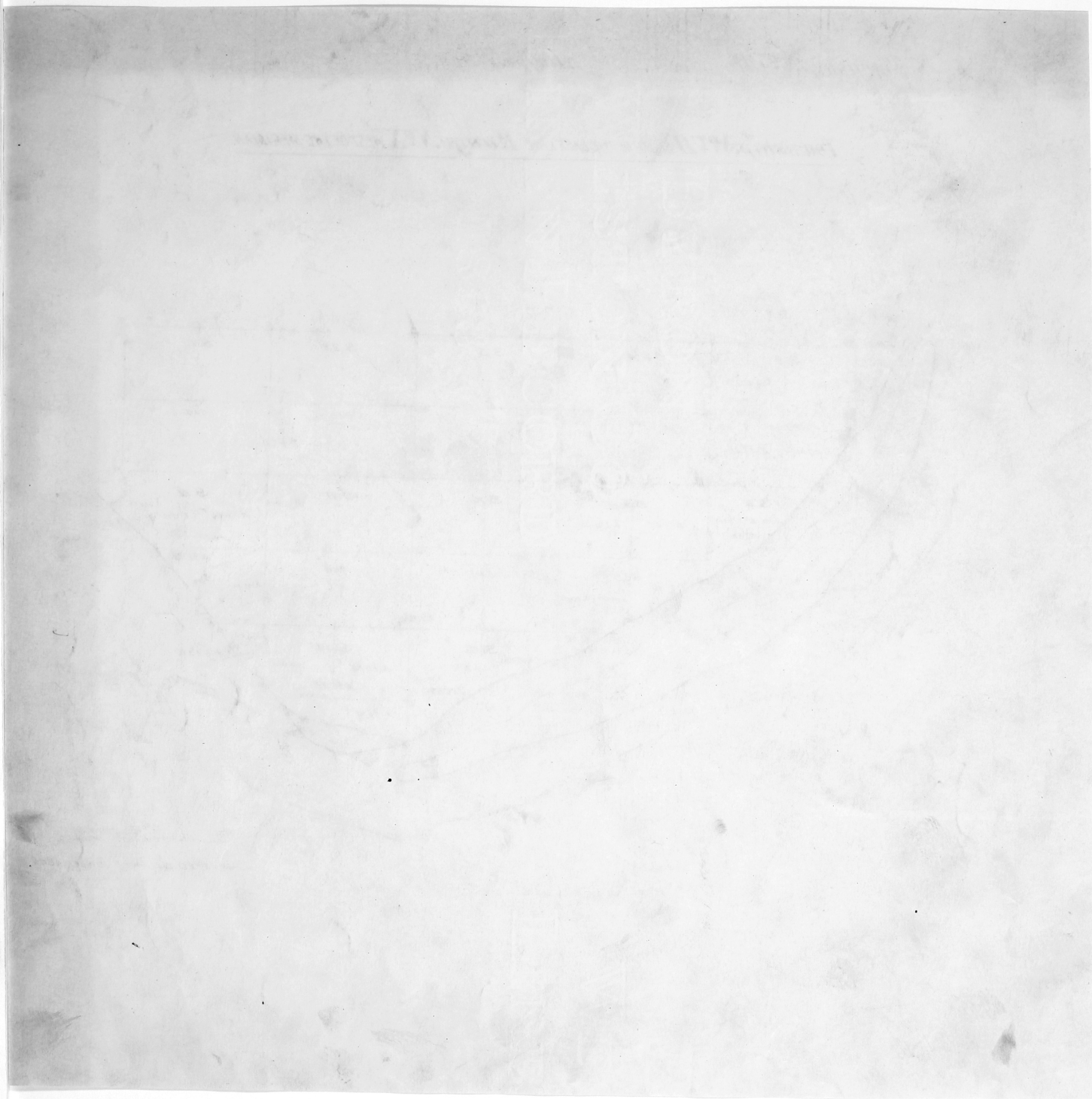
1871
1872

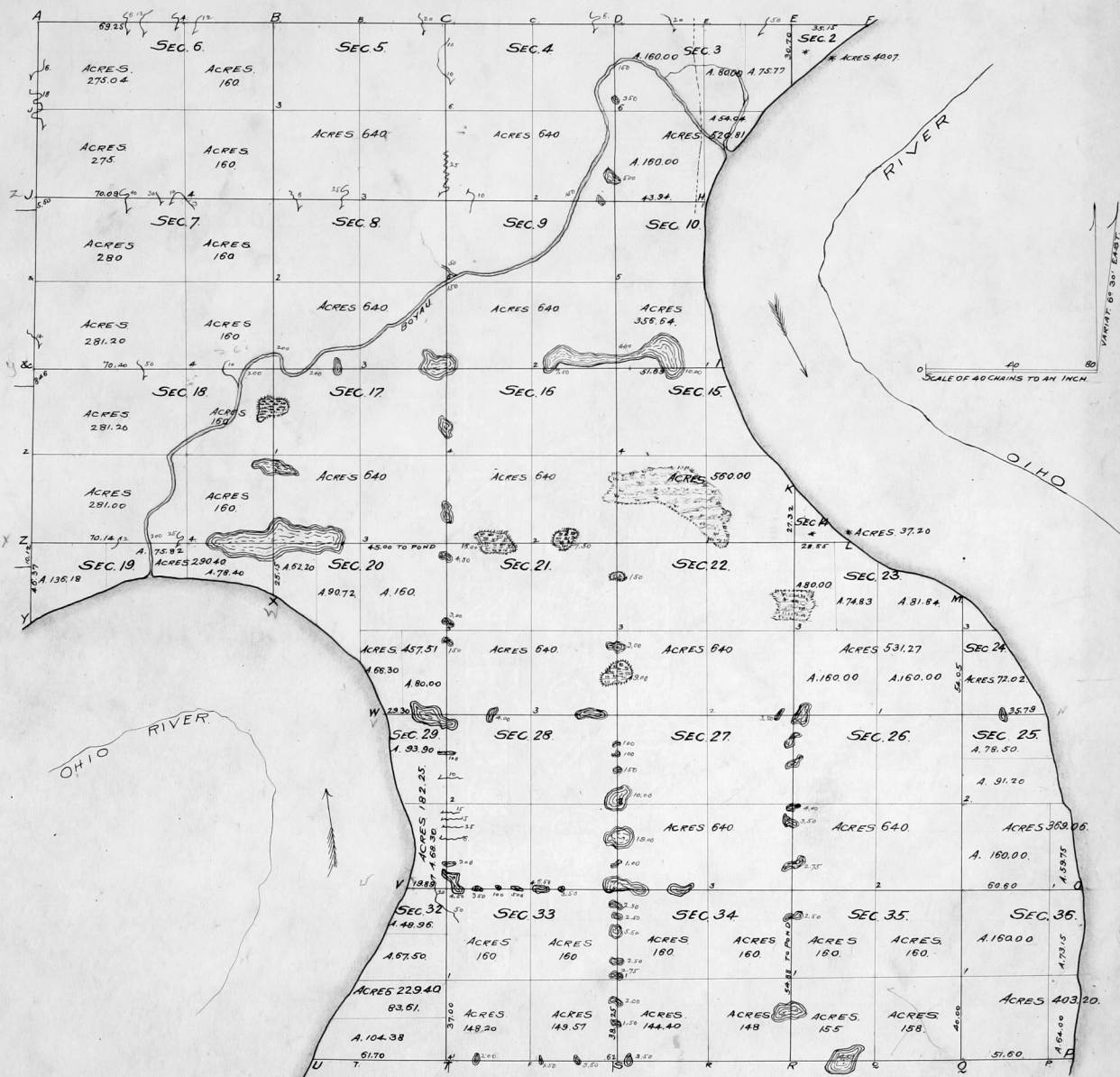


1873

Township N^o VII SOUTH OF THE BASE LINE Range N^o X WEST OF THE MERIDIAN. 9







SURVEYED BY JACOB FOWLER, 1806.

Handwritten text at the top of the page, possibly a title or header, which is mirrored and difficult to read.

Handwritten text in the upper section of the page, appearing to be a list or set of instructions.



Journals of the ...

The image shows a large, faint table or ledger. It has a grid-like structure with approximately 10-12 columns and 20-25 rows. The text within the cells is extremely light and illegible. The table appears to be a record-keeping document, possibly a journal or an account book, given the title at the top.

COUNTY OF
VANDERBURGH, IN

OLD SURVEYS
1806
PLAT BOOK

END