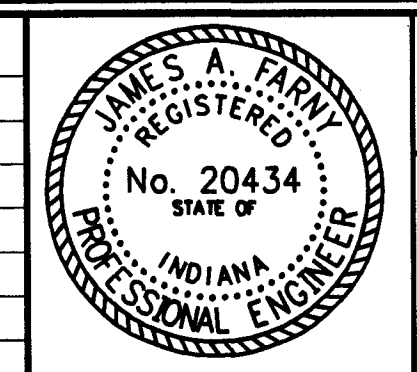


S:\Projects\102-0183\yc015003.dwg 06/29/03 19:59 Rosa

This drawing is the property of Bernardin Lochmueller & Associates. All layouts and designs were created for use on a specific project. No part of this design or drawing shall be disclosed to any person or organization without the express written permission of Bernardin Lochmueller & Associates. Contractors shall verify and be responsible for all dimensions and conditions on the site. Contractor shall notify Bernardin, Lochmueller & Associates of any variations from the design shown hereon.

Num.	Description	Date



CROSS SECTION
FOR
HARLAN AVE. EXTENSION
VANDERBURGH COUNTY, INDIANA

Prepared By: **BERNARDIN LOCHMUELLER & ASSOC., INC.**
Planners - Engineers - Surveyors
609 Hoop Ave.
Evansville, IN 47715 (812) 478-6200

PROJECT NO.: 102-0183
ISSUED: **43**