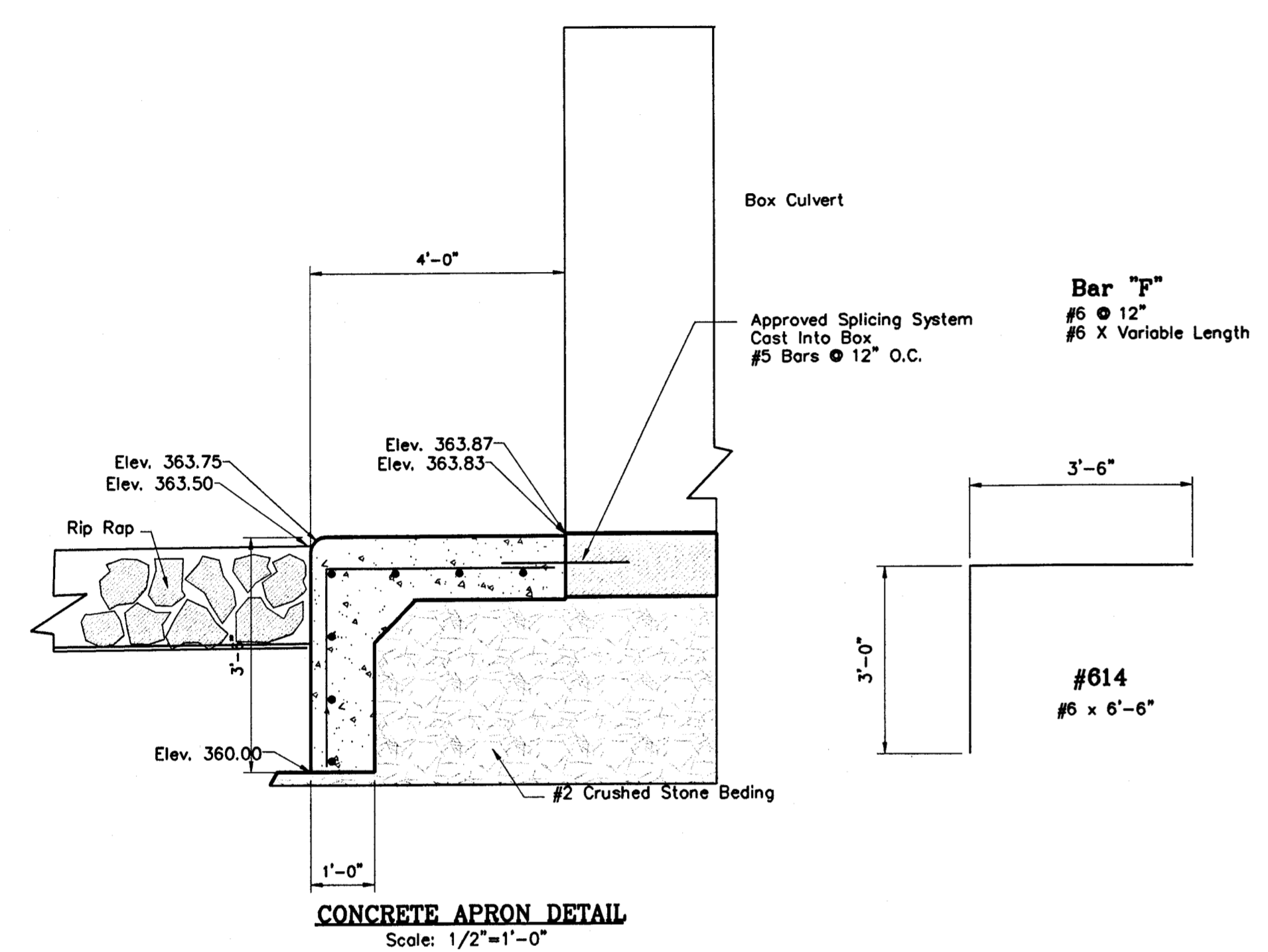
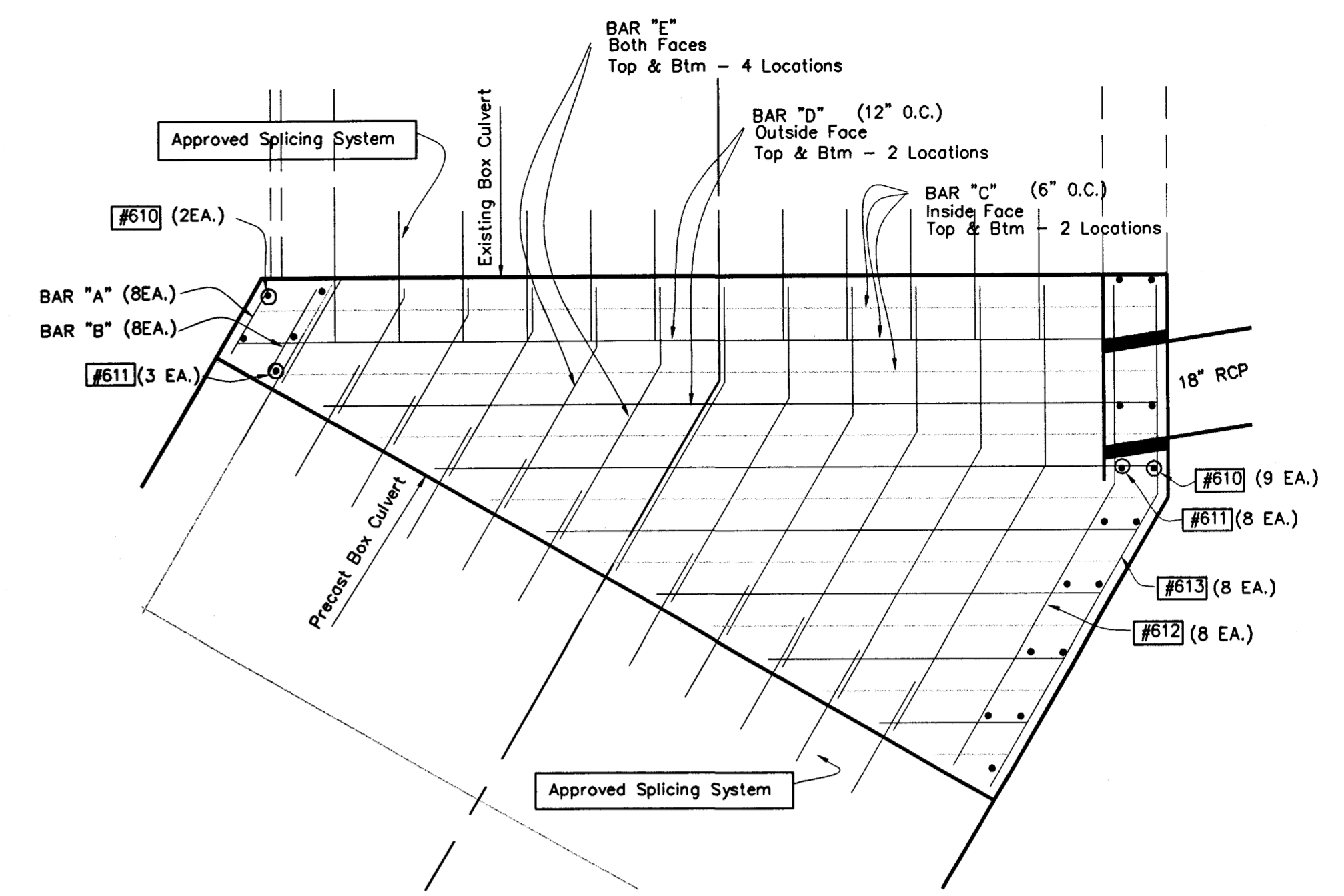
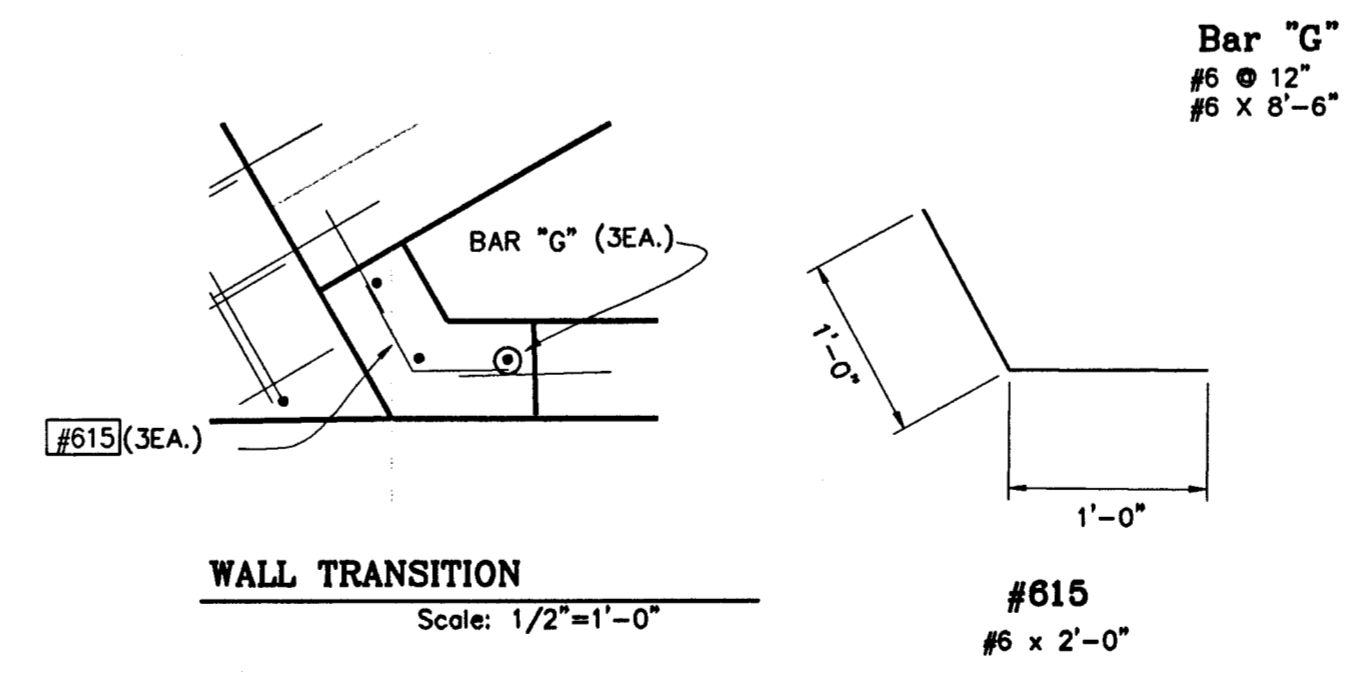
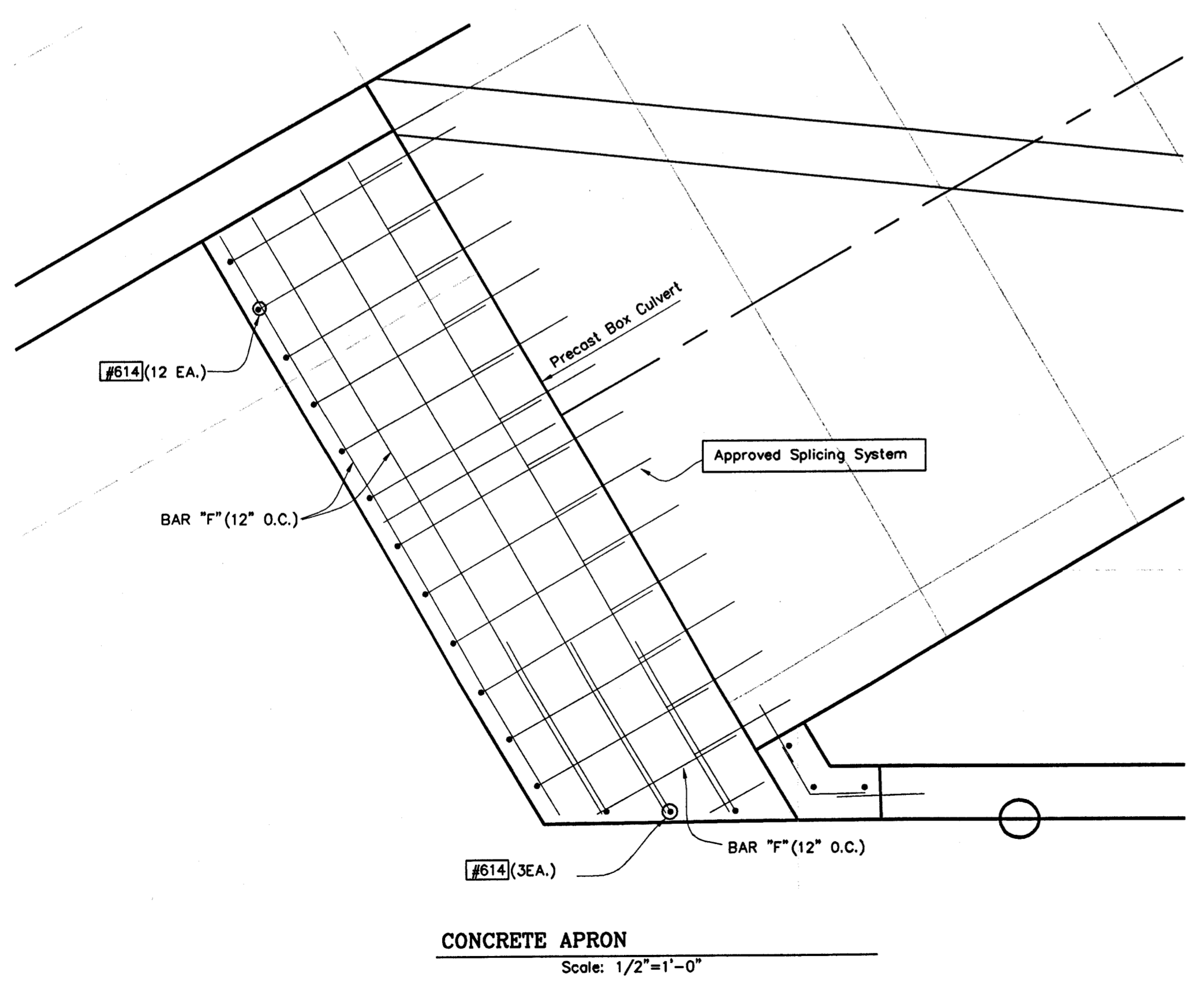
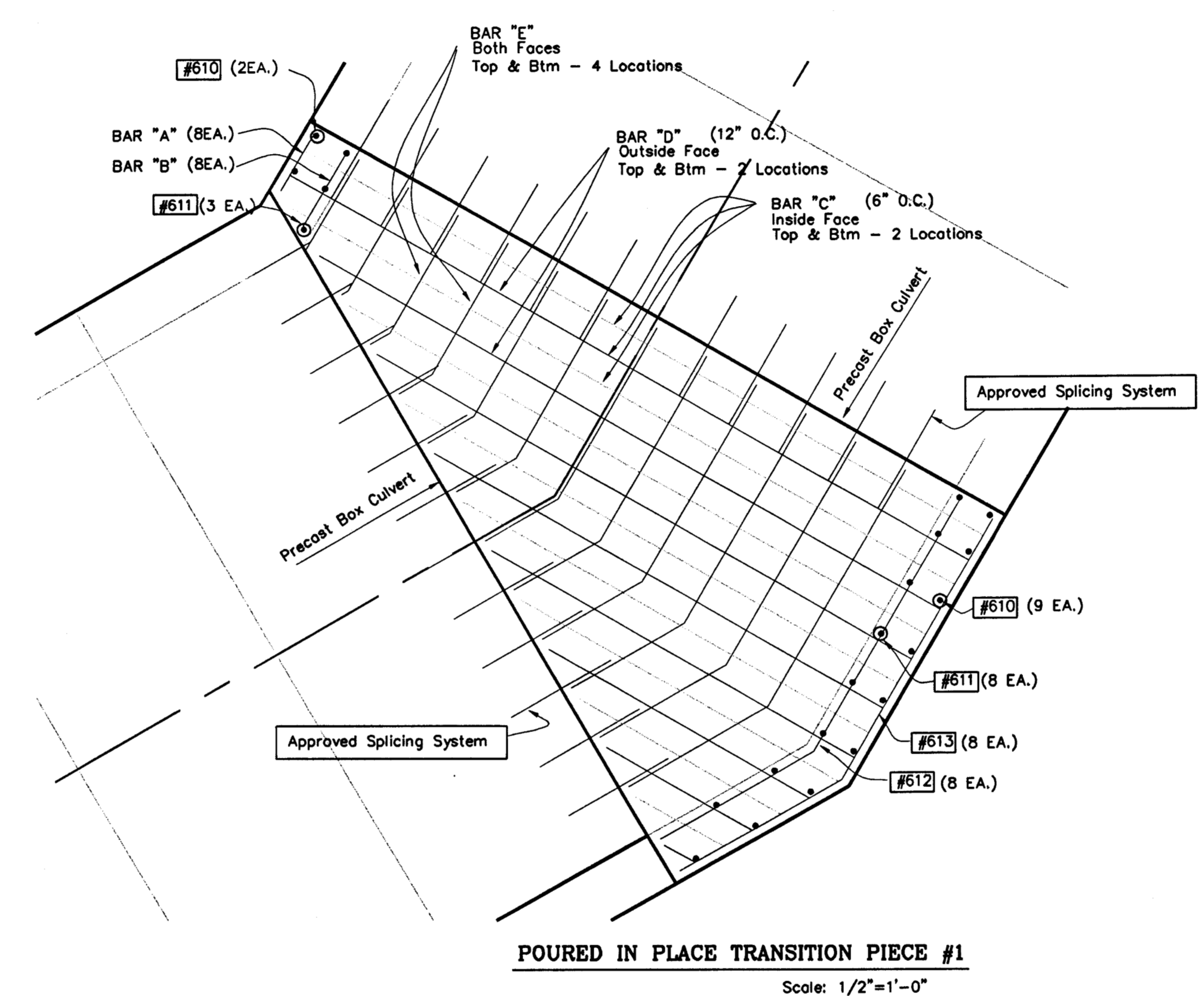


Bar "A"
#6 @ 12"
#6 x 1'-2"
Bar "B"
#6 @ 12"
#6 x 1'-6"
Bar "C"
#6 @ 6"
#6 X Variable Length
Bar "D"
#6 @ 12"
#6 X Variable Length
Bar "E"
#6 @ 12"
#6 X Variable Length



Bar "F"
#6 @ 12"
#6 X Variable Length

#614 #6 x 6'-6"



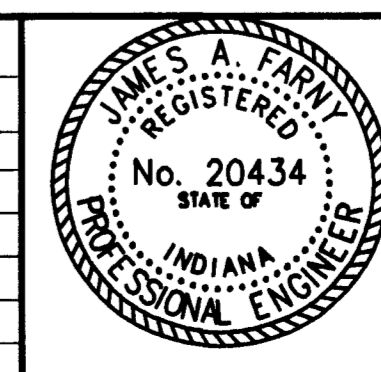
Bar "G"
#6 @ 12"
#6 x 8'-6"

BILL OF MATERIALS
WING A, WING B, WING C, WING D, & HEADWALLS

REINFORCING STEEL			
SIZE & MARK	NO. OF BARS	LENGTH	MASS (Lbs.)
#610	22	17'-10"	589
#611	22	14'-4"	474
#612	16	8'-0"	192
#613	16	8'-6"	205
#6 BAR A	16	1'-2"	28
#6 BAR B	16	1'-6"	36
#6 BAR C	VARIABLE LENGTHS		786
#6 BAR D	VARIABLE LENGTHS		372
#6 BAR E	VARIABLE LENGTHS		770
#614	15	6'-6"	146
#6 BAR F	VARIABLE LENGTHS		83
#615	8	2'-0"	24
#6 BAR G	3	8'-6"	38
TOTAL #6 BARS			3743
#4 WING WALL FOOTINGS			
TOTAL #4 BARS:			1797
TOTAL REINFORCING STEEL:			5540
CONCRETE			
Concrete Class A (Trans #1)			8.5 cyds
Concrete Class A (Trans #2)			8.5 cyds
Concrete Class A (Apron)			3.3 cyds
Concrete Class A (Wall Trans)			0.8 cyds
Total Class "A" Concrete			21.1 cyds
Concrete Class B (Wall Footings)			74.7 cyds

This drawing is the property of Bernardin Lochmuller & Associates. All layouts and designs were created for use on a specific project. No part of this design or drawing shall be disclosed to any person or organization without the express written permission of Bernardin Lochmuller & Associates. Contractors shall verify and be responsible for all dimensions and conditions on the site. Contractor shall notify Bernardin, Lochmuller & Associates of any variations from the design shown hereon.

Num.	Description	Date



BOX CULVERT & WALL DETAIL
FOR
HARLAN AVE. EXTENSION
VANDERBURGH COUNTY, INDIANA

Prepared By: **BERNARDIN LOCHMUELLER & ASSOC., INC.**
Planners - Engineers - Surveyors
2205 High Road
Evansville, IN 47715 (812)478-8200

PROJECT NO.: **20**
ISSUED: