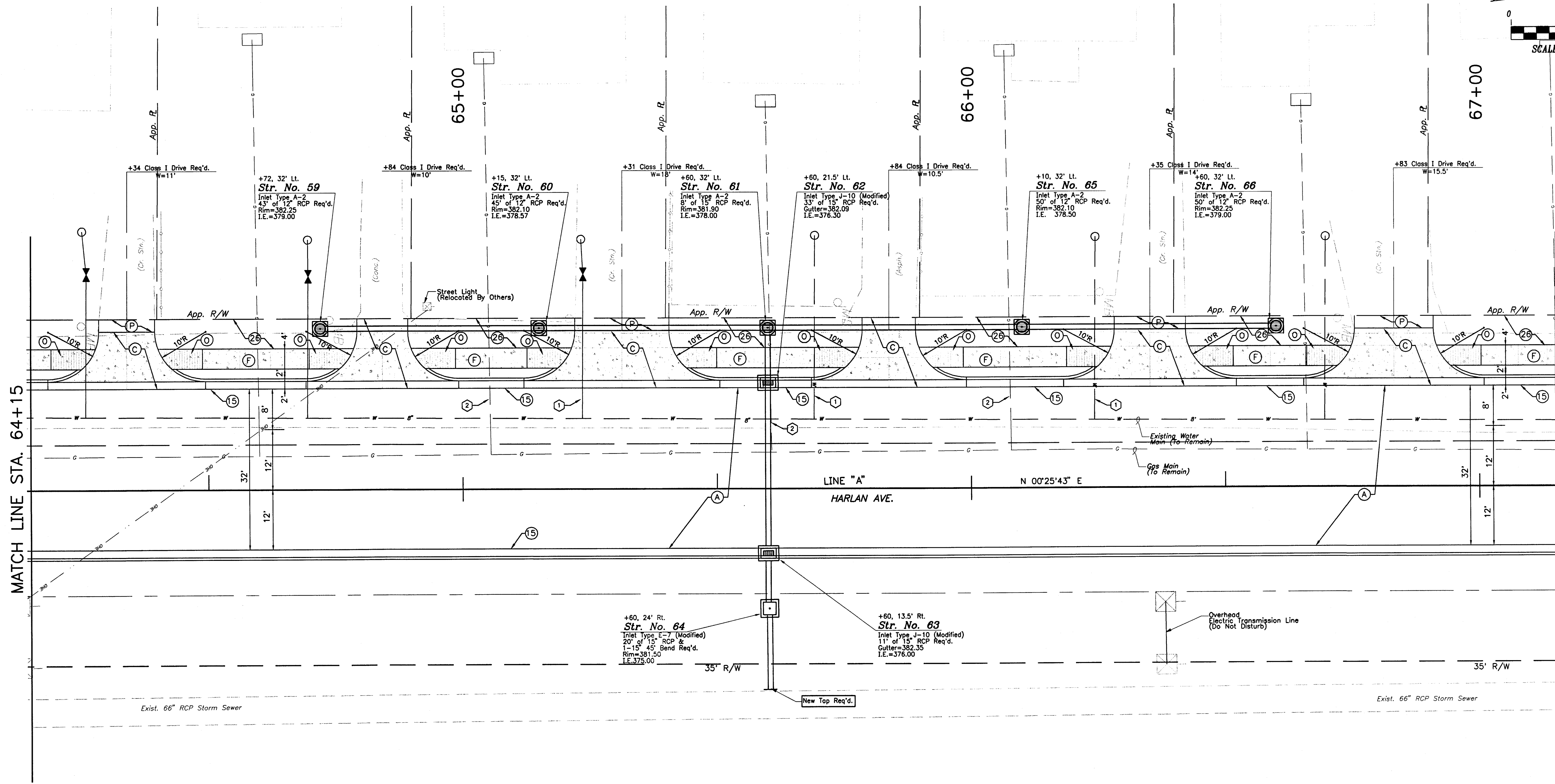


MATCH LINE STA. 64+15

MATCH LINE STA. 67+15



+60, 24' Rt.
Str. No. 64
Inlet Type E-7 (Modified)
20' of 15" RCP &
1-15' 45" Bend Req'd.
Rim=381.50
I.E.=375.00

+60, 13.5' Rt.
Str. No. 63
Inlet Type J-10 (Modified)
11' of 15" RCP Req'd.
Gutters=382.35
I.E.=376.00

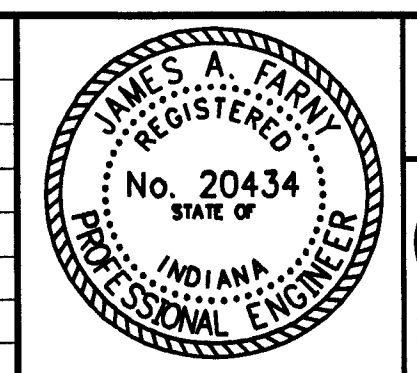
Overhead
Electric Transmission Line
(Do Not Disturb)

Legend

- (A) 110#/SYS HMA Surface, Type B on
220#/SYS HMA Intermediate, Type B on
330#/SYS HMA Base, Type B on
6" Compacted Aggr. Base, 0, Size No. 53
- (C) Cement Concrete Pavement For Driveways, 6"
- (F) Concrete Sidewalk, 5"
- (O) INDOT Curb Ramp Type "O"
- (P) Compacted Aggregate, No. 73
- (1) 3/4" Service Renewal
- (2) Gas Line Reconnect
- (15) Curb & Gutter, Concrete
- (25) Sodding, Nursery

This drawing is the property of Bernardin Lochmueller & Associates. All layouts and designs were created for use on a specific project. No part of this design or drawing shall be disclosed to any person or organization without the express written permission of Bernardin Lochmueller & Associates. Contractors shall verify and be responsible for all dimensions and conditions on the site. Contractor shall notify Bernardin, Lochmueller & Associates of any variations from the design shown hereon.

Num.	Description	Date



CONSTRUCTION DETAIL
FOR
HARLAN AVE. EXTENSION
VANDERBURGH COUNTY, INDIANA

Prepared By: BERNARDIN LOCHMUELLER & ASSOC., INC. Planners - Engineers - Surveyors Evansville, IN 47715 (812)479-8202	DATE: _____ PROJECT NO.: 102-0183 ISSUED: _____
---	---

15