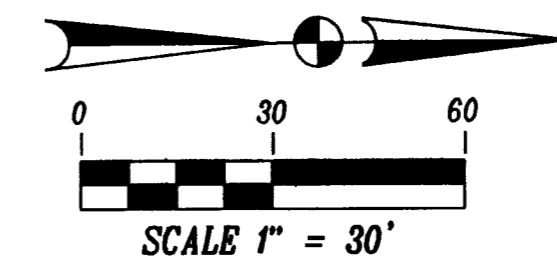
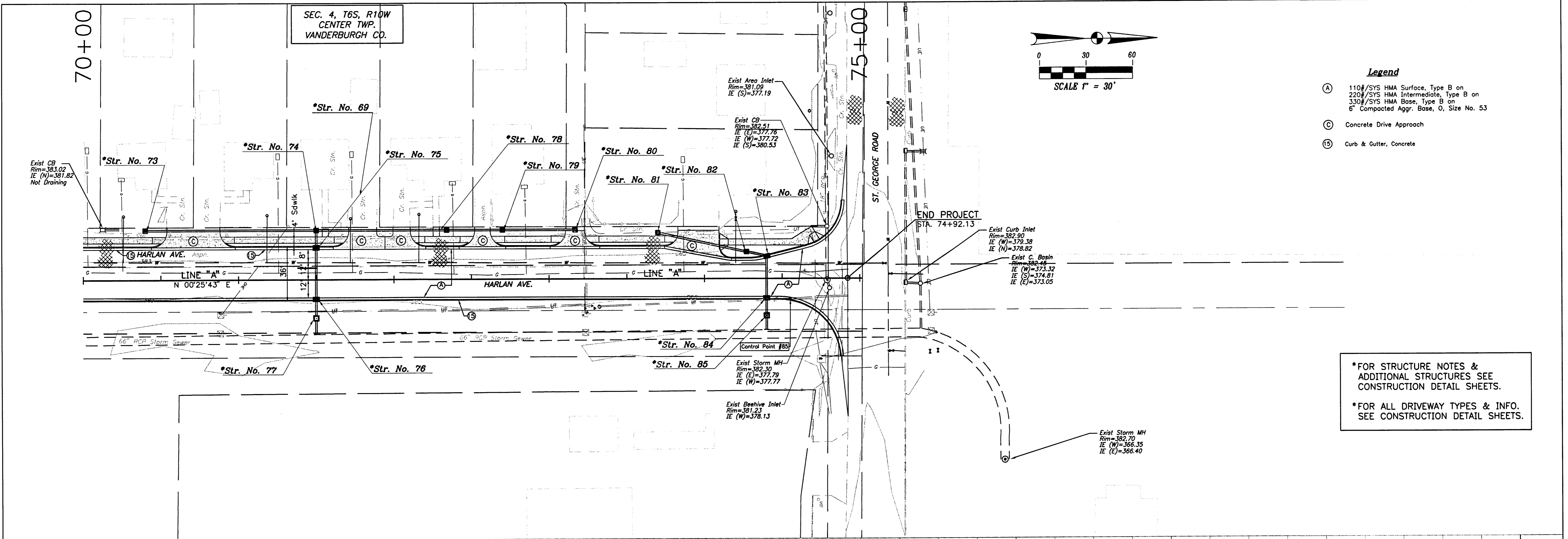


SEC. 4, T6S, R10W
CENTER TWP.
VANDERBURGH CO.

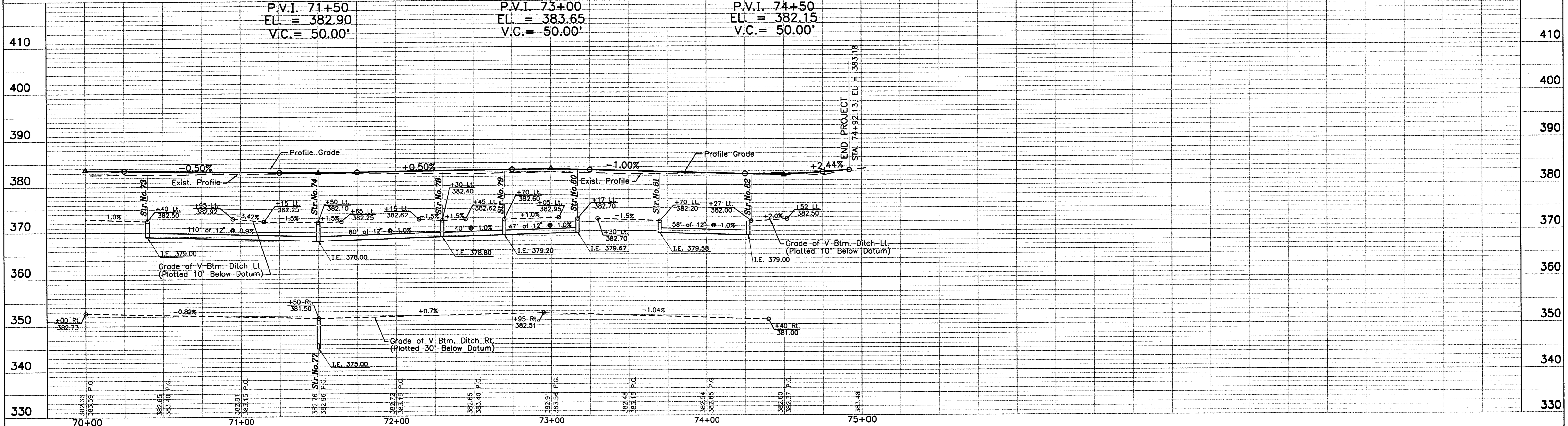


- Legend**
- (A) 110#/SYS HMA Surface, Type B on
220#/SYS HMA Intermediate, Type B on
330#/SYS HMA Base, Type B on
6" Compacted Aggr. Base, O, Size No. 53
 - (C) Concrete Drive Approach
 - (B) Curb & Gutter, Concrete



*FOR STRUCTURE NOTES &
ADDITIONAL STRUCTURES SEE
CONSTRUCTION DETAIL SHEETS.

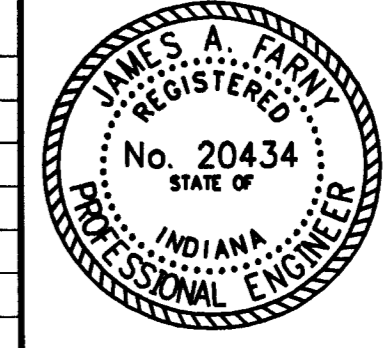
*FOR ALL DRIVEWAY TYPES & INFO.
SEE CONSTRUCTION DETAIL SHEETS.



S:\Projects\102-0183\102-0183.dwg 06/29/01 10:17 Ross

This drawing is the property of Bernardin Lochmuller & Associates. All layouts and designs were created for use on a specific project. No part of this design or drawing shall be disclosed to any person or organization without the express written permission of Bernardin Lochmuller & Associates. Contractors shall verify and be responsible for all dimensions and conditions on the site. Contractor shall notify Bernardin, Lochmuller & Associates of any variations from the design shown herein.

Num.	Description	Date



PLAN & PROFILE
FOR
HARLAN AVE. EXTENSION
VANDERBURGH COUNTY, INDIANA

Prepared by: **BERNARDIN LOCHMULLER & ASSOC., INC.**
Planners - Engineers - Surveyors
6205 Ross Road
Evansville, IN 47715 (812)479-8200

DATE: **10-2-01**
PROJECT NO.: **102-0183**
ISSUED:

12