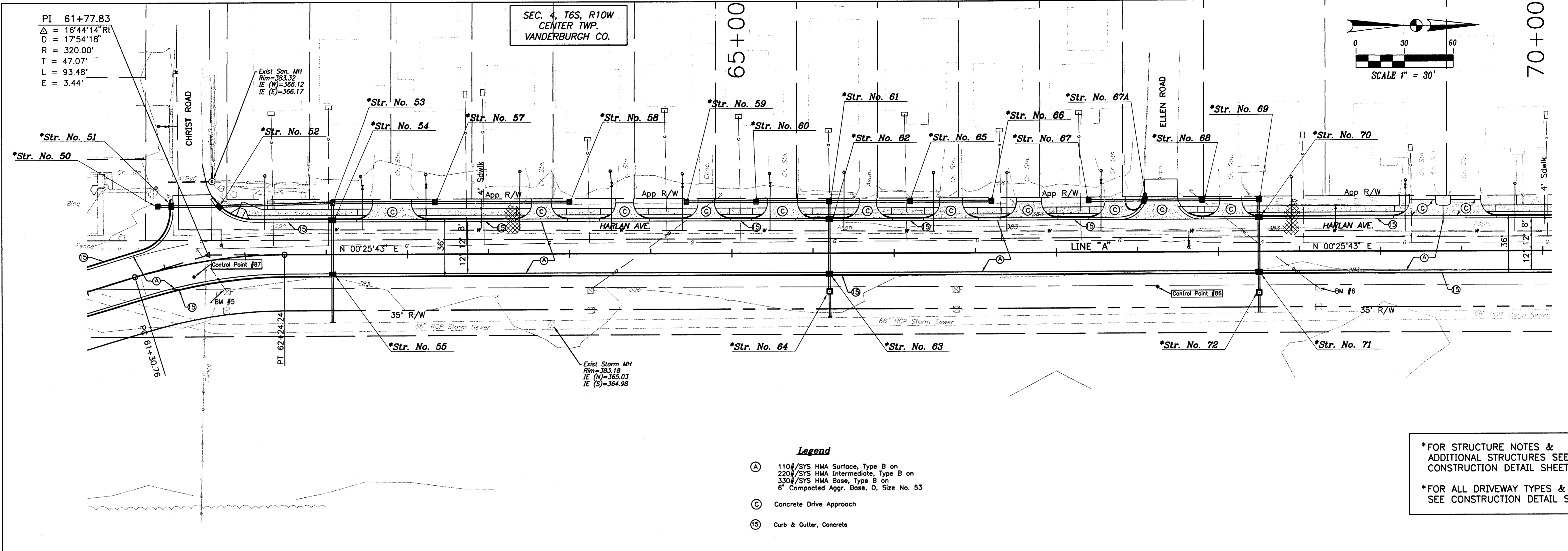
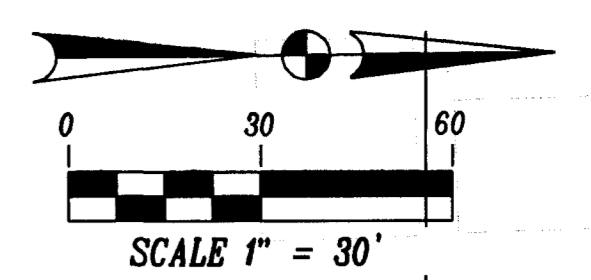


PI 61+77.83
 $\Delta = 16'44''14''$ Rt
 $D = 1754'18''$
 $R = 320.00'$
 $T = 47.07'$
 $L = 93.48'$
 $E = 3.44'$

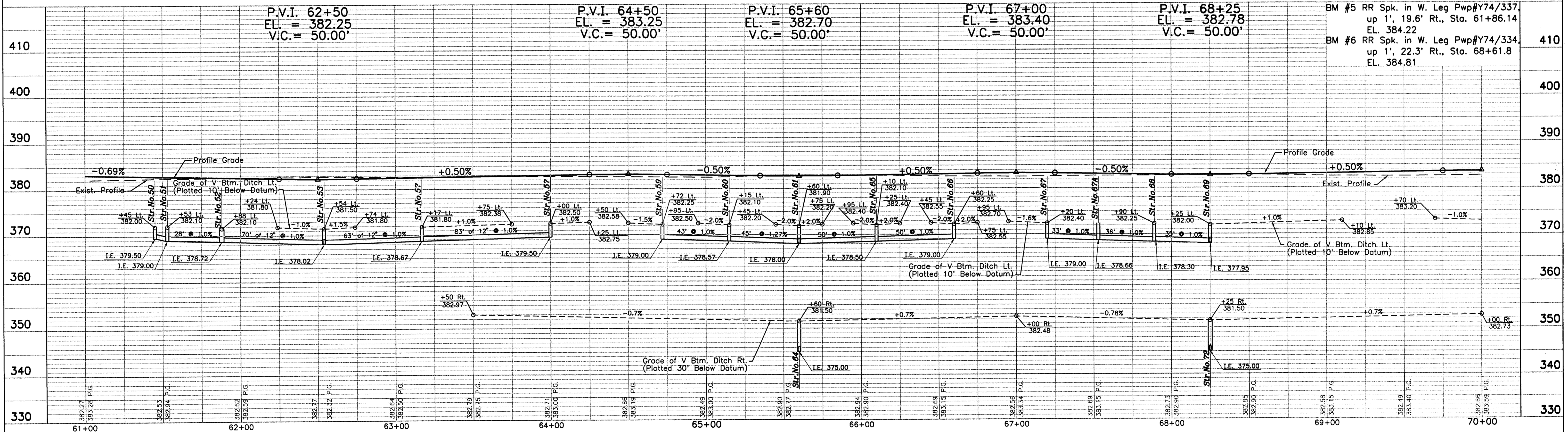
SEC. 4, T6S, R10W
 CENTER TWP.
 VANDERBURGH CO.



- Legend**
- (A) 110#/SYS HMA Surface, Type B on
 220#/SYS HMA Intermediate, Type B on
 330#/SYS HMA Base, Type B on
 6" Compacted Aggr. Base, 0, Size No. 53
 - (C) Concrete Drive Approach
 - (S) Curb & Gutter, Concrete

*FOR STRUCTURE NOTES &
 ADDITIONAL STRUCTURES SEE
 CONSTRUCTION DETAIL SHEETS.

*FOR ALL DRIVEWAY TYPES & INFO.
 SEE CONSTRUCTION DETAIL SHEETS.



BM #5 RR Spk. in W. Leg Pwp#Y74/337
 up 1', 19.6' Rt., Sta. 61+86.14
 EL. 384.22

BM #6 RR Spk. in W. Leg Pwp#Y74/334
 up 1', 22.3' Rt., Sta. 68+61.8
 EL. 384.81

S:\Projects\102-0183\102-0183.dwg 06/29/03 10:16 Ross

This drawing is the property of Bernardin Lochmueller & Associates. All layouts and designs were created for use on a specific project. No part of this design or drawing shall be disclosed to any person or organization without the express written permission of Bernardin Lochmueller & Associates. Contractors shall verify and be responsible for all dimensions and conditions on the site. Contractor shall notify Bernardin Lochmueller & Associates of any variations from the design shown hereon.

Num.	Description	Date



PLAN & PROFILE
 FOR
HARLAN AVE. EXTENSION
 VANDERBURGH COUNTY, INDIANA

Prepared By: **BERNARDIN LOCHMUELLER & ASSOC., INC.**
 Planners - Engineers - Surveyors
 Evansville, IN 47715 (812)479-8200

PROJECT NO.: 102-0183
 DATE: _____
 SHEET: **11**