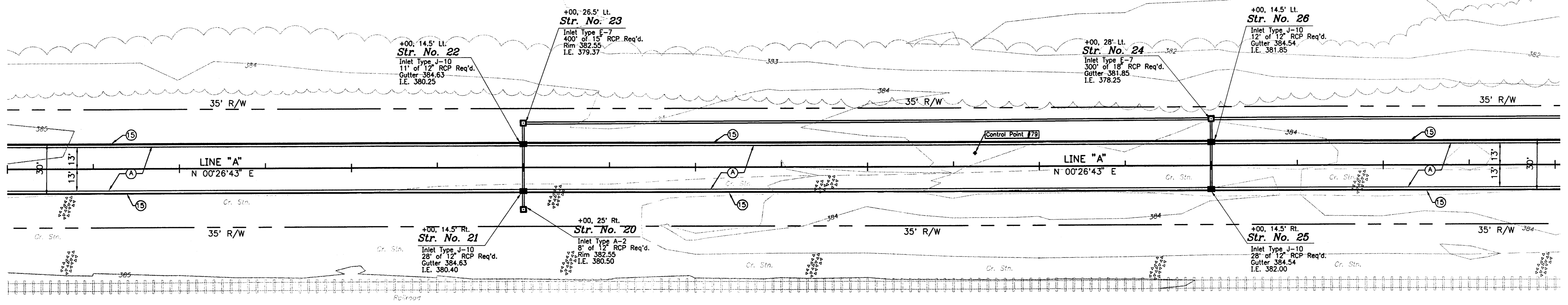
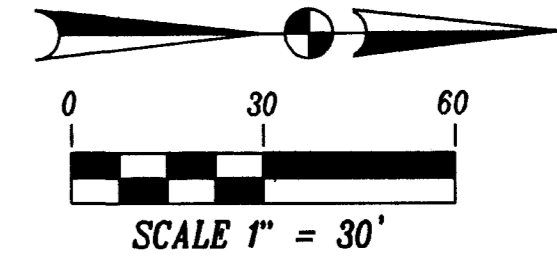


25+00

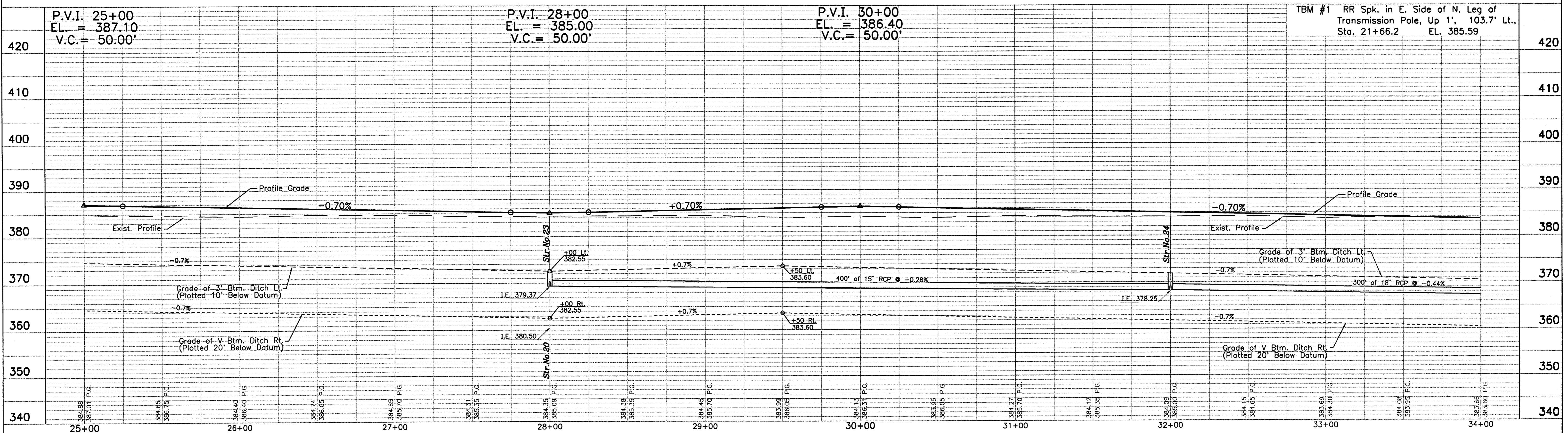
30+00

34+00

SEC. 9, T6S, R10W  
CENTER TWP.  
VANDERBURGH CO.



- Legend**
- (A) 110#/SYS HMA Surface, Type B on  
220#/SYS HMA Intermediate, Type B on  
330#/SYS HMA Base, Type B on  
6" Compacted Aggr. Base, O, Size No. 53
  - (15) Curb & Gutter, Concrete



S:\Projects\102-0183\102-0183.dwg 06/29/03 10:11 Ross

This drawing is the property of Bernardin Lochmueller & Associates. All layouts and designs were created for use on a specific project. No part of this design or drawing shall be disclosed to any person or organization without the express written permission of Bernardin Lochmueller & Associates. Contractors shall verify and be responsible for all dimensions and conditions on the site. Contractor shall notify Bernardin, Lochmueller & Associates of any variations from the design shown hereon.

Num.	Description	Date



**PLAN & PROFILE**  
FOR  
**HARLAN AVE. EXTENSION**  
VANDERBURGH COUNTY, INDIANA

Prepared by  
**BERNARDIN LOCHMUELLER & ASSOC., INC.**  
Planners - Engineers - Surveyors  
Evansville, IN 47715 (812)479-6200

DATE: PROJECT NO.: 102-0183  
ISSUED: 7