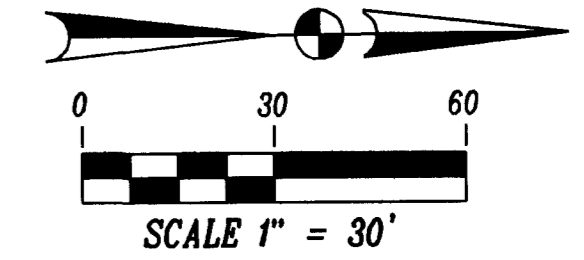


16+00

20+00

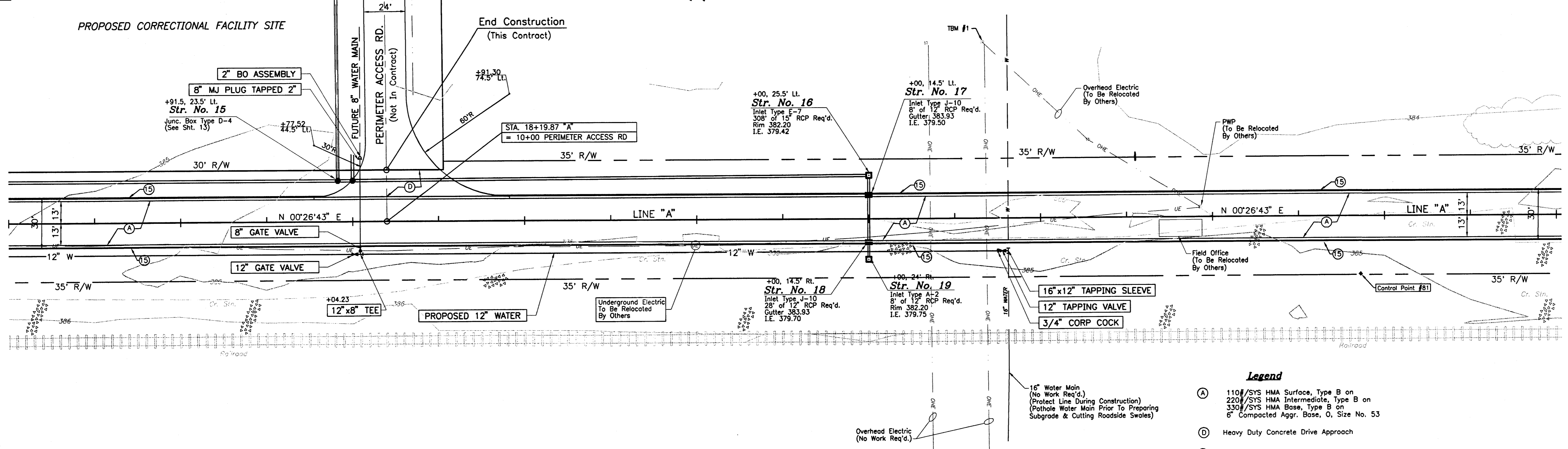
25+00

SEC. 9, T6S, R10W  
CENTER TWP.  
VANDERBURGH CO.

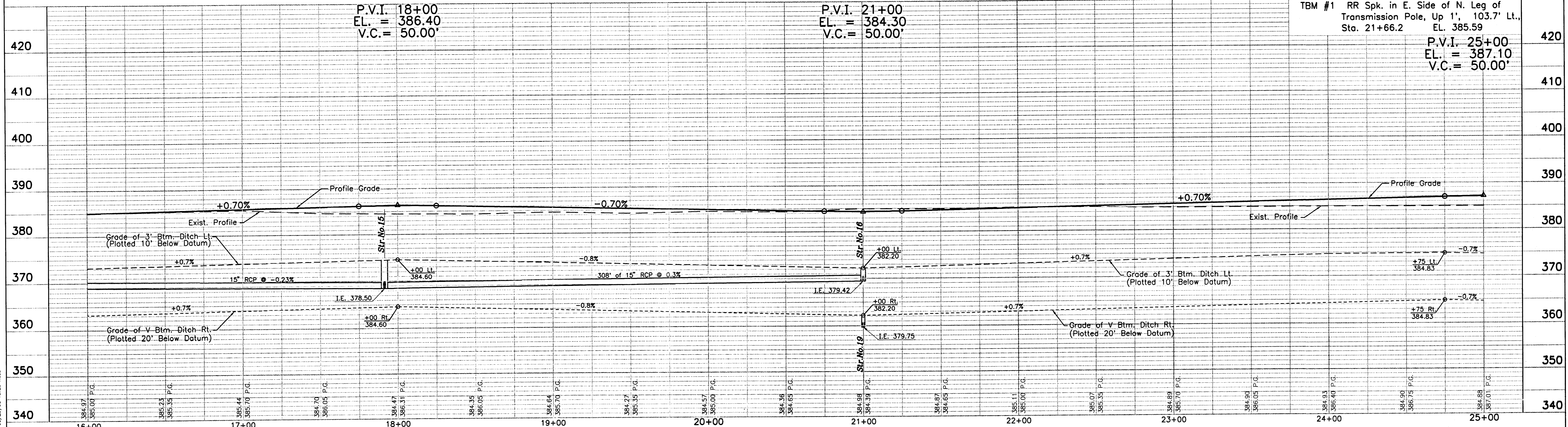


PROPOSED CORRECTIONAL FACILITY SITE

End Construction  
(This Contract)



- Legend**
- (A) 110#/SYS HMA Surface, Type B on 220#/SYS HMA Intermediate, Type B on 330#/SYS HMA Base, Type B on 6" Compacted Agr. Base, O, Size No. 53
  - (D) Heavy Duty Concrete Drive Approach
  - (S) Curb & Gutter, Concrete



S:\Projects\102-0183\Map0003.dwg 05/29/03 18:29 Rom

This drawing is the property of Bernardin Lochmueller & Associates. All layouts and designs were created for use on a specific project. No part of this design or drawing shall be disclosed to any person or organization without the express written permission of Bernardin Lochmueller & Associates. Contractors shall verify and be responsible for all dimensions and conditions on the site. Contractor shall notify Bernardin, Lochmueller & Associates of any variations from the design shown hereon.

Num.	Description	Date



**PLAN & PROFILE**  
FOR  
**HARLAN AVE. EXTENSION**  
VANDERBURGH COUNTY, INDIANA

Prepared by: **BERNARDIN LOCHMUELLER & ASSOC., INC.**  
Planners - Engineers - Surveyors  
620 West Ave.  
Evansville, IN 47715 (812)419-6200

PROJECT NO.: 102-0183  
ISSUED: **6**