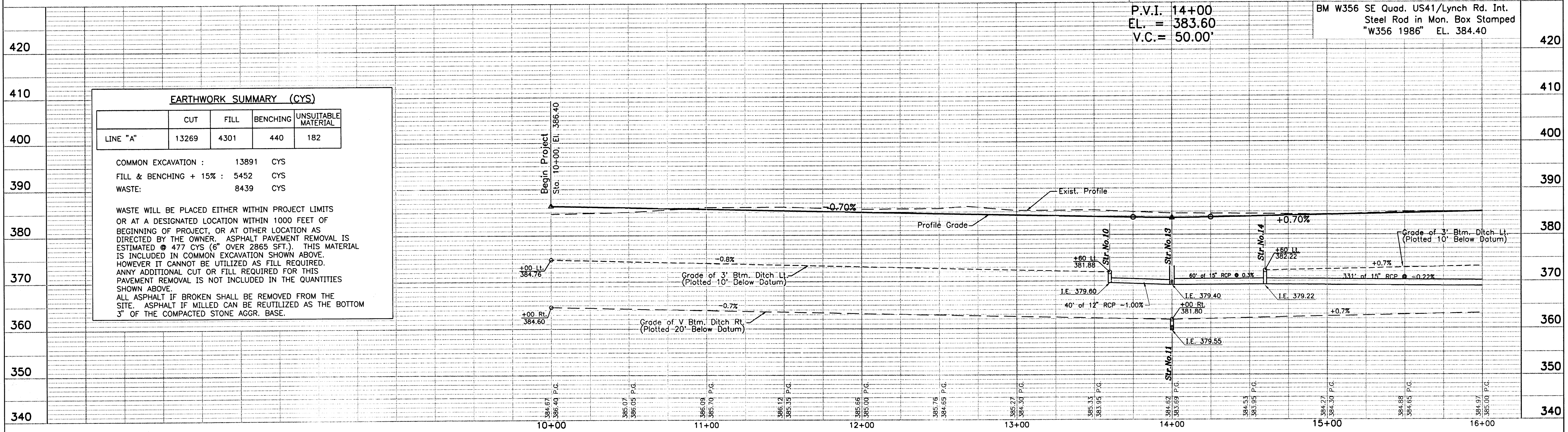
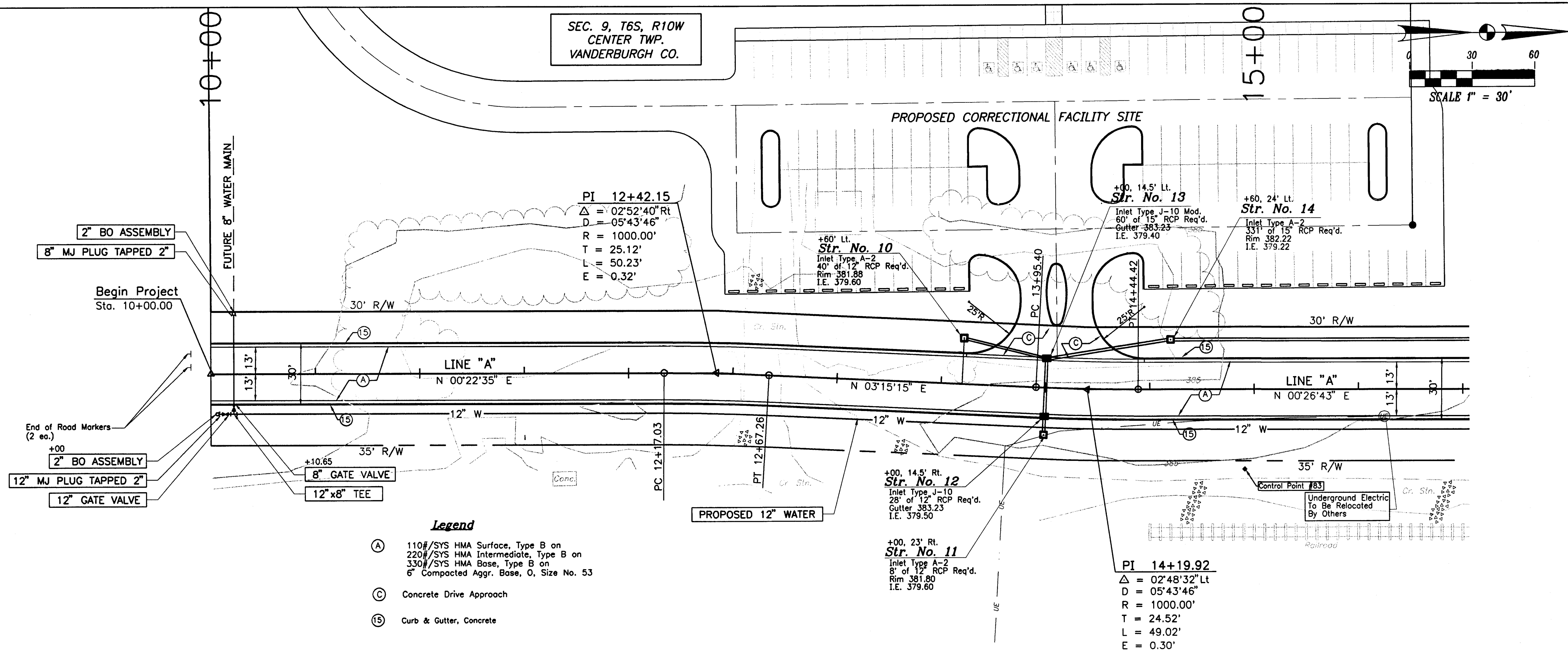


BASE BID WATER MAIN & UTILITY SERVICE		
MATERIAL LIST		
QUANTITY	UNIT	DESCRIPTION
54	LF	6" PVC - C900
1	EA	6" GATE VALVE
2	EA	ALL YELLOW HYDRANT
1	EA	6" - 22 1/2" BEND
1	EA	VALVE - ADJUST TO GRADE
12	EA	NEW WATER SERVICE
13	EA	NEW GAS SERVICE

ALTERNATE BID WATER MAIN		
MATERIAL LIST		
QUANTITY	UNIT	DESCRIPTION
1180	LF	12" PVC - C900
120	LF	8" PVC - C900
3	EA	2" B.O. ASSEMBLY
1	EA	12" MJ PLUG TAPPED 2"
2	EA	8" MJ PLUG TAPPED 2"
2	EA	12" GATE VALVE
2	EA	8" GATE VALVE
2	EA	12" X 8" TEE
1	EA	16" X 12" TAPPING SLEEVE
1	EA	12" TAPPING VALVE
1	EA	3/4" CORP COCK



EARTHWORK SUMMARY (CYS)				
LINE "A"	CUT	FILL	BENCHING	UNSUITABLE MATERIAL
LINE "A"	13269	4301	440	182

COMMON EXCAVATION : 13891 CYS  
 FILL & BENCHING + 15% : 5452 CYS  
 WASTE: 8439 CYS

WASTE WILL BE PLACED EITHER WITHIN PROJECT LIMITS OR AT A DESIGNATED LOCATION WITHIN 1000 FEET OF BEGINNING OF PROJECT, OR AT OTHER LOCATION AS DIRECTED BY THE OWNER. ASPHALT PAVEMENT REMOVAL IS ESTIMATED @ 477 CYS (6" OVER 2865 SFT.). THIS MATERIAL IS INCLUDED IN COMMON EXCAVATION SHOWN ABOVE. HOWEVER IT CANNOT BE UTILIZED AS FILL REQUIRED. ANY ADDITIONAL CUT OR FILL REQUIRED FOR THIS PAVEMENT REMOVAL IS NOT INCLUDED IN THE QUANTITIES SHOWN ABOVE.  
 ALL ASPHALT IF BROKEN SHALL BE REMOVED FROM THE SITE. ASPHALT IF MILLED CAN BE REUTILIZED AS THE BOTTOM 3" OF THE COMPACTED STONE AGGR. BASE.

This drawing is the property of Bernardin Lochmueller & Associates. All layouts and designs were created for use on a specific project. No part of this design or drawing shall be disclosed to any person or organization without the express written permission of Bernardin Lochmueller & Associates.  
 Contractors shall verify and be responsible for all dimensions and conditions on the site. Contractor shall notify Bernardin, Lochmueller & Associates of any variations from the design shown hereon.

**PLAN & PROFILE**  
 FOR  
**HARLAN AVE. EXTENSION**  
 VANDERBURGH COUNTY, INDIANA

DATE: \_\_\_\_\_  
 PROJECT NO.: 102-0183  
 SHEET: 5

BERNARDIN LOCHMUELLER & ASSOC., INC.  
 Planners - Engineers - Surveyors  
 Evansville, IN 47715 (812)479-8200

S:\Projects\102-0183\102-0183.dwg 06/20/03 09:08 AM