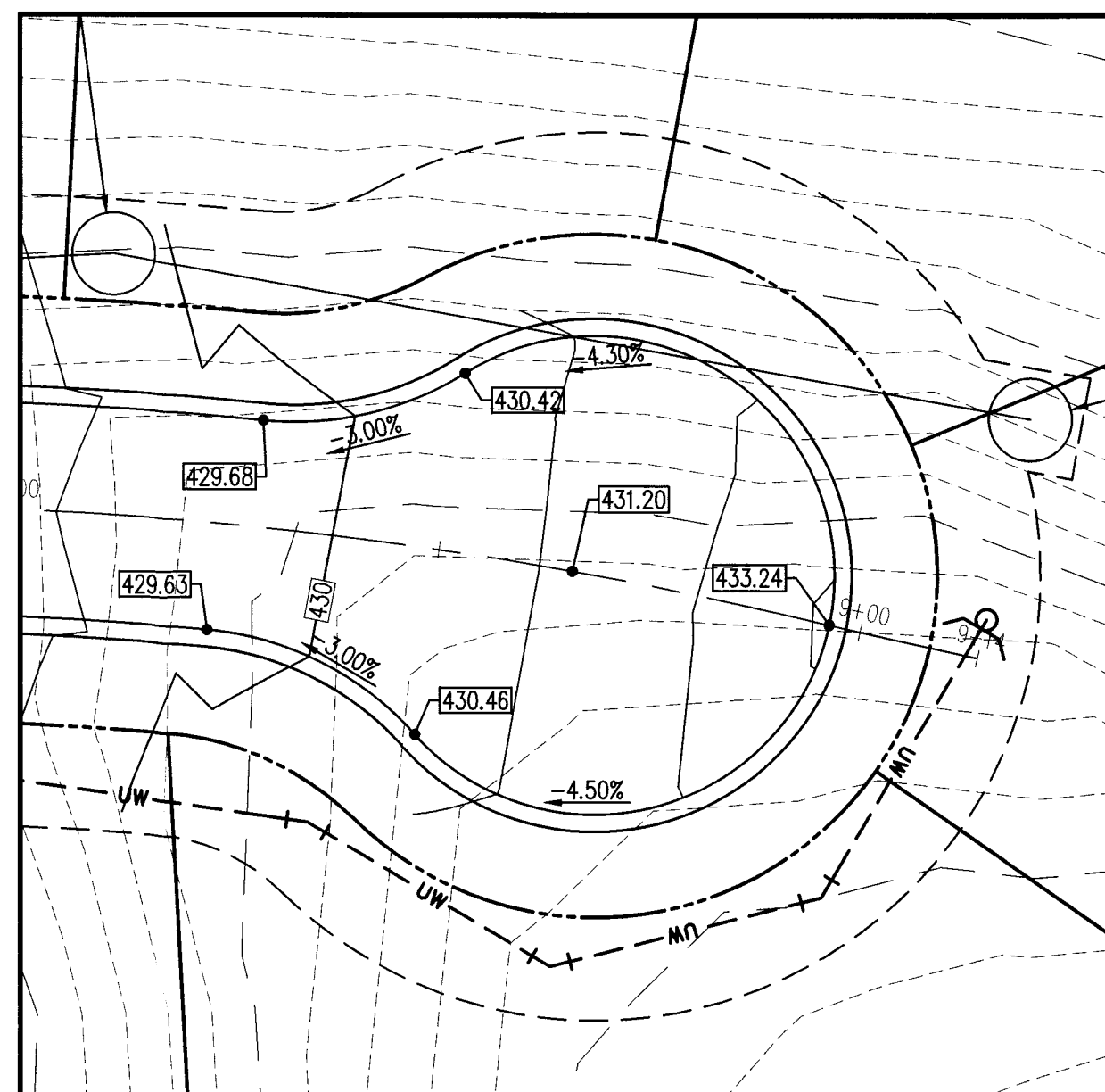
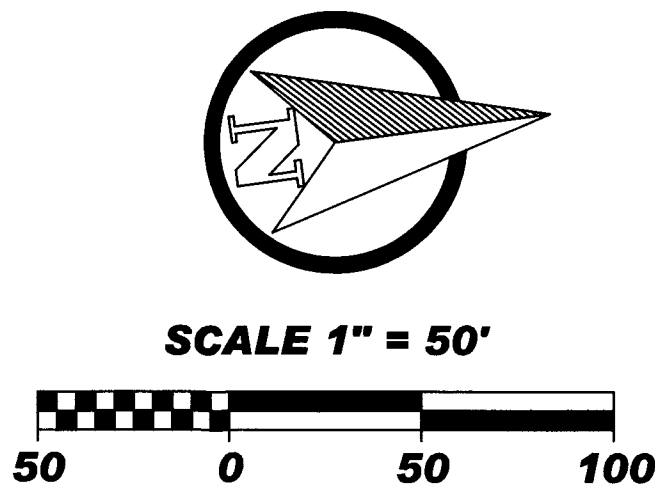
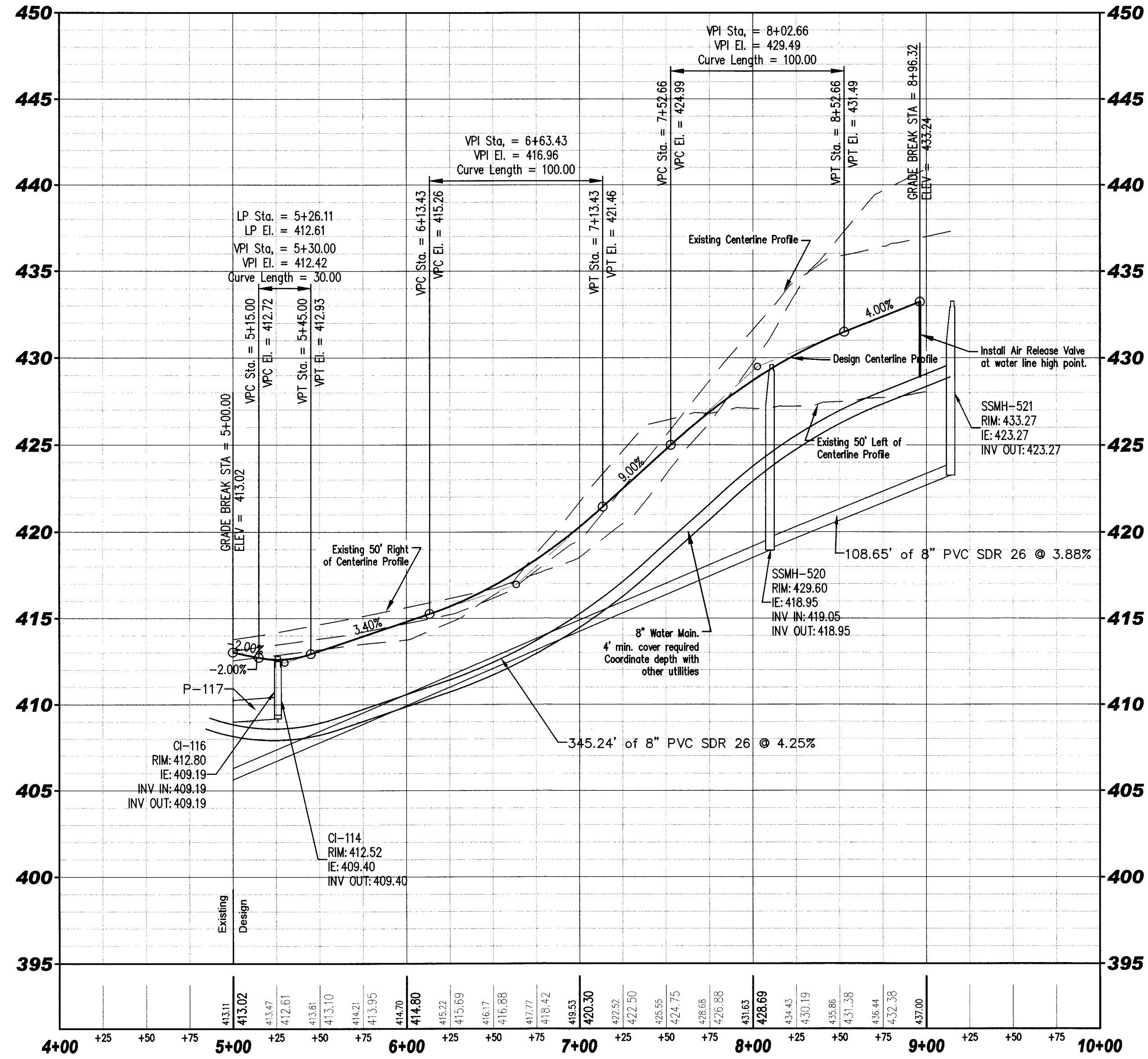
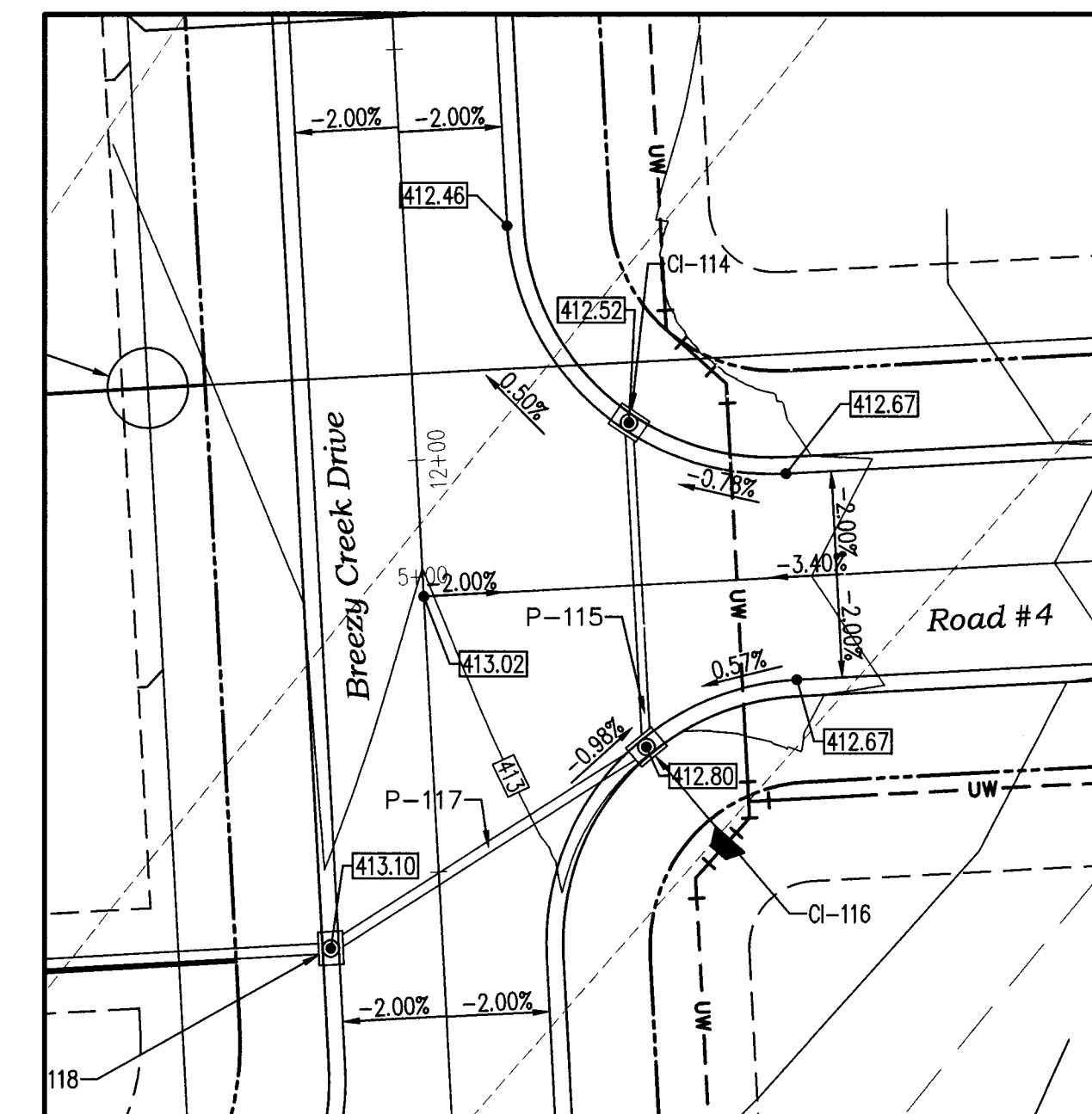


Road #4 Alignment Profile



Road #4 Cul-De-Sac Detail
Scale 1"=20'



Road #4 and Breezy Creek Drive Intersection Detail
Scale 1"=20'

Engineering
Surveying
Architecture
Construction Management

Morley and Associates, Inc.

4800 Rosebud Lane
Newburgh, IN 47630
(815) 464-9585
www.morleyassociates.com

All ideas, designs, calculations, and arrangements indicated or represented on these drawings are the property of Morley and Associates, Inc. and were created as instruments of service for use and in connection with the project. No part of these drawings shall be reproduced, stored in a retrieval system, or transmitted in any form or by any means, including electronic, mechanical, photocopying, recording, or by any information storage and retrieval system, without the prior written consent of Morley and Associates, Inc. The user of these drawings shall be deemed to have accepted the conditions on the job and Morley and Associates, Inc. must be notified of any errors or omissions on these drawings. The user shall be responsible for any differences and between electronic files and the signed and sealed hard copy drawings, the hard copy shall govern.

No.	By	Date	Description

JAMES E. MORLEY
REGISTERED
No. 10100250
STATE OF
INDIANA
PROFESSIONAL ENGINEER

Jan 2016
4-4-16

The Hills - Sterchi Homes Corporation

Road #4 Plan and Profile

Evansville, Indiana

APR 5 2016

Scale: H: 1" = 50', V: 1" = 5'

Designed By: JEM Job Number: 5553.4.007-B
Drawn By: ARK Date: 4/4/2016

File Name: J:\000\550-559\559\Cul 30\1\The Hills\553 The Hills Base ARK.dwg

Sheet Number:
C-107

RECEIVED BY THE
VANDERBURGH COUNTY
SURVEYOR'S OFFICE
4/5/16 CA