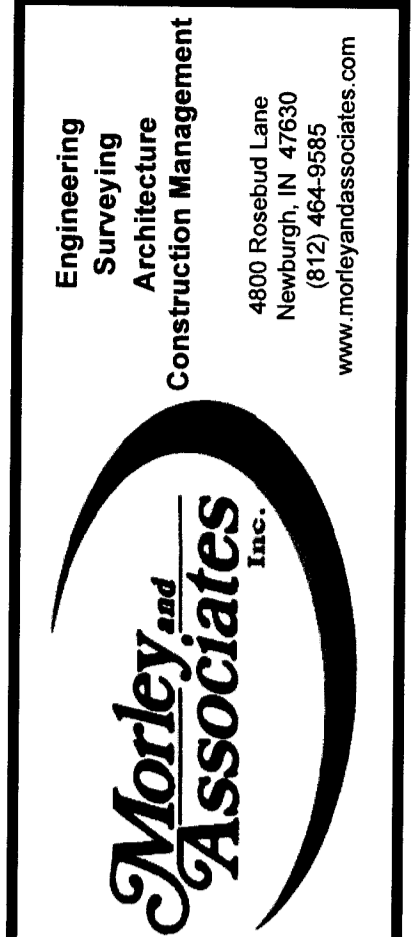


APPROVED
APR 05 2016

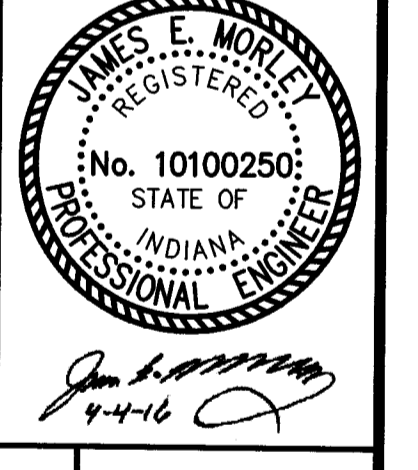
RECEIVED BY THE
VANDERBURGH COUNTY
SURVEYOR'S OFFICE
4/5/16 OA



Engineering
Surveying
Architecture
Construction Management

4800 Rosebud Lane
Newburgh, IN 47630
(812) 464-6885
www.morleyandassociates.com

No.	By	Date	Description



Project Client: The Hills - Sterchi Homes Corporation

Project Name: **Infrastructure Plan**
Western Half
Evansville, Indiana

Scale: 1" = 50'

Designed by: JEM Job Number: 5553.4.007-B

Drawn by: ARK Date: 4/4/2016

Filename: J:\5000\5500-5553\5553-CIV-3217.dwg
H:\0553 The Hills Base ARKS.dwg

Sheet Number: **C-101**