

Lot 10
 333626.0 Sq. Ft.
 7.66 Acres
 MFF = 386.00'

Lot 11
 734447.4 Sq. Ft.
 16.86 Acres
 MFF = 386.00'

Lot 2
 69217.3 Sq. Ft.
 1.59 Acres
 MFF = 386.00'

Lot 1
 196615.5 Sq. Ft.
 4.51 Acres
 MFF = 386.00'

Lot 12
 96599.9 Sq. Ft.
 2.22 Acres
 MFF = 386.00'

West side of Earthen Berm Drainage
 Grass Swale and west side Maintenance Path
 at 1% slope (Typical) with demising points as shown
 Draining toward Beehive Structures shown
 See typical Berm and Swale detail sheet 1.6

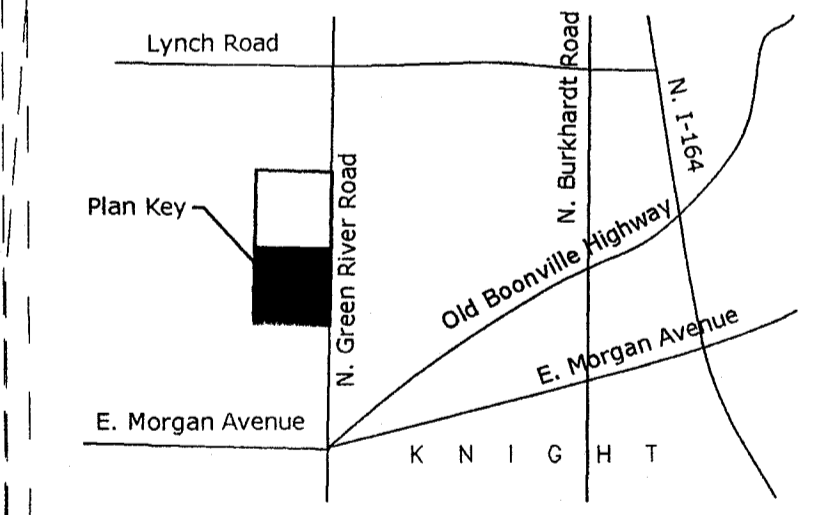
Install Flap Guard on Structure 4 at time of pipe
 installation and prior to allowing Detention Basin 1
 to accumulate storm runoff to prevent the risk of
 backflow into adjacent residential properties

New Stormwater Manhole
 with discharge to existing
 Structure 42 to the
 north-see note above.

Emergency Overflow Spillway
 w/ underdrain I.E. = 383.00' to
 382.0'-See sheet 1.6 for detail

LEGEND

---	EXISTING GRADE
---	PROPOSED GRADE
+	EXISTING SPOT GRADE
+	PROPOSED SPOT GRADE
H.P.	SPOT GRADE HIGH POINT
L.P.	SPOT GRADE LOW POINT
M.P.	MAINTENANCE PATH GRADE
F.L.	SWALE FLOW LINE GRADE



NOTE
 SEE SHEET 15 FOR ADDITIONAL NOTES
 AND SHEET 16 FOR DRAINAGE DETAILS.
 SEE ALSO SHEET 18 FOR EROSION CONTROL
 PLAN AS WELL AS 'CONSTRUCTION SITE
 STORMWATER RUNOFF CONTROL MANUAL'
 FOR 'MEASURE IMPLEMENTATION RELATIVE
 TO LAND DISTURBANCE' FOR SCHEDULING
 RELATIVE TO DRAINAGE WORK.

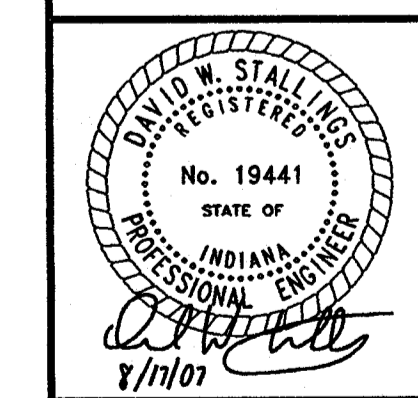
SOUTH DRAINAGE PLAN
 1" = 50'

THIS DRAWING IS THE ENTIRETY OF THE
 EXPLICIT PROPERTY OF LANDMARK DESIGN
 AND ENGINEERING, INC. ANY REPRODUCTION
 WITHOUT EXPRESS WRITTEN CONSENT
 OF AN AUTHORIZED REPRESENTATIVE OF
 LANDMARK DESIGN & ENGINEERING, INC.
 ANY DEVIATION IN WORD OR OMISSION
 FROM LATEST CODE REQUIREMENTS IS NOT
 INTENTIONAL AND SHALL NOT AFFECT
 CONTRACTOR'S RESPONSIBILITY TO UPHOLD
 ALL REQUIREMENTS. THIS PLAN IS NOT
 A PART OF ANY CONTRACT UNLESS SPECI-
 FICALLY NOTED IN SAID CONTRACT.

REVISIONS

NO.	DESCRIPTION

SOUTH DRAINAGE PLAN
STONEFIELD CROSSING SUBDIVISION
 2800 N. GREEN RIVER ROAD
 EVANSVILLE, INDIANA



DRAWN BY: DET DATE: 8-17-07
 DRAWING NUMBER:

1.5S

LANDMARK
 DESIGN & ENGINEERING, INC.
 P.O. Box 8124
 EVANSVILLE, INDIANA 47716
 PHONE: 812-473-6800

Find VCS Disk in Box
 SE Cor. SE/4, NE/4
 Sec. 14, T6S, R10W