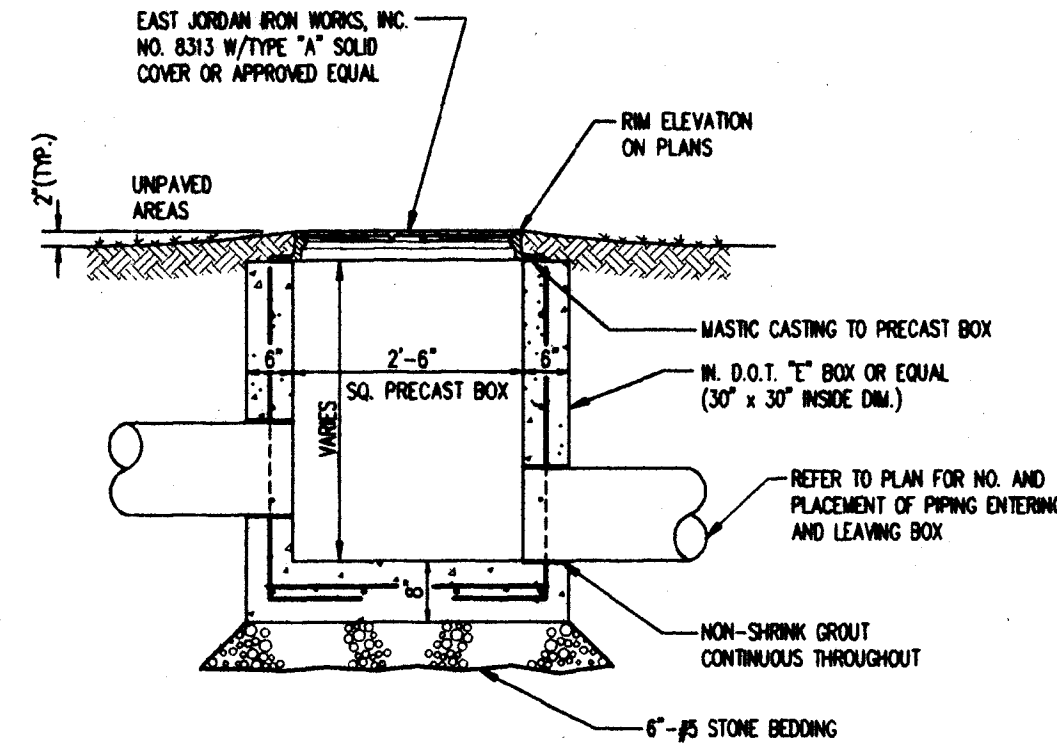
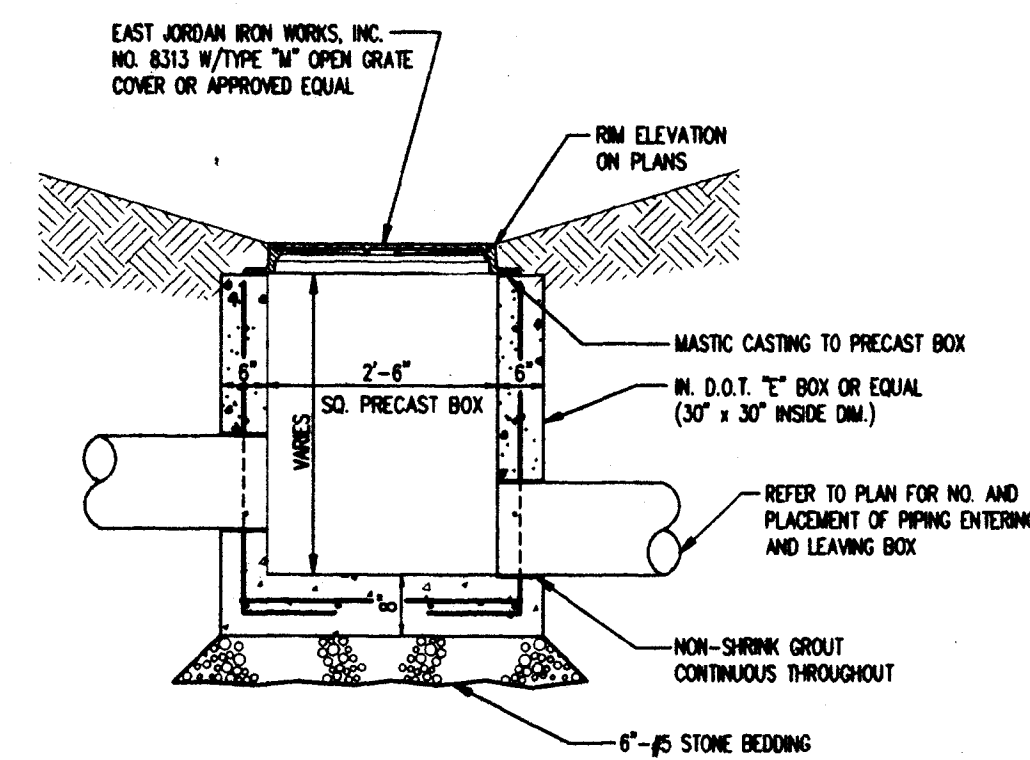


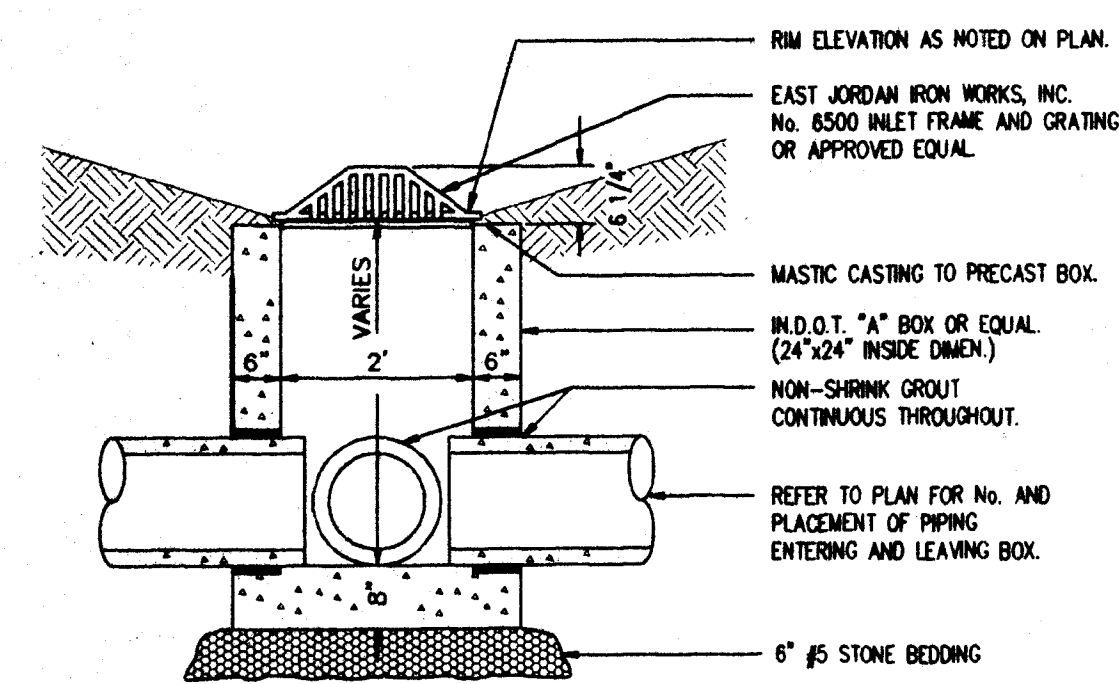
MANHOLE DETAIL
TYPE "A" SCALE: N.T.S.



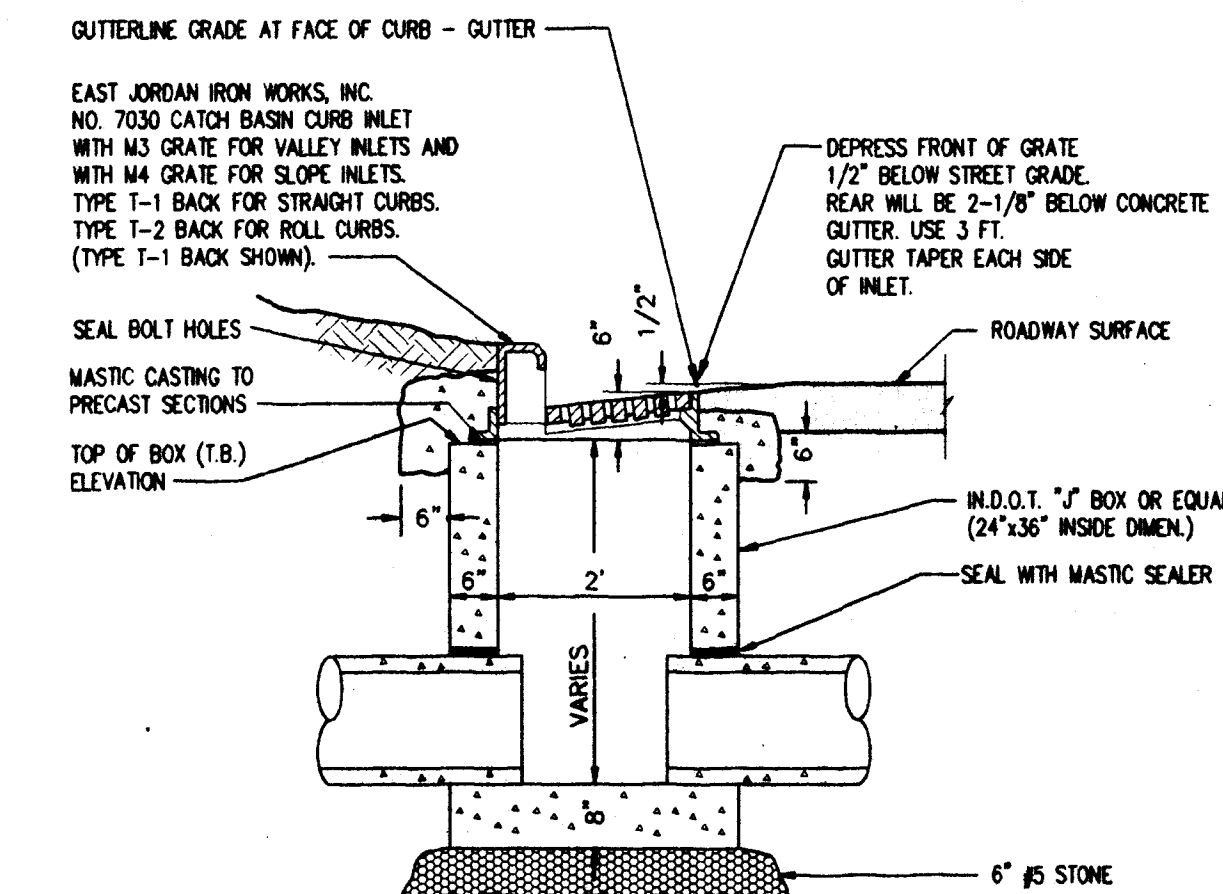
MANHOLE DETAIL
TYPE "E" SCALE: N.T.S.



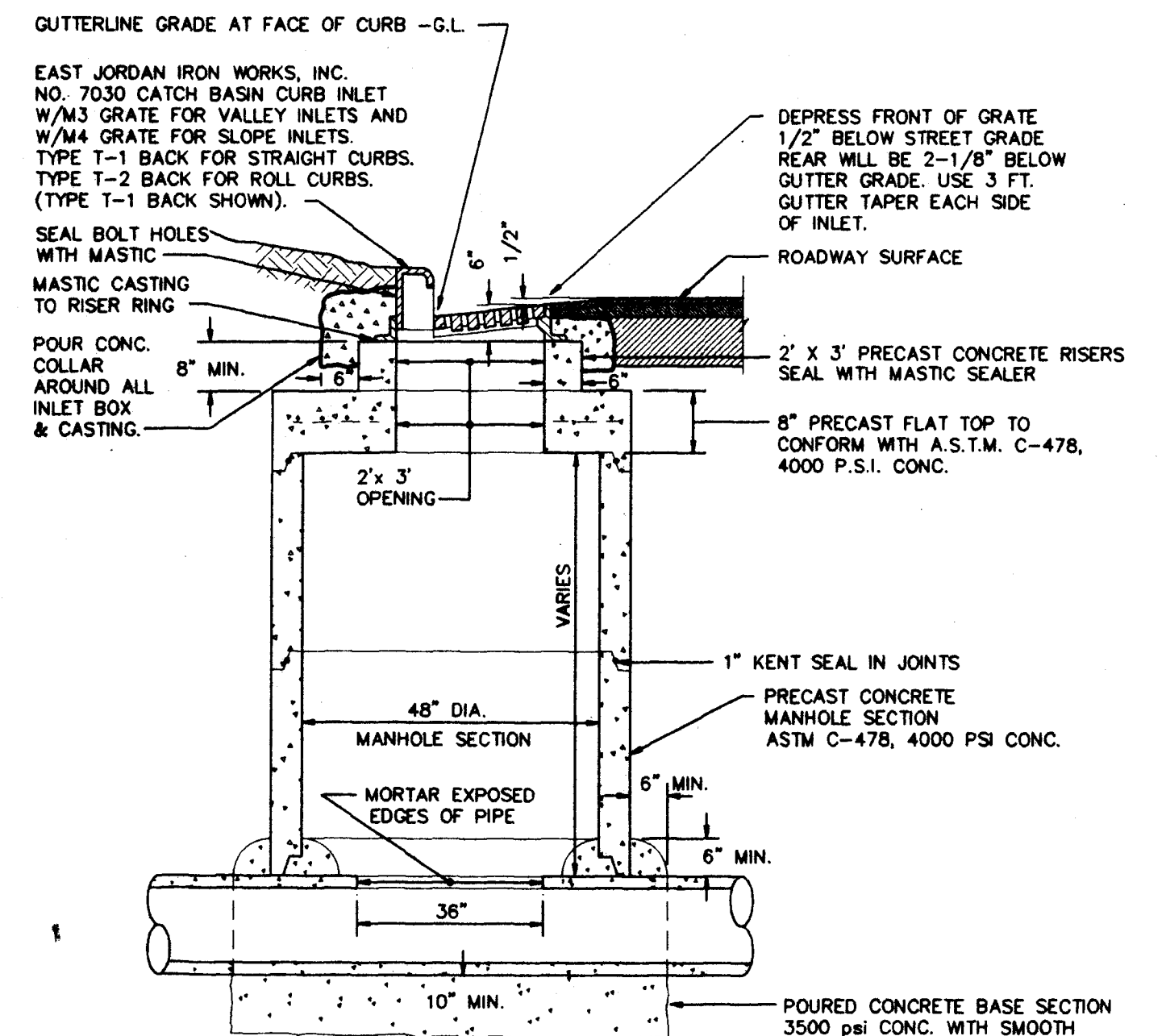
AREA INLET DETAIL
TYPE "E" SCALE: N.T.S.



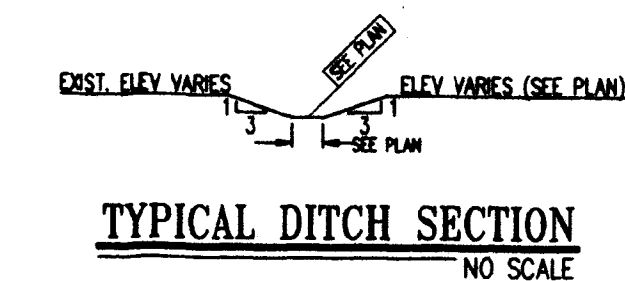
AREA INLET DETAIL
TYPE "A" SCALE: N.T.S.



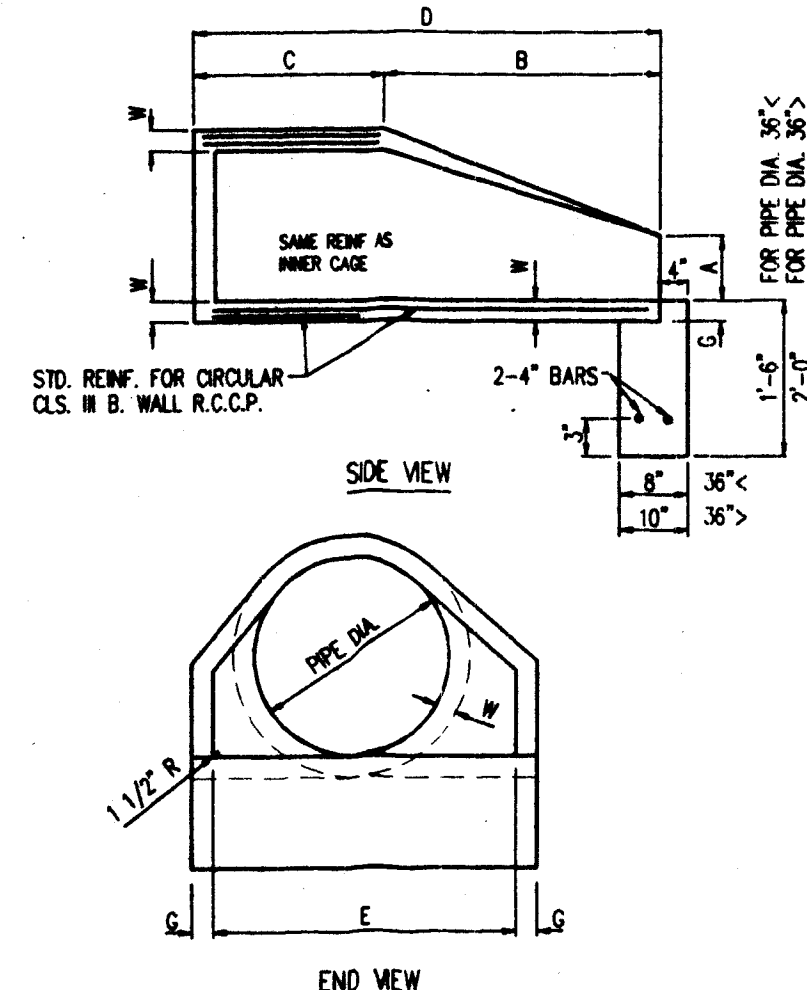
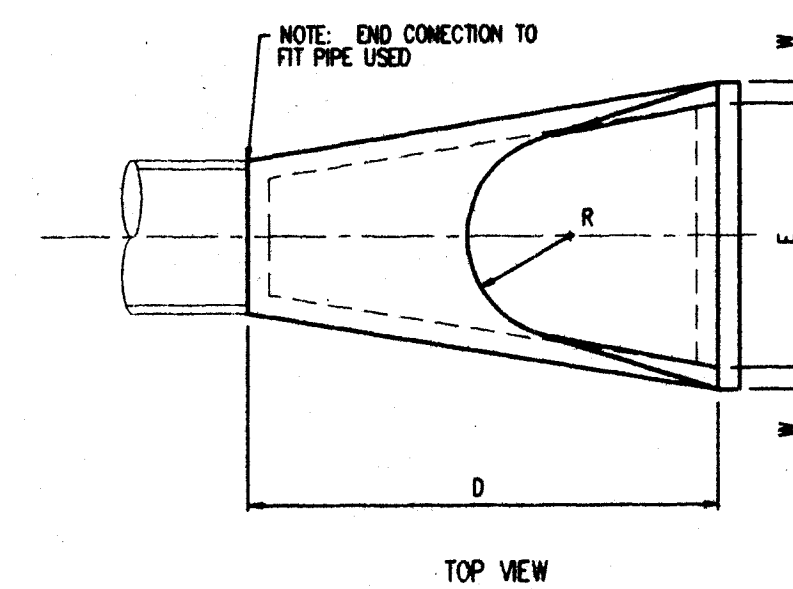
CURB INLET DETAIL
TYPE "J" SCALE: N.T.S.



COMBINATION MANHOLE AND CURB INLET DETAIL
TYPE "48" SCALE: N.T.S.



TYPICAL DITCH SECTION
NO SCALE



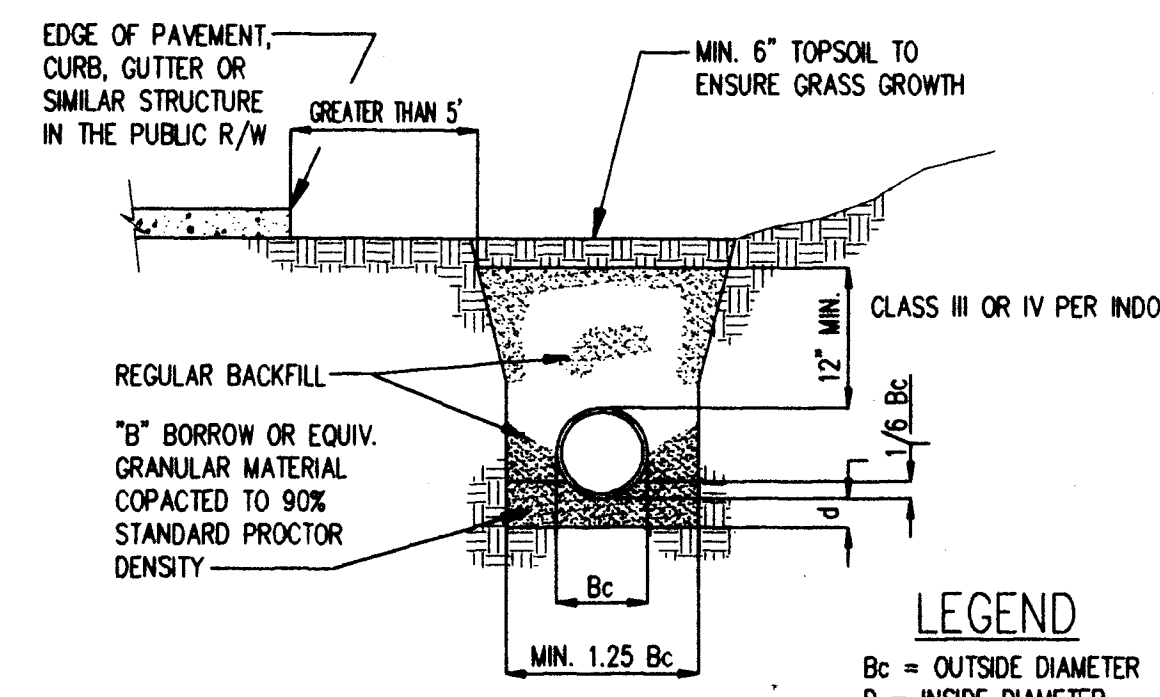
PIPE DIA.	WGT. (LBS)	WALL	A	B	C	D	E	G	R	SLOPE
12"	430	2"	5"	2'-0"	4'-1/8"	6'-0 7/8"	2'-0"	2"	9"	2:1
15"	740	2 1/4"	6"	2'-3"	3'-10"	6'-1"	2'-4"	2 1/4"	11"	2:1
18"	960	2 1/2"	10"	2'-3"	3'-10"	6'-1"	3'-0"	2 1/2"	12"	2:1
21"	1280	2 3/4"	10"	2'-11"	3'-2"	6'-1"	3'-8"	2 3/4"	13"	2:1
24"	1520	3"	10"	3'-7 1/2"	2'-8"	6'-1 1/2"	4'-0"	3"	14"	2:1
27"	1830	3 1/2"	10 1/2"	4'-2"	2'-1 1/2"	6'-1 1/2"	4'-8"	3 1/4"	14 1/2"	3:1
30"	2160	3 1/2"	1'-0"	4'-8"	1'-7 3/4"	6'-3 3/4"	5'-0"	3 1/2"	15"	3:1
33"	3200	3 3/4"	1'-1 1/2"	4'-10 1/2"	3'-3 1/4"	6'-1 3/4"	5'-8"	3 3/4"	17 1/2"	3:1
36"	4100	4"	1'-3"	5'-3"	2'-10 3/4"	6'-1 3/4"	6'-0"	4"	20"	3:1
42"	5360	4 1/2"	1'-9"	5'-5"	2'-11"	6'-2"	6'-8"	4 1/2"	22"	3:1
48"	6560	5"	2'-0"	6'-0"	2'-2"	6'-2"	7'-0"	5"	22"	3:1
54"	8240	5 1/2"	2'-3"	6'-0"	2'-11"	6'-4"	7'-4"	5 1/2"	24"	2:1
60"	8730	6"	2'-11"	5'-0"	3'-3"	6'-3"	8'-0"	5"	24"	2:1
66"	10710	6 1/2"	2'-8"	6'-0"	2'-3"	6'-3"	8'-8"	5 1/2"	24"	2:1
72"	12520	7"	3'-0"	6'-8"	1'-9"	6'-3"	9'-0"	6"	24"	1.88:1
78"	14770	7 1/2"	3'-0"	7'-8"	1'-9"	6'-3"	9'-8"	6 1/2"	24"	1.88:1
84"	18160	8"	3'-0"	7'-8 1/2"	1'-9"	9'-3 1/2"	10'-0"	6 1/2"	24"	1.5:1

CONCRETE END SECTION DETAIL
NO SCALE

STORM STRUCTURE TABLE

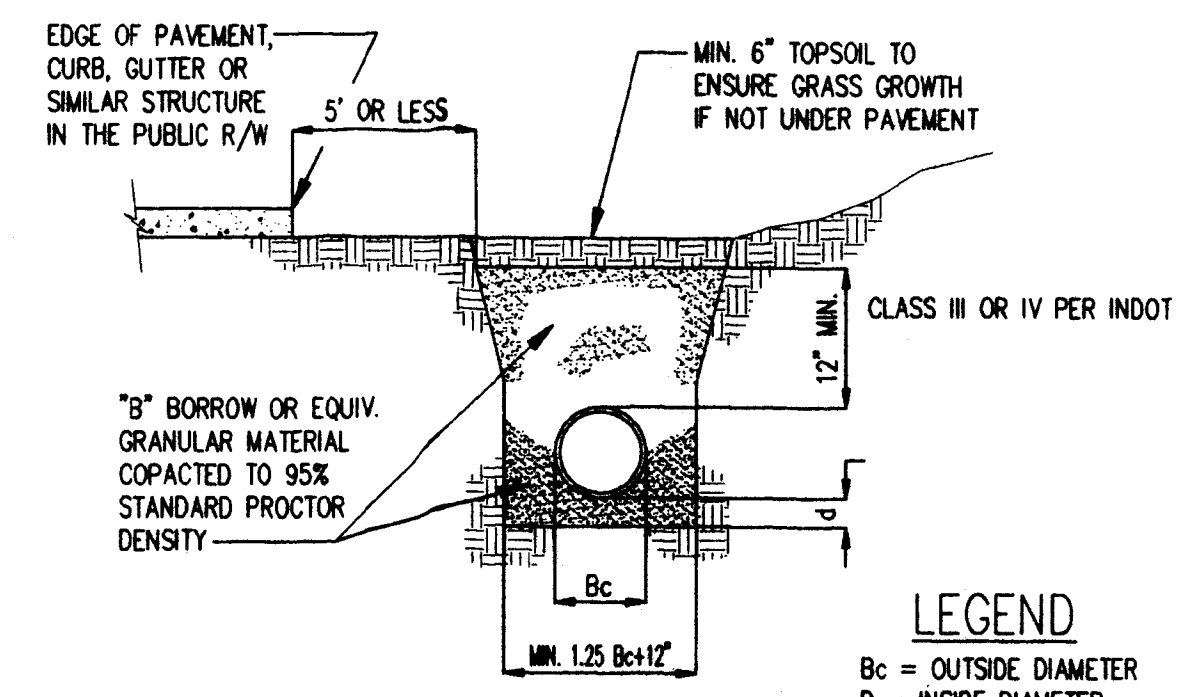
DESIGNATION	STRUCTURE TYPE	CASTING	COVER/GRATE
600	12" CONC. END SECTION	----	----
602	C.I.-TYPE "J"	E.J. 7030	M4
603	C.I.-TYPE "J"	E.J. 7030	M4
604	A.I.-TYPE "A"	E.J. 6500	GRATE
605	12" CONC. END SECTION	----	----
606	C.I.-TYPE "J"	E.J. 7030	M4
607	C.I.-TYPE "J"	E.J. 7030	M4
608	A.I.-TYPE "A"	E.J. 6500	GRATE
609	15" CONC. END SECTION	----	----
611	C.I.-TYPE "J"	E.J. 7030	M3
612	C.I.-TYPE "J"	E.J. 7030	M3
613	A.I.-TYPE "A"	E.J. 8313	GRATE
614	C.I.-TYPE "J"	E.J. 7030	M4
615	C.I.-TYPE "J"	E.J. 7030	M4
618	C.I.-TYPE "J"	E.J. 7030	M4
619	C.I.-TYPE "J"	E.J. 7030	M4
620	15" CONC. END SECTION	----	----
621	21" CONC. END SECTION	----	----
622	M.H.-TYPE "E"	E.J. 8313	GRATE
623	12" CONC. END SECTION	----	----
624	12" CONC. END SECTION	----	----
625	C.I.-TYPE "J" (DOUBLE)	E.J. 7030	M3
626	C.I.-TYPE "J" (DOUBLE)	E.J. 7030	M3
627	24" CONC. END SECTION	----	----

• 601,610,616,617 NOT USED



LEGEND
Bc = OUTSIDE DIAMETER
D = INSIDE DIAMETER
d = DEPTH OF BEDDING MATERIAL BELOW PIPE

PIPE BEDDING DETAIL
SCALE: N.T.S.



LEGEND
Bc = OUTSIDE DIAMETER
D = INSIDE DIAMETER
d = DEPTH OF BEDDING MATERIAL BELOW PIPE

PIPE BEDDING DETAIL
SCALE: N.T.S.

GENERAL NOTES

- THE FOLLOWING LOCAL GOVERNMENTAL AGENCY SHALL BE NOTIFIED 24 HOURS PRIOR TO BEGINNING WORK AND ON A DAILY BASIS WHEN PERFORMING THE WORK LISTED BELOW:
STORM SEWERS, STREET SUBGRADE, STREETS
TOWN OF DARMSTADT 812-867-1413
- GENERAL SITE**
WORK COVERS ALL EARTHWORK, SEWERS, PAVING AND OTHER RELATED WORK FOR THE DEVELOPMENT OF "SHADOW BLUFF ESTATES"
- THE CONTRACTOR SHALL COMPLY WITH ALL LOCAL, STATE AND FEDERAL CODES, ORDINANCES, RULES, REGULATIONS, ORDERS AND OTHER LEGAL REQUIREMENTS OF MUNICIPAL AUTHORITIES WHICH BEAR ON THE PERFORMANCE OF THE WORK.
- ALL FIELD ENGINEERING SHALL BE SUPPLIED BY THE OWNER.
- EXCAVATING**
ROADWAY SUBGRADE COMPACTION TESTS SHALL BE PERFORMED AT CONTRACTORS EXPENSE.
- SUFFICIENT SOIL SAMPLES ARE TO BE TAKEN BY THE CONTRACTOR FROM THE ROADWAY SUBGRADE AFTER THE TOPSOIL IS REMOVED OR FROM BORROW AREAS IN ORDER TO OBTAIN ACCURATE PROCTOR VALUES FOR SUBSEQUENT SUBGRADE DENSITY TESTING.
- SUBGRADE IS TO BE COMPACTED IN ACCORDANCE WITH VANDERBURGH COUNTY STANDARDS.
- SUBGRADE DENSITY IS TO BE TESTED AT A MINIMUM OF ONE TEST PER SECTION OF ROADWAY CONNECTED BY AN INTERSECTION. OTHERS MAY BE REQUESTED AT THE DISCRETION OF THE INSPECTOR OR ENGINEER.
- DRAWINGS DO NOT REPRESENT A BALANCE BETWEEN BORROW AND FILL MATERIAL.
- STORM SEWERS**
STORM DRAINAGE SYSTEM TO BE IN TEMPORARY SERVICE FOR SITE DRAINAGE DURING CONSTRUCTION AND MUST BE CLEANED BEFORE CONSIDERATION FOR MAINTENANCE ACCEPTANCE.
- PRODUCT CERTIFICATIONS OR REPORTS ARE TO BE OBTAINED BY THE CONTRACTOR FROM THE CONCRETE SUPPLIER AND MADE AVAILABLE TO THE VANDERBURGH COUNTY ENGINEER INSPECTOR OR OFFICE.
- ALL STORM SEWERS SHALL BE CONSTRUCTED IN ACCORDANCE WITH ASTM C 76-79.
- STORM SEWER PIPE SHALL CONFORM TO RCP CLASS III WITH O-RING RUBBER GASKET JOINTS. RUBBER GASKETS SHALL CONFORM TO ASTM C 473-79.
- ALL LENGTHS OF RCP STORM SEWER TERMINATING OR BEGINNING WITH CONCRETE END SECTIONS REFER TO THE DISTANCE FROM THE CENTERLINE OF STRUCTURE TO THE FLOWLINE OF THE CONCRETE END SECTION.

SITECON, Inc.
Engineers-Surveyors
600 S.E. Eighth Street Suite 2
Evansville, Indiana 47713
(812) 423-2320

Project: SHADOW BLUFF ESTATES

Sheet Title: STORM DETAIL SHEET

Revisions	Description	Date	By

Professional Engineer Seal: Keith J. Poff, Registered Professional Engineer, State of Indiana, No. 19400320, 5-13-96

Scale: AS NOTED
Designed By: KJP
Drawn By: JOW
Checked By: JOW
Job Number: 109-96-1-2
Date: 5-13-96
Filename: STORDET.DWG