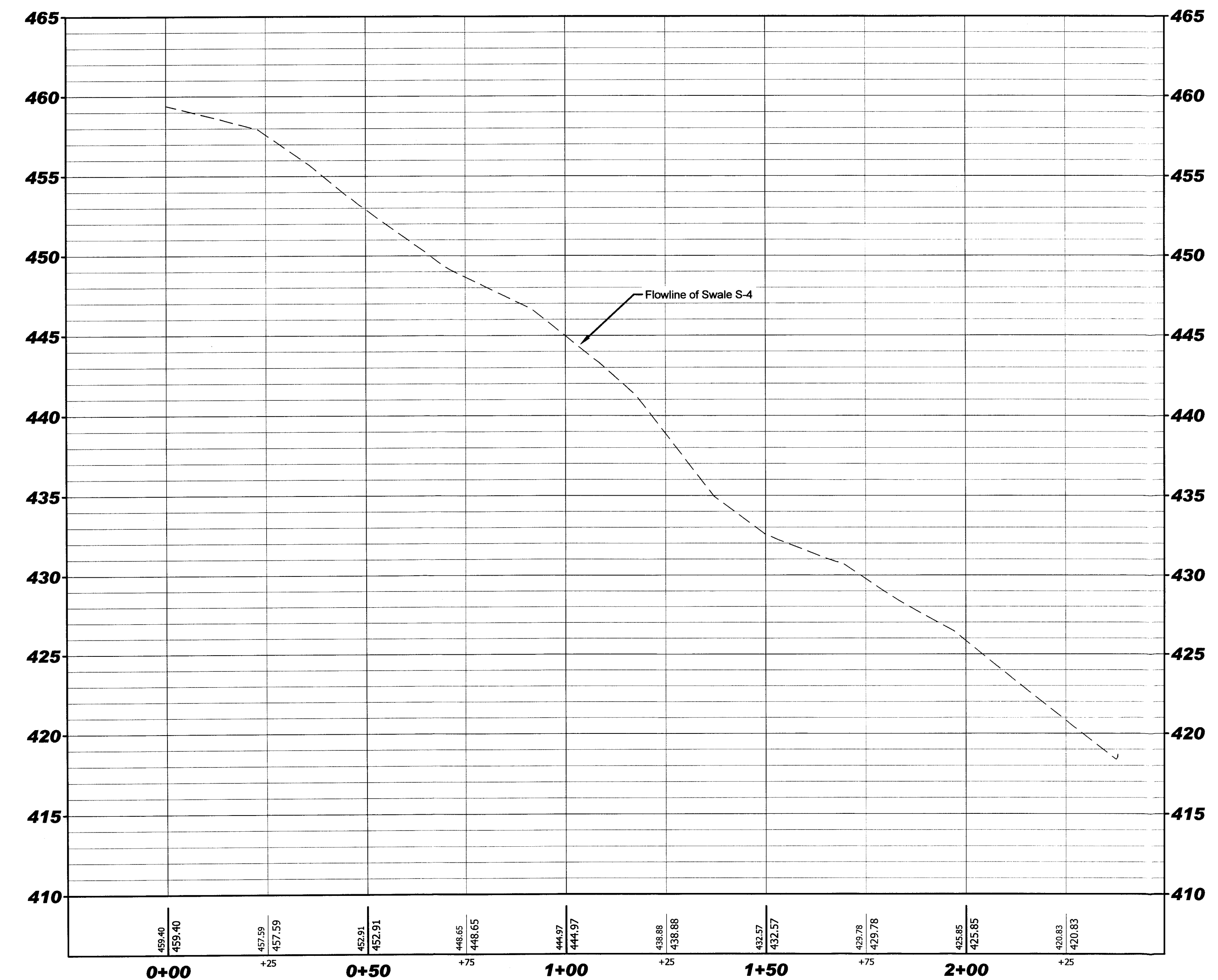
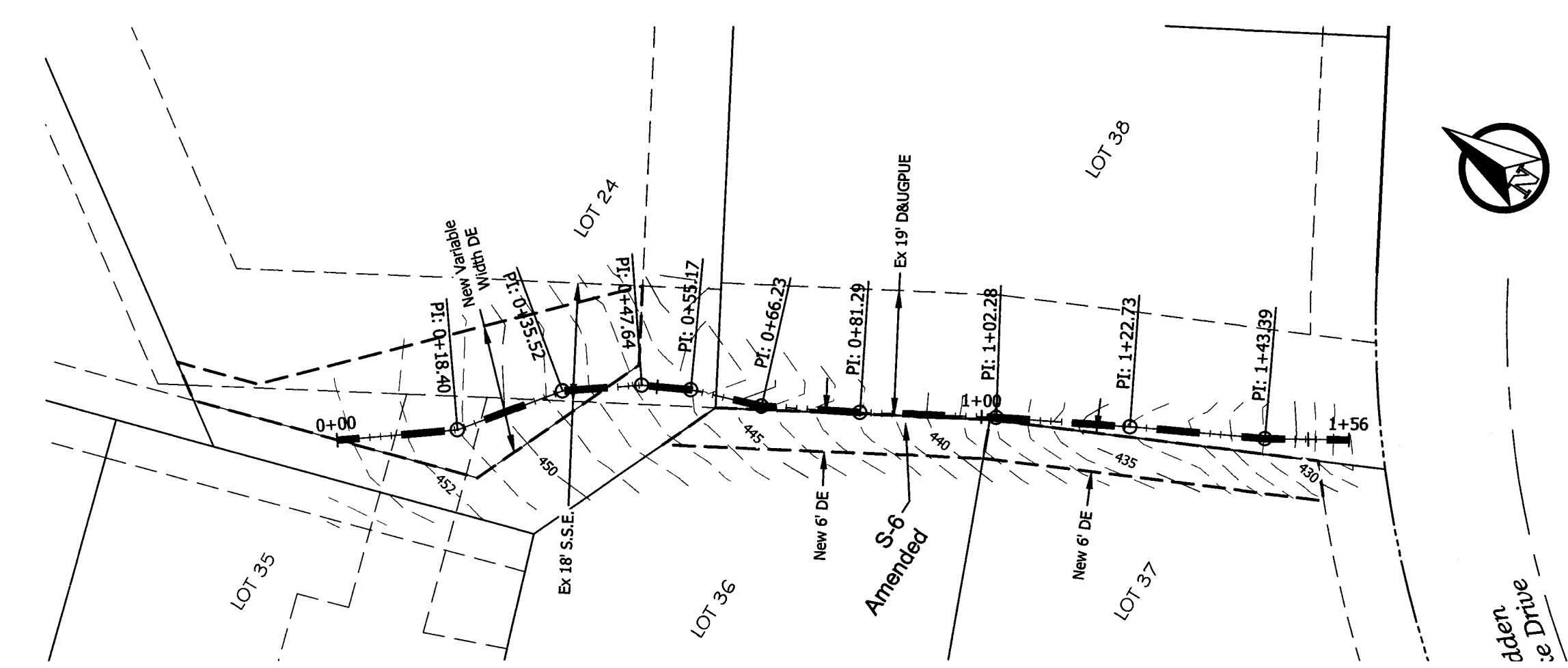
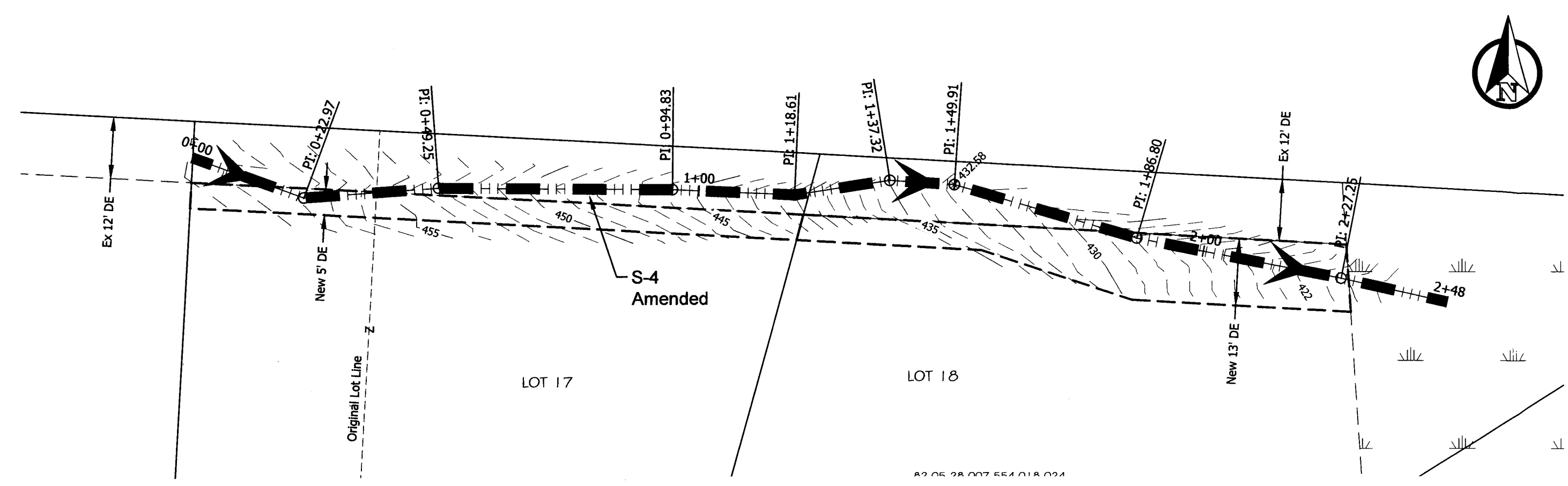


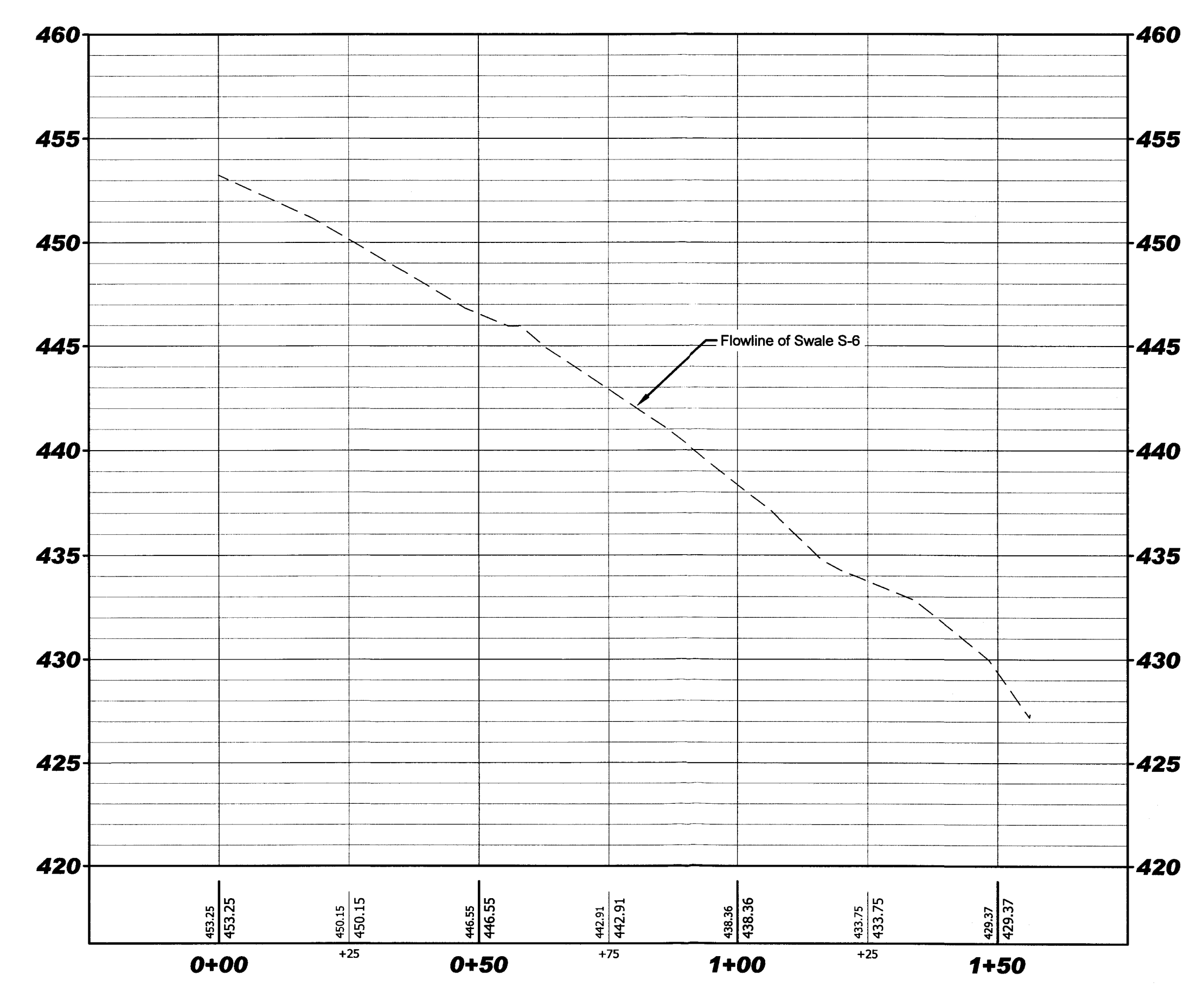
All ideas, designs, calculations, and arrangements indicated or represented by this drawing are owned by and are the property of Morley and Associates, Inc. and were created as instruments of service for use on and in connection with the specified project. Morley and Associates retains all common law, statutory law and other rights, including copyrights. No drawings or electronic files shall be reused for any purpose other than the project. They shall not be disclosed to or be used by any other person or firm without the written consent of Morley and Associates, Inc.

Written dimensions on these drawings shall have precedence over scale dimensions. Contractors shall verify and be responsible for all dimensions and conditions on the job and Morley and Associates, Inc. must be notified of any variations from the dimensions and conditions shown by these drawings. If differences exist between electronic files and the signed and sealed hard copy drawings, the hard copy shall govern.

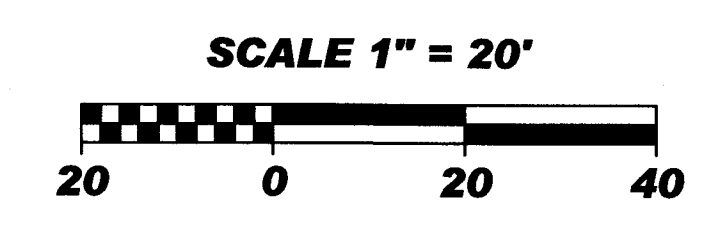
4800 Rosebud Ln., Newburgh, IN 47630  
 812.464.9585 Phone 812.464.2514 Fax  
 morleycorp.com



**SWALE, S-4**



**SWALE, S-6**



RECEIVED BY THE  
 VANDERBURGH COUNTY  
 SURVEYORS OFFICE  
 11-8-19

The Reserve at Hidden Lake  
 First National Bank of Carmi

APPROVED  
 NOV 12 2019  
 VANDERBURGH COUNTY  
**Swales S-4  
 and S-6**  
 Plan and Profile

No.	By	Date
<b>Revisions</b>		
Scale: 1" = 20' H; 1" = 5' V		
Designed By:	MTC	Job Number: 8716.4.001-B
Drawn By:	MTC	Date: 11/8/2019
Filename:	8716 Swale 4 & 6 Profile	
Sheet Number:	<b>C-107</b>	