

Nevayah Place

Evansville, IN
June 2019

Nevayah Place - 10390.4.001-B

General Notes:

1. Contractor shall comply with all local, state and federal codes, ordinances, rules, regulations, orders and other legal requirements of municipal authorities which bear on the performance of the work.
2. The contractor is cautioned that the location and/or elevation of existing utilities as shown on these plans is based on records of various utility companies, and where possible measurements taken in the field. The information is not to be relied on as being exact or complete. The contractor must contact the appropriate utility company at least 48 hours before any excavation to request exact field location of utilities.
Indiana Underground Utility Locate Service
Phone: 811
3. Material specifications shall be in conformance with applicable portions of the INDOT standard specifications, (latest edition) unless specifically stated otherwise on these plans, contract documents or local code.

Resource Contacts

Evansville, Vanderburgh County, Indiana

Vectren Energy Delivery - electric
Jody Chapman (jwachman@vectren.com)
Electric Distribution Engineer
1 North Main Street, Evansville, IN 47708
812-491-4707

Vectren Energy Delivery - gas
Matt Stewart (mstewart@vectren.com)
Gas Distribution Engineer
1 North Main Street, Evansville, IN 47708
812-491-5773

AT&T
Marc Clark (mc3429@att.com)
Engineering Department
134 NW Sixth Street, Evansville, IN 47708
812-464-6041

Evansville Water and Sewer Utility
Doug Ohning (djonhning@ewsu.com)
Manager of Planning and Development
PO Box 19, Evansville, IN 47740
812-421-2120, EXT. 2217

Spectrum
Daryl Hulsey (daryl.hulsey@twcable.com)
Construction Coordinator
1900 N Fares Avenue, Evansville, IN 47711
812-253-2755 Office
812-305-8348 Cell

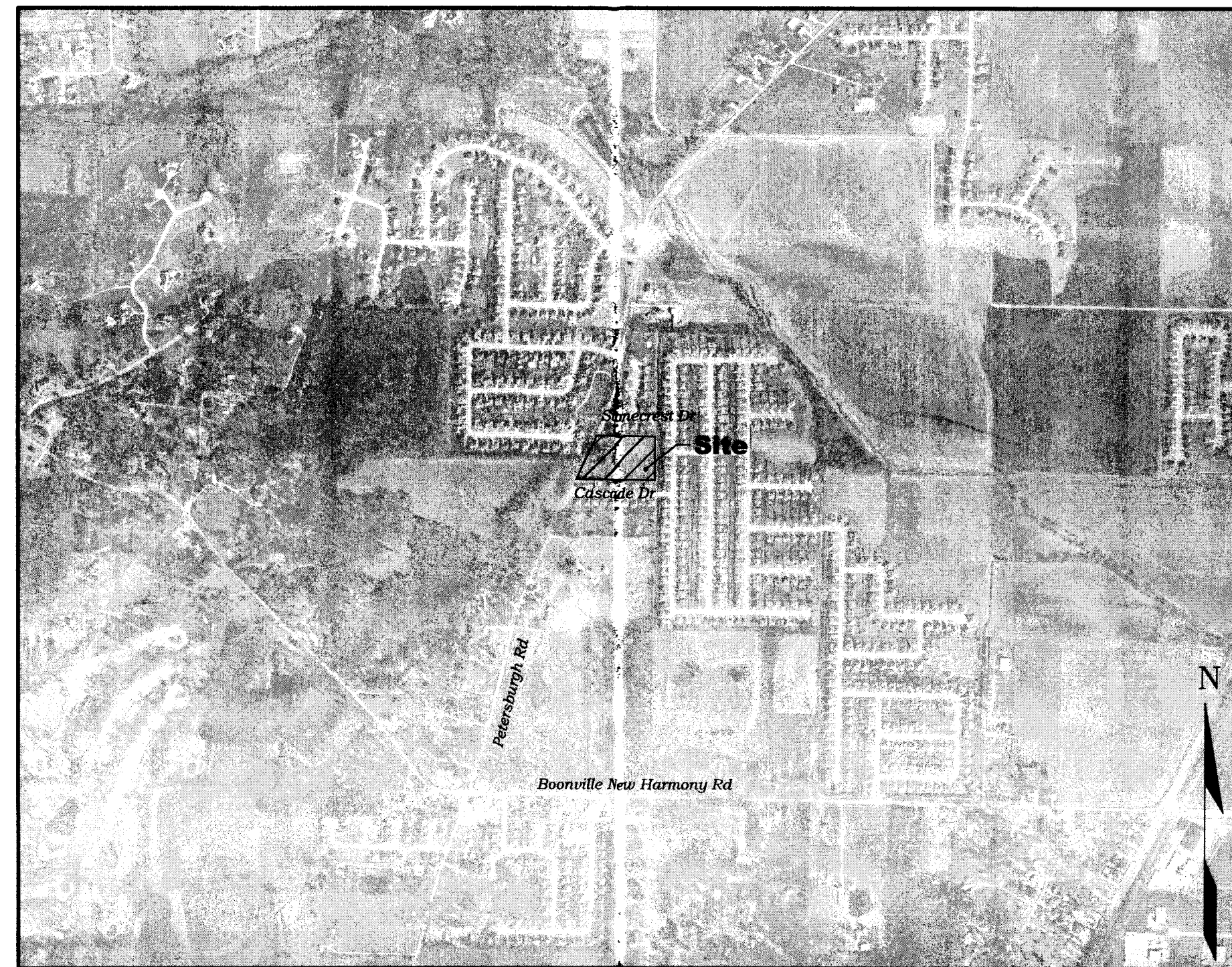
WOW
Courtney Stevens
(courtney.stevens@wowinc.com)
6600 Hank Avenue, Evansville, IN 47715
812-437-0395 Office

Drainage or Public Land issues in the County
Jeff Mueller
(jmueller@vanderburghsurveyor.com)
Vanderburgh County Surveyor
Room 325, Civic Center Complex
1 NW Martin Luther King Jr Blvd, Evansville
IN 47708
812-435-5210

County Roads and Erosion issues in the County
John Stoll (jstoll@vanderburghgov.org)
Vanderburgh County Engineer
201 NW Fourth Street, Suite 306, Evansville,
IN 47708
812-435-5773

Scott Township Fire and EMS
Adam M. Farrar (afarrar@scottfire.org)
Fire Chief
1540 E Baseline Road, Evansville, IN 47725
812-435-8324 Office

CALL BEFORE YOU DIG-BURIED LINE
LOCATION
CALL 811



Site Location Map

Bench Mark Data

TBM #1: North rim of sanitary sewer manhole at southwest corner of Lot 273 in Stonecrest Section 3.
Elevation = 406.14 (NAVD 1988)

TBM #2: Chiseled square on concrete pad on southwest corner of Lot 273 in Stonecrest Section 2.
Elevation = 412.29 (NAVD 1988)

Sheet Index

G100	Title Sheet
G101	General Notes
Primary Plat	
C100	Infrastructure/Drainage Plan
C101	Utility Plan
C102	Road 1 & Sanitary Sewer Line A Plan and Profile
C103	SWP3 Plan
C500	Drainage Details
C501	Road Details
C502	SWP3 Details
EWSU Sanitary Sewer Details	
EWSU Potable Water Details	

Client

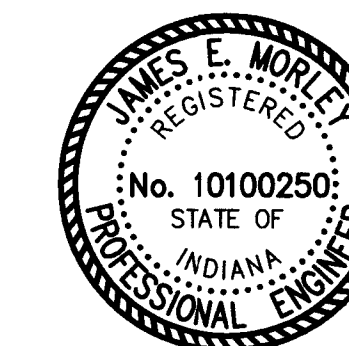
Anlene, LLC
Attn. Walid Fehme
2166 Eagle Wood Drive
Newburgh, IN 47630

Engineer and Surveyor

MORLEY
ARCHITECTS | ENGINEERS | SURVEYORS

Engineering + Surveying + Architecture
Construction Management

Newburgh, IN
(812) 464-9585
www.morleycorp.com



James E. Morley
6-14-19

RECORDED BY
VANDERBURGH
SURVEYORS
6-14-19
LA

G100