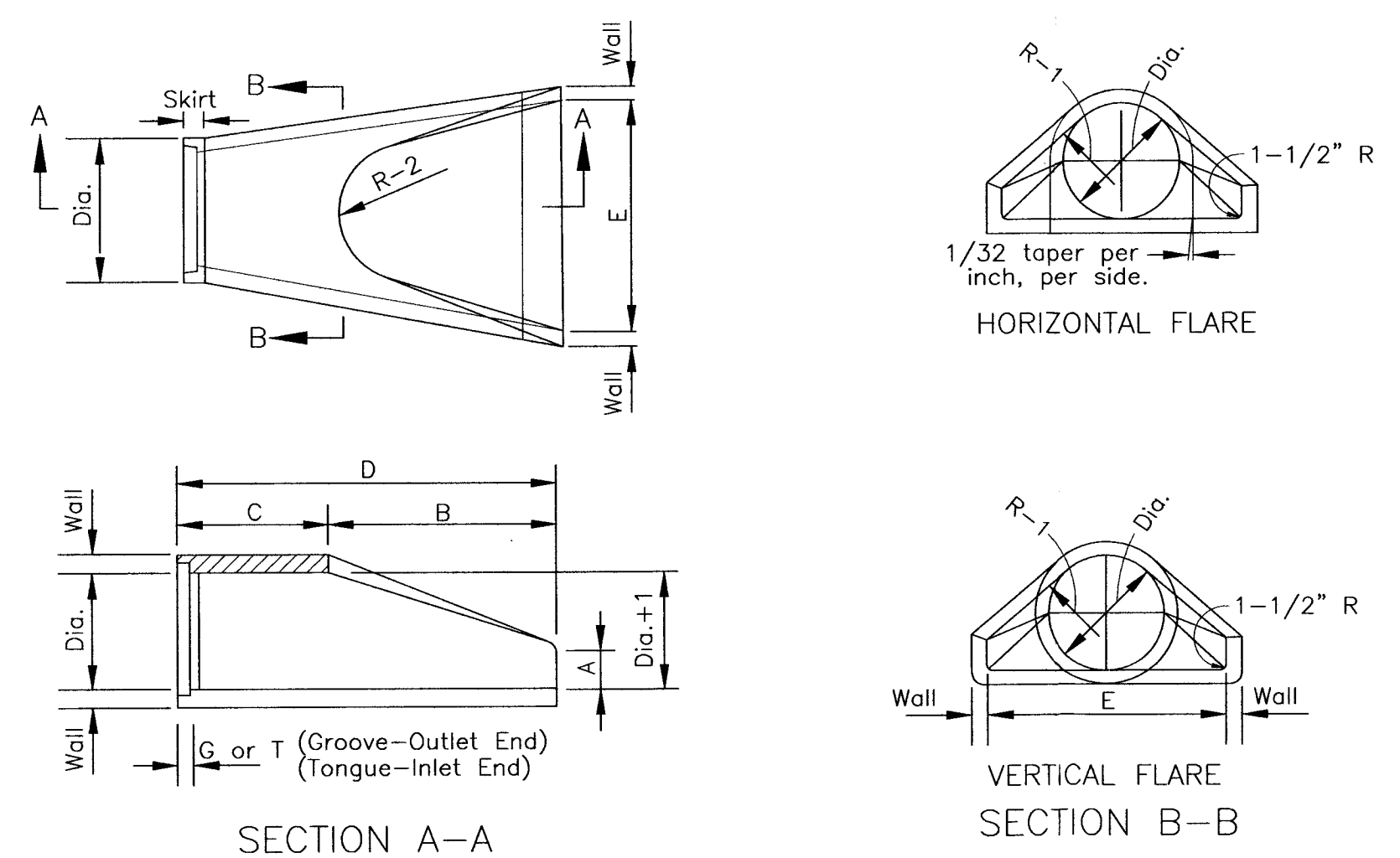


TRENCH WIDTH TABLE

PIPE #	MIN WIDTH
12"	2'-6"
15"	2'-9"
18"	3'-0"
24"	3'-6"
30"	4'-1 1/2"
36"	4'-9"
42"	5'-4 1/2"

NOTES:
1. New street surface shall comply with local authority jurisdiction.

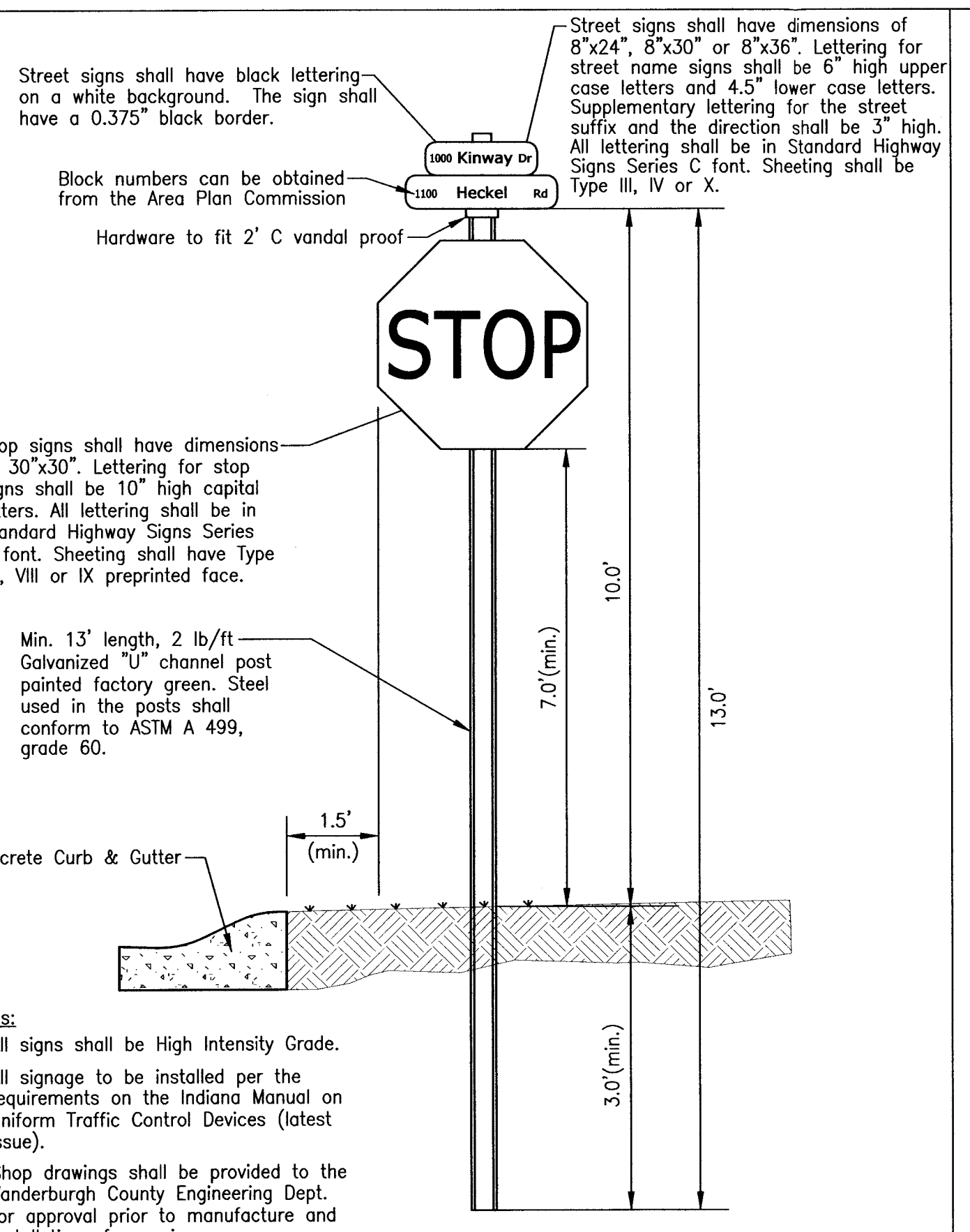
REINFORCED CONCRETE PIPE BEDDING
Scale: N.T.S.



DIA.	WALL	G or T	WT.	SEC.	A	B	C	D	E	DIA.+1	R-1	R-2	SKIRT
12	2	1 1/2	530	4	24	48	7/8	24	13	10 1/16	9	3	1/2
15	2 1/4	2	740	6	27	46	7/8	30	16	12 1/2	11	3	1/2
18	2 1/2	2 1/2	990	9	27	46	7/8	36	19	15 1/2	12	4	
21	2 3/4	2 1/4	1280	9	35	38	7/8	42	22	16 1/8	13	4	
24	3	2 1/2	1520	9 1/2	43 1/2	30	7/8	48	25	16 11/16	14	4 1/2	
27	3 1/4	2 1/2	1930	10 1/2	48	25 1/2	7/8	54	28	17 3/4	14 1/2	4 1/2	
30	3 1/2	3	2190	12	54	19 3/4	7/8	60	31	18 5/16	15	5	
33	3 3/4	3 3/8	3150	13 1/2	58 1/2	39 1/4	7/8	66	34	23 3/4	17 1/2	5 1/2	
36	4	3 1/2	4100	15	63	34 3/4	7/8	72	37	24 1/16	20	5 1/2	
42	4 1/2	3 3/4	5380	21	63	35	7/8	98	78	27 1/4	22	5 1/2	
48	5	4 1/4	6550	24	72	26	7/8	98	84	28 1/8	22	5 3/4	
54	5 1/2	4 3/4	8040	27	65	35	7/8	100	90	32 7/8	24	6 1/4	
60	6	5	8750	30	60	39	7/8	99	96	36 3/4	24	6 3/4	
66	6 1/2	5 1/2	10630	24	78	21	7/8	99	102	35 11/16	24	7 1/4	
72	7	6	12520	34	78	21	7/8	99	108	38 5/8	24	7 3/4	
78	7 1/2	6 1/2	14430	24	78	21	7/8	99	114	41 15/16	24	8 1/2	
84	8	7	16350	24	78	21	7/8	99	120	44 13/16	24	9	

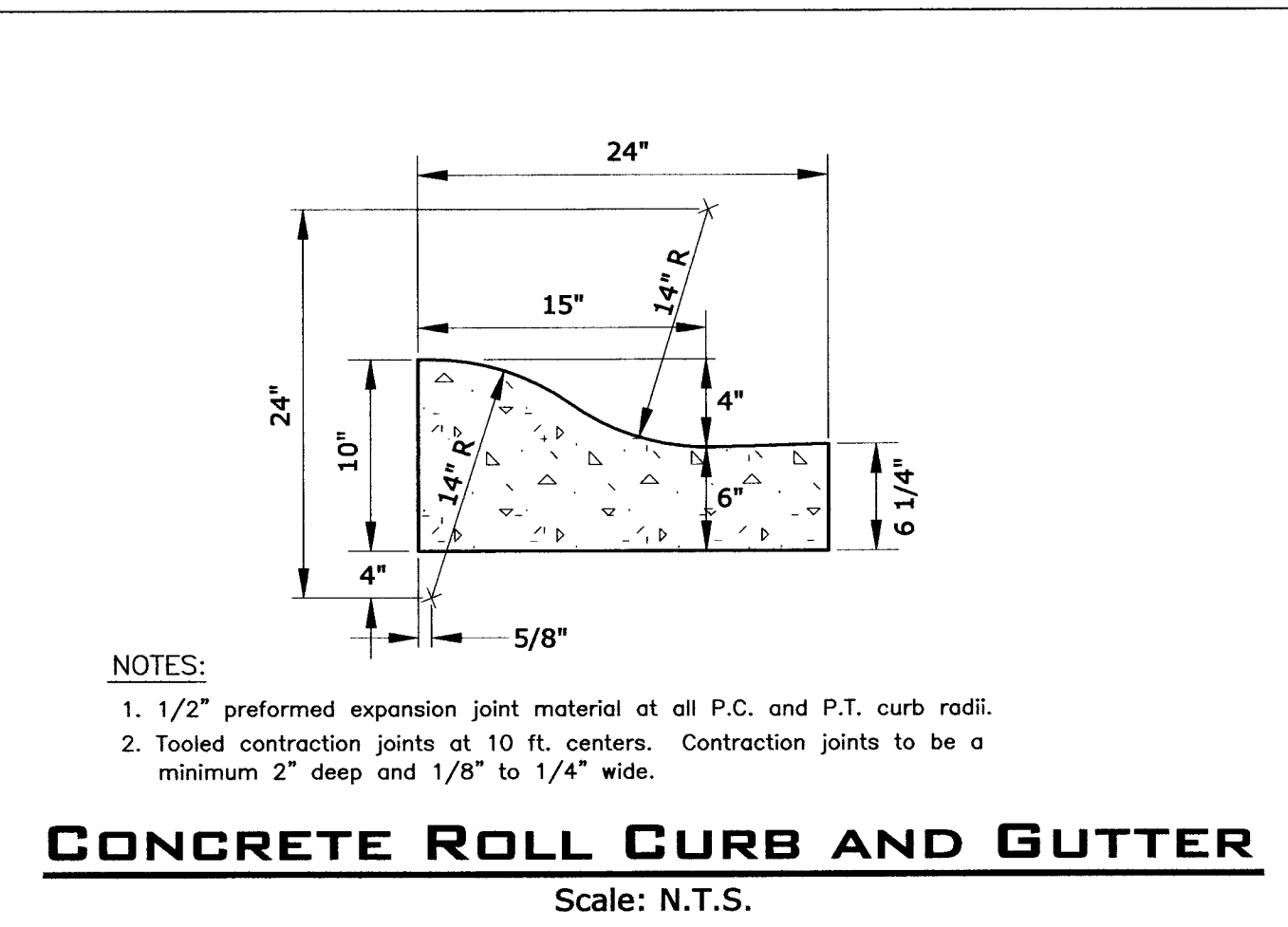
NOTE:
Manufacture of end section is in accordance with applicable portions of A.S.T.M. specification C76.

PRECAST CONCRETE END SECTION
Scale: N.T.S.



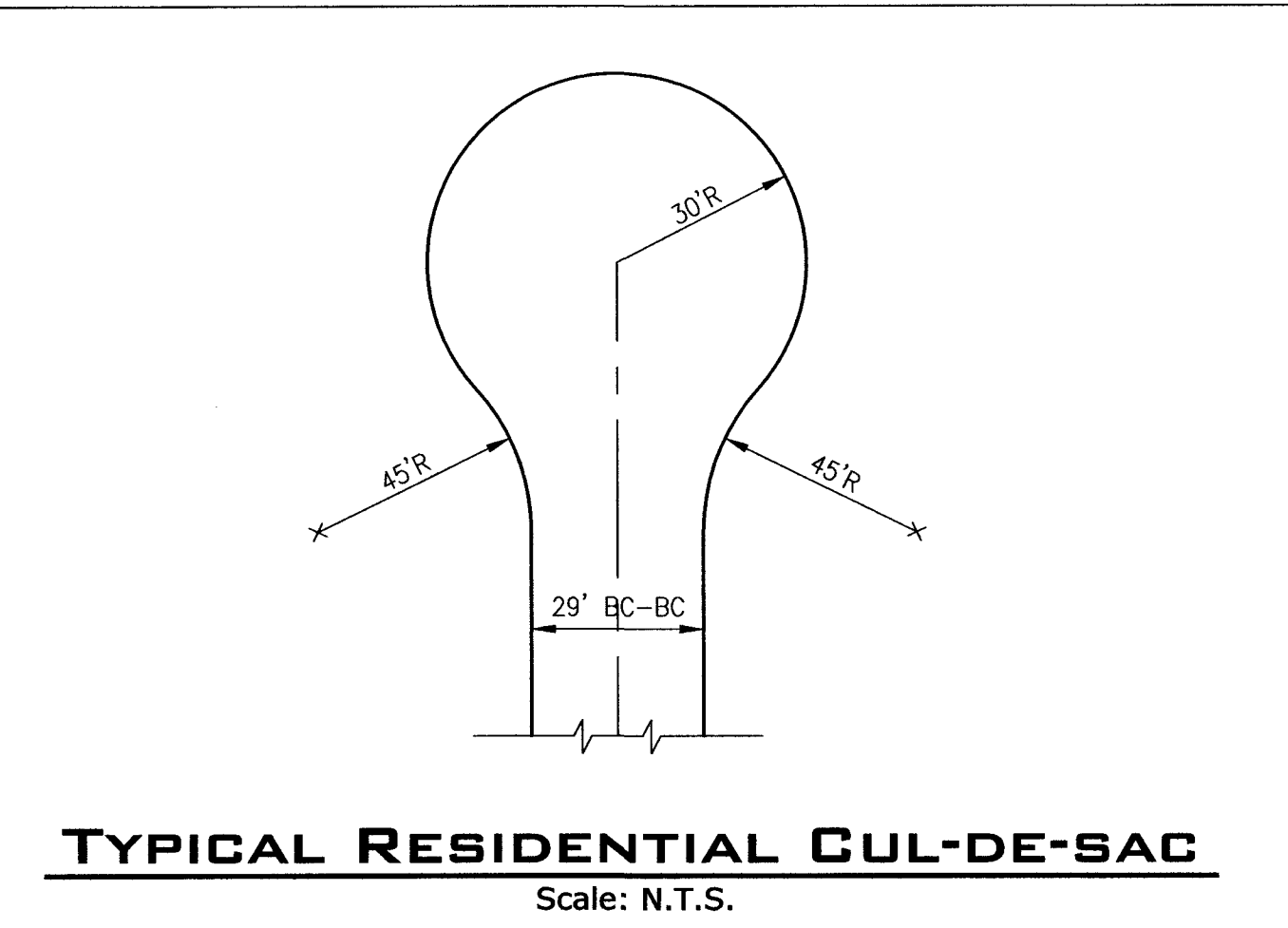
NOTES:
1. All signs shall be High Intensity Grade.
2. All signage to be installed per the requirements on the Indiana Manual on Uniform Traffic Control Devices (latest issue).
3. Shop drawings shall be provided to the Vanderburgh County Engineering Dept. for approval prior to manufacture and installation of any signs.

STREET SIGNS
Scale: N.T.S.

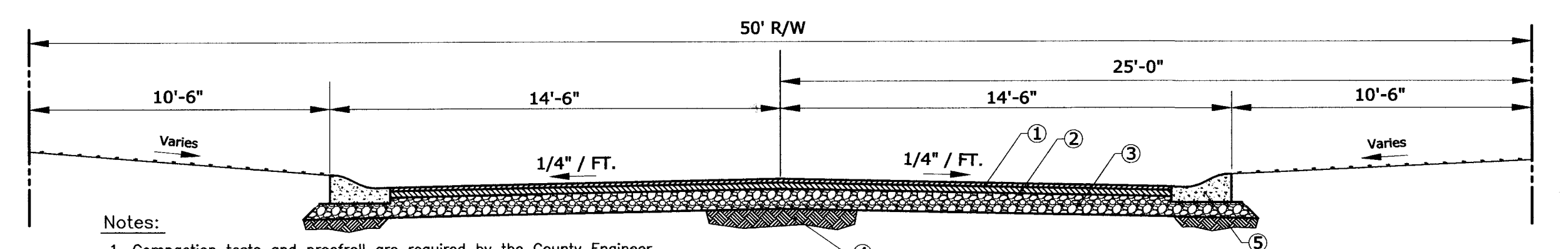


NOTES:
1. 1/2\"/>

CONCRETE ROLL CURB AND GUTTER
Scale: N.T.S.



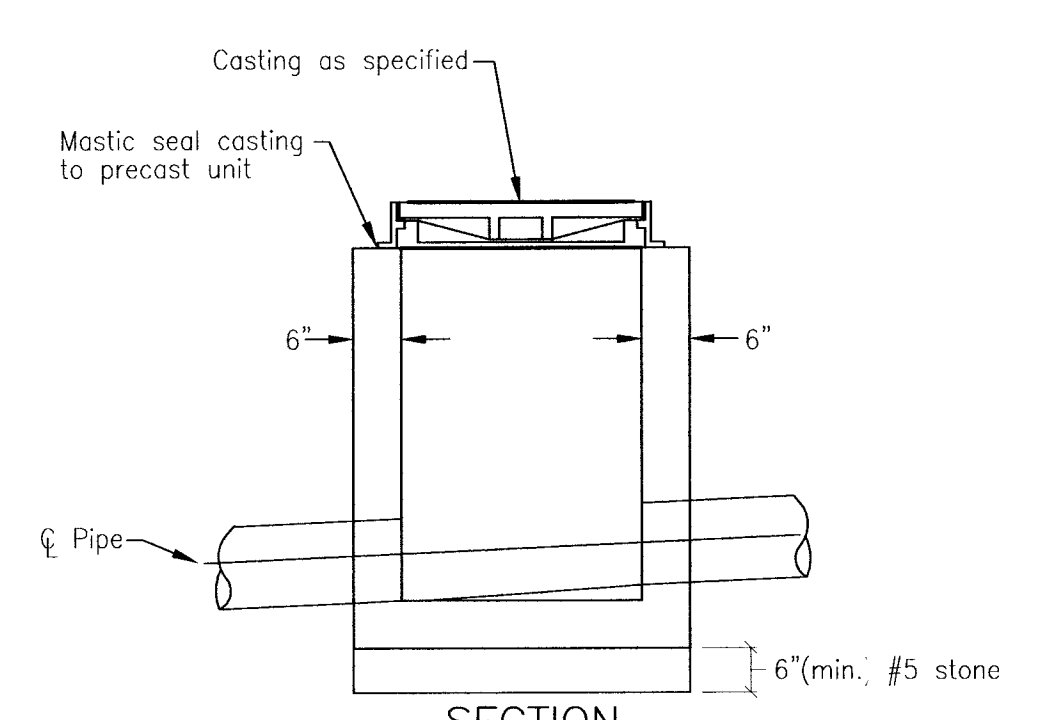
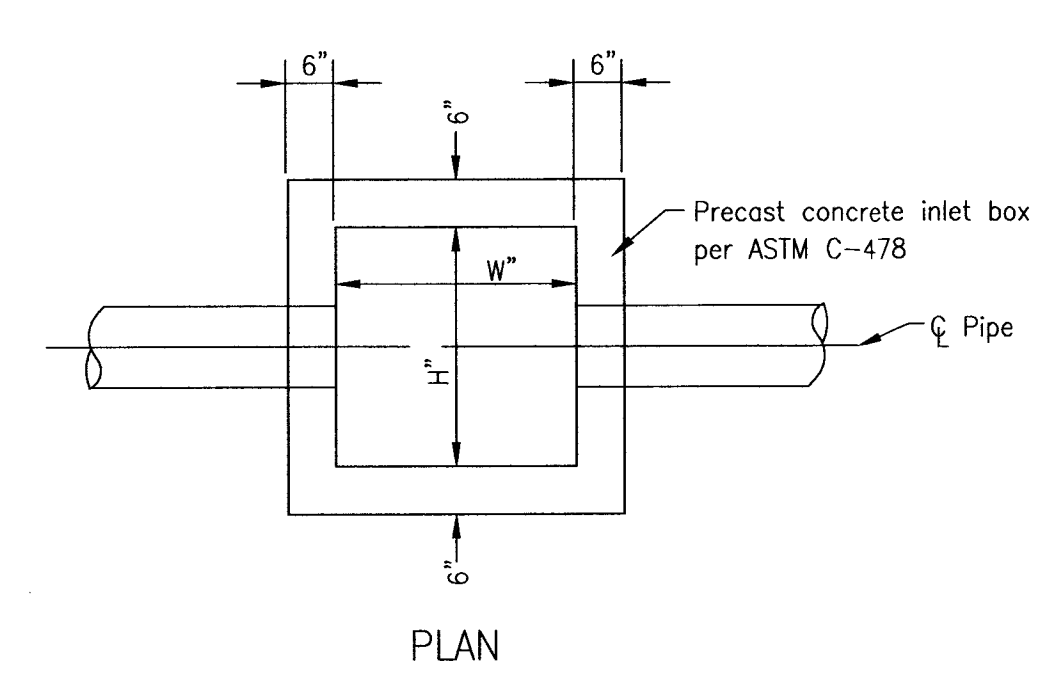
TYPICAL RESIDENTIAL CUL-DE-SAC
Scale: N.T.S.



Notes:
1. Compaction tests and proofroll are required by the County Engineer. A copy of the compaction tests shall be delivered to the owner and the County Engineer's office.
2. Sidewalks shall have sawed contraction joints every 5 feet on center and expansion joints every 50 feet on center and at all intersections.
3. All sidewalks and ADA ramps to be constructed per current INDOT and County standards.
4. Subgrade must be proof rolled prior to the placement of any stone or pavement. Proof rolling shall be done by a fully loaded tri-axle dump truck. There shall be 1 or 2 complete coverages as directed. Roller marks, irregularities or failures shall be corrected. Proof rolling must be completed in the presence of a county inspector.
5. All fill must be constructed in lifts not to exceed six inches.

- ① 1\"/>
- ② 2\"/>
- ③ 6\"/>
- ④ Compacted Subgrade - 95% Standard Proctor
- ⑤ Curb & Gutter per County Stds. - 4000 psi P.C.C.

29' RESIDENTIAL BITUMINOUS PAVEMENT WITH CONCRETE ROLL CURB & GUTTER
Scale: N.T.S.



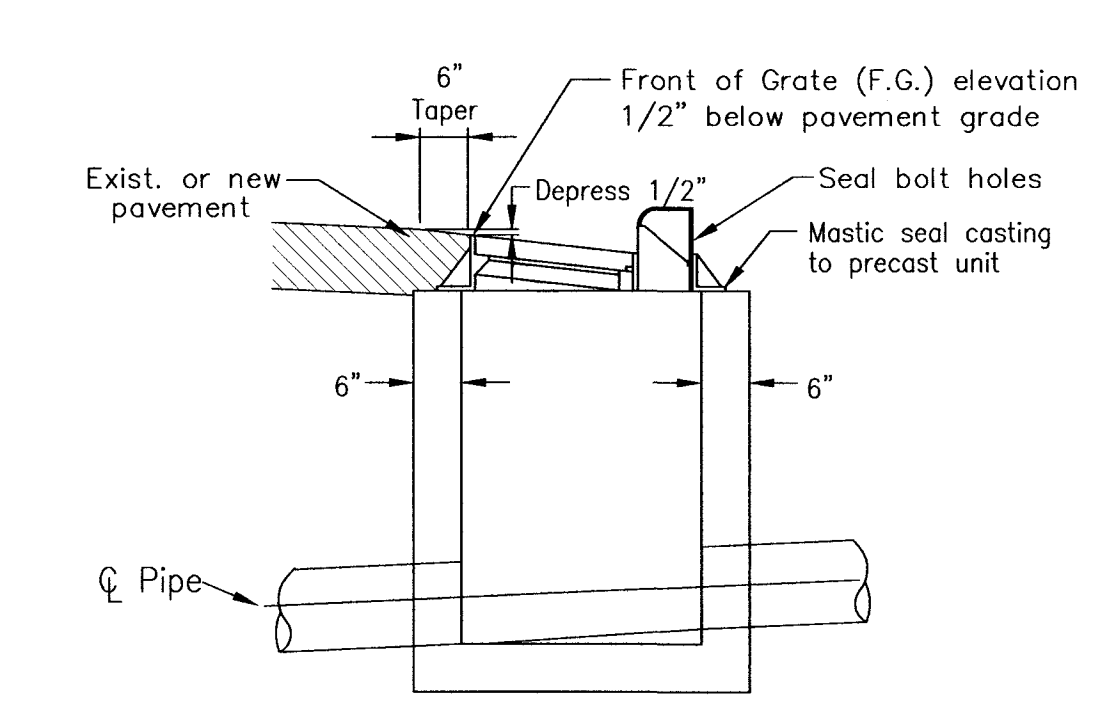
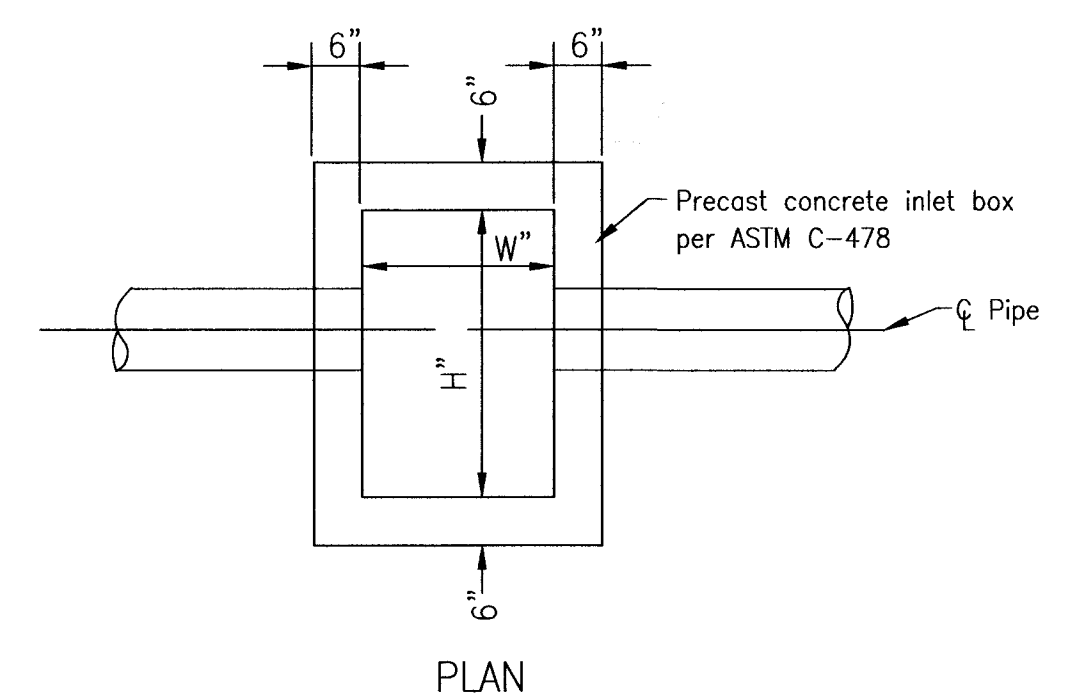
AREA DRAIN/MANHOLE

INLET BOX TABLE

	INLET TYPE	AREA DRAIN	CURB INLET	MANHOLE
BOX SIZE	"W"	24"	24"	24"
	"H"	24"	36"	72"
CASTING	Paved Areas		EJW #7030	
	Grate		Type M2	
CASTING	Non-Paved Areas	EJW #1020		EJW #1022-1
	Grate	Type M2		Type A

INLET NOTES:
All precast units shall conform to ASTM C-478.
Inlets shall be backfilled with granular material and compacted in 8\"/>

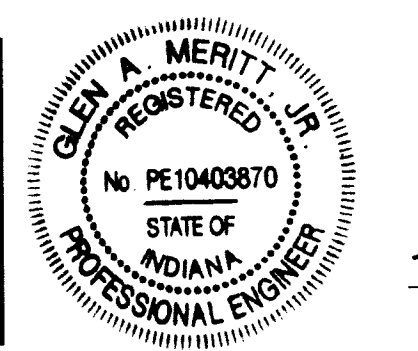
PRECAST INLET BOX
Scale: N.T.S.



CURB INLET

APPROVED
OCT 14 2014
VANDERBURGH COUNTY DRAINAGE BOARD

This drawing and/or specifications is provided as an instrument of service provided by Cash Wagner & Associates, PC and is intended for use on this project only. All drawings, specifications, designs, models, ideas, calculations, and arrangements appearing herein constitute the original and unpublished work of and remain the property of Cash Wagner & Associates, PC. Any reproduction, use or disclosure of the proprietary information contained herein without the prior written consent of the Cash Wagner & Associates, PC is strictly prohibited.



Glen Meritt
8 Oct 14
DATE



414 CITADEL CIRCLE
SUITE B
EVANSVILLE, IN 47715
PH: 812.401.5561
FAX: 812.401.5563
CELL: 812.774.2988
E-MAIL: GMERITT@CASHWAGGNER.COM

REVISIONS

NO.	DATE	BY	DESCRIPTION

PROJECT NO.: 14-1878
DESIGNED BY:
DRAWN BY: G.A.M.
FILENAME: 1878 Road Storm Dets
LAYOUT TAB:
SCALE: As Shown

PROJECT: KINWAY PARK
HECKEL ROAD
EVANSVILLE, INDIANA
ADDRESS:
SHEET TITLE: ROAD & STORM SEWER DETAILS

DATE: 10.08.14
DRAWING NO.: C-113
OR: 18

RECEIVED BY THE VANDERBURGH COUNTY SURVEYORS OFFICE

10/9/2014