

141 Subdivision on V B
 O page 34
 2-752101-019
 R. K. McConnell
 Justice Court
 IN 47711
 4800005542

142 Subdivision on V B
 O page 34
 000-752101-019
 Kelly Waggoner
 Justice Court
 IN 47711
 2004A00039023

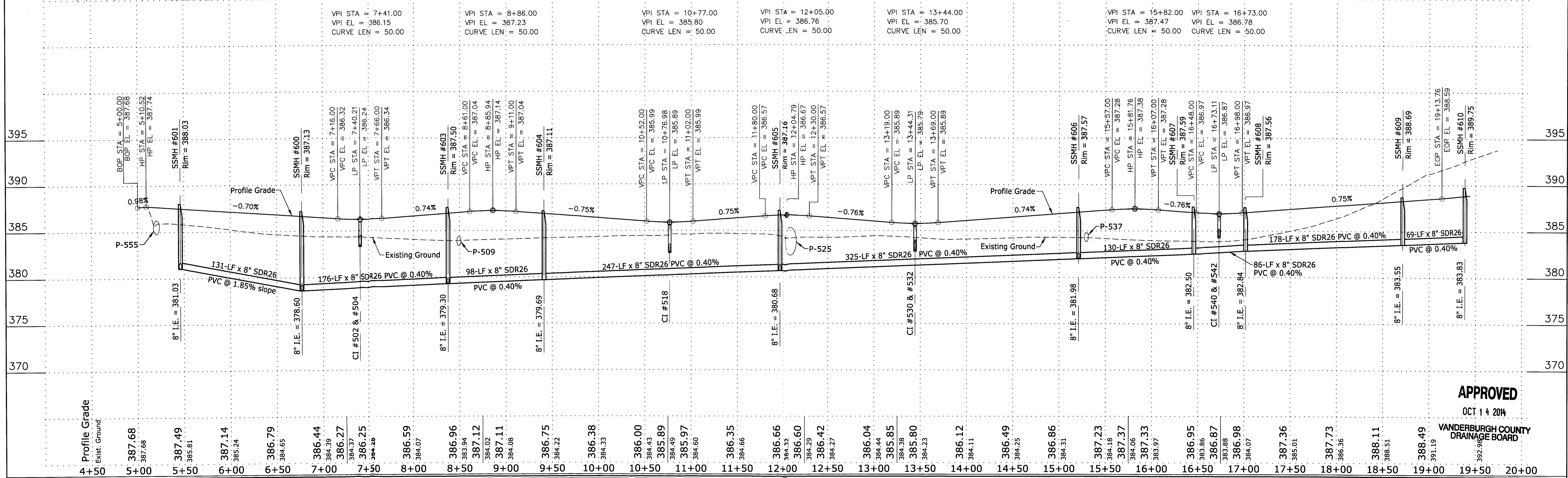
143 Subdivision on V B
 O page 34
 2-752101-019
 Anilimgreyer
 Justice Court
 IN 47711
 480004444

144 Subdivision on V B
 O page 34
 2-752101-019
 Lynn Carter
 Justice Court
 IN 47711
 20070216

145 Subdivision on V B
 O page 34
 2-752101-019
 Robert
 Justice Court
 IN 47711
 20070216

146 Subdivision on V B
 O page 34
 2-752101-019
 Robert
 Justice Court
 IN 47711
 20070216

SCALES:
 1" = 50' HOR
 1" = 5' VER



APPROVED
 OCT 14 2014
 VANDERBURGH COUNTY
 DRAINAGE BOARD

This drawing and/or specifications is provided as an instrument of service provided by Cash Wagner & Associates, PC and is intended for use on this project only. All drawings, specifications, designs, models, ideas, calculations, and arrangements appearing herein constitute the original and unpublished work of and remain the property of Cash Wagner & Associates, PC. Any reproduction, use or disclosure of the proprietary information contained herein without the prior written consent of Cash Wagner & Associates, PC is strictly prohibited.

Written dimensions shown herein shall take precedence over scaled dimensions. Contractors shall calculate and measure required dimensions. Ready Cash Wagner & Associates, PC with any variations to dimensions or conditions from those indicated on these drawings. This drawing was based on available information. Commencement of work constitutes verification and acceptance of existing conditions.

Application of a material or equipment to work installed by others constitutes acceptance of that work and assumption of responsibility for satisfactory installation.

GLEN A. MERRITT, JR.
 REGISTERED PROFESSIONAL ENGINEER
 No. PE10403870
 STATE OF INDIANA

Glen Merritt, Jr.
 SIGNATURE
 16 Sept 14
 DATE

CASH WAGNER & ASSOCIATES, PC
 CONSULTING ENGINEERS • LAND SURVEYORS

414 CITADEL CIRCLE
 SUITE B
 EVANSVILLE, IN 47715
 PH: 812.401.5551
 FAX: 812.401.5553
 CELL: 812.774.2988
 E-MAIL: GMERRIT@CASHWAGNER.COM

NO.	DATE	BY	DESCRIPTION
1			
2			
3			
4			
5			
6			
7			
8			
9			
10			
11			
12			
13			
14			
15			
16			
17			
18			
19			
20			

PROJECT NO.: 14-1878
 PROJECT: KINWAY PARK
 HECKEL ROAD
 EVANSVILLE, IN
 DRAWN BY: G.A.M.
 FILENAME: RCP01001.dwg
 LAYOUT TAB: None
 SHEET TITLE: KINWAY DRIVE
 PLAN & PROFILE

DATE: 09.16.14
 DRAWING NO.: C-104
 OF 18