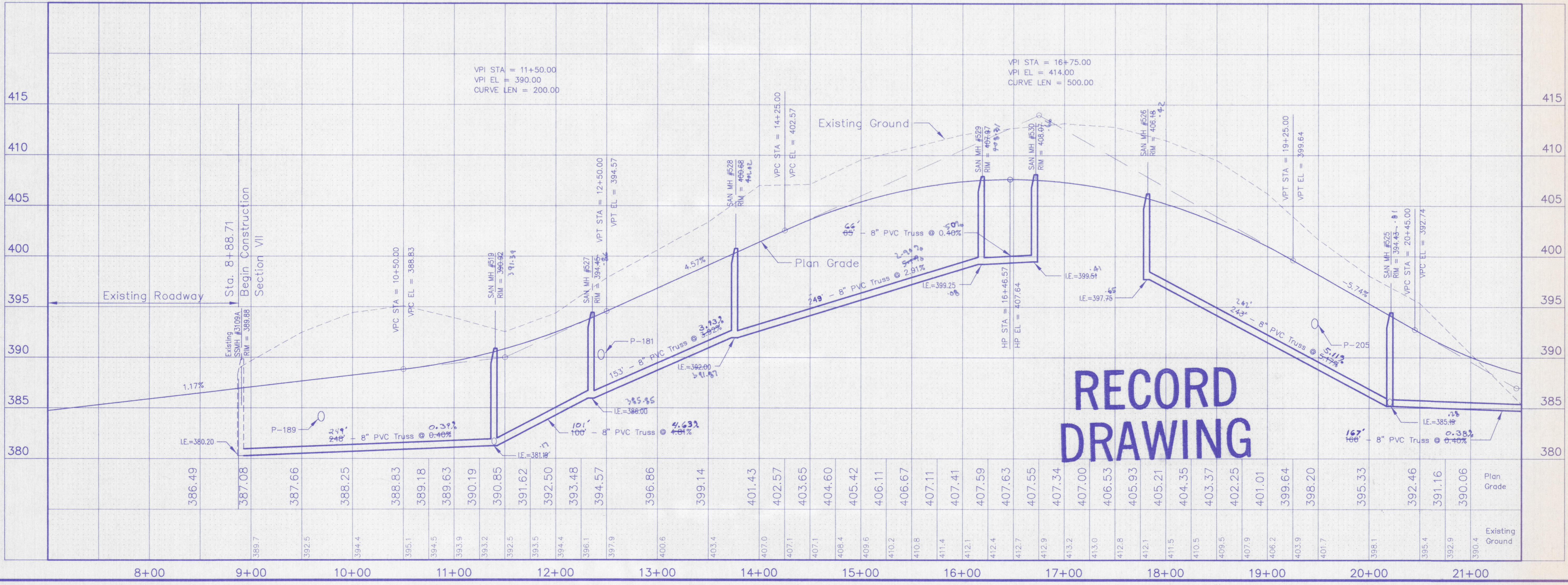


SCALES:
 1" = 50' HOR
 1" = 5' VER

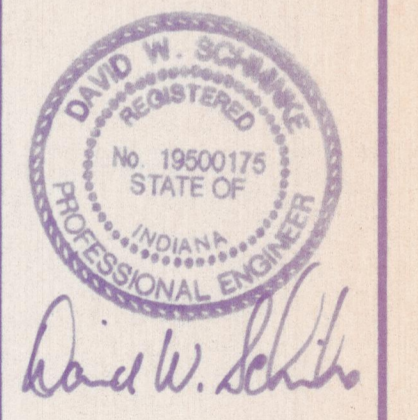


**RECORD
DRAWING**

Morley and Associates, Inc.
 Consulting Engineers/Surveyors/Architects
 600 S.E. Sixth Street
 Evansville, Indiana 47713
 (812) 464-9566

All facts, designs, calculations, and arrangements indicated or represented by this drawing are owned by and the property of Morley and Associates, Inc. and are loaned to you for use only in connection with the project shown on this drawing. No part of this drawing, design, calculations, or arrangements shall be used by or disclosed to any person, firm, or corporation for any purpose whatsoever without the written permission of Morley and Associates, Inc. Written dimensions on these drawings shall have precedence over scale dimensions. Contractors shall verify and be responsible for the accuracy of all dimensions and locations shown on these drawings.

No.	By	Date	Description
1	DWS	3/21/01	Sheet Revision Change of line, storm & sanitary system
2	GD	6-11-01	5/4/01 AS 5/11/01 S



Project: Keystone Section VII
 Keystone Development, LLC
 Sheet Title: Rimridge Drive
 Plan and Profile
 Station 8+88.71 - 21+00

Scale: As Shown
 Designed By: DWS Job Number: 3998-4
 Drawn By: GAM Date: 3-21-01
 Checked By: File Name: RCP02007.dwg
 Sheet Number: C-9 of 18