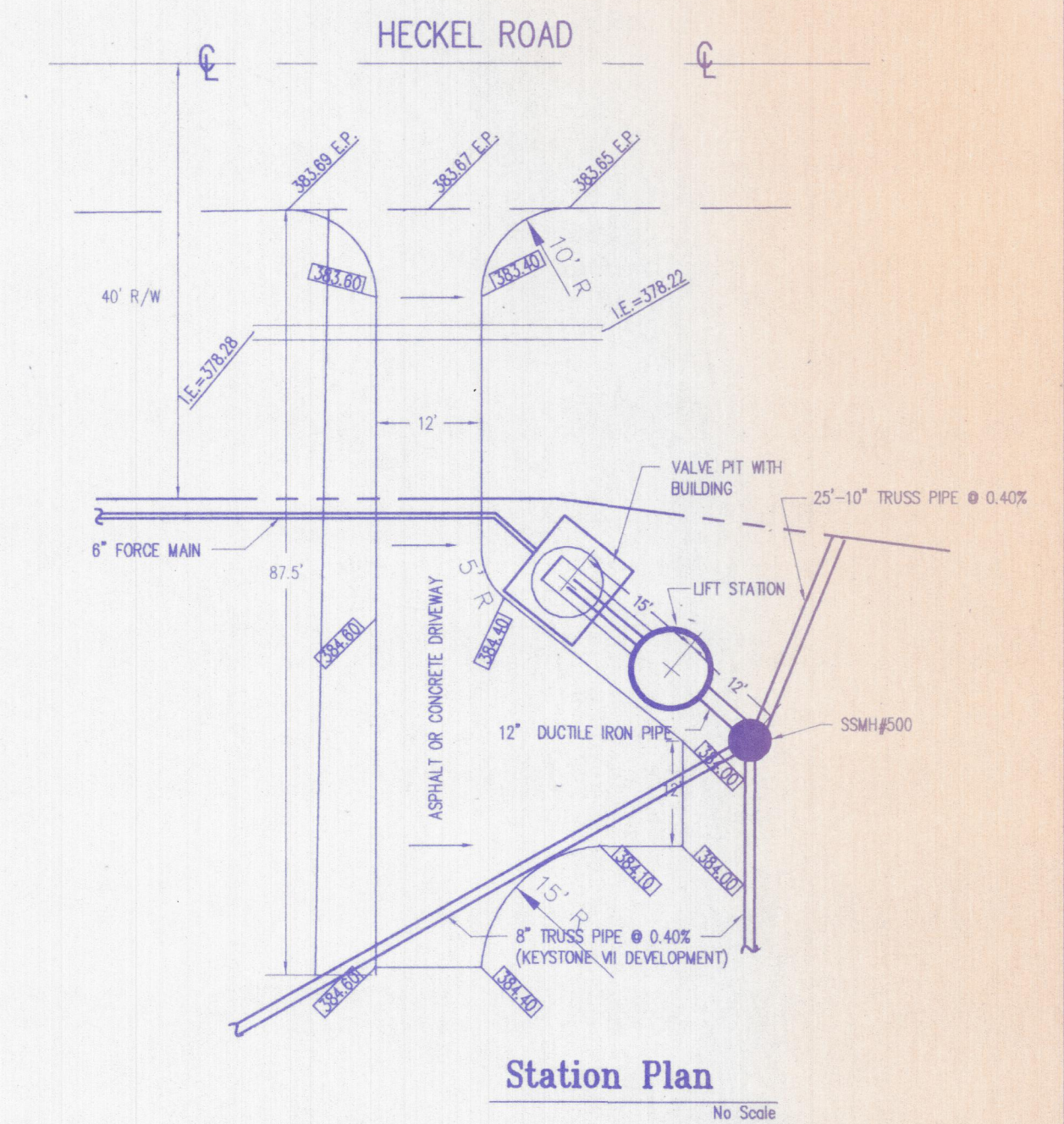
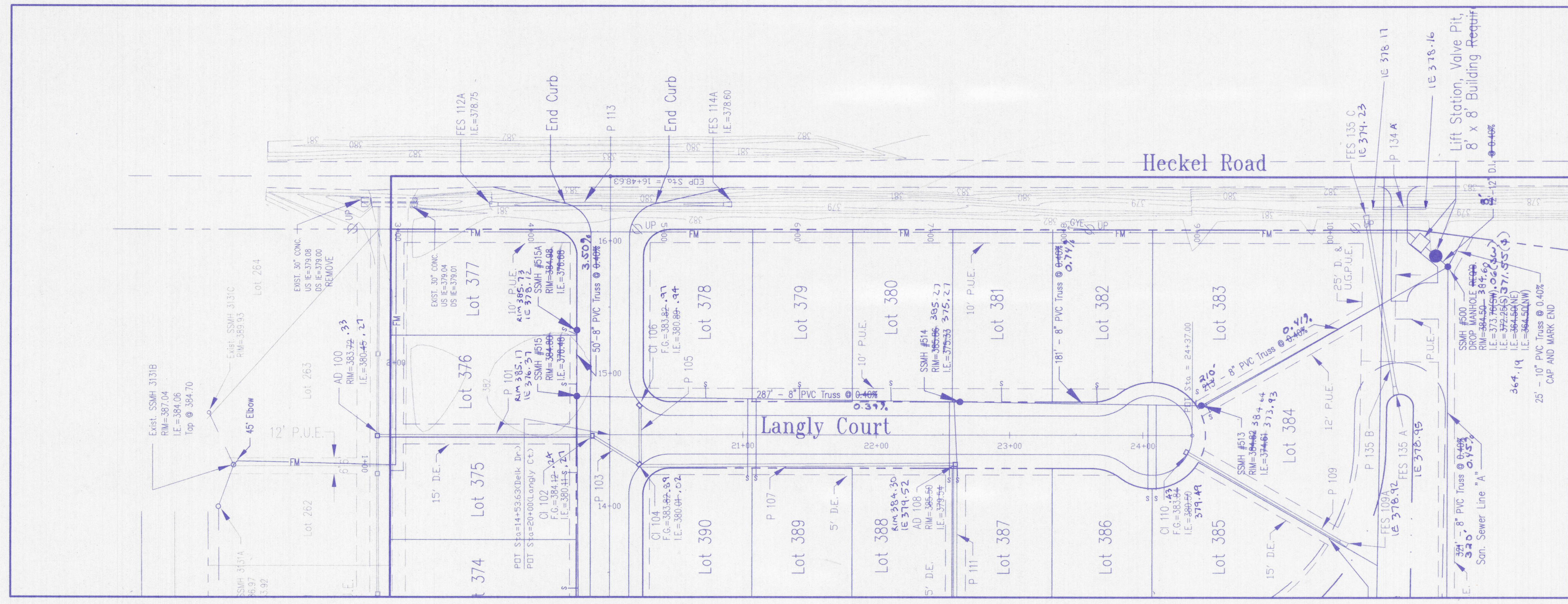


**RECORD  
DRAWING**



Note: Pavement Requirements for Lift Station Entrance  
 - Asphalt pavement : 6" no. 53 stone, 2" binder, and 1" surface  
 - Concrete pavement : 6" depth, 3500psi

SCALES:  
 1" = 50' HOR  
 1" = 5' VER

**Morley and Associates,**  
 Consulting Engineers/Surveyors/Architects  
 600 S.E. Sixth Street  
 Evansville, Indiana 47713  
 (812) 464-9565

Revisions		Description	
No.	By	Date	Description
1	GH	6-11-01	SAN # 577A AS BUILT'S SEC. VIIA

DAVID N. SCHWING  
 REGISTERED  
 No. 19500175  
 STATE OF INDIANA  
 PROFESSIONAL ENGINEER

Project: Keystone Section VIIA  
 Keystone Development, LLC

Sheet Title: Force Main Plan and Profile

Scale: As Shown

Designed By: DWS Job Number: 3998-4  
 Drawn By: GAM Date: 9-19-00  
 Checked By: File Name: RCP01009.dwg

Sheet Number: C-12 of 18