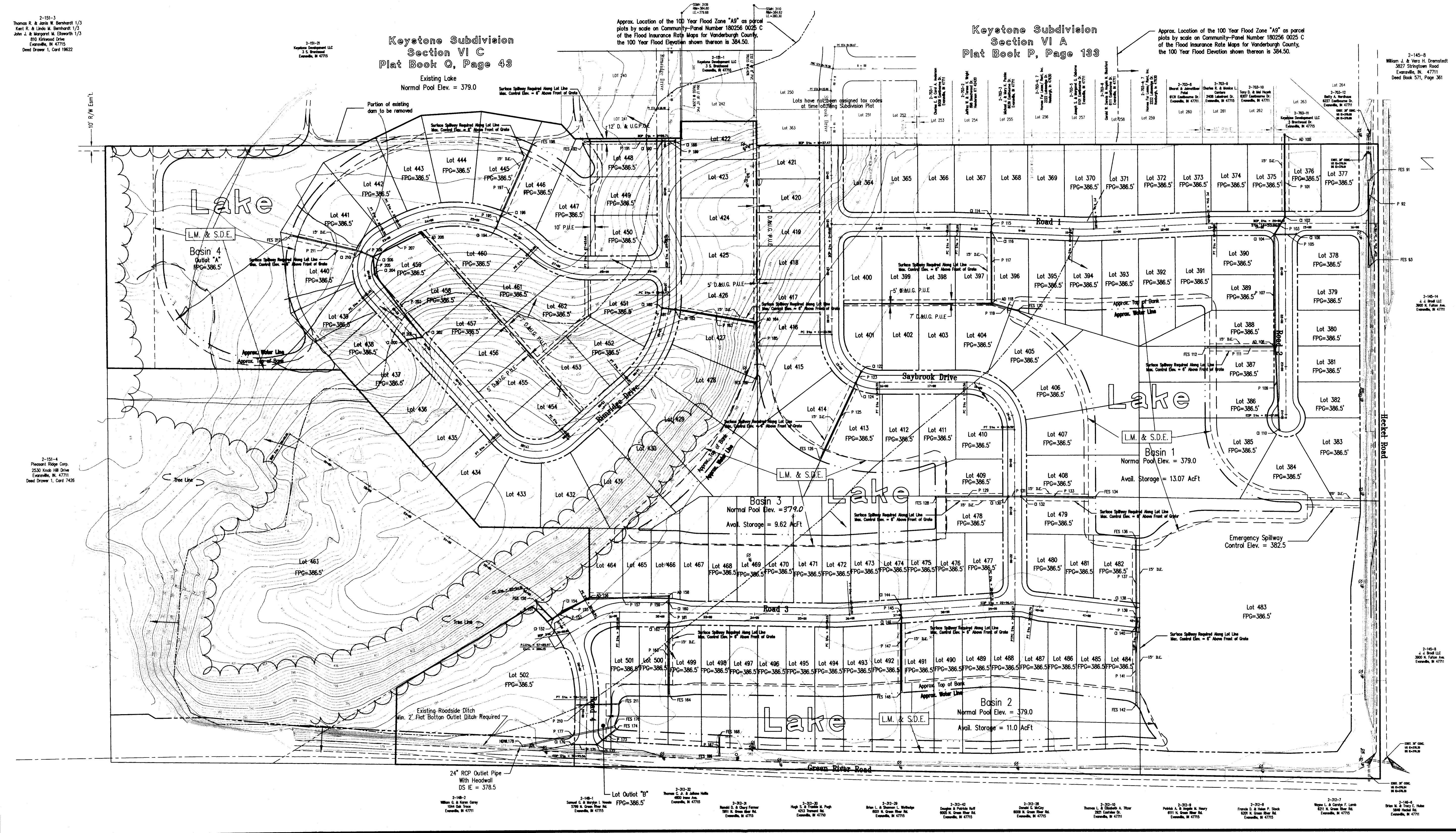


2-151-3
 Thomas R. & Janis W. Spahrhardt 1/3
 Kent R. & Linda M. Barnhart 1/3
 John J. & Margaret M. Elsworth 1/3
 250 Kitchard Drive
 Evansville, IN 47715
 Deed Drawer 1, Card 19622

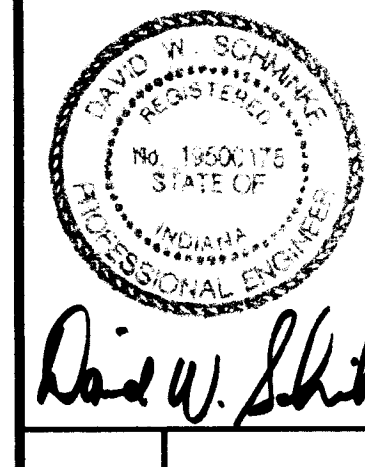
**Keystone Subdivision
 Section VI C
 Plat Book O, Page 43**
 Existing Lake
 Normal Pool Elev. = 379.0

**Keystone Subdivision
 Section VI A
 Plat Book P, Page 133**



All ideas, designs, calculations, and arrangements indicated or represented by this drawing are owned by and the property of Morley and Associates, Inc. No part of this drawing may be reproduced, stored in a retrieval system, or transmitted in any form or by any means, electronic, mechanical, photocopying, recording, or by any information storage and retrieval system, without the written permission of Morley and Associates, Inc. When dimensions on these drawings and have precedence over the dimensions on the plans, the dimensions on the drawings shall govern. All dimensions and conditions on the plans and drawings must be certified by any variations from the dimensions and conditions shown by these drawings.

No.	By	Date	Description



Project: Keystone Section VII
 Keystone Development, LLC
 Sheet Title: Prel. Drainage Plan
 Scale: 1" = 100'
 Designed By: DWS Job Number: 3998-4
 Drawn By: GAM Date: 3-20-00
 Checked By: File Name: 3998base.dwg
 Sheet Number: 1 of 3