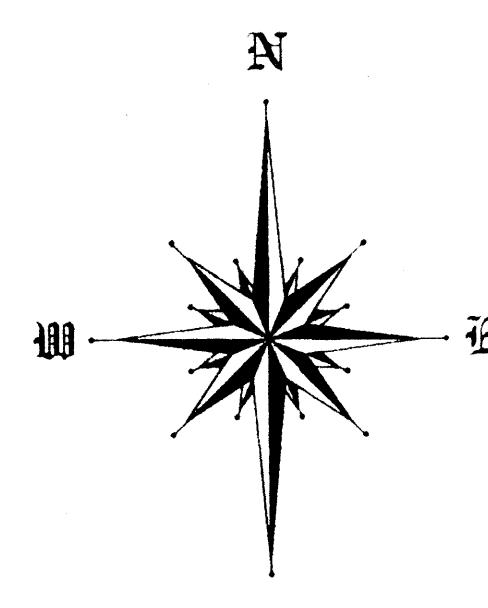
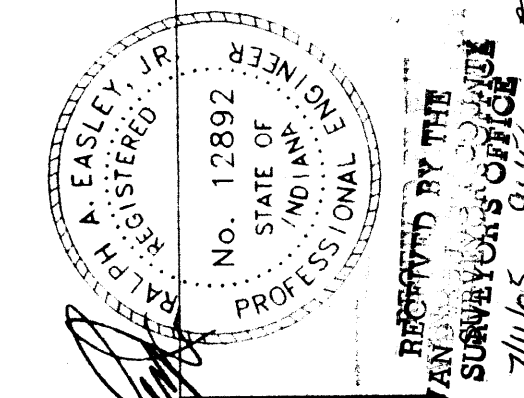


N 89°49'03" E 1310.93'



STORM SEWER LINE TABLE

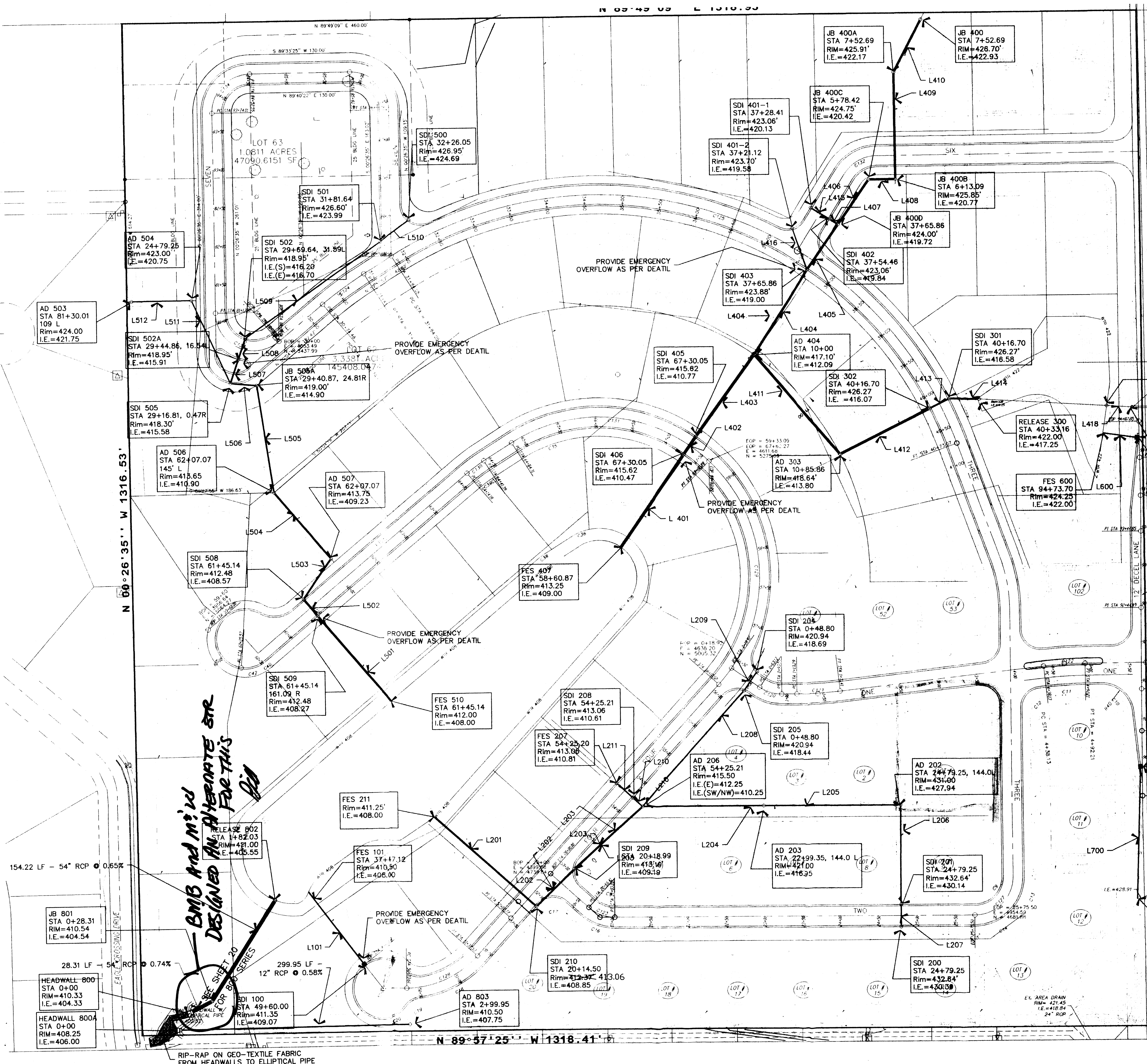
LINE 101	- 119.07 LF - 15" DIA AT 0.74%
LINE 201	- 176.04 LF - 24" DIA AT 0.48%
LINE 202	- 64.49 LF - 24" DIA AT 0.48%
LINE 203	- 121.17 LF - 24" DIA AT 0.88%
LINE 204	- 158.73 LF - 15" AT 2.96%
LINE 205	- 179.90 LF - 15" AT 6.11%
LINE 206	- 129.50 LF - 15" DIA AT 1.70%
LINE 207	- 29.90 LF - 12" DIA AT 0.86%
LINE 208	- 200.77 LF - 12" DIA AT 4.07%
LINE 209	- 30.73 LF - 12" DIA AT 0.81%
LINE 210	- 16.53 LF - 12" DIA AT 2.15%
LINE 211	- 29.00 LF - 12" DIA AT 0.71%
LINE 401	- 145.96 LF - 42" DIA AT 1.00%
LINE 402	- 29.00 LF - 42" DIA AT 1.00%
LINE 403	- 130.51 LF - 42" DIA AT 1.00%
LINE 404	- 130.80 LF - 30" DIA AT 5.29%
LINE 405	- 71.88 LF - 30" DIA AT 1.00%
LINE 406	- 70.65 LF - 30" DIA AT 1.00%
LINE 407	- 12.71 LF - 21" DIA AT 1.00%
LINE 408	- 34.66 LF - 30" DIA AT 1.00%
LINE 409	- 139.81 LF - 30" DIA AT 1.00%
LINE 410	- 78.65 LF - 30" DIA AT 1.00%
LINE 411	- 171.71 LF - 30" DIA AT 1.00%
LINE 412	- 130.48 LF - 30" DIA AT 1.74%
LINE 413	- 29.00 LF - 30" DIA AT 1.74%
LINE 414	- 38.67 LF - 30" DIA AT 1.74%
LINE 415	- 29.00 LF - 15" DIA AT 1.00%
LINE 416	- 57.81 LF - 15" DIA AT 1.00%
LINE 417	OMITTED
LINE 418	- 33.06 LF - 24" DIA AT 9.38%
LINE 501	- 146.59 LF - 30" DIA AT 0.60%
LINE 502	- 29.00 LF - 30" DIA AT 1.02%
LINE 503	- 64.09 LF - 24" DIA AT 1.02%
LINE 504	- 114.00 LF - 24" DIA AT 1.02%
LINE 505	- 140.89 LF - 18" DIA AT 2.83%
LINE 506	- 34.23 LF - 18" DIA AT 2.00%
LINE 507	- 32.80 LF - 18" DIA AT 1.00%
LINE 508	- 29.00 LF - 18" DIA AT 1.00%
LINE 509	- 215.41 LF - 12" DIA AT 3.38%
LINE 510	- 46.95 LF - 12" DIA AT 1.50%
LINE 511	- 119.33 LF - 12" DIA AT 4.33%
LINE 512	- 78.00 LF - 12" DIA AT 1.28%
LINE 600	- 44.85 LF - 12" DIA AT 4.35%
LINE 700	- 171.90 LF - 12" DIA AT 2.11%



ANDY EASLEY ENGINEERING
 CIVIL ENGINEERING (812) 424-2481 LAND SURVEYING
 1133 WEST MILL ROAD
 EVANSVILLE, INDIANA 47710

Storm Drainage Plan
 Newburgh Development
 Vanderburgh County, Indiana

5.0



STORM SEWER NODE INPUT DATA

Node No.	Nothing	Easting	Rim Elev (ft)	Junc	Size (Dia/ft)	Width (ft)	K1	Inlet Type	Node No.
1	5284.3170	4578.5083	415.618	circ	4.000	4.000	1.00	none	1
2	5308.0364	4595.1934	415.418	circ	4.000	4.000	1.00	none	2
3	5413.9208	4671.4831	417.100	circ	4.000	4.000	1.00	none	3
4	5223.9280	4711.8905	423.600	circ	4.000	4.000	1.00	none	4
5	5282.9178	4782.6217	424.000	circ	4.000	4.000	1.00	none	5
6	5641.0615	4822.7688	424.137	circ	4.000	4.000	1.00	none	6
7	5389.4197	4711.8219	424.000	circ	4.000	4.000	1.00	none	7
8	5641.1150	4847.4317	425.847	circ	1.000	4.000	1.00	none	8
9	5700.9166	4846.2016	425.810	circ	4.000	4.000	1.00	none	9
10	5846.7068	4932.0787	426.700	circ	4.000	4.000	1.00	none	10
11	5283.5716	4783.2623	418.140	circ	4.000	4.000	1.00	none	11
12	5184.0696	4588.4261	428.270	circ	4.000	4.000	1.00	none	12
13	5354.9672	4925.8705	426.270	circ	4.000	4.000	1.00	none	13
14	5184.0696	4588.4261	422.800	circ	4.000	4.000	1.00	none	14
15	5604.9108	4747.1808	423.060	circ	4.000	4.000	1.00	none	15
16	5578.2830	4732.7862	423.700	circ	4.000	4.000	1.00	none	16
17	5344.0352	4730.0782	422.000	circ	4.000	4.000	1.00	none	17
18	5342.0362	5163.0806	429.000	circ	4.000	4.000	1.00	none	18

STORM SEWER NODE INPUT DATA

Node No.	Nothing	Easting	Rim Elev (ft)	Junc	Size (Dia/ft)	Width (ft)	K1	Inlet Type	Node No.
1	5284.3170	4578.5083	415.618	circ	4.000	4.000	1.00	none	1
2	5308.0364	4595.1934	415.418	circ	4.000	4.000	1.00	none	2
3	5413.9208	4671.4831	417.100	circ	4.000	4.000	1.00	none	3
4	5223.9280	4711.8905	423.600	circ	4.000	4.000	1.00	none	4
5	5282.9178	4782.6217	424.000	circ	4.000	4.000	1.00	none	5
6	5641.0615	4822.7688	424.137	circ	4.000	4.000	1.00	none	6
7	5389.4197	4711.8219	424.000	circ	4.000	4.000	1.00	none	7
8	5641.1150	4847.4317	425.847	circ	1.000	4.000	1.00	none	8
9	5700.9166	4846.2016	425.810	circ	4.000	4.000	1.00	none	9
10	5846.7068	4932.0787	426.700	circ	4.000	4.000	1.00	none	10
11	5283.5716	4783.2623	418.140	circ	4.000	4.000	1.00	none	11
12	5184.0696	4588.4261	428.270	circ	4.000	4.000	1.00	none	12
13	5354.9672	4925.8705	426.270	circ	4.000	4.000	1.00	none	13
14	5184.0696	4588.4261	422.800	circ	4.000	4.000	1.00	none	14
15	5604.9108	4747.1808	423.060	circ	4.000	4.000	1.00	none	15
16	5578.2830	4732.7862	423.700	circ	4.000	4.000	1.00	none	16
17	5344.0352	4730.0782	422.000	circ	4.000	4.000	1.00	none	17
18	5342.0362	5163.0806	429.000	circ	4.000	4.000	1.00	none	18

STORM SEWER NODE INPUT DATA

Node No.	Nothing	Easting	Rim Elev (ft)	Junc	Size (Dia/ft)	Width (ft)	K1	Inlet Type	Node No.
1	5079.6120	4099.1245	412.480	circ	4.000	4.000	1.00	combo	1
2	5101.8516	4081.1116	412.480	circ	1.000	4.000	1.00	combo	2
3	5154.2507	4118.0100	413.750	circ	2.000	4.000	1.00	combo	3
4	5241.6118	4044.8420	413.510	circ	4.000	4.000	1.00	combo	4
5	5381.0241	4024.0849	419.000	circ	4.000	4.000	1.00	none	5
6	5384.2457	3990.0020	419.000	circ	4.000	4.000	1.00	none	6
7	5415.2867	4000.5845	418.900	circ	5.000	4.000	1.00	none	7
8	5442.7354	4008.9424	418.900	circ	8.000	4.000	1.00	none	8
9	5594.6498	4273.8295	426.350	circ	4.000	4.000	1.00	combo	9
10	5492.7216	4190.2666	423.000	circ	5.000	4.000	1.00	none	10
11	5492.1187	3962.7009	424.000	circ	5.000	4.000	1.00	none	11

STORM SEWER NODE INPUT DATA

Node No.	Nothing	Easting	Rim Elev (ft)	Junc	Size (Dia/ft)	Width (ft)	K1	Inlet Type	Node No.
1	5102.1152	5169.4462	416.640	circ	4.000	4.000	1.00	none	1

STORM SEWER NODE INPUT DATA

Node No.	Nothing	Easting	Rim Elev (ft)	Junc	Size (Dia/ft)	Width (ft)	K1	Inlet Type	Node No.
1	4871.5343	5171.1173	434.670	circ	1.000	4.000	1.00	none	1
2	4555.3076	3948.8741	410.086	circ	4.000	4.000	1.00	none	2
3	4710.2930	4038.6491	409.864	circ	4.000	4.000	1.00	none	3

BMB AND M.M.'S
 DESIGNED AND PREPARED FOR THIS
 SHEET 20

RIP-RAP ON GEO-TEXTILE FABRIC FROM HEADWALLS TO ELLIPTICAL PIPE