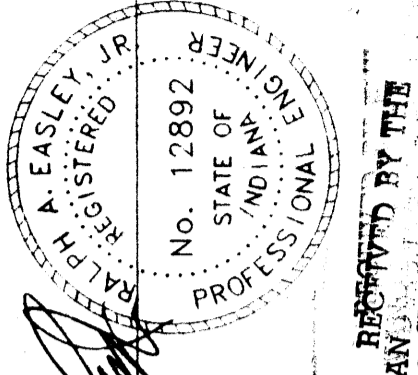


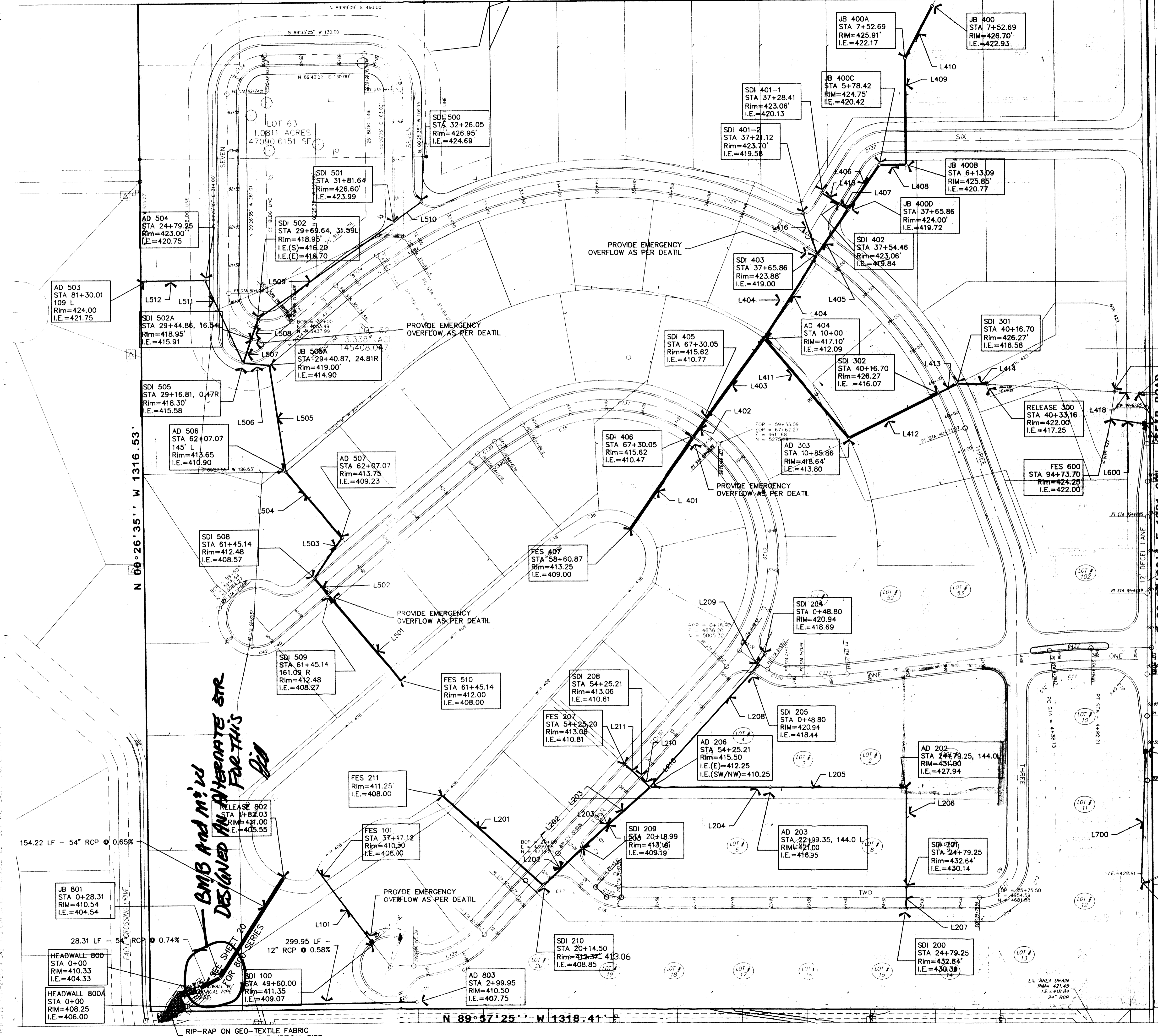
STORM SEWER LINE TABLE

LINE 101	- 119.07 LF - 15 DIA. AT 0.74%
LINE 201	- 176.04 LF - 24 DIA. AT 0.48%
LINE 202	- 64.49 LF - 24" DIA. AT 0.48%
LINE 203	- 121.17 LF - 24" DIA. AT 0.88%
LINE 204	- 158.73 LF - 15" AT 2.96%
LINE 205	- 179.90 LF - 15" AT 6.11%
LINE 206	- 129.50 LF - 15" DIA. AT 1.70%
LINE 207	- 29.00 LF - 12" DIA. AT 0.86%
LINE 208	- 200.77 LF - 12" DIA. AT 4.07%
LINE 209	- 30.73 LF - 12" DIA. AT 0.81%
LINE 210	- 16.53 LF - 12" DIA. AT 2.15%
LINE 211	- 29.00 LF - 12" DIA. AT 0.71%
LINE 401	- 145.96 LF - 42" DIA. AT 1.00%
LINE 402	- 29.00 LF - 42" DIA. AT 1.00%
LINE 403	- 130.51 LF - 42" DIA. AT 1.00%
LINE 404	- 130.60 LF - 30" DIA. AT 1.00%
LINE 405	- 71.68 LF - 30" DIA. AT 1.00%
LINE 406	- 70.65 LF - 30" DIA. AT 1.00%
LINE 407	- 12.71 LF - 21" DIA. AT 1.00%
LINE 408	- 34.66 LF - 30" DIA. AT 1.00%
LINE 409	- 139.61 LF - 30" DIA. AT 1.00%
LINE 410	- 76.65 LF - 30" DIA. AT 1.00%
LINE 411	- 171.71 LF - 30" DIA. AT 1.00%
LINE 412	- 130.48 LF - 30" DIA. AT 1.74%
LINE 413	- 29.00 LF - 30" DIA. AT 1.74%
LINE 414	- 38.57 LF - 30" DIA. AT 1.74%
LINE 415	- 29.00 LF - 15" DIA. AT 1.00%
LINE 416	- 57.61 LF - 15" DIA. AT 1.00%
LINE 417	- OMITTED
LINE 418	- 33.06 LF - 24" DIA. AT 9.38%
LINE 501	- 146.59 LF - 30" DIA. AT 0.80%
LINE 502	- 29.00 LF - 30" DIA. AT 1.02%
LINE 503	- 64.09 LF - 24" DIA. AT 1.02%
LINE 504	- 114.00 LF - 24" DIA. AT 1.02%
LINE 505	- 140.89 LF - 18" DIA. AT 2.83%
LINE 506	- 34.23 LF - 18" DIA. AT 2.00%
LINE 507	- 32.80 LF - 18" DIA. AT 1.00%
LINE 508	- 29.00 LF - 18" DIA. AT 1.00%
LINE 509	- 215.41 LF - 12" DIA. AT 3.38%
LINE 510	- 46.95 LF - 12" DIA. AT 1.50%
LINE 511	- 119.33 LF - 12" DIA. AT 4.33%
LINE 512	- 78.00 LF - 12" DIA. AT 1.26%
LINE 600	- 44.85 LF - 12" DIA. AT 4.35%
LINE 700	- 171.90 LF - 12" DIA. AT 2.11%



ANDY EASLEY ENGINEERING
 CIVIL ENGINEERING (EIT) 424-2481 LAND SURVEYING
 EVANSVILLE, INDIANA 47710
 1133 WEST MILL ROAD

Storm Drainage Plan
NEWBURGH LAKES
 Newburgh Development
 Vanderburgh County, Indiana



STORM SEWER NODE INPUT DATA

Node No.	Northing	Easting	Rim Elev. (ft)	Structure	Size (ft)	Material	Inlet Node No.	Outlet Node No.
1	5284.3170	4578.5083	415.618	circ	4.000	4.000	none	1
2	5306.0364	4595.1934	415.618	circ	4.000	4.000	1.00	none
3	5413.9208	4317.100	415.618	circ	4.000	4.000	1.00	none
4	5523.9280	4318.8905	421.850	circ	3.000	4.000	1.00	none
5	5582.9178	4242.6217	424.200	circ	4.000	4.000	1.00	none
6	5644.0613	4822.7688	424.137	circ	4.000	4.000	1.00	none
7	5689.8197	4771.8234	421.060	circ	4.000	4.000	1.00	none
8	5641.1150	4891.4332	425.847	circ	4.000	4.000	1.00	none
9	5780.9486	4856.4016	425.910	circ	4.000	4.000	1.00	none
10	5848.7649	4856.700	425.700	circ	4.000	4.000	1.00	none
11	5283.5716	4783.2623	418.640	circ	4.000	4.000	1.00	none
12	5341.3672	4825.8005	426.270	circ	4.000	4.000	1.00	none
13	5374.0696	4964.4261	422.050	circ	4.000	4.000	1.00	none
14	5406.9108	4906.9108	425.000	circ	4.000	4.000	1.00	none
15	5574.2830	4752.7882	421.700	circ	4.000	4.000	1.00	none
16	5744.0182	5306.0182	422.000	circ	4.000	4.000	1.00	none
17	5342.0362	5163.0806	429.000	circ	4.000	4.000	1.00	none

STORM SEWER NODE INPUT DATA

Node No.	Northing	Easting	Rim Elev. (ft)	Structure	Size (ft)	Material	Inlet Node No.	Outlet Node No.
1	5079.6129	4099.7245	432.480	circ	4.000	4.000	1.00	none
2	5101.8916	4081.1116	432.480	circ	4.000	4.000	1.00	none
3	5154.7507	4118.0100	431.750	circ	2.000	4.000	1.00	none
4	5241.6118	4048.3420	433.616	circ	4.000	4.000	1.00	none
5	5361.0241	4024.0849	419.000	circ	4.000	4.000	1.00	none
6	5364.2257	3990.0020	418.300	circ	4.000	4.000	1.00	none
7	5415.2849	4100.5845	418.300	circ	4.000	4.000	1.00	none
8	5447.7174	4096.9424	418.300	circ	4.000	4.000	1.00	none
9	5504.8020	4094.8020	426.000	circ	4.000	4.000	1.00	none
10	5594.6498	4224.8295	426.950	circ	4.000	4.000	1.00	none
11	5482.7216	3945.2666	423.000	circ	4.000	4.000	1.00	none
12	5442.1187	3966.2109	424.000	circ	4.000	4.000	1.00	none

STORM SEWER NODE INPUT DATA

Node No.	Northing	Easting	Rim Elev. (ft)	Structure	Size (ft)	Material	Inlet Node No.	Outlet Node No.
1	5302.1152	5164.4462	430.440	circ	4.000	4.000	1.00	none

STORM SEWER NODE INPUT DATA

Node No.	Northing	Easting	Rim Elev. (ft)	Structure	Size (ft)	Material	Inlet Node No.	Outlet Node No.
1	4871.5343	5171.1173	434.670	circ	3.000	4.000	1.00	none

STORM SEWER NODE INPUT DATA

Node No.	Northing	Easting	Rim Elev. (ft)	Structure	Size (ft)	Material	Inlet Node No.	Outlet Node No.
1	4555.3076	3938.8741	410.086	circ	4.000	4.000	1.00	none
2	4710.2030	4038.6491	409.864	circ	4.000	4.000	1.00	none

BMB And M.I.D. DESIGNED AN ALTERNATE SR FOR THIS AREA

RIP-RAP ON GEO-TEXTILE FABRIC FROM HEADWALLS TO ELLIPTICAL PIPE