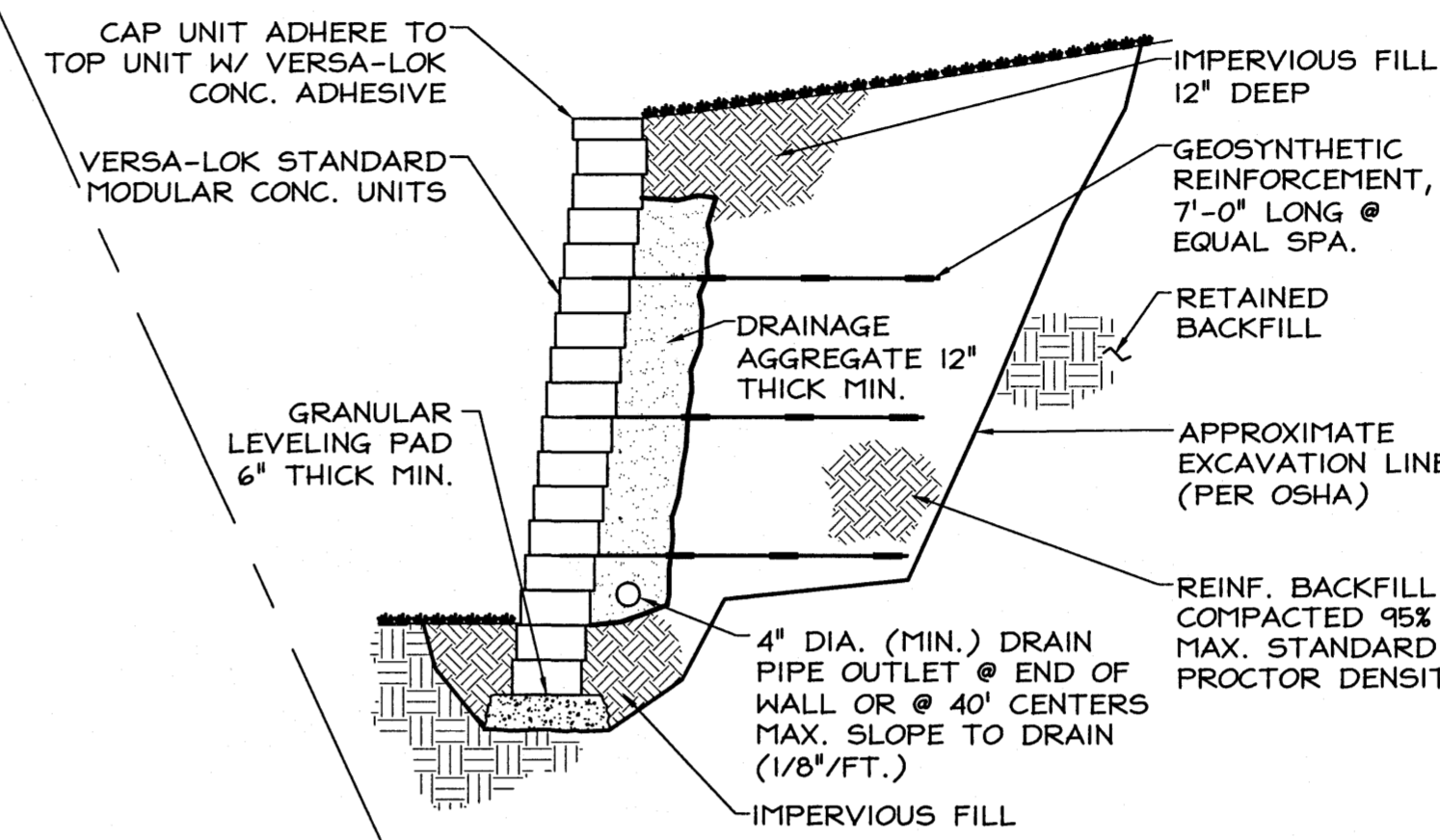


GENERAL ASPHALT NOTES:

- ALL MATERIALS SHALL CONFORM TO THE FOLLOWING
 - AGGREGATE BASE - CRUSHED LIMESTONE INDIANA STATE HIGHWAY #53
 - TACK COATS - INDOT STANDARD SPECIFICATIONS SECTION 922
 - BASE COURSE - HOT PLANT MIXED, HOT LAID, BITUMINOUS BASE COURSE, INDOT #8 BASE
 - WEARING SURFACE COURSE - HOT PLANT MIXED, HOT LAID, BITUMINOUS SURFACE COURSE, INDOT #11 SURFACE
- MIXES SHALL BE DESIGNED BY A CERTIFIED HMA PRODUCER.
- DO NOT PLACE ASPHALT MATERIALS IF THE SUBSTRATE IS WET OR EXCESSIVELY DAMP OR IF THE FOLLOWING CONDITIONS ARE NOT MET:
 - TACK COATS: MINIMUM SURFACE TEMPERATURE OF 60°F
 - ASPHALT BASE COURSE: MINIMUM SURFACE TEMPERATURE OF 40°F & RISING AT THE TIME OF PLACEMENT.
 - ASPHALT SURFACE COURSE: MINIMUM SURFACE TEMPERATURE OF 60°F AT THE TIME OF PLACEMENT.
- THE MIX SHALL BE SPREAD AT A MINIMUM TEMPERATURE OF 250°F.
- BEGIN COMPACTION AS SOON AS PLACED HOT-MIX PAVING WILL BEAR ROLLER WEIGHT WITHOUT EXCESSIVE DISPLACEMENT. COMPACTION SHALL BE COMPLETED BEFORE THE MIX TEMPERATURE COOLS TO 185°F.
- COMPACT EACH COURSE TO PRODUCE THE THICKNESS INDICATED WITHIN THE FOLLOWING TOLERANCES:
 - BASE COURSE: PLUS OR MINUS 1/4"
 - SURFACE COURSE: PLUS 1/8", NO MINUS
- COMPACT EACH COURSE TO PRODUCE A SMOOTHNESS WITHIN THE FOLLOWING TOLERANCES AS DETERMINED BY USING A 10'-0" STRAIGHTEDGE APPLIED TRANSVERSELY OR LONGITUDINALLY TO PAVED AREAS:
 - BASE COURSE: 1/4"
 - SURFACE COURSE: 1/8"
- TRANSVERSE JOINTS SHALL BE PREPARED WITH A VERTICAL SURFACE AND SHALL BE CLEANED AND A TACK COAT PROVIDED PRIOR TO PLACEMENT OF ASPHALT.
- JOINTS SHALL BE CONSTRUCTED TO ENSURE A CONTINUOUS BOND BETWEEN ADJOINING PAVING SECTIONS.
- CONSTRUCT JOINTS FREE OF DEPRESSIONS WITH THE SAME TEXTURE & SMOOTHNESS AS OTHER SECTIONS OF HOT-MIX ASPHALT COURSE.

POINT DATA

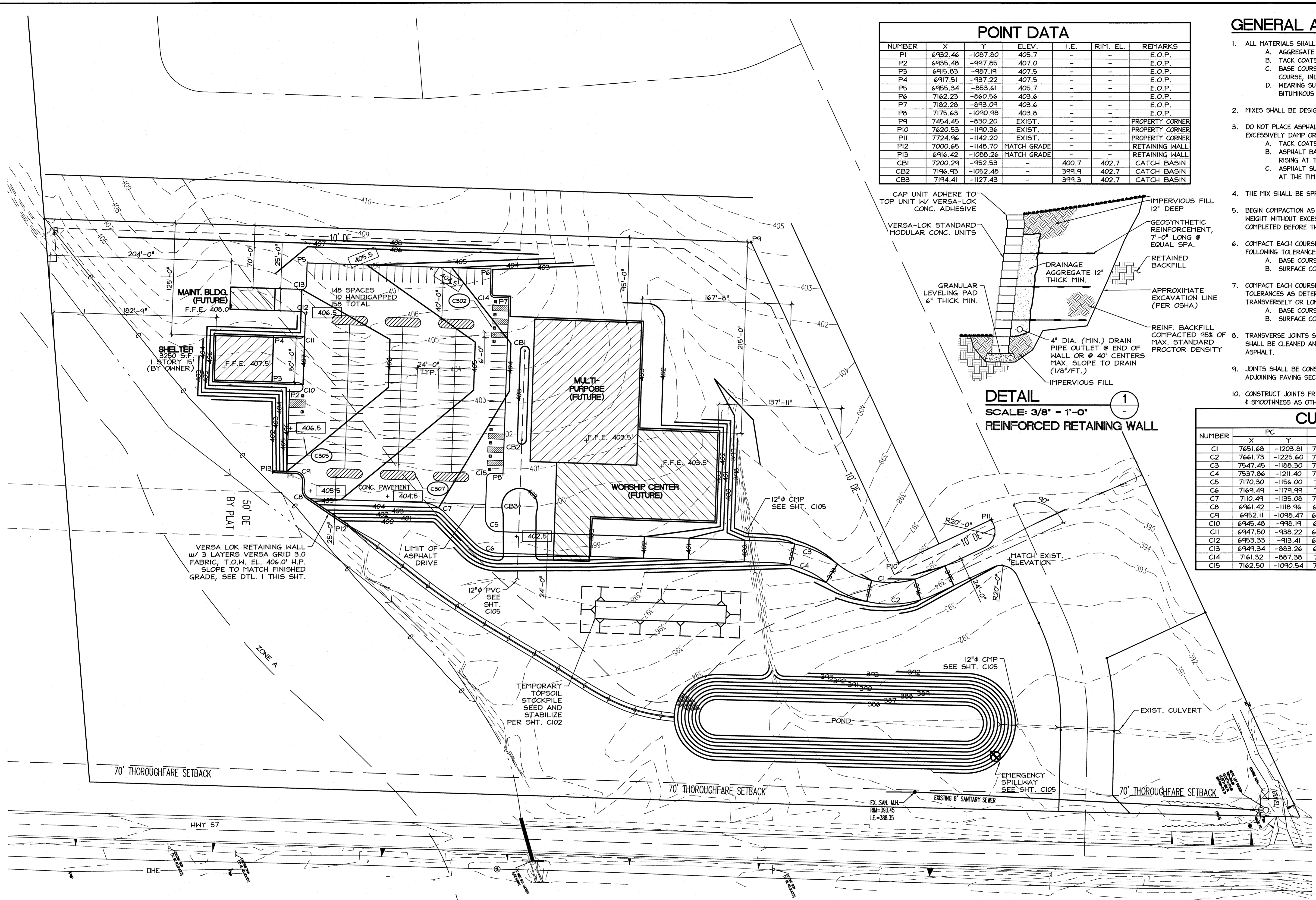
NUMBER	X	Y	ELEV.	I.E.	RIM. EL.	REMARKS
P1	6932.46	-1087.80	405.7	-	-	E.O.P.
P2	6935.48	-997.85	407.0	-	-	E.O.P.
P3	6915.83	-987.19	407.5	-	-	E.O.P.
P4	6917.51	-937.22	407.5	-	-	E.O.P.
P5	6955.34	-853.61	405.7	-	-	E.O.P.
P6	7162.23	-860.56	403.6	-	-	E.O.P.
P7	7162.28	-843.09	403.6	-	-	E.O.P.
P8	7175.63	-1040.98	403.5	-	-	E.O.P.
P9	7454.45	-830.20	EXIST.	-	-	PROPERTY CORNER
P10	7620.53	-1190.34	EXIST.	-	-	PROPERTY CORNER
P11	7724.96	-1142.20	EXIST.	-	-	PROPERTY CORNER
P12	7000.65	-1148.70	MATCH GRADE	-	-	RETAINING WALL
P13	6916.42	-1088.26	MATCH GRADE	-	-	RETAINING WALL
CB1	7200.29	-952.53	-	400.7	402.7	CATCH BASIN
CB2	7196.93	-1052.48	-	399.9	402.7	CATCH BASIN
CB3	7194.41	-1127.43	-	399.3	402.7	CATCH BASIN



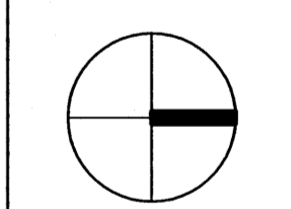
DETAIL
SCALE: 3/8" = 1'-0"
REINFORCED RETAINING WALL

CURVE DATA

NUMBER	PC		PT		R		RADIUS (FEET)
	X	Y	X	Y	X	Y	
C1	7651.68	-1203.81	7547.45	-1188.30	7611.48	-1116.63	96.0'
C2	7661.73	-1225.60	7537.86	-1211.40	7611.48	-1116.63	120.0'
C3	7547.45	-1188.30	7480.69	-1166.44	7476.52	-1290.38	124.0'
C4	7537.86	-1211.40	7479.88	-1190.43	7476.52	-1290.38	100.0'
C5	7170.30	-1156.00	7155.81	-1140.51	7170.80	-1141.01	15.0'
C6	7169.49	-1179.99	7142.91	-1168.27	7170.80	-1141.01	39.0'
C7	7110.49	-1135.08	7083.22	-1123.06	7081.87	-1163.04	40.0'
C8	6961.42	-1118.96	6951.77	-1108.63	6961.76	-1108.97	10.0'
C9	6952.11	-1098.47	6942.45	-1088.14	6942.12	-1098.13	10.0'
C10	6945.48	-998.19	6945.81	-988.20	6945.65	-993.19	5.0'
C11	6947.50	-938.22	6952.66	-933.39	6947.66	-933.23	5.0'
C12	6953.33	-913.41	6948.50	-908.24	6948.34	-913.24	5.0'
C13	6949.34	-883.26	6954.51	-878.43	6949.51	-878.26	5.0'
C14	7161.32	-887.38	7166.15	-892.55	7166.32	-887.55	5.0'
C15	7162.50	-1090.54	7157.33	-1095.37	7162.33	-1095.53	5.0'



GRADING AND PAVING PLAN
SCALE: 1" = 50'-0"



NORTH

Professional Consultants, Inc.
Evansville • Rockport
Engineering/Architecture
Construction Management
www.pcdesign.com

SITE STUDY
FIRST CHRISTIAN CHURCH
HIGHWAY 57
EVANSVILLE, INDIANA

ISSUE	DATE	DESCRIPTION
PROJECT NUMBER:	20030167.00.00	
DRAWN BY:	APA	DATE: 06/26/03
DESIGNED BY:	JWB	DATE: 06/24/03
TECH CHECKED BY:	JWB	DATE:
QC CHECKED BY:		DATE:

GRADING & PAVING PLAN

C-104
SHEET NUMBER

FOR CONSTRUCTION