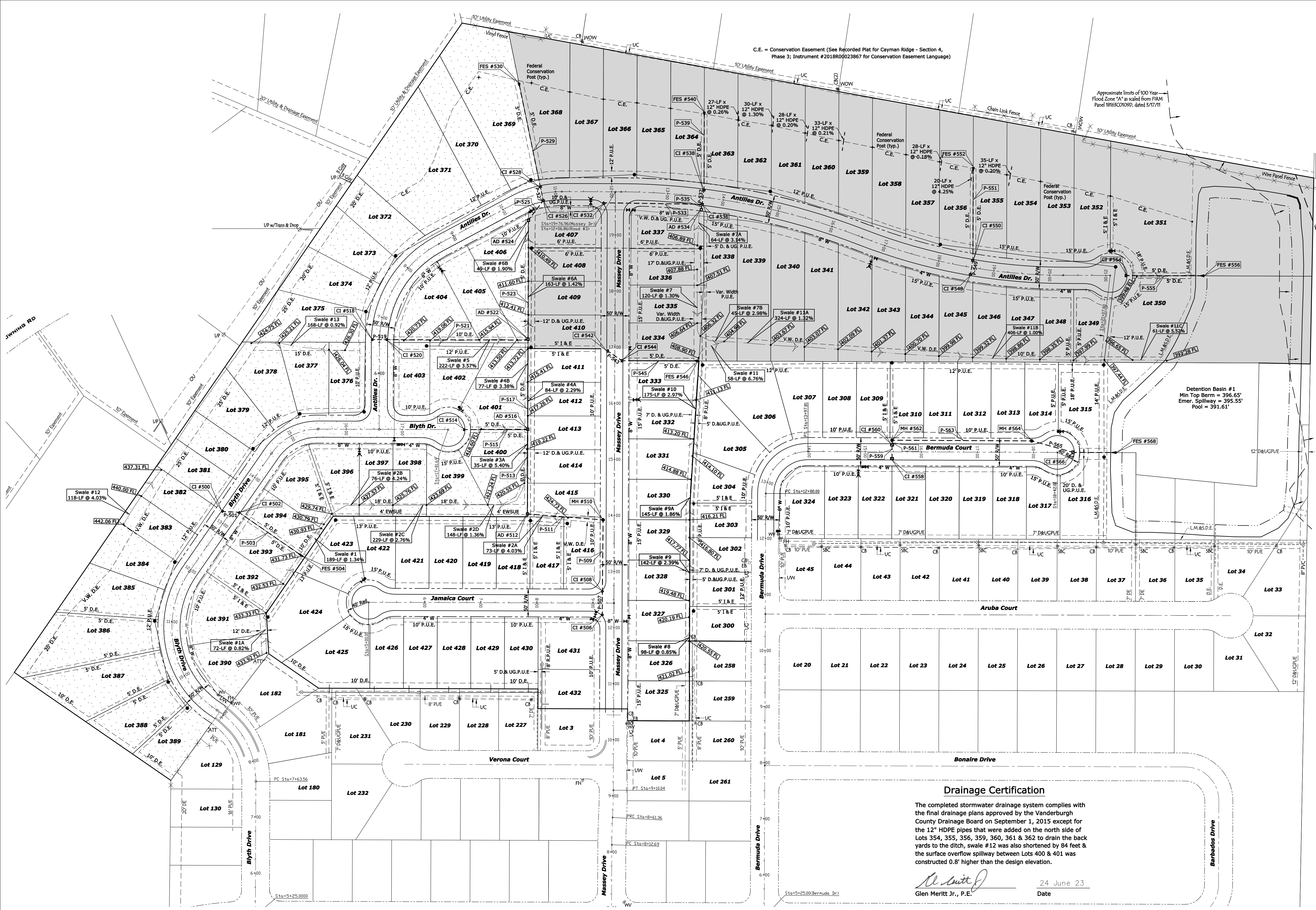


### LEGEND

- Section 4 - Ph. 3
- Section 4 - Ph. 4

Structure Number	Size	Invert Feet	Invert Elev.	Out Elev.	Run %	Run AD/MI FG = CI IE = FES Elev.
AD #524	24"	44	406.00	405.27	1.66	409.56
P-525	24"	44	406.00	405.27	1.66	409.56
CI #526	24"	26	405.27	404.50	2.96	408.69
CI #528	30"	183	404.50	403.77	0.40	408.63
P-529	30"	183	404.50	403.77	0.40	408.63
FES #530						403.75
CI #532	12"	175	403.64	402.51	0.65	405.97
P-533	12"	175	403.64	402.51	0.65	405.97
AD #534	12"	10	402.69	402.44	2.50	404.88
CI #536	12"	10	402.69	402.44	2.50	405.06
P-537	15"	26	402.44	402.20	0.92	404.97
CI #538	18"	133	402.20	401.58	0.47	401.55
P-539	18"	133	402.20	401.58	0.47	401.55
FES #540						401.55
CI #548	12"	26	399.19	399.02	0.65	401.33
P-549	12"	26	399.19	399.02	0.65	401.33
CI #550	15"	160	399.02	397.30	1.07	397.24
P-551	15"	160	399.02	397.30	1.07	397.24
FES #552						397.24
CI #554	12"	133	396.25	393.17	2.43	399.08
P-555	12"	133	396.25	393.17	2.43	399.08
FES #556						393.02
CI #500	12"	30	435.16	434.60	1.87	437.42
P-501	12"	30	435.16	434.60	1.87	437.42
CI #502	15"	129	434.60	431.74	2.21	436.87
P-503	15"	129	434.60	431.74	2.21	436.87
FES #504						431.61
CI #506	12"	42	421.29	420.86	1.02	423.84
P-507	12"	42	421.29	420.86	1.02	423.84
CI #508	15"	128	420.86	419.98	0.69	423.66
P-509	15"	128	420.86	419.98	0.69	423.66
MH #510	15"	135	419.98	418.50	1.10	422.90
P-511	15"	135	419.98	418.50	1.10	422.90
AD #512	18"	151	418.50	413.98	2.99	421.79
P-513	18"	151	418.50	413.98	2.99	421.79
CI #514	15"	114	415.04	413.98	0.93	417.30
P-515	15"	114	415.04	413.98	0.93	417.30
AD #516	24"	161	413.98	409.35	2.88	417.33
P-517	24"	161	413.98	409.35	2.88	417.33
CI #518	12"	31	410.41	410.01	1.29	418.80
P-543	12"	31	410.41	410.01	1.29	418.80
CI #544	15"	130	410.01	409.11	0.69	413.11
P-545	15"	130	410.01	409.11	0.69	413.11
FES #546						409.07



**Drainage Certification**

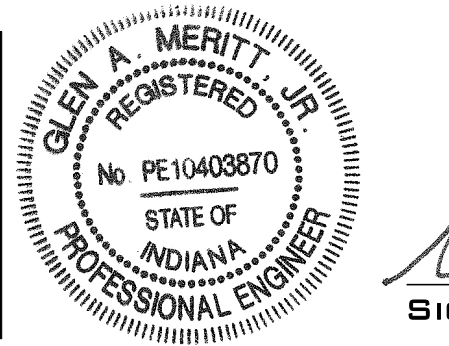
The completed stormwater drainage system complies with the final drainage plans approved by the Vanderburgh County Drainage Board on September 1, 2015 except for the 12" HDPE pipes that were added on the north side of Lots 354, 355, 356, 359, 360, 361 & 362 to drain the back yards to the ditch, swale #12 was also shortened by 84 feet & the surface overflow spillway between Lots 400 & 401 was constructed 0.8' higher than the design elevation.

*Glen Meritt Jr.* 24 June 23  
Glen Meritt Jr., P.E. Date

This drawing and/or specifications is provided as an instrument of service provided by Cash Wagner & Associates, PC and is intended for use on this project only. All drawings, specifications, designs, models, ideas, calculations, and arrangements appearing herein constitute the original and unpublished work of and remains the property of Cash Wagner & Associates, PC. Any reproduction, use or disclosure of the proprietary information contained herein without the prior written consent of the Cash Wagner & Associates, PC is strictly prohibited.

Written dimensions shown hereon shall take precedence over scaled dimensions. Contractors shall calculate and measure required dimensions. Notify Cash Wagner & Associates, PC with any variations in dimensions or conditions from those indicated on these drawings. This drawing was based on available information. Commencement of Work constitutes verification and acceptance of existing conditions.

Application of a material or equipment to Work installed by others constitutes acceptance of that Work and assumption of responsibility for satisfactory installation.



*Glen Meritt Jr.* 24 June 23  
SIGNATURE DATE

**CASH WAGNER & ASSOCIATES, PC**  
CONSULTING | ENGINEERING | SURVEYING

414 CITADEL CIRCLE SUITE B  
EVANSVILLE, IN 47715  
PH: 812.401.5561  
FAX: 812.401.5563  
CELL: 812.774.2988  
E-MAIL: GMERITT@CASHWAGNER.COM

NO.	DATE	BY	DESCRIPTION

PROJECT NO: 14-1948	PROJECT: CAYMAN RIDGE-SECT. 4, PH. 3 & 4	DATE: 06.24.23
DESIGNED BY: G.A.M.	ADDRESS: KANSAS ROAD EVANSVILLE, INDIANA	DRAWING NO.: C-101
DRAWN BY: A.W.W.	SHEET TITLE: DRAINAGE PLAN RECORD DRAWING	OF:
FILENAME: 1948 base overall RECORD		
LAYOUT TAB: DRAINAGE 4-3		
SCALE: As Shown		