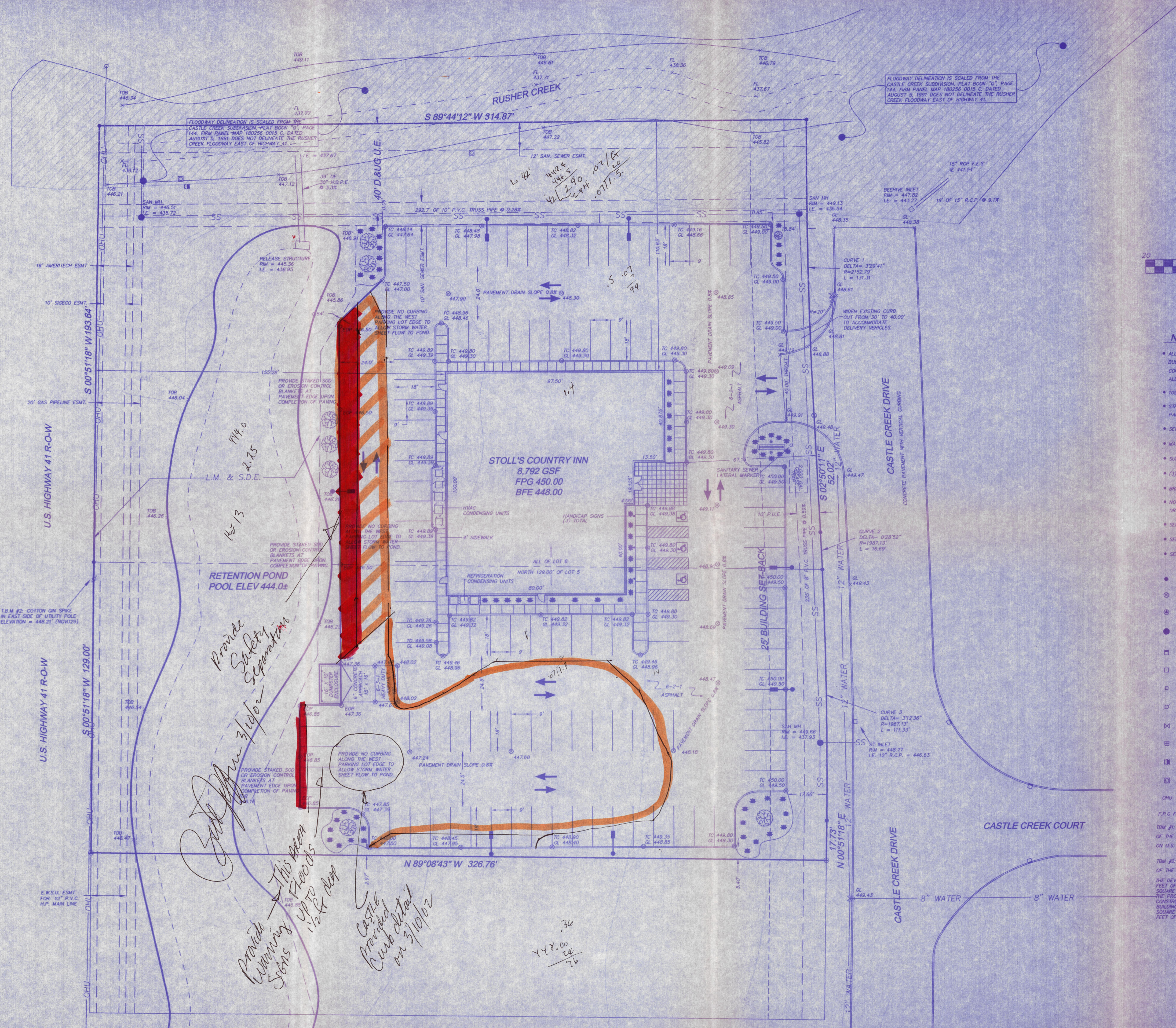


Scale 1" = 20'

NOTES:

- ALL LIGHT POLES ARE TO BE 30' TALL EQUIPPED W/ 1000 W BULBS (7) REQUIRED. BASES BY CONCRETE CONTRACTOR CONTROLLED BY TIMER, ON AT 3:00 P.M. & OFF AT 12:00 A.M. ALL EXTERIOR LIGHTS TO BE TIED INTO THIS TIMER.
 - 108 PARKING SPACES AVAILABLE.
 - STRIPING TO BE PAINTED 2-COATS WHITE. DO NOT PAINT DIRECTIONAL ARROWS.
 - SEWER & WATER UTILITIES ARE EXISTING.
 - MAIN ELECTRICAL UTILITY BY OWNER / DEVELOPER.
 - SURVEYING & DRAINAGE PLANS BY ANDY EASLEY ENGINEERING.
 - (3) HANDICAP POLE SIGNS ARE REQUIRED.
 - BRICK MONUMENT SIGN BY G.C. / LETTERING BY TENANT.
 - NO WORK TO TAKE PLACE WITHIN NORTH FLOODWAY OR WEST DRAINAGE EASEMENTS UNLESS AUTHORIZED IN WRITING BY CASTLE CONSTRUCTION.
 - SEE UTILITY PLAN FOR LOCATIONS OF SEWER, WATER, ELECTRICAL & PHONE LINES.
 - SEE LANDSCAPE PLAN FOR ACTUAL DESIGN & DETAILS.
 - SEE DUMPSTER & SIGN PLANS FOR ACTUAL DESIGN & DETAILS.
 - 3/4" REBAR WITH BLA 0030 CAP FOUND
 - CHISELED "X" FOUND
 - 5/8" IRON ROD WITH EASLEY 5000B CAP SET
 - SANITARY SEWER MANHOLE
 - STORM SEWER CURB INLET
 - STORM SEWER BEEHIVE INLET
 - TELEPHONE PEDESTAL
 - UTILITY POLE
 - WATER VALVE
 - WATER METER
 - GAS VALVE
 - GAS PIPELINE MARKER
 - OHU OVERHEAD UTILITIES
- F.P.C. FLOOD PROTECTION GRADE
- TCM #1: ELEVATION = 450.77' CHISELED SQUARE ON THE SOUTHWEST CORNER OF THE NORTHEAST HEADWALL OF THE BRIDGE OVER RUSHER CREEK ON U.S. HIGHWAY 41, ESTABLISHED BY BERNARDIN LOCHMUEHLER & ASSOC.
- TCM #2: ELEVATION = 448.21' COTTON GIN SPIKE IN THE EAST SIDE OF THE UTILITY POLE AT THE PROPERTY LINE AND HIGHWAY 41 R-O-W
- THE DEVELOPED SITE CONTAINS ALL OF LOT 6 AND THE NORTH 129 FEET OF LOT 5 OF THE CASTLE CREEK SUBDIVISION, TOWN OF DELTA, SQUARE FEET OR 2.402 ACRES TOTAL, 80,823.01 SQUARE FEET OF THE PROPERTY LIES WITHIN DEVELOPABLE LAND. PROPOSED FINISHED CONSTRUCTION YIELDS THE FOLLOWING TOTAL: 8,792 SQUARE FEET OF BUILDING AREA, 45,632 SQUARE FEET OF PAVEMENT, AND 6,399.01 SQUARE FEET OF LANDSCAPE LAWN AREA OF THE 60,823.01 SQUARE FEET OF DEVELOPED PROPERTY.



Provide Safety Separation

Provide Warning Signs

Castle Creek Detail on 3/10/02

3/6

448.00

24

76

ANDY EASLEY ENGINEERING
 CIVIL ENGINEERING (812) 424-2481 LAND SURVEYING
 1153 WEST MILL ROAD EVANSVILLE, INDIANA 47710

STOLLS COUNTRY INN - GRADING PLAN
CASTLE CONSTRUCTION
 19820 CASTLE CREEK DRIVE
 VANDERBURGH CO., IN

SHEET NO.	DATE:	DRAWN BY:
1 OF 1	05-30-02	JMS
	PROJECT NO.:	CHECKED BY:
	7375	RAE
	REVISIONS:	SCALE:
		1" = 20'