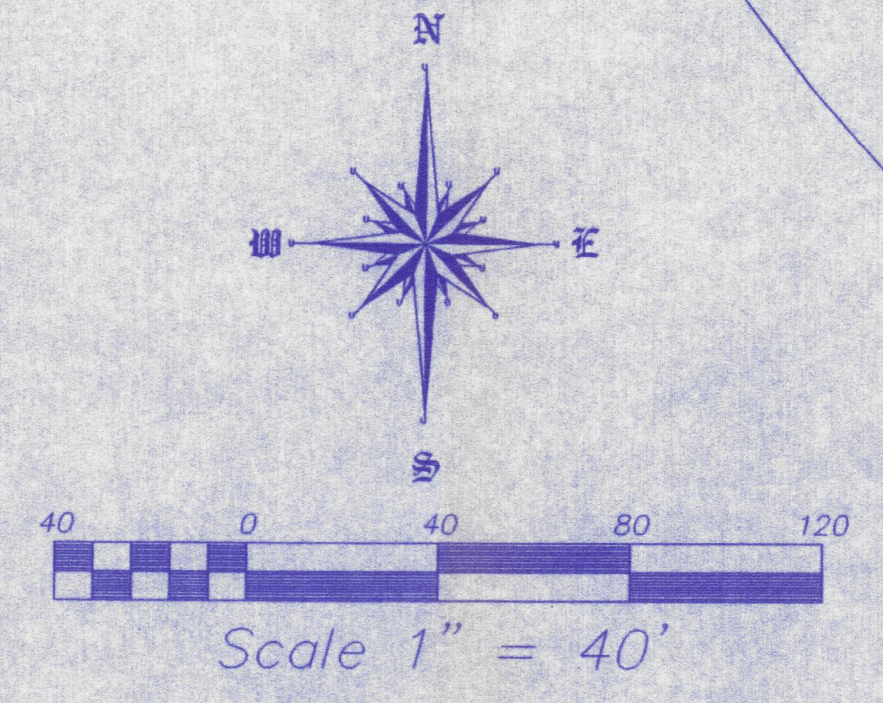


- GENERAL NOTES**
1. ALL UNITS ARE 2 BEDROOM CONDOMINIUMS.
  2. TWO (2) 4 UNIT BUILDING, THREE (3) 8 UNIT BUILDINGS, AND ONE (1) 8 UNIT BUILDING ARE PROPOSED FOR PHASE I
  3. 34 UNITS TOTAL
  4. PARKING REQUIREMENTS 28 STALLS  
34 GARAGE PARKING STALLS FOR TENANTS  
65 STRIPED PARKING STALLS FOR VISITOR PARKING  
99 TOTAL PARKING STALLS PROVIDED
  5. ALL STALLS ARE 9' X 10'
  6. ALL TRAVEL WAYS ARE A MINIMUM 24' WIDE
  7. ALL SIDEWALKS ARE 4' WIDE
  8. BUILDINGS 2, 4 & 6 SHALL HAVE DOWNSPOUTS DIRECTED TO THE ROADWAY OF BRICKYARD COURT AND NOT MIDDLE MOUNT VERNON ROAD AT THE SOUTH END OF THOSE BUILDINGS.



**BOUNDARY LINE TABLE**

C1 N 27°25' E	114.00
F1 N 65°23' 05" W	111.52
G1 N 69°10' 06" W	29.92
D1 N 69°17' 25" W	30.36
C1 N 22°08' 46" W	123.24
B1 N 78°17' 36" W	28.57
A1 N 83°28' 07" W	123.52



**ANDY EASLEY ENGINEERING**  
 CIVIL ENGINEERING (812) 424-2481 LAND SURVEYING  
 1133 WEST HILL ROAD EVANSVILLE, INDIANA 47710

**STREET & DRAINAGE PLANS**  
**BRICKYARD CONDOMINIUMS**  
 3615 UPPER MT. VERNON RD  
 EVANSVILLE, IN

DATE: 05-25-04	DRAWN BY: JKS
PROJECT NO: 7809	CHECKED BY: RAE
REVISIONS: JKS 08-17-04	SCALE: 1" = 40'

SHEET NO. **1 OF 4**

C:\PROJ\CD\PROJECTS\7809\BRICKYARD.DWG Thu Aug 24 03:55:40 2004 COPYRIGHT ANDY EASLEY ENGINEERING, INC.