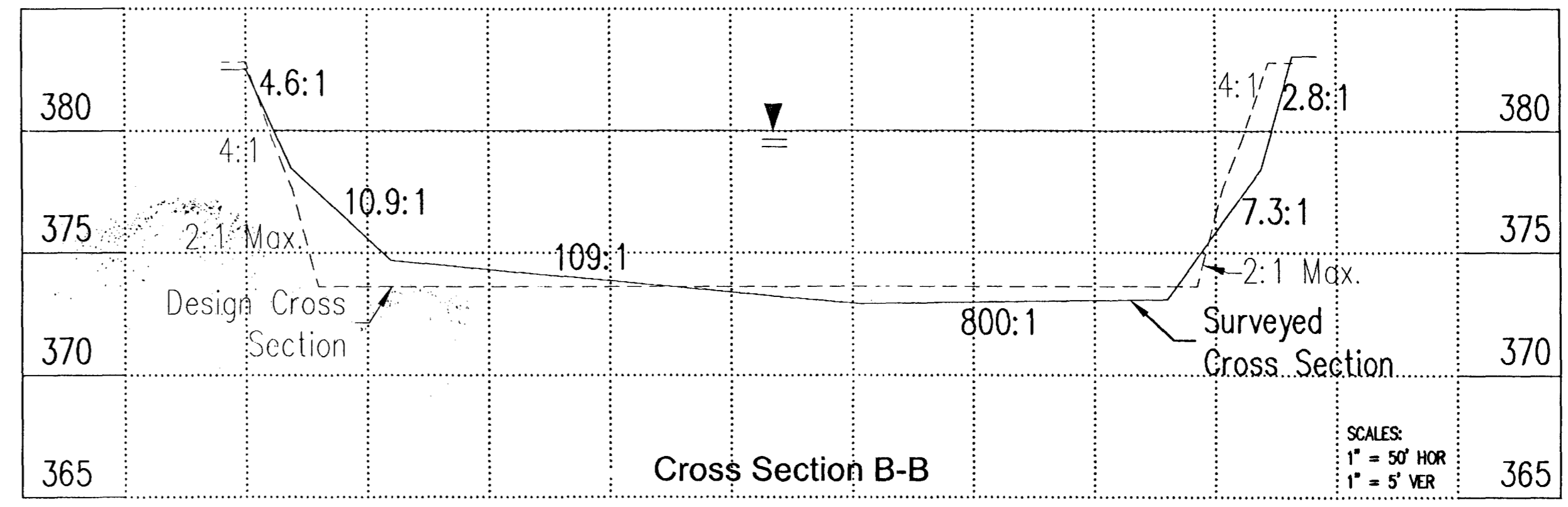
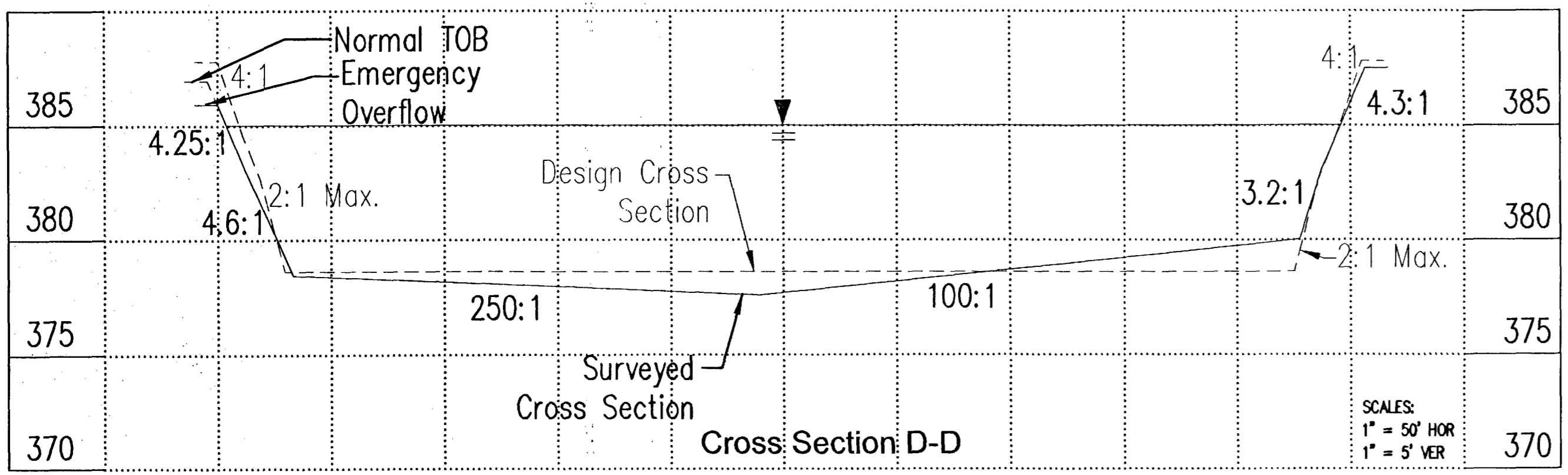
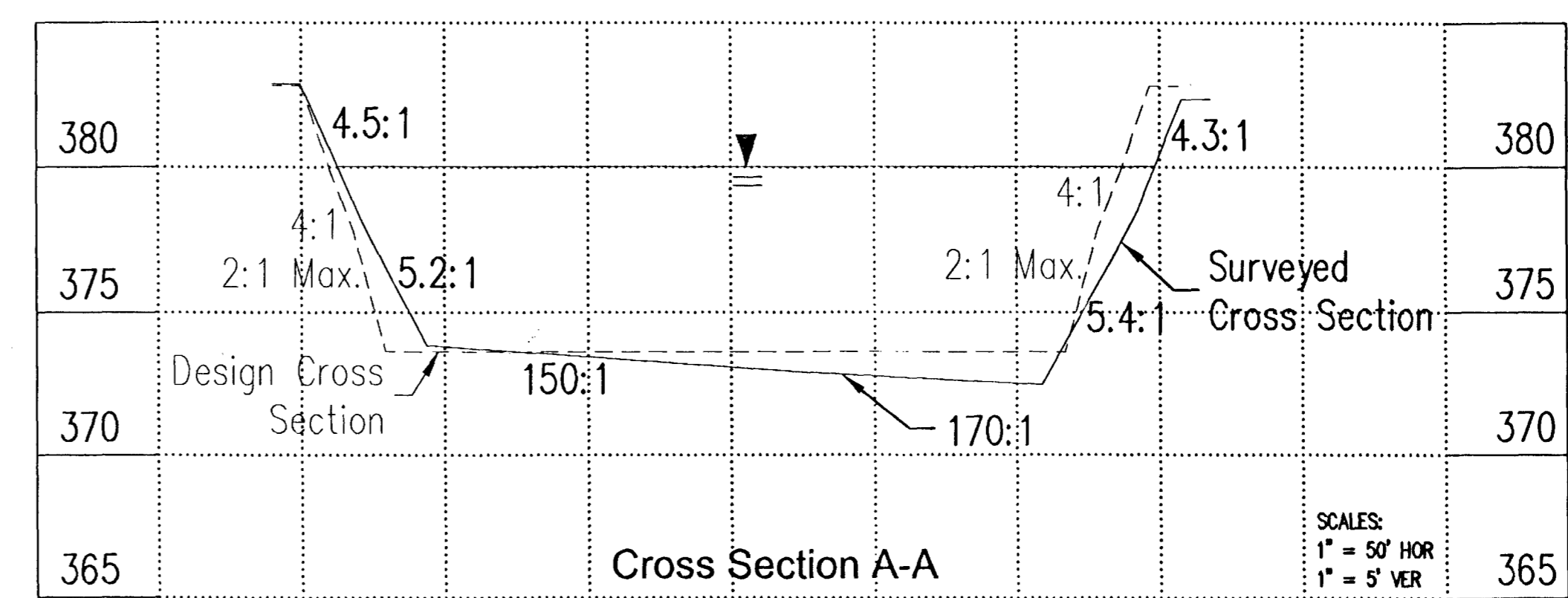
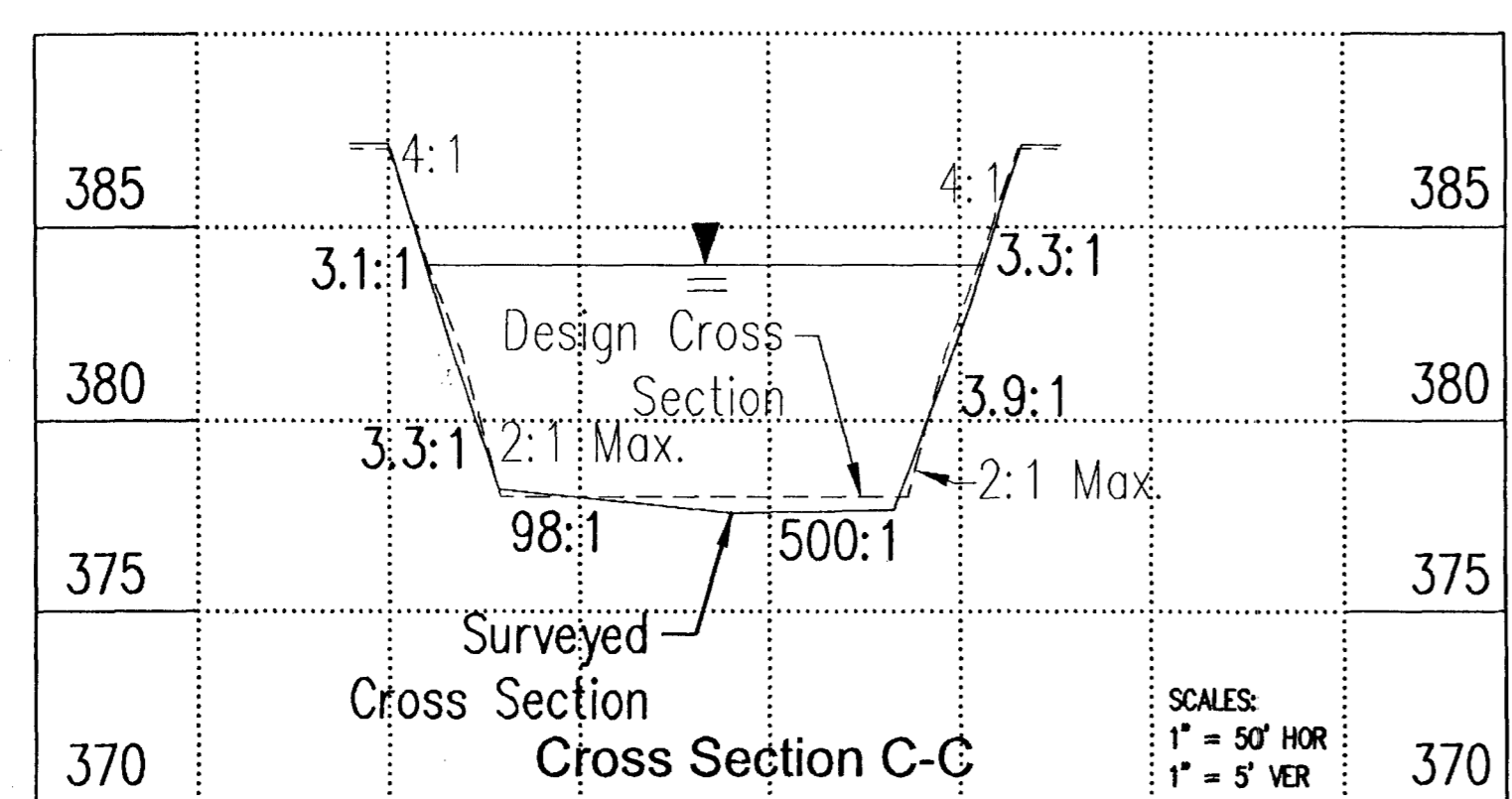
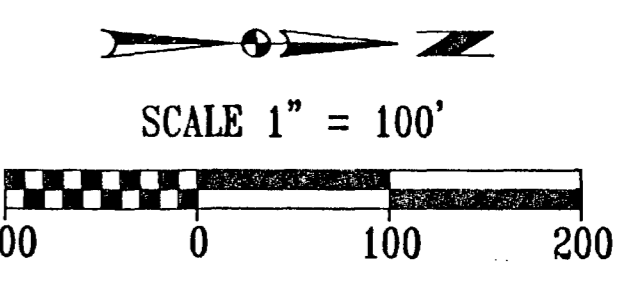
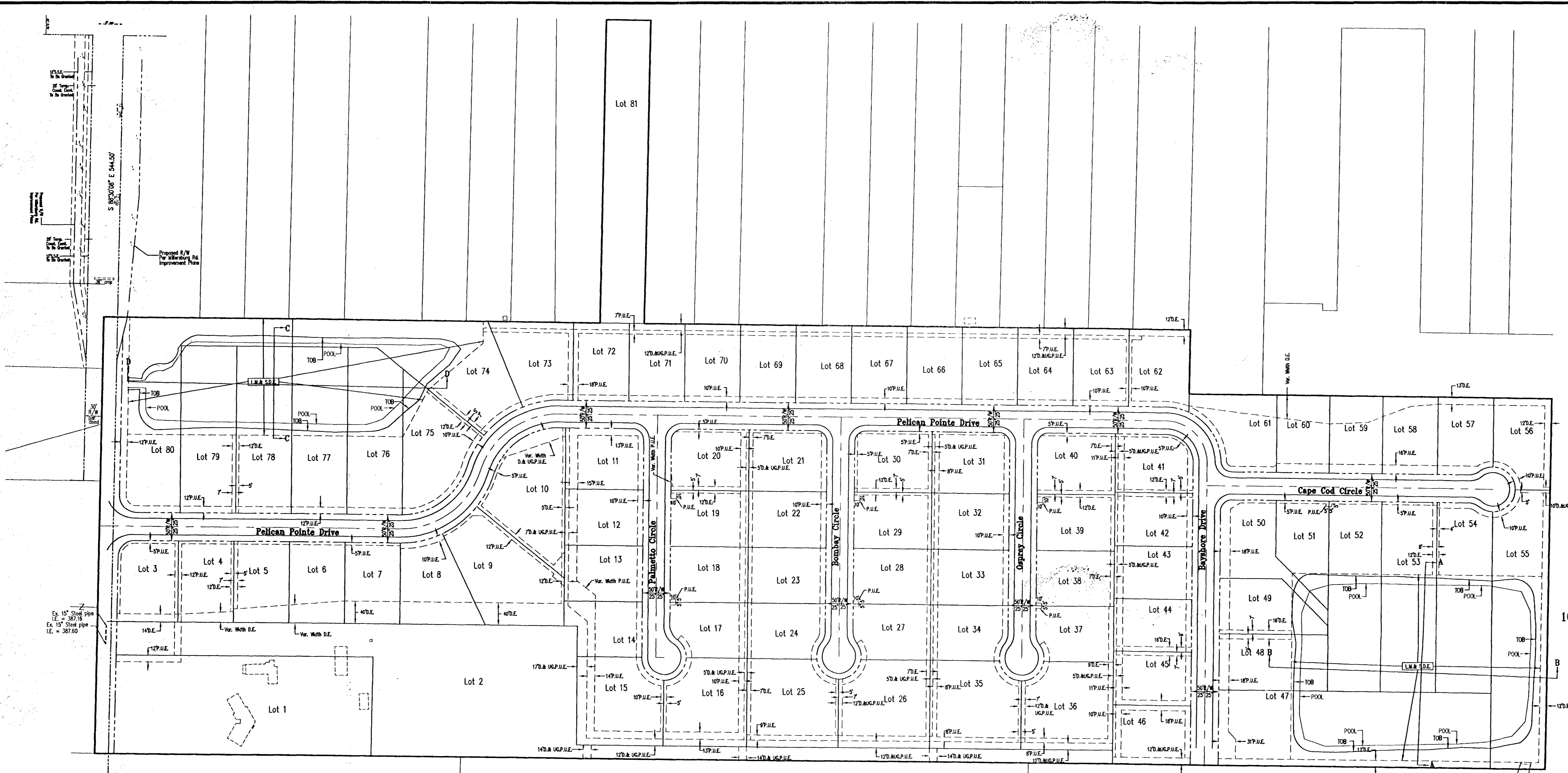


FILE = R:\9111\CIVILAS-BUILD\9111 RECORD INFRA.DWG PLOTTED = 10/16/07 9:15 A.M.



Engineering  
Surveying  
Architecture  
Construction Management

**Morley and Associates Inc.**

Evansville, IN  
(812) 464-9885  
Henderson, KY  
(270) 851-0300 (812) 634-8990

www.morleyandassociates.com

All ideas, designs, calculations, and arrangements indicated or represented by the drawings are owned by and are the property of Morley and Associates, Inc. and its subsidiaries. No part of these drawings shall be reproduced, stored in a retrieval system, or transmitted in any form or by any means, electronic, mechanical, photocopying, recording, or by any information storage and retrieval system, without the prior written permission of Morley and Associates, Inc. The user of these drawings shall be held responsible for all dimensions and conditions shown on these drawings. Any use of these drawings for any purpose other than that intended by the engineer and the architect shall be at the user's risk.

No.	By	Date	Description

**JAMES E. MORLEY**  
REGISTERED  
No. 101002500  
STATE OF  
INDIANA  
PROFESSIONAL ENGINEER

11-16-07

Blue Heron Development, LLC  
Blue Heron Estates

**Basin Cross Sections  
RECORD DRAWING**

Scale: 1" = 50' Horiz.  
1" = 5' Vert.

Designed By: JEM Job Number: 5911-4(B)  
Drawn By: BSH Date: 10/16/07

Sheet Number:  
**Rec-3A**

Reference: John Sobell  
Oct 19, 2007