



BERNARDY-LOCHMULLER & ASSOCIATES, INC.
REGISTERED PROFESSIONAL ENGINEERS
17000 Highway 41 N
Louisville, KY 40298
TEL 502.498.1100 FAX 498.1101

studio kremer architects
3286 Ruckelshaus Parkway, Louisville, KY 40298
TEL 502.498.1100 FAX 498.1101

LOG IN and FILE - Plan Approved
RECEIVED BY THE CITY ENGINEERING OFFICE
MAY 17 2007

① HIGHWAY 41 DEVELOPMENT
② BRAMCO, INC. SITE DEVELOPMENT OF THE NORTHERN 18.34 ACRES
③ BRANDIS MACHINERY & SUPPLY CO. EVANSVILLE, IN
④ LAND SURVEYOR'S CERTIFICATE

Grading Plan
NEW BUILDING for
BRANDIS MACHINERY & SUPPLY CO.
EVANSVILLE, IN

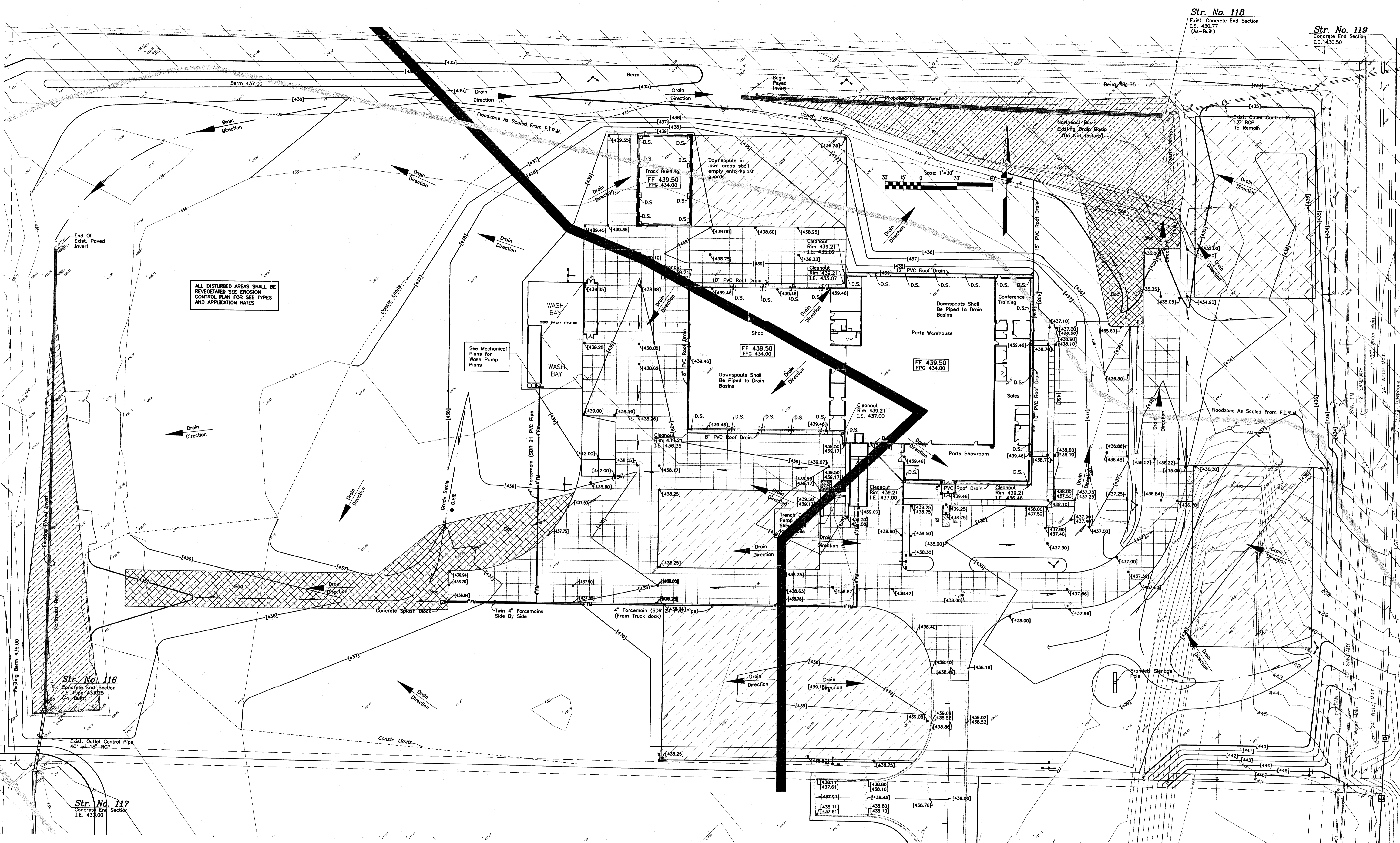
DRAWN BY: RMY
CHECKED BY: ---
REVISIONS:
Revised Contouring 3/18/08
Rev. Conts. Add Roof Drains
DATE: 4/16/08

0746

C1.1

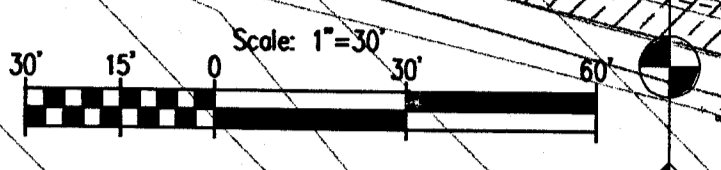
Str. No. 118
Exist. Concrete End Section
I.E. 430.77
(As-Built)

Str. No. 119
Concrete End Section
I.E. 430.50



ALL DISTURBED AREAS SHALL BE REVEGETATED SEE EROSION CONTROL PLAN FOR SEE TYPES AND APPLICATION RATES

See Mechanical Plans for Wash Pump Plans



General Notes

- All down spout drains shall be emptied at grade.
- All down spout shall have pipe turnouts at base of down spout pipe and discharge onto splash blocks.
- All work including splash blocks shall be installed by building contractor.
- Excess dirt shall be pulled away from building and all final grading against building shall direct storm water runoff away from building.
- 5 S.Y.S. of sod shall be placed at each splash block outlet by landscape contractor.
- Site contractor shall provide an alternate price to add 8" and 10" down spout piping run along face of building and to provide a 10" outlet pipe run as shown on drawing. Alternate bid pricing shall include factory wyes, fittings, and down spout boots.

TBM's

TBM#1: North head bolt of fire hydrant, east side of Boyle Lane in front of INDOT maintenance garage
Elevation= 443.01

TBM#2: Railroad spike in west face of power pole #80/114, approximate eastern right-of-way of US 41 northeast of site.
Elevation=432.52

RECEIVED
APR 16 2008
SITE REVIEW