

N 994,000

N 993,000

N 992,000

N 991,000

N 990,000

E 2,772,000

E 2,773,000

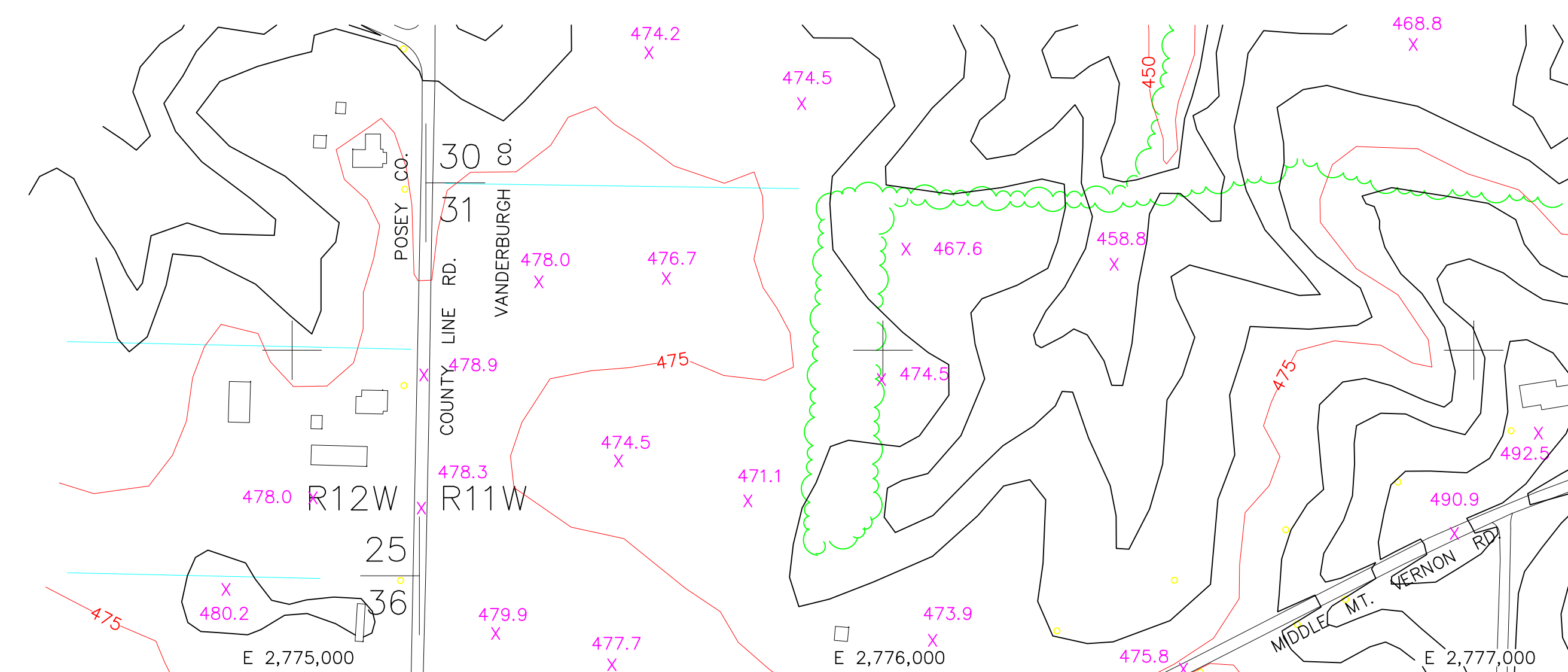
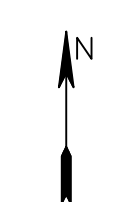
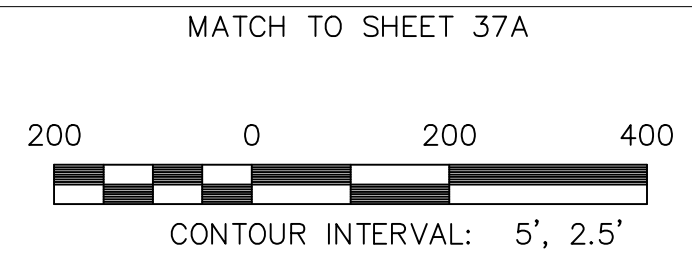
E 2,774,000

E 2,775,000

E 2,776,000

E 2,777,000

DIGITAL MAPPING WAS PREPARED BY ATLANTIC AERIAL SURVEYS IN COOPERATION WITH MORLEY AND ASSOCIATES OF EVANSVILLE, INDIANA. THIS MAP WAS GENERATED BY PHOTOGRAMMETRIC METHODS UTILIZING AERIAL PHOTOGRAPHY DATED 3-27-90, AND COMPLIES WITH NATIONAL MAP ACCURACY STANDARDS. INDIANA STATE PLANE COORDINATE SYSTEM, WEST ZONE AND NORTH AMERICAN DATUM 1983 WAS THE BASIS FOR THE GPS MAPPING CONTROL NETWORK.



THIS MAP IS THE PROPERTY OF THE CITY OF EVANSVILLE, INDIANA AND VANDERBURGH COUNTY, INDIANA. THIS MAP CAN NOT BE REPRODUCED UNLESS PERMISSION IS GRANTED BY THE AREA PLAN COMMISSION OR THE VANDERBURGH COUNTY SURVEYOR'S OFFICE.

SEC. 31 - T6S - R11W
TOPOGRAPHIC MAP
SHEET 37B OF 317

MATCH TO SHEET 37C