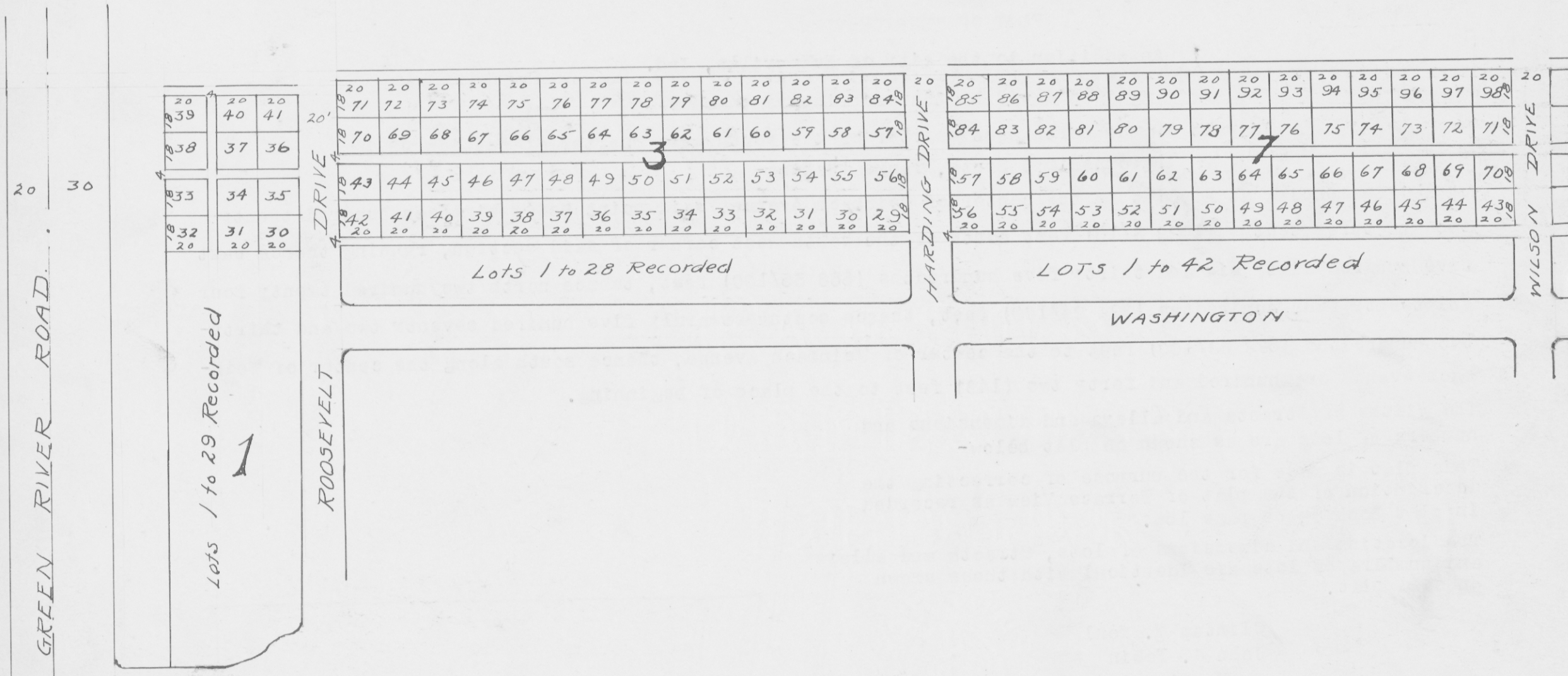


FIRST PARK LAWN

12



#31384 ✓

Scale 1" = 40 Ft.

Beginning at a point on the west line of section thirty-six (36), six (6), ten (10). Six and sixty seven (6.67) hundredths chains and one half ($\frac{1}{2}$) rods north of this south west corner of southwest quarter of the northwest quarter of section thirty-six (36) township (6+10) thence north ninety-six (96) feet; thence east one thousand three hundred and twenty nine and nine tenths (1329.9) feet; thence south ninety six (96) feet; thence west to place of beginning.

State of Indiana, Vanderburgh Co ss:

Before me the undersigned, a notary public in and for the aforesaid Co. & State this _____ day of _____ 1926 personally appeared Lee Smith as Pres. & Nora Smith as Sec'y of the Parklawn Cem. Co. and acknowledged the execution of this plat.

Parklawn Cemetery Co.
Lee Smith, Pres.
Nora A. Smith, Sec'y.

WITNESS my hand and official seal this 21st day of Dec. 1926.

My commission expires Jan. 9-1929.

RECORDED.....DECEMBER.....22, 1926

Henry Barker R. V. C.

W. O. Bohannon
(Seal)

R. W. Meisinger, Engineer.

ADDITION CEMETERY.

WILSON DRIVE

20	20	20	20	20	20	20	20	20	20	20	20	20	20	20
99	100	101	102	103	104	105	106	107	108	109	110	111	112	113
98	97	96	95	94	93	92	91	90	89	88	87	86	85	84
71	72	73	74	75	76	77	78	79	80	81	82	83	84	85
70	69	68	67	66	65	64	63	62	61	60	59	58	57	56
20	20	20	20	20	20	20	20	20	20	20	20	20	20	20

Lots 1 to 56 Recorded

DRIVE

TAFT DRIVE

20	20	20	20	20	20	20	20	20	20	20	20	20	20	20
66	67	68	69	70	71	72	73	74	75	76	77	78	79	80
65	64	63	62	61	60	59	58	57	56	55	54	53	52	51
40	41	42	43	44	45	46	47	48	49	50	51	52	53	54
39	38	37	36	35	34	33	32	31	30	29	28	27	26	25
20	20	20	20	20	20	20	20	20	20	20	20	20	20	20

Lots 1 to 26 Recorded

McKINLEY DRIVE

