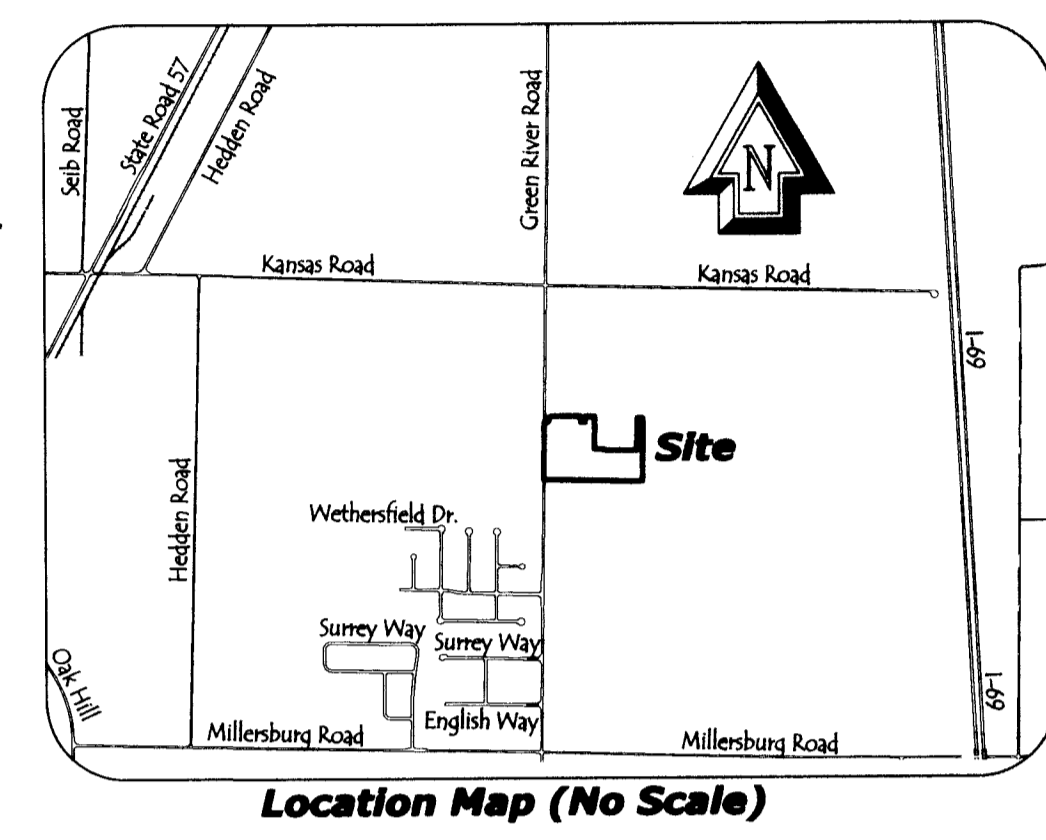


WYNNFIELD SUBDIVISION SECTION 7

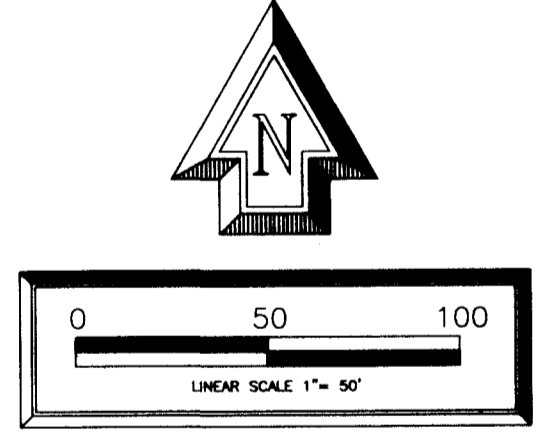
Northwest Corner
N.W. 1/4, N.W. 1/4
Section 25, T5S, R10W
Found PK Nail
0.03' West & 0.07' South
of the calculated corner
Shown to be a PK Nail on
the prior plat for Wynnfield

Southeast Corner
N.W. 1/4, N.W. 1/4
Section 25, T5S, R10W
Found Hoffman Cap
0.24' West & 0.03' South
of the calculated corner



See Sheet 3 of 3 for dimensions of the isolated P.U.E.'s (Public Utility Easements). These Easements are typically shown as the cross-hatched areas in the exhibit to the left.

The Hatched Area is the remainder of a Temporary Storm Drainage Easement as recorded in Document 20190000970. According to this document the easement will no longer be in effect once it is platted into a subdivision and any facilities for which the temporary easement was created are dedicated on the new subdivision plat with a similar type easement. Therefore, the recording of this plat, Wynnfield Section 7, along with the dedication of the Conservation Easement eliminates the Temporary Easement.



Curve Table

NUMBER	C-1	C-2
DELTA ANGLE	90°00'00"	90°00'00"
CHORD DIRECTION	S 44°12'19" E	N 45°47'41" E
TANGENT	20.00	20.00
RADIUS	20.00	20.00
ARC LENGTH	31.42	31.42
CHORD LENGTH	28.28	28.28

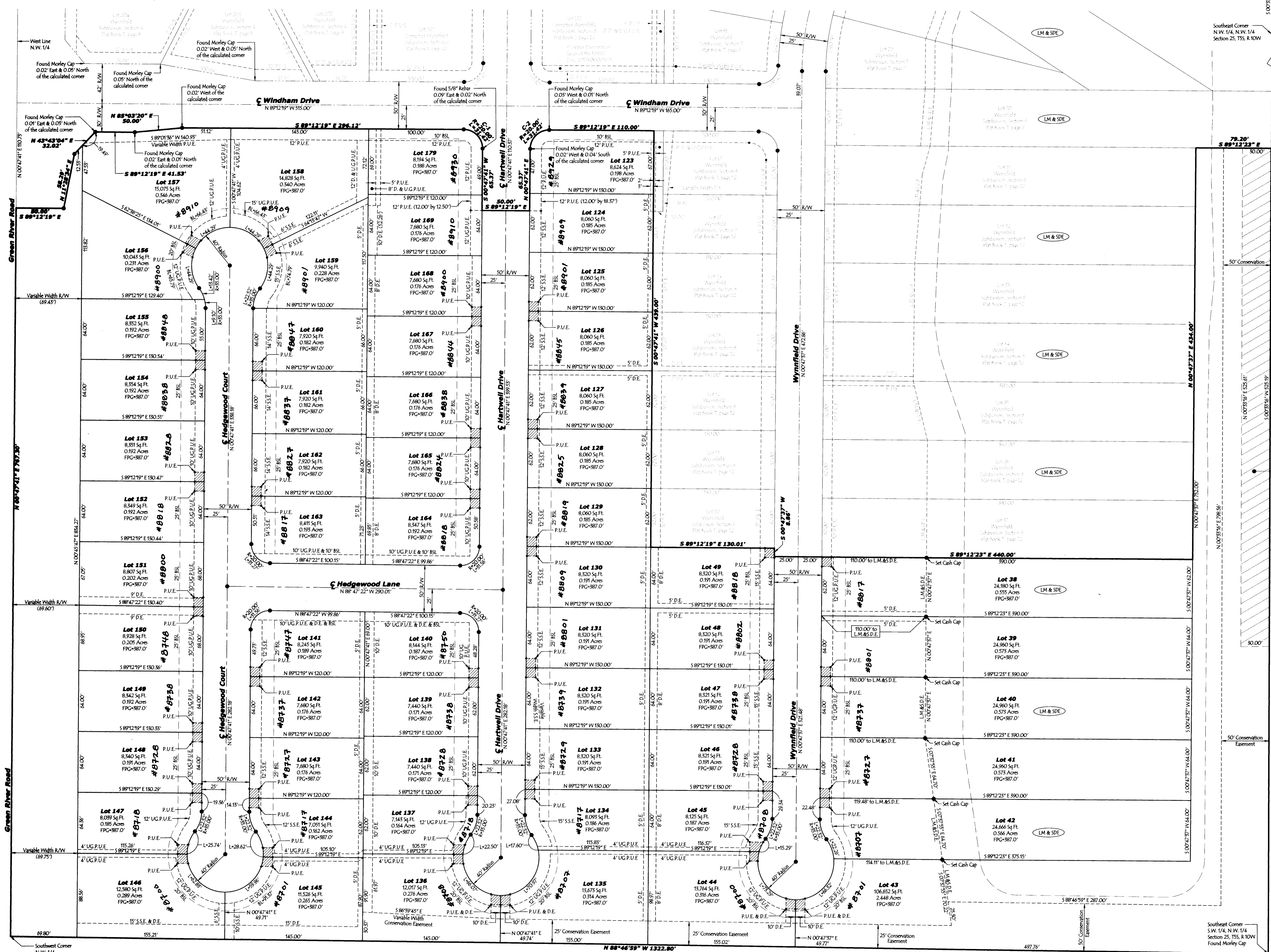
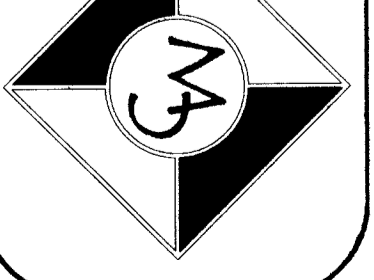


Signature

414 CHATEL CIRCLE
SUITE B
EVANVILLE, IN 47715
PH: 812.401.5561

332 THIRD AVENUE
SUITE 13
JASPER, IN 47546
PH: 812.634.8015

CASH WAGNER & ASSOCIATES, P.C.
CONSULTING ENGINEERS - LAND SURVEYORS
WWW.CASHWAGNER.COM



Southwest Corner
N.W. 1/4
Section 25, T5S, R10W
Found Railroad Spike
in Monument Box
(Use this Survey)

Southeast Corner
S.W. 1/4, N.W. 1/4
Section 25, T5S, R10W
Found Morley Cap