

# The Hills Section 2

Line	Bearing	Distance
L-1	N 81°10'23" W	58.00'
L-2	N 81°10'23" W	50.00'
L-3	N 81°10'23" W	55.00'

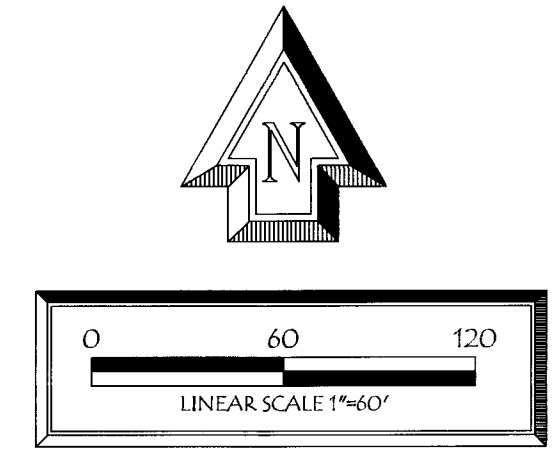
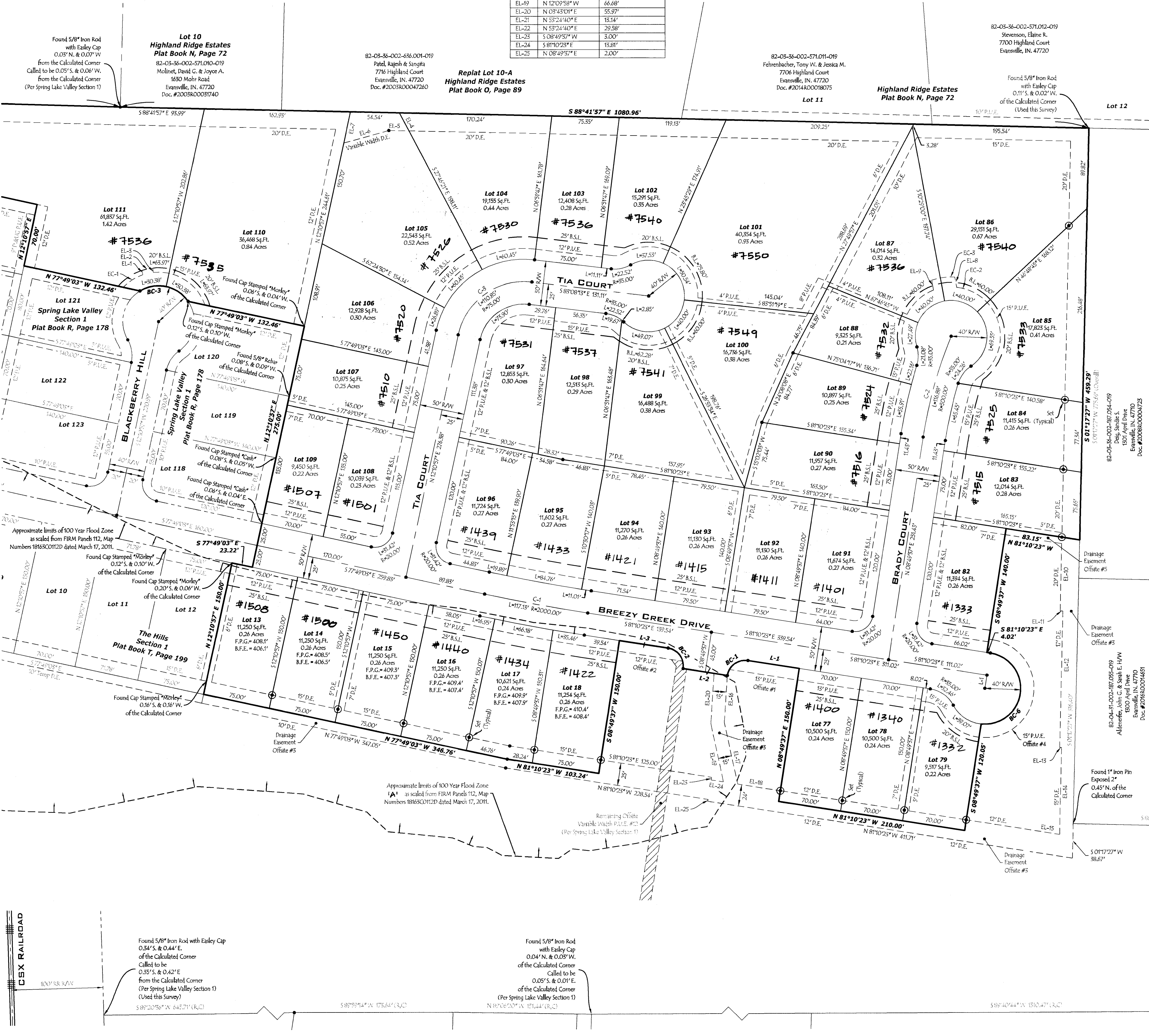
Curve	Radius	Delta Angle	Chord Bearing	Chord Length	Tangent	Arc Length
BC-1	20.00'	90°00'00"	S 53°49'37" W	28.28'	20.00'	31.42'
BC-2	20.00'	90°00'00"	N 36°10'23" W	28.28'	20.00'	31.42'
BC-3	40.00'	87°01'17"	N 77°49'03" W	55.08'	37.97'	60.75'
BC-4	100.00'	22°26'58"	N 12°45'13" E	38.93'	19.85'	39.18'
BC-5	20.00'	89°47'52"	N 46°25'40" E	28.23'	19.93'	31.35'
BC-6	40.00'	177°09'41"	S 07°24'28" W	79.98'	1614.49'	123.68'

Line	Bearing	Distance
EL-1	N 12°09'58" W	5.03'
EL-2	N 77°40'55" E	12.00'
EL-3	S 12°19'25" E	5.03'
EL-4	S 27°40'21" E	22.88'
EL-5	N 88°45'57" W	22.85'
EL-6	S 74°56'40" W	52.25'
EL-7	N 10°10'57" E	85.84'
EL-8	N 10°29'00" W	11.41'
EL-9	S 10°29'00" E	11.41'
EL-10	S 07°17'27" W	78.49'
EL-11	S 88°42'55" E	5.00'
EL-12	S 07°17'27" W	151.38'
EL-13	S 88°42'55" E	2.00'
EL-14	S 07°17'27" W	96.62'
EL-15	N 88°10'23" W	105.41'
EL-16	S 03°43'01" W	133.90'
EL-17	S 12°09'58" E	70.38'
EL-18	N 88°10'23" W	48.11'
EL-19	N 12°09'58" W	66.68'
EL-20	N 03°43'01" E	58.97'
EL-21	N 53°24'40" E	18.54'
EL-22	N 53°24'40" E	29.58'
EL-23	S 08°49'57" W	3.00'
EL-24	S 88°10'23" E	15.81'
EL-25	N 08°49'57" E	2.00'

Line	Bearing	Distance
L-1	S 08°49'57" W	15.00'

Curve	Radius	Delta Angle	Chord Bearing	Chord Length	Tangent	Arc Length
EC-1	55.00'	27°25'51"	N 57°42'53" E	26.05'	18.41'	26.30'
EC-2	55.00'	40°23'00"	N 55°22'45" W	37.97'	20.25'	58.77'
EC-3	66.00'	32°44'40"	S 82°10'27" W	26.03'	15.27'	26.20'

Curve	Radius	Delta Angle	Chord Bearing	Chord Length	Tangent	Arc Length
C-1	23000.00'	3°27'20"	S 79°29'48" E	107.21'	58.58'	107.33'
C-2	5000.00'	15°25'58"	N 15°11'26" E	116.62'	58.71'	116.88'
C-3	75.00'	84°40'51"	N 54°51'22" E	101.05'	68.54'	110.85'



Descriptions:  
 P.O.C. - Point of Commencement  
 P.O.B. - Point of Beginning  
 R/W - Right of Way  
 B.S.L. - Building Setback Line  
 P.U.E. - Public Utility Easement  
 D.E. - Drainage Easement

U-93

## Sheet 2 of 2

**CASH WAGGNER & ASSOCIATES, P.C.**  
 414 CITADEL CIRCLE SUITE B  
 EVANSVILLE, IN 47715  
 PH: 812.401.5561

216 W. SIXTH STREET SUITE 1105  
 JASPER, IN 47546  
 PH: 812.634.5015

WWW.CASHWAGGNER.COM