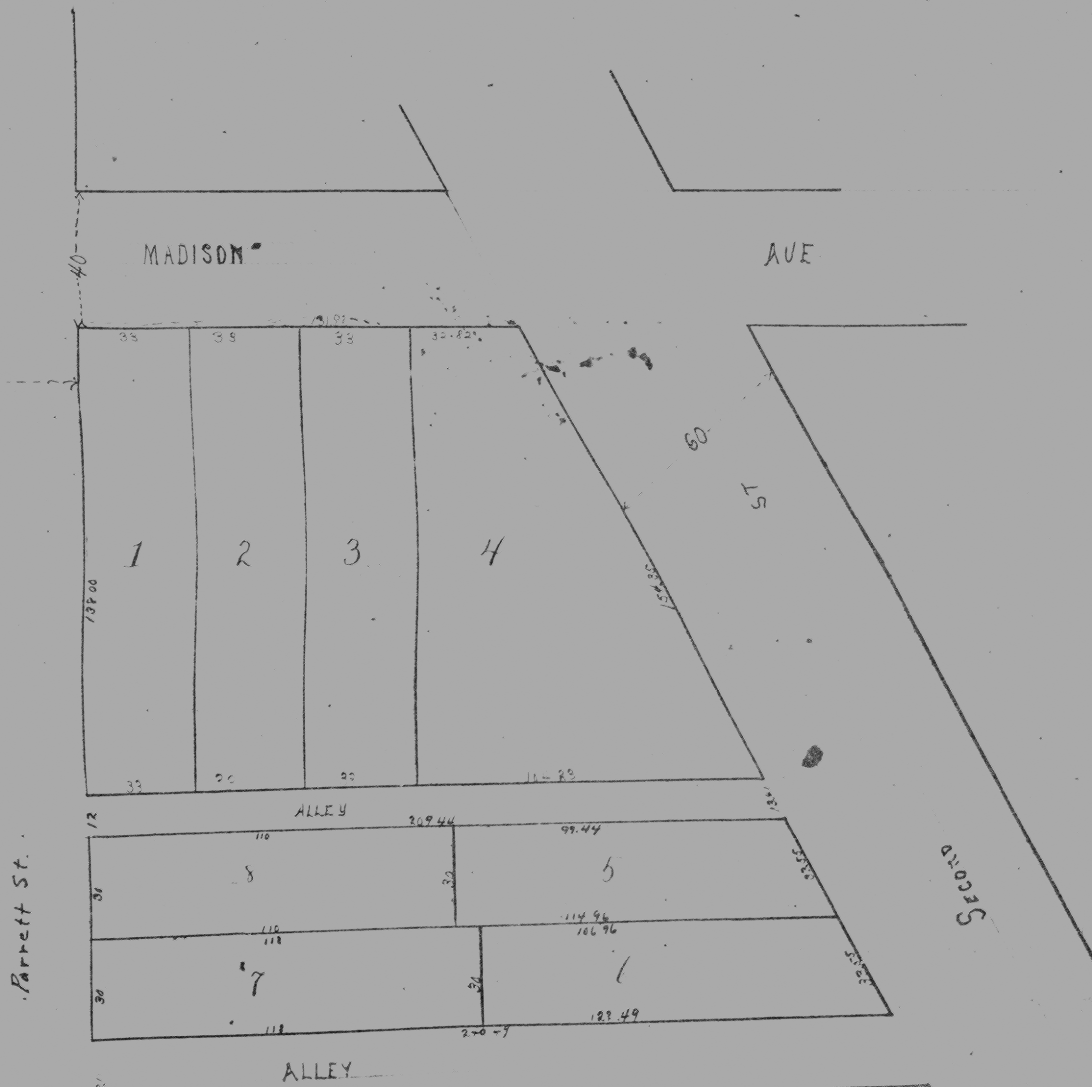


STORMS PLACE

A Subdivision of Lots 1, 2 and 4 of the Subdivision of Blocks 12 and 13 of
 Parrett's Subdivision of Government lots now part of the City of Emery, Indiana
 Dimensions of Lots and Widths of Streets and Alleys are shown on plat below
 North Storms



State of Indiana }
 Vanderburgh County }

Before me, Chas. Jenkins, Clerk in and for said county personally
 appeared this 17 day of November, 1888, John Storm, proprietor of the above described
 lots and acknowledged the correctness of this plat
 Witness my hand and official seal this day and date above written

Recorded Nov 17 1888
 Lewis S. McRoberts

Chas. Jenkins
 Clerk

