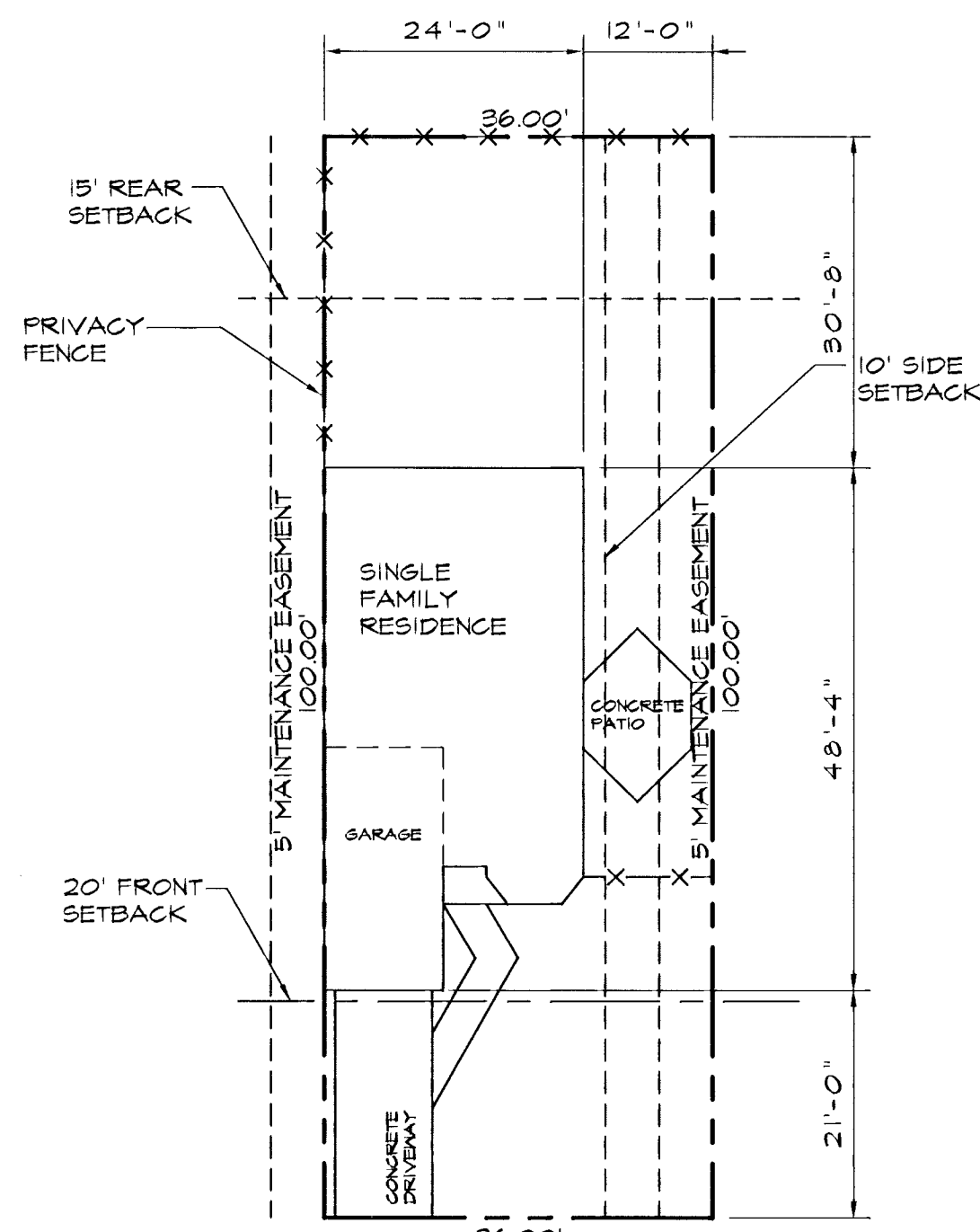
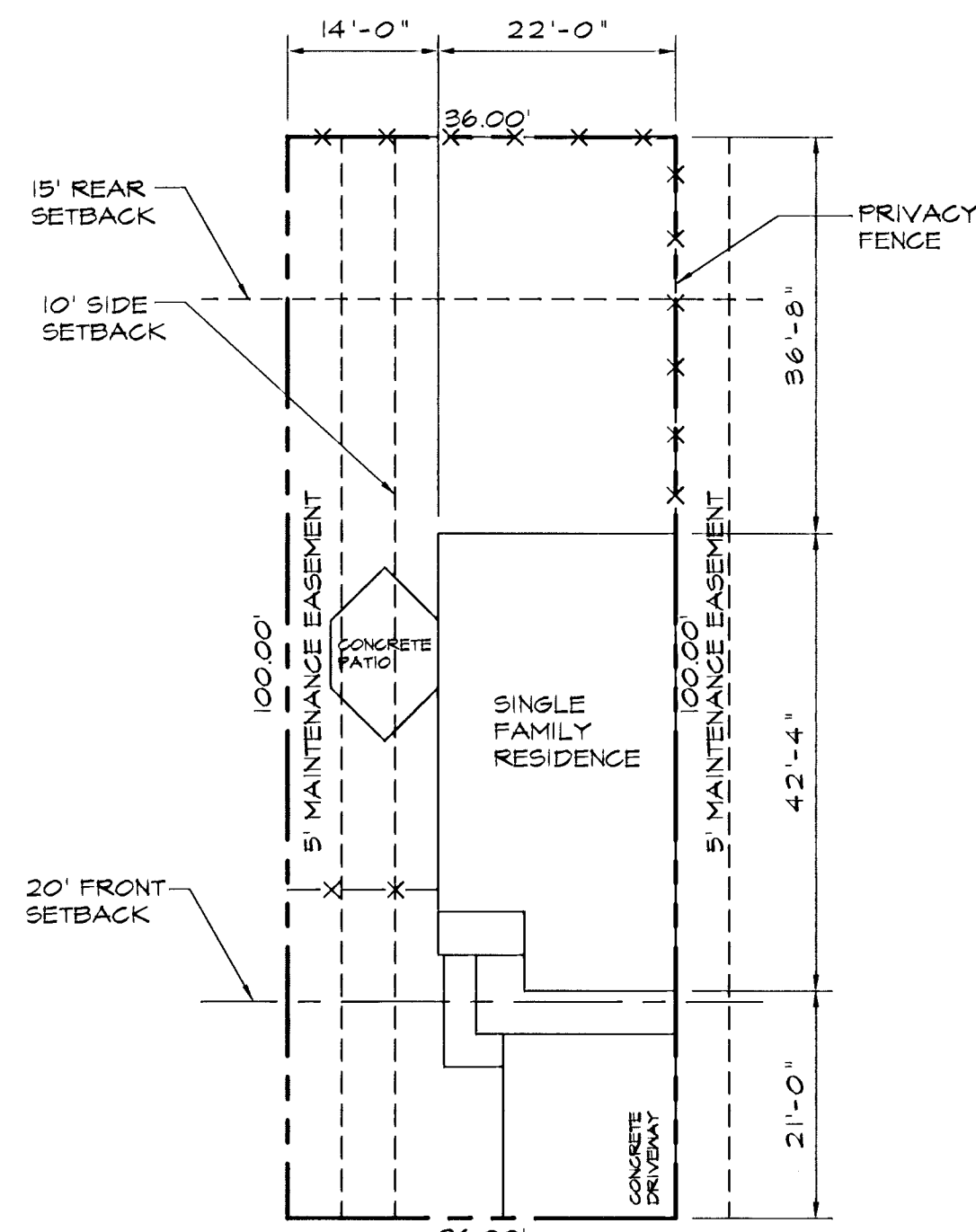


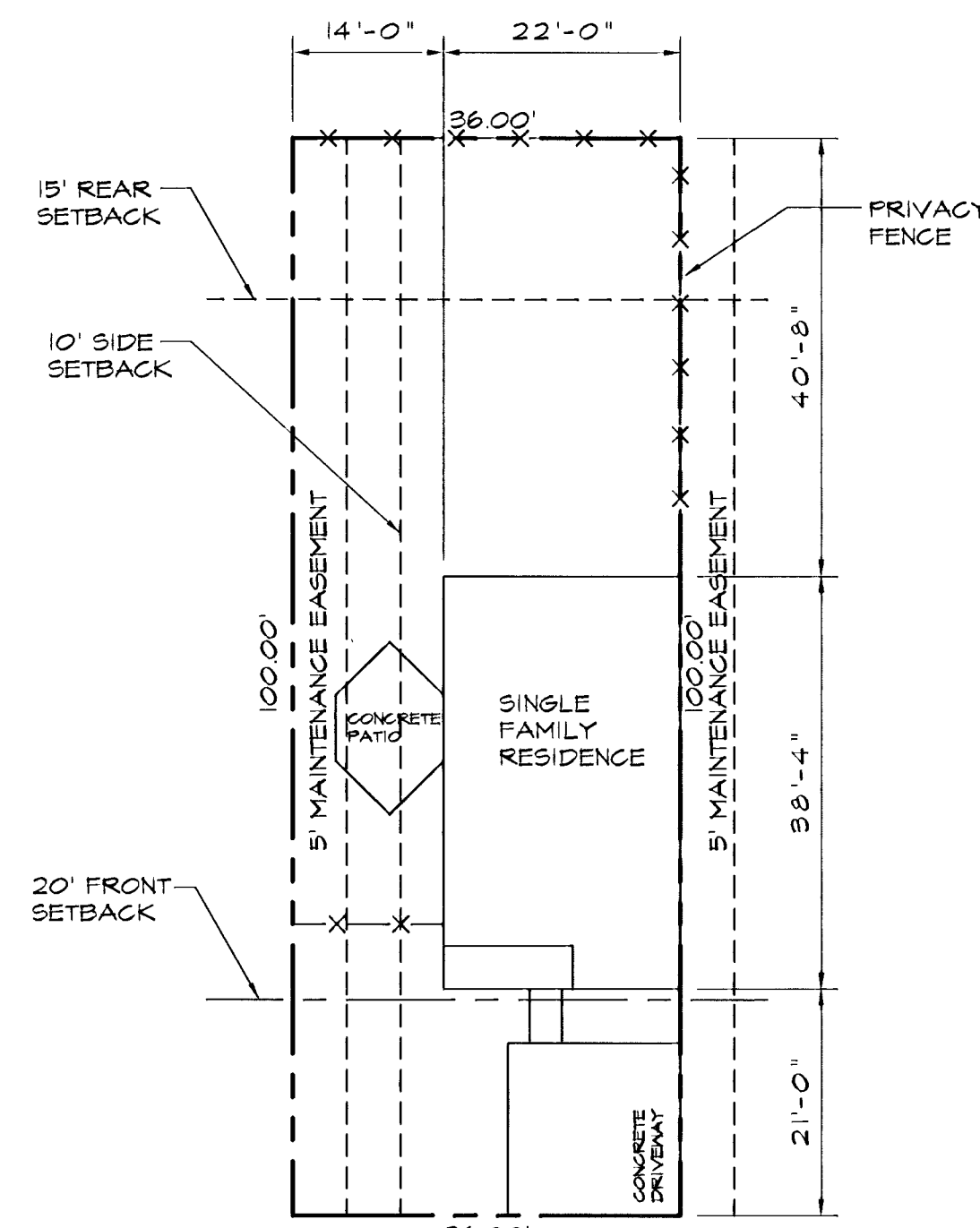
TRADEWIN



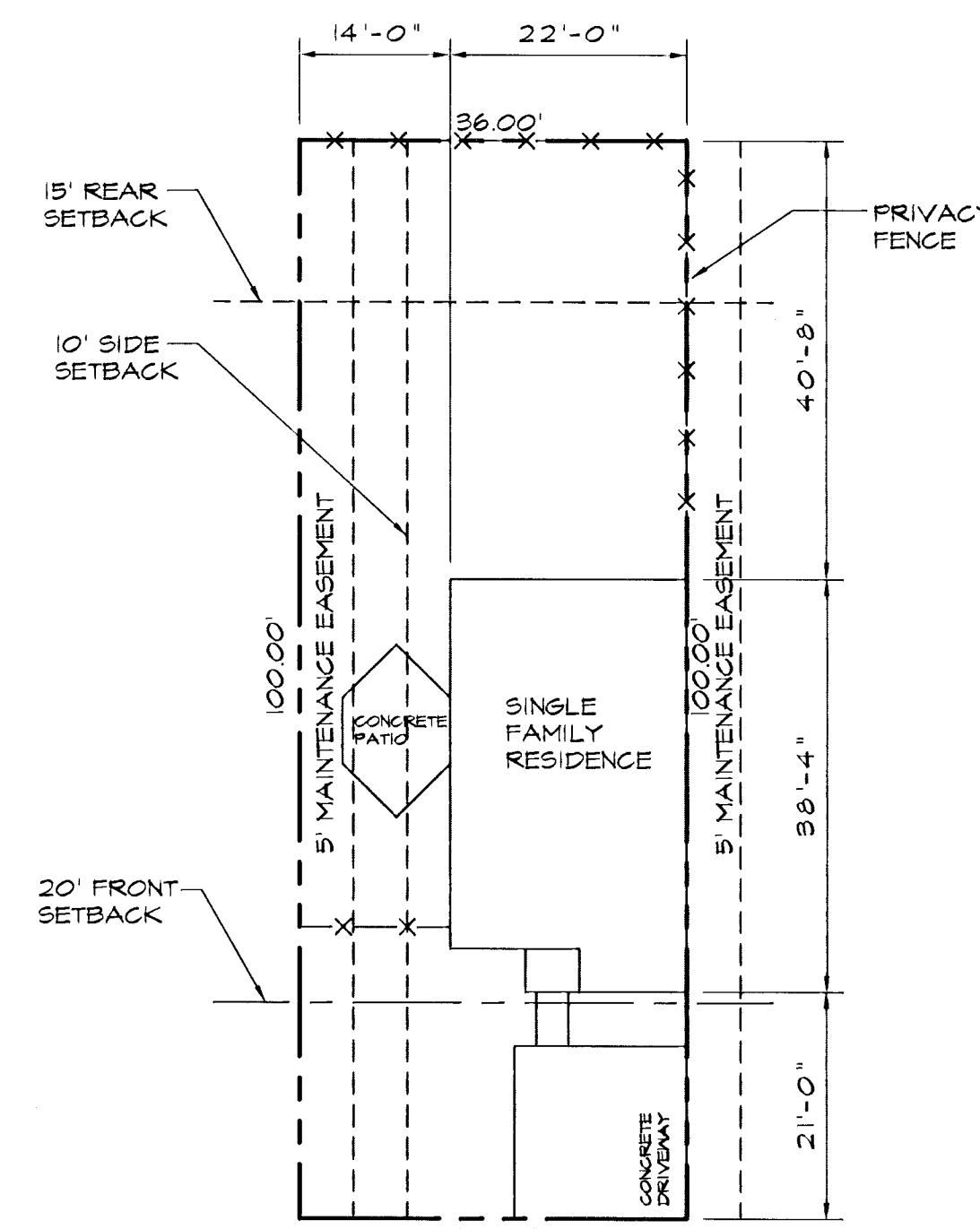
CHELSEA



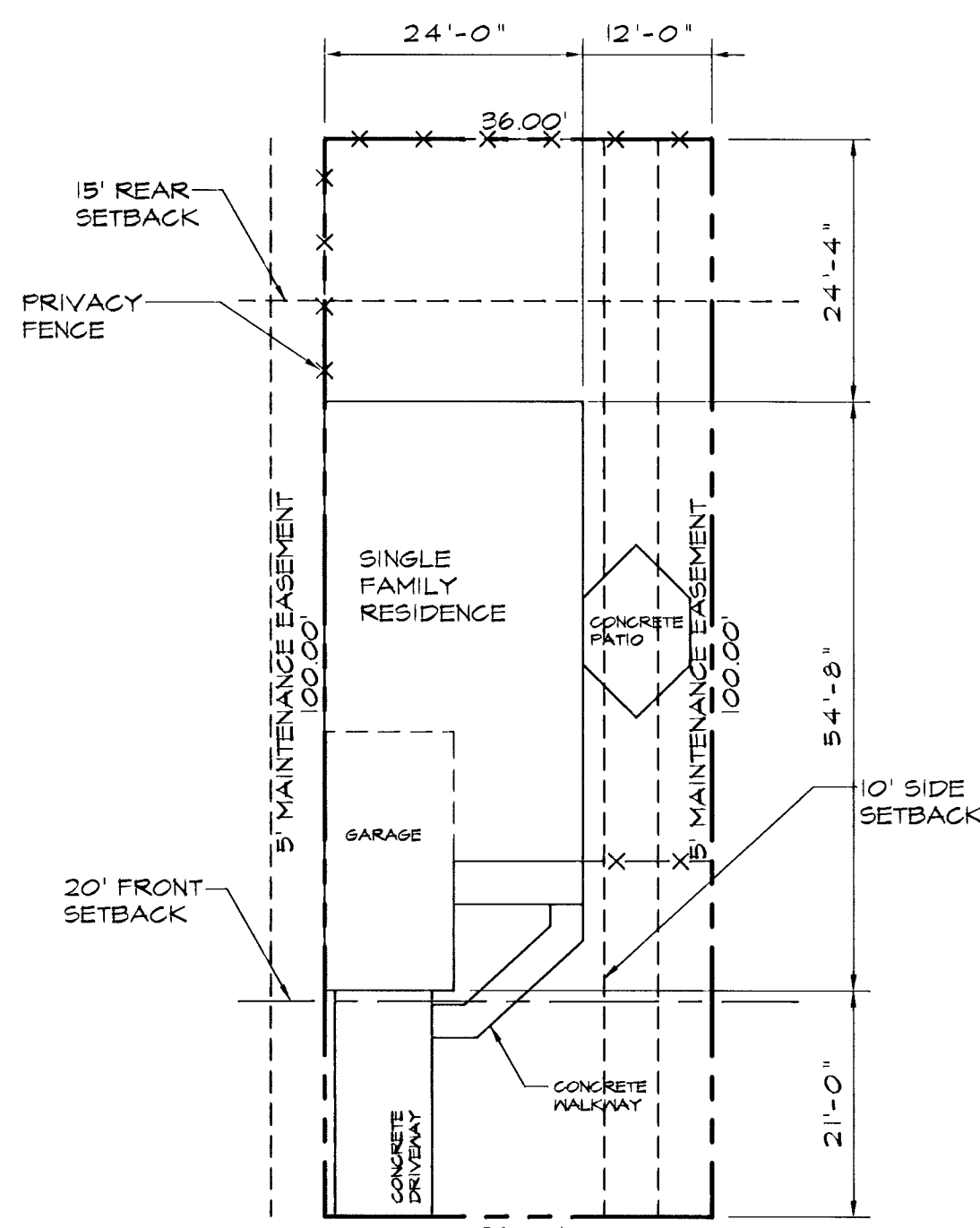
WINSTAR



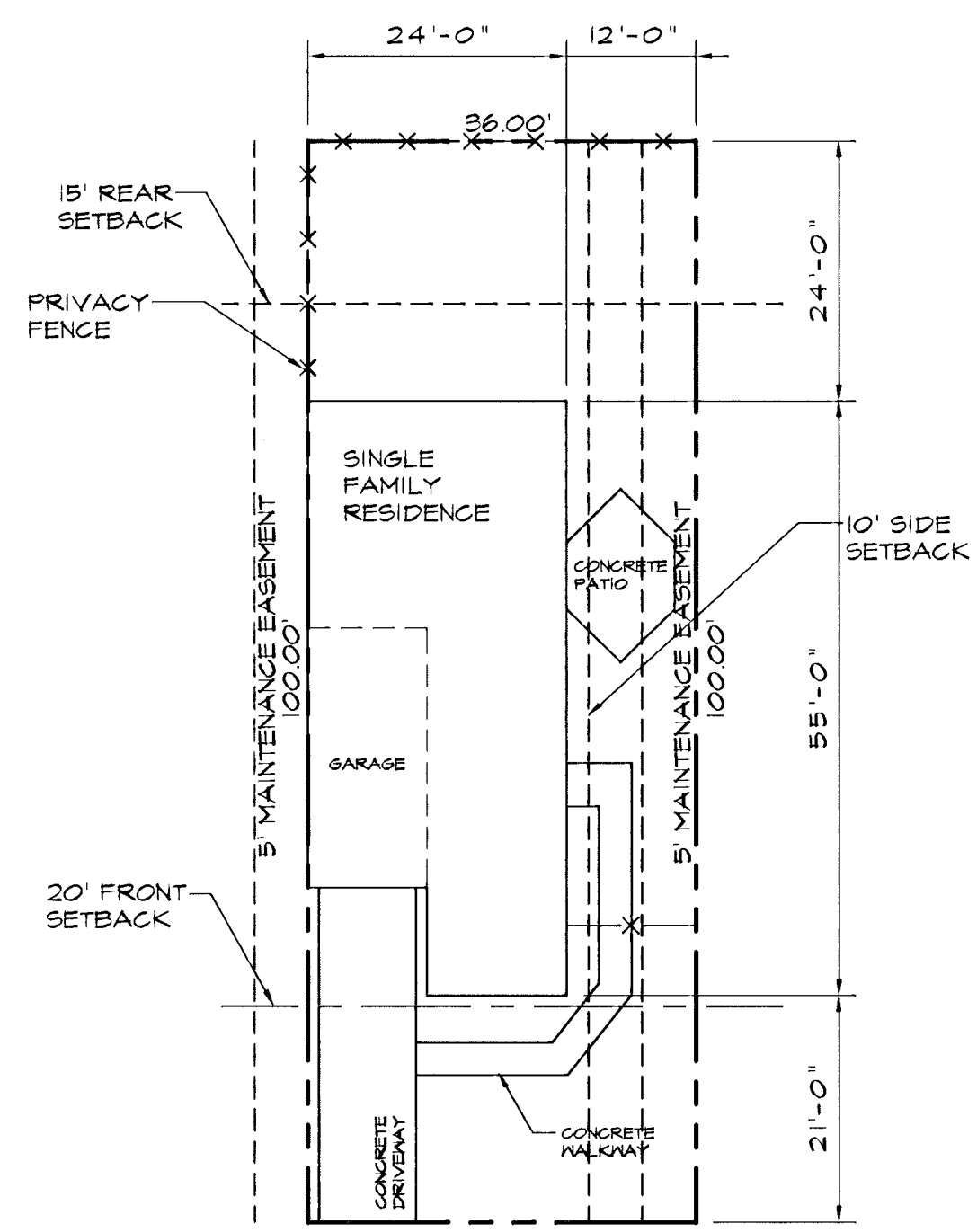
SUNDANCE "A"



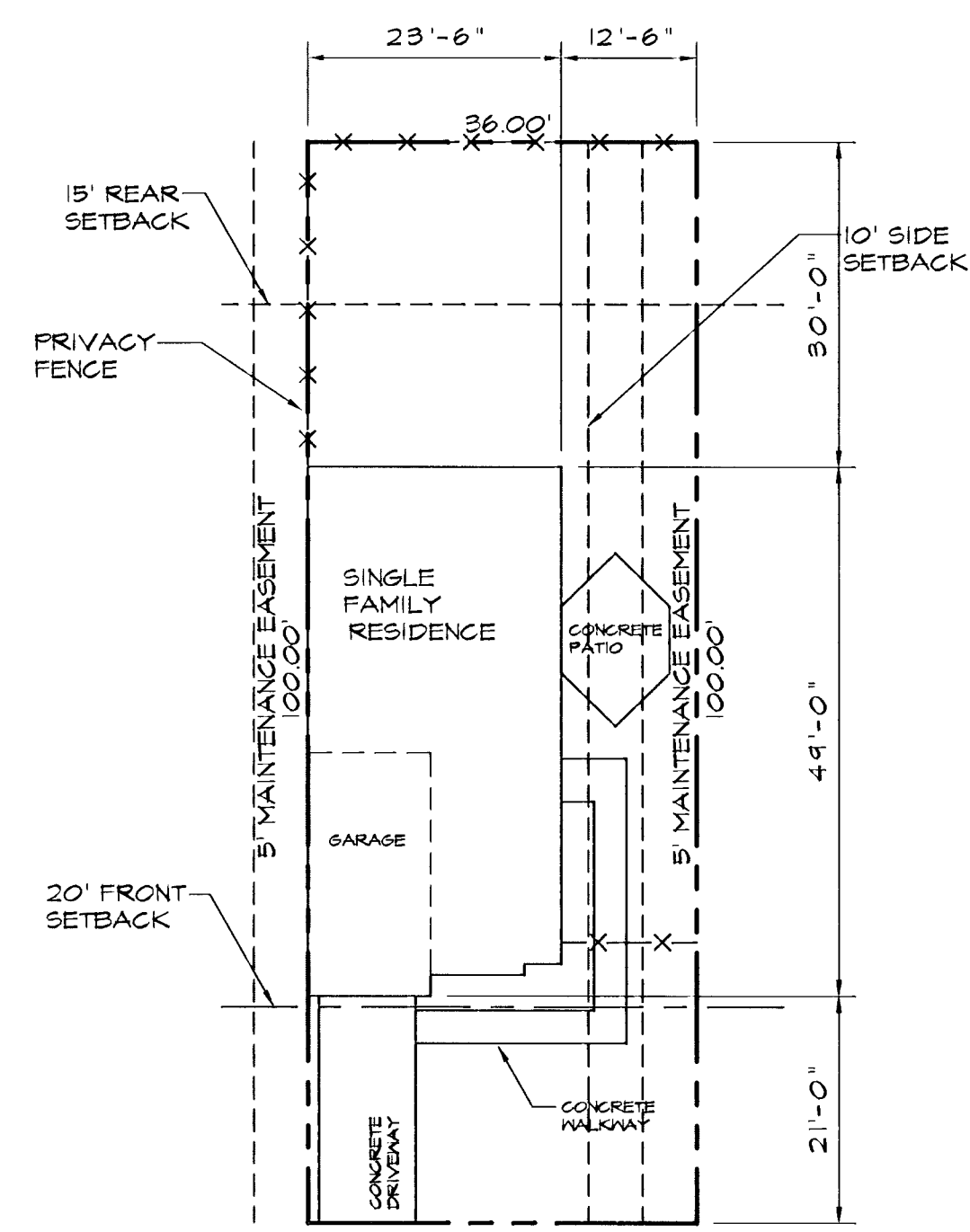
SUNDANCE "B"



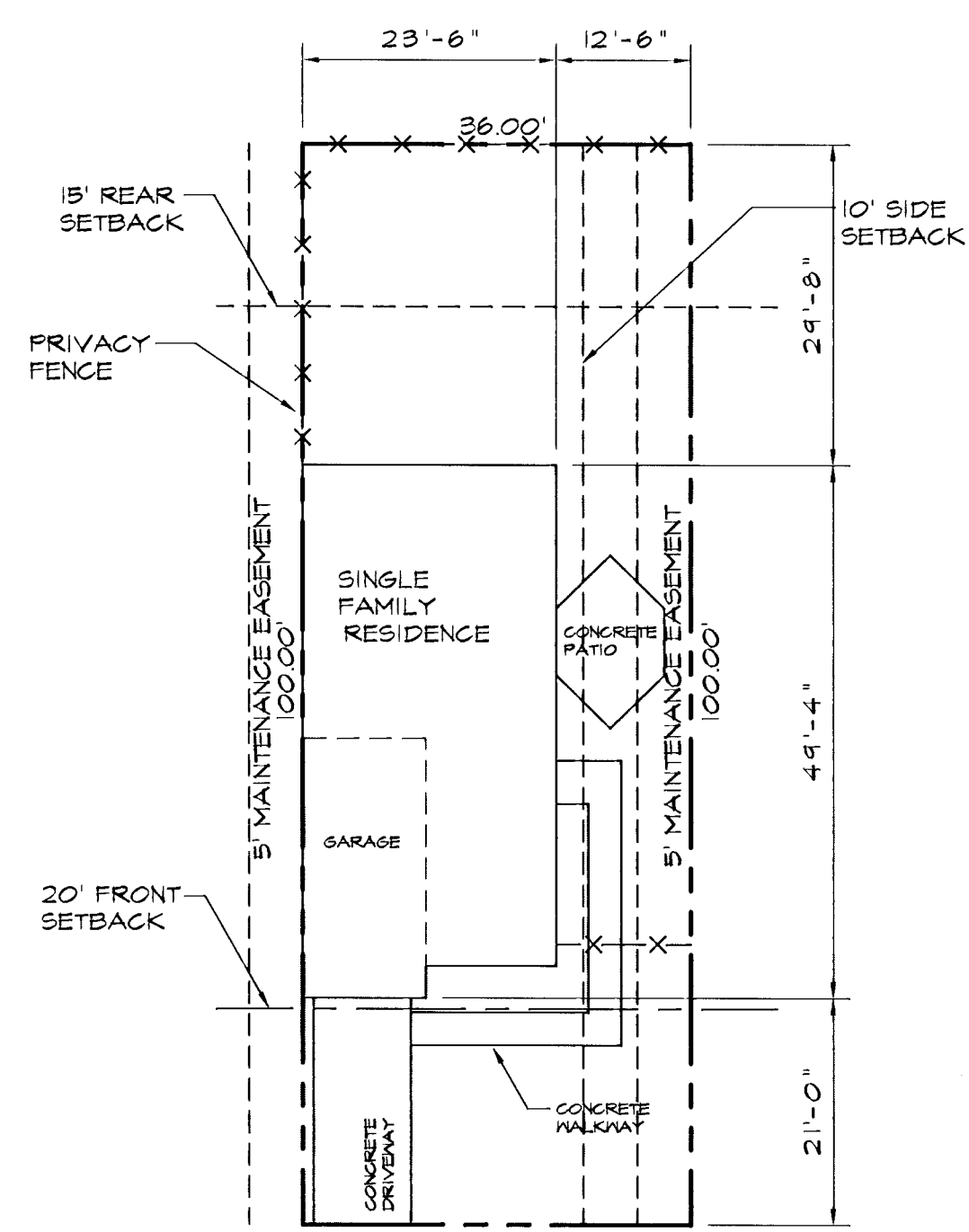
FOXFIRE



MONTEREY



STARDANCE



MOONDANCE

NOTE: FLOOR PLANS MAY BE EXPANDED AS LONG AS THEY DO NOT ENCROUGH ON THE PLATTED SETBACKS OR CAUSE THE HOUSE FOOTPRINT TO EXCEED 50% LOT COVERAGE.

THESE TYPICAL BUILDING SETBACKS GOVERN, EXCEPT WHERE ADDITIONAL OR GREATER SETBACKS ARE SHOWN ON THE PLAT.

MAXIMUM BUILDING HEIGHT 35'.

ACCESSORY BUILDINGS MUST BE IN CONFORMITY WITH APPLICABLE ZONING REGULATIONS AND CANNOT EXCEED (a) ONE HUNDRED (100) SQUARE FEET IN FLOOR AREA, OR (b) EIGHT (8) FEET IN HEIGHT.

Revisions		Description	
No.	By	Date	
1	ALC		
2	ALC		
3	ALC		
4	ALC		
5	ALC		

Morley and Associates, Inc.
Consulting Engineers/Surveyors/Architects
600 S.E. Sixth Street
Eugene, Oregon 97403
(503) 444-9685

Project: STONECREEK PUD
Sheet Title: TYPICAL SITE PLANS

Scale: 1/16" = 1'-0"	Drawn By: ALC	Job Number: 4255
Checked By: EJT	Date: 1/3/01	Filename: C-101-Section1-Phase1.DWG
Sheet Number: 2		

of: 2
App # 30-5-11