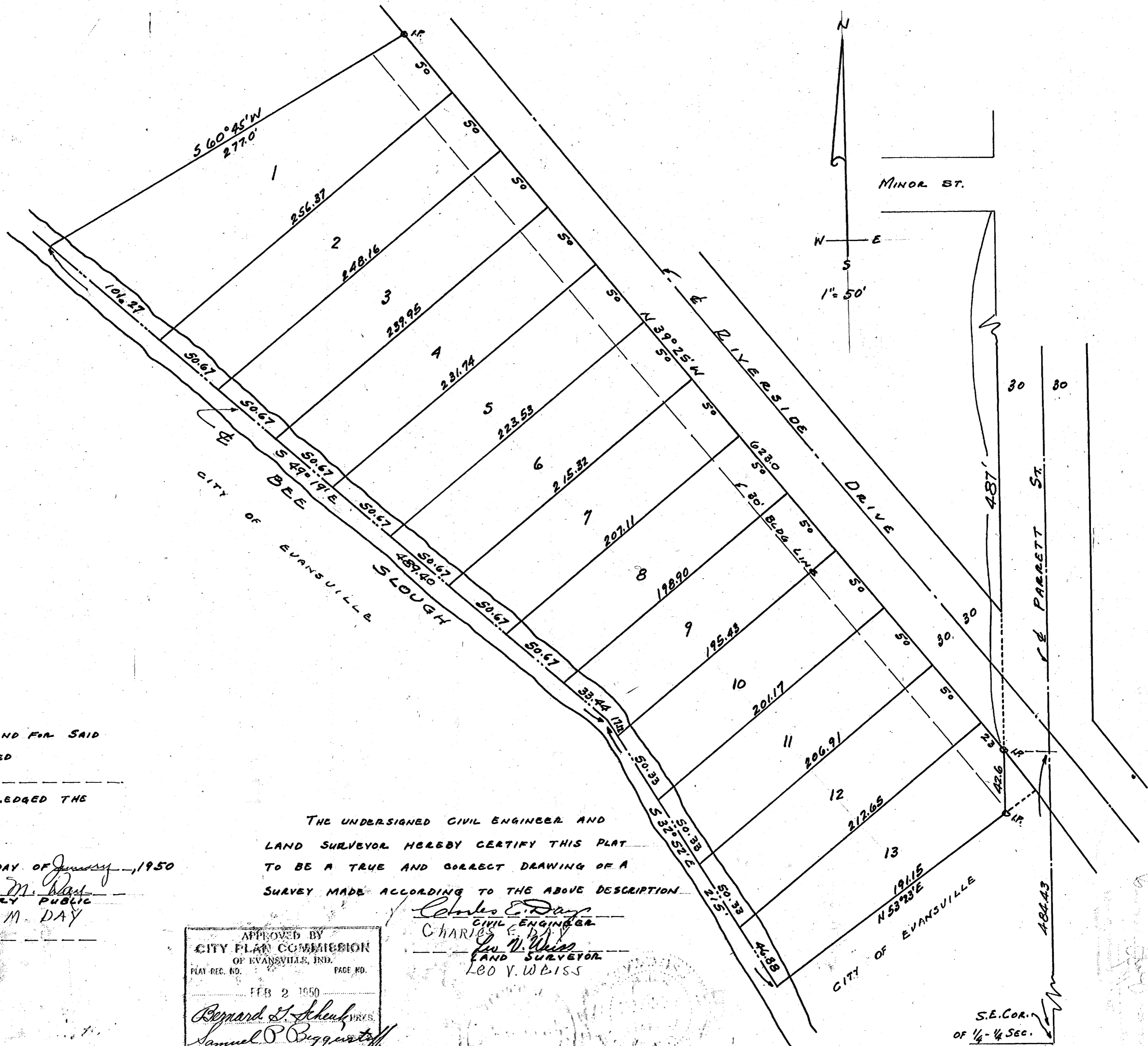


SHAWNEE TERRACE

A SUBDIVISION OF PART OF THE S.E. 1/4 - N.E. 1/4 OF SEC. 31-6-10 DESCRIBED AND BOUNDED AS FOLLOWS, TO WIT: COMMENCING AT THE POINT OF INTERSECTION OF THE WEST LINE OF PARRETT ST. EXTENDED WITH THE S.W. LINE OF RIVERSIDE DRIVE, SAID POINT BEING 487 FT. SOUTH OF THE SOUTH LINE OF MINOR ST. AND 30' WEST AND 487' NORTH OF THE S.E. COR. OF SAID 1/4-1/4 SEC.; THENCE N 39°25'W, 623.00 FT.; THENCE S 60°45'W, 277.00 FT. TO ϕ OF BEE SLOUGH; THENCE S 49°19'E ALONG SAID CENTER LINE 489.40 FT.; THENCE S 32°52'E ALONG SAID CENTER LINE 215.00 FT.; THENCE N 53°28'E, 191.15 FT. TO A POINT IN THE EXTENDED WEST LINE OF PARRETT ST.; THENCE NORTH ALONG SAID LINE 42.60 FT. TO THE PLACE OF BEGINNING.



STATE OF INDIANA }
 VANDELBURGH COUNTY } S.S.

BEFORE ME, A NOTARY PUBLIC, IN AND FOR SAID

STATE AND COUNTY, PERSONALLY APPEARED

Omar Goetz *Marion G. Goetz*
 OWNERS AND SUBDIVIDERS, AND ACKNOWLEDGED THE EXECUTION OF THIS PLAT.

WITNESS MY HAND AND SEAL THIS 19th DAY OF January, 1950

Lilybell M. Day
 NOTARY PUBLIC
 LILYBELL M. DAY

MY COMMISSION EXPIRES January 16, 1951

THE UNDERSIGNED CIVIL ENGINEER AND LAND SURVEYOR HEREBY CERTIFY THIS PLAT TO BE A TRUE AND CORRECT DRAWING OF A SURVEY MADE ACCORDING TO THE ABOVE DESCRIPTION

Charles E. Day
 CIVIL ENGINEER
 CHARLES E. DAY
 LAND SURVEYOR
 LEO V. WEISS

APPROVED BY
 CITY PLAN COMMISSION
 OF EVANSVILLE, IND.
 FEB 2 1950
Raymond J. Scheub
Samuel P. Biggs

Charles E. Day

S.E. COR. OF 1/4-1/4 SEC.

10:13 a
February 8th 1950

Plat
187

8