

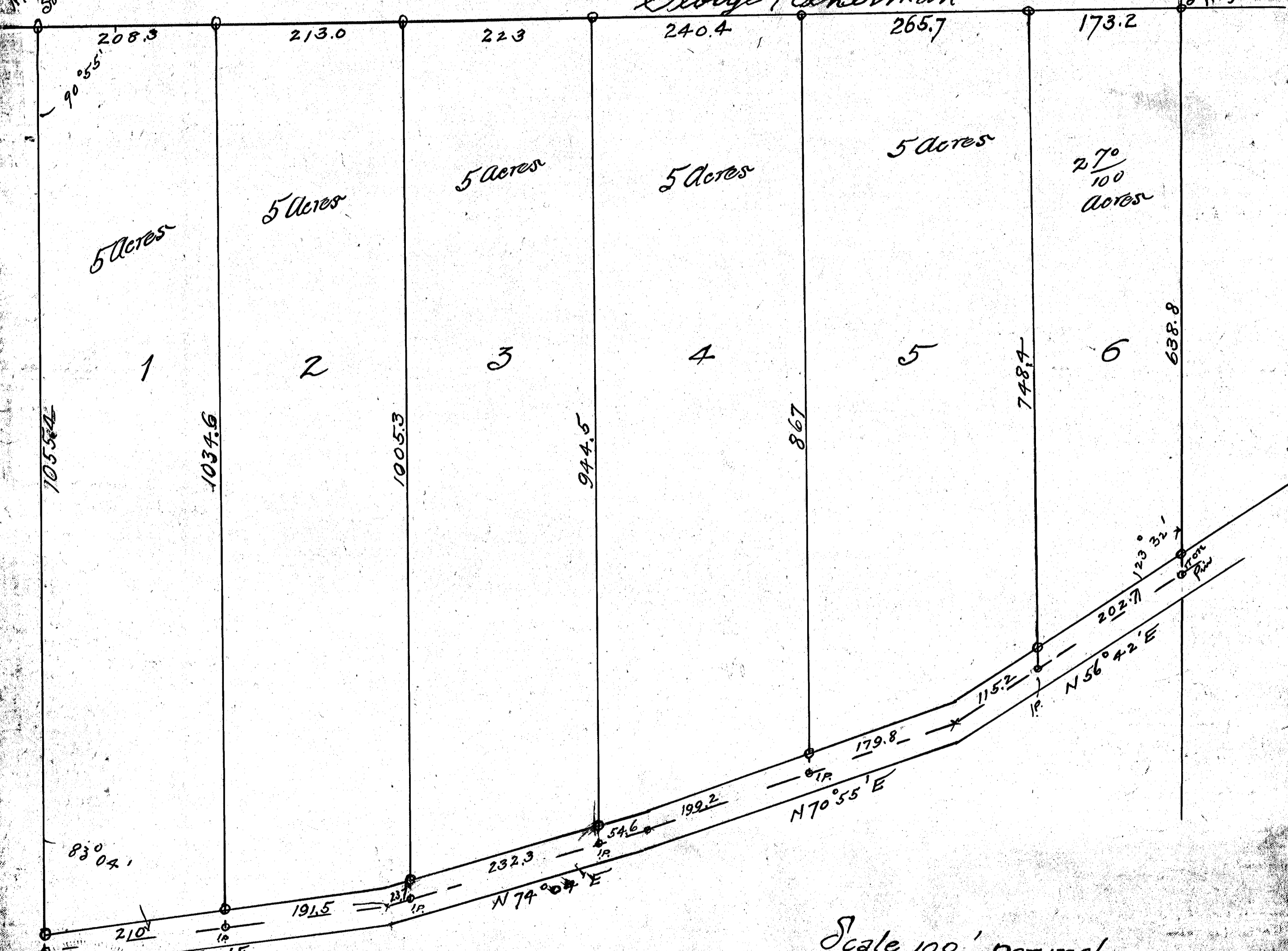
PLAT OF PART OF
 THE SOUTH EAST QUARTER
 OF THE SOUTH EAST QUARTER
 OF SECTION 15 TOWNSHIP
 SOUTH, RANGE 11 WEST
 SITUATE NORTH OF THE CENTER
 OF ROAD.

George Reheman

1/4 Cor. SE 1/4 SE 1/4
 Stone 15-5-11

Stone Cor. NE 1/4 SE 1/4
 15-5-11

922 a
 9th Aug. 6
 Plat A:



5 Acres

5 Acres

5 Acres

5 Acres

5 Acres

270/100
 Acres

1

2

3

4

5

6

83°04'

N 83°04' E

N 79°04' E

N 70°55' E

N 56°42' E

Scale 100' per inch

Saunders
 CIVIL ENGINEERS & SURVEYORS

EVANSVILLE, INDIANA

JULY, 1926

State of Indiana }
 Vanderburgh County } ss
 Before me a notary public in and for said
 County and State personally appeared *George Reheman*
 and acknowledged the execution of this plat
 Witness my hand and notarial seal this 9th day of August 1926

Commission Expires
 March 15, 1930

Notary Public