

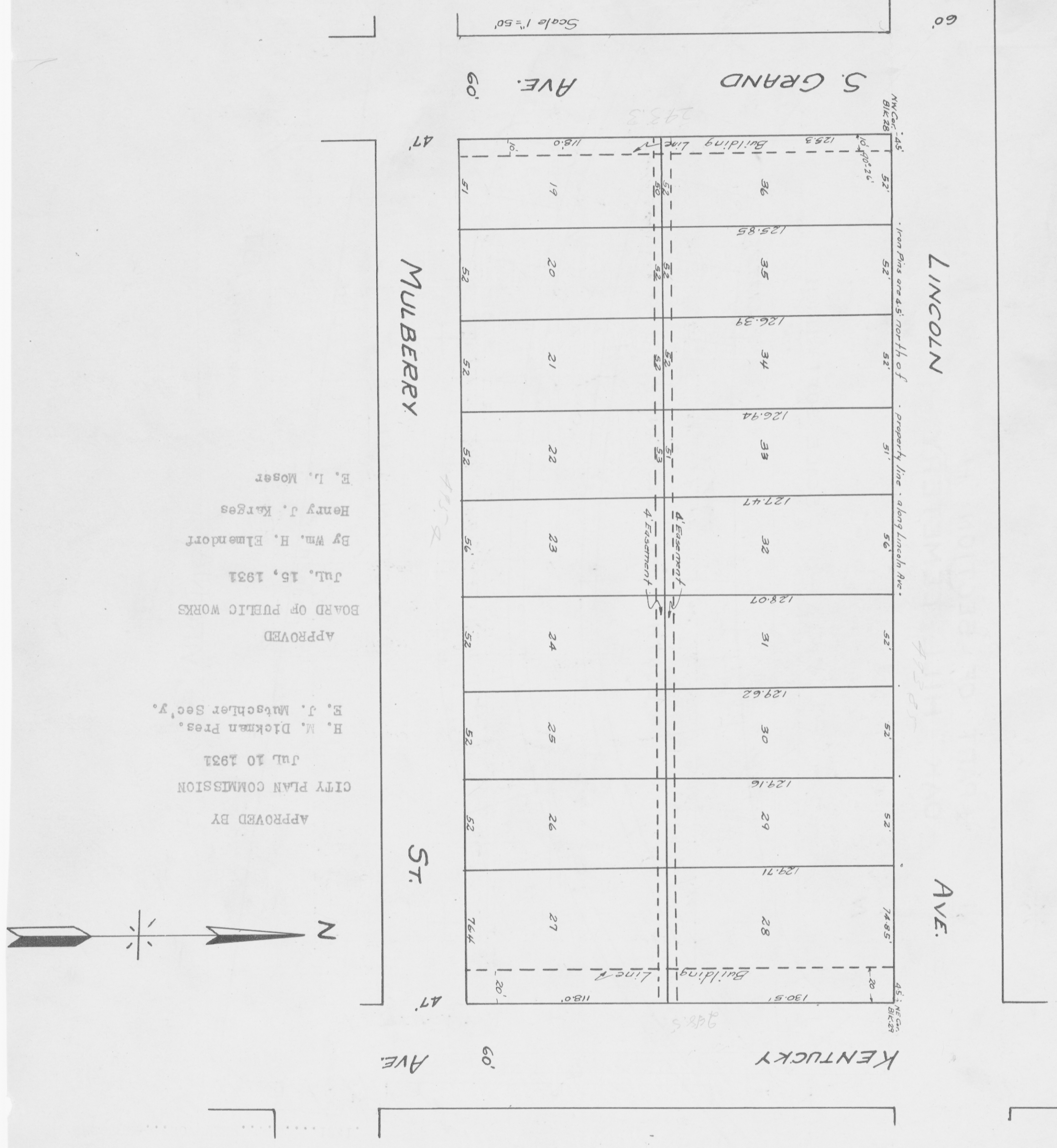
PLAT OF NIEDNAGEL'S SUBDIVISION

Lots 19-36 Inc. of PARTS OF BLOCKS 28 & 29

IN COLUMBIA ADDITION

Beginning at the N.E. Corner of Block 29 and running West 493.65 feet to the N.W. Corner of Block 28, thence south 243.3 feet, thence east 495.4 feet, thence north 248.5 feet to the place of beginning. The dimensions of the lots are as shown on this plat. Iron pins mark the corners of all lots except as noted on plat.

#47113



APPROVED BY
CITY PLAN COMMISSION
JUL 10 1931
H. M. Dickman Pres.
E. J. Matschler Sec'y.

APPROVED
BOARD OF PUBLIC WORKS
JUL 16, 1931
By Wm. H. Elmendorf
Henry J. Karges
E. L. Moser

ALL Lots in this subdivision are classified under the Zone Ordinance in the "A" Residence Use District-"A" Height and area district. Private restrictions applying to lots in this plat appear in the deed records. State of Indiana, Vanderburgh Co. S.S. Before me a Notary Public in and for said state and county personally appeared Emil H. Niednagel, Sarah A. Niednagel & Joseph Tying and acknowledged the execution of the above. Witness my hand and notarial seal this 27 day of June, 1931. My commission expires Nov. 20, 1931 (SEAL) Jessale Rohrscholtz, Notary Public

Recorded... July... 22... 1931

Survey by A. Pfeiffer & J. P. Hill Engrs.

Geo. D. Gimborsch R.R.C.