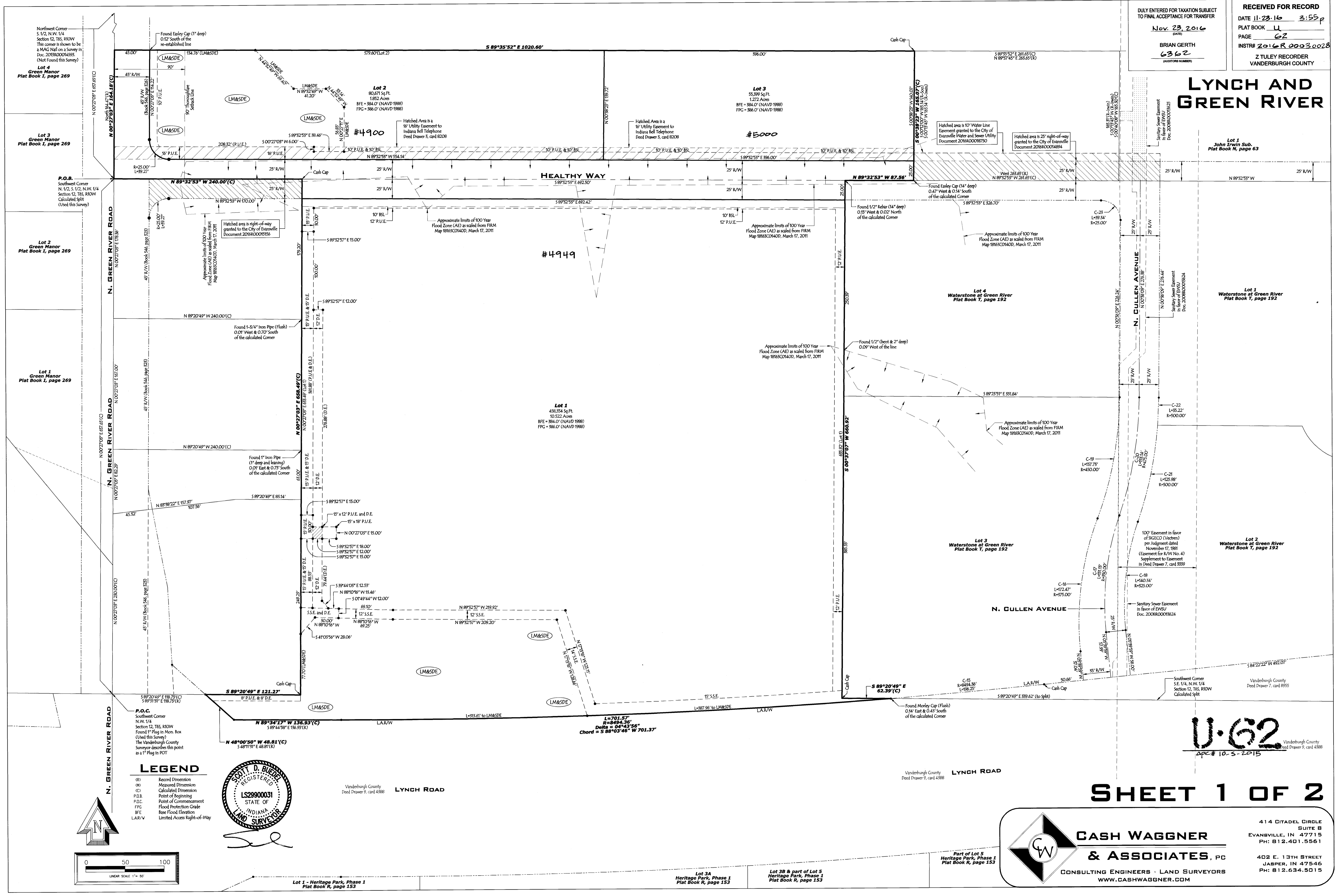


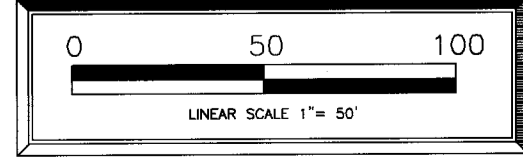
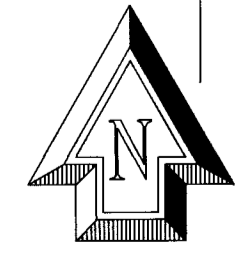
DULY ENTERED FOR TAXATION SUBJECT TO FINAL ACCEPTANCE FOR TRANSFER
 Nov. 23, 2016
 BRIAN GERTH
 6362
 RECEIVED FOR RECORD
 DATE 11-23-16 3:55p
 PLAT BOOK U
 PAGE 62
 INSTR# 2016R 00030028
 Z TULEY RECORDER
 VANDERBURGH COUNTY

LYNCH AND GREEN RIVER



LEGEND

- (R) Record Dimension
- (M) Measured Dimension
- (C) Calculated Dimension
- P.B. Point of Beginning
- P.O.C. Point of Commencement
- FPG Flood Protection Grade
- BFE Base Flood Elevation
- LAR/V Limited Access Right-of-Way



Lot 1 - Heritage Park, Phase 1
 Plat Book R, page 153

Lot 3A
 Heritage Park, Phase 1
 Plat Book R, page 153

Lot 3B & part of Lot 5
 Heritage Park, Phase 1
 Plat Book R, page 153

CASH WAGNER & ASSOCIATES, PC
 CONSULTING ENGINEERS - LAND SURVEYORS
 WWW.CASHWAGNER.COM

414 CITADEL CIRCLE
 SUITE B
 EVANSVILLE, IN 47715
 PH: 812.401.5561
 402 E. 13TH STREET
 JASPER, IN 47546
 PH: 812.634.5015

SHEET 1 OF 2

U-62
 APC# 10-5-2015
 Vanderburgh County
 Deed Drawer 7, card 4388