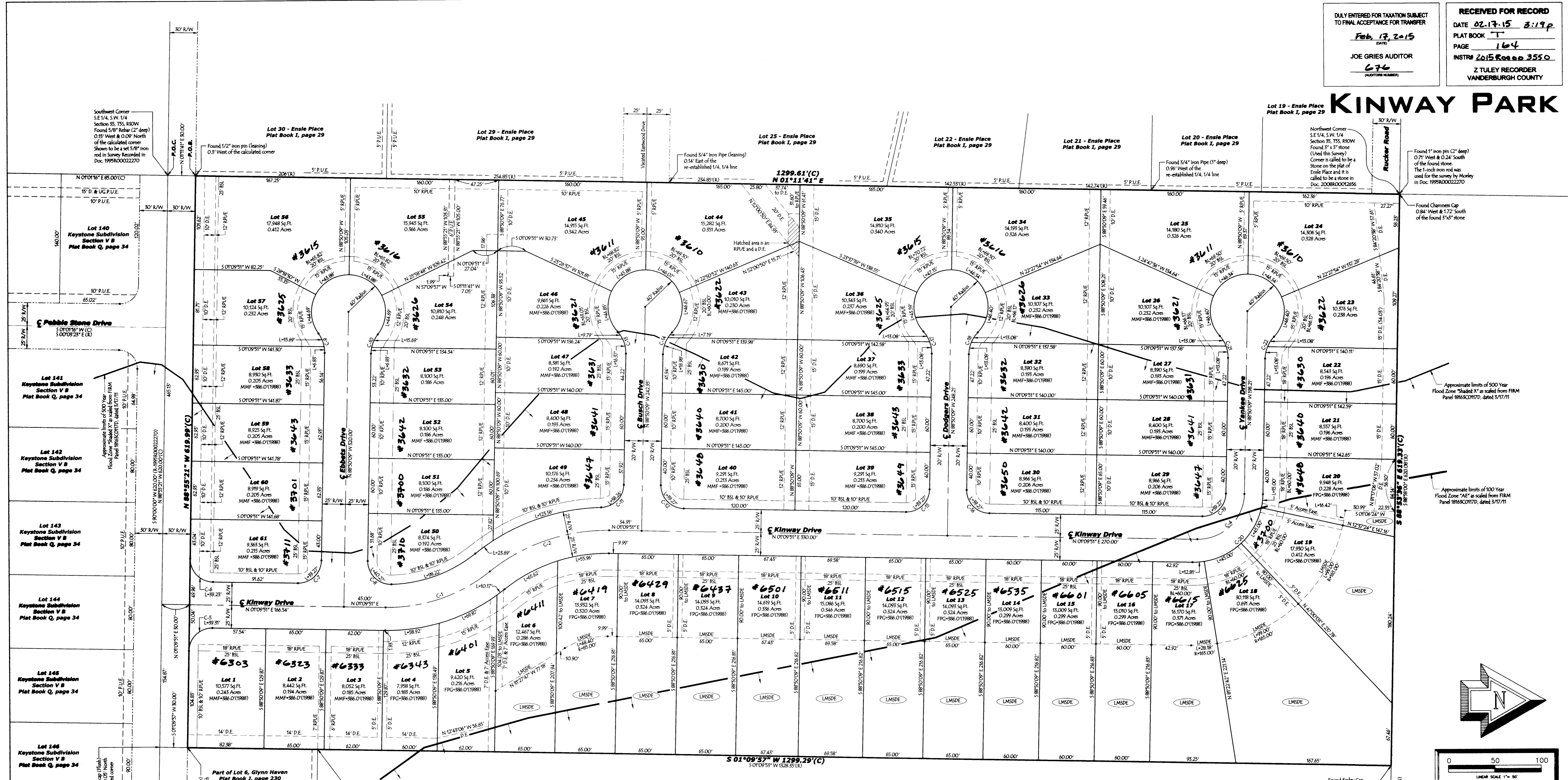


# KINWAY PARK



**Curve Table**

NUMBER	DELTA ANGLE	CHORD DIRECTION	TANGENT	RADIUS	ARC LENGTH	CHORD LENGTH
C-1	39°48'52"	N 18°44'25" W	65.36	175.00	121.59	119.16
C-2	39°48'52"	N 18°44'25" W	72.42	200.00	138.96	136.18
C-3	90°00'00"	N 43°50'09" W	50.00	50.00	78.54	70.71
C-4	90°05'12"	N 43°52'45" W	25.04	25.00	39.31	35.38
C-5	89°54'48"	N 46°07'15" E	24.96	25.00	39.23	35.33
C-6	90°00'00"	N 43°50'09" W	25.00	25.00	39.27	35.36
C-7	92°17'33"	S 45°01'05" W	26.02	25.00	40.27	36.06
C-8	38°52'12"	S 72°43'45" W	11.67	35.00	22.52	22.14
C-9	38°52'12"	N 70°24'03" W	11.67	35.00	22.52	22.14
C-10	67°41'16"	N 44°59'31" W	24.01	25.00	38.26	34.63
C-11	90°00'00"	S 46°09'51" W	25.00	25.00	39.27	35.36
C-12	42°50'00"	S 69°44'51" W	13.73	35.00	26.17	25.56
C-13	42°50'00"	N 67°25'09" W	13.73	35.00	26.17	25.56
C-14	42°50'00"	N 67°25'09" W	13.73	35.00	26.17	25.56
C-15	90°00'00"	N 43°50'09" W	25.00	25.00	39.27	35.36
C-16	90°00'00"	S 46°09'51" W	25.00	25.00	39.27	35.36
C-17	42°50'00"	S 69°44'51" W	13.73	35.00	26.17	25.56
C-18	42°50'00"	N 67°25'09" W	13.73	35.00	26.17	25.56
C-19	90°00'00"	N 43°50'09" W	25.00	25.00	39.27	35.36
C-20	90°00'00"	N 43°50'09" W	75.00	75.00	117.81	106.07
C-21	42°50'00"	S 69°44'51" W	13.73	35.00	26.17	25.56
C-22	42°50'00"	N 67°25'09" W	13.73	35.00	26.17	25.56

**T-164**  
 APC # 7-5-2014

**AFFIRMATION STATEMENT**  
 I AFFIRM, UNDER THE PENALTIES OF PERJURY, THAT I HAVE TAKEN REASONABLE CARE TO REDACT EACH SOCIAL SECURITY NUMBER IN THIS DOCUMENT, UNLESS REQUIRED BY LAW.  
 SIGNATURE: *[Signature]*  
 PRINTED NAME: SCOTT D. BUEDEL

**CASH WAGNER & ASSOCIATES, PC**  
 CONSULTING ENGINEERS - LAND SURVEYORS  
 WWW.CASHWAGNER.COM  
 414 CITADEL CIRCLE SUITE B EVANSVILLE, IN 47715 PH: 812.401.5561  
 332 THIRD AVENUE SUITE 13 JASPER, IN 47546 PH: 812.634.5015

**LEGEND**  
 (R) Record Dimension  
 (M) Measured Dimension  
 (C) Calculated Dimension  
 (P.B.) Point of Beginning  
 (P.C.) Point of Commencement  
 (F.P.C.) Flood Protection Grade  
 (M.F.F.) Minimum Finished Floor

**SHEET 1 OF 2**