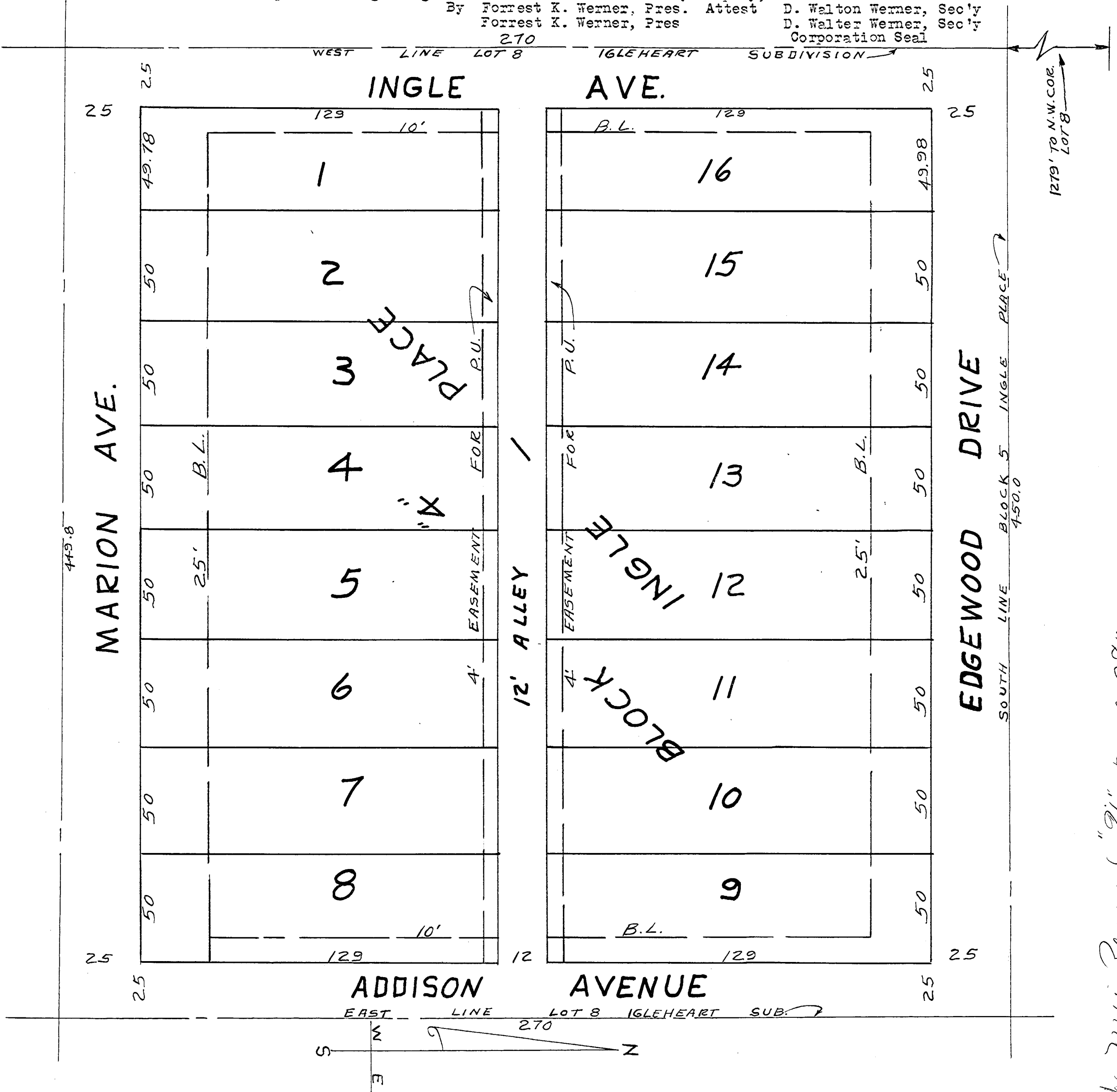


#162280

BLOCK 4 - INGLE PLACE

Being a part of Lot 8 of Igleheart Subdivision of the Northwest Quarter of Section 26, Township 6 South, Range 11 West, described as follows:— Commencing at a point in the West line of said Lot 8, 1279 feet South of the Northwest corner thereof; thence East along the South line of Block 5, Ingle Place 450 feet to a point in the East line of said Lot 8, thence South along the said East line 270 feet; thence West 449.8 feet to a point in the West line of said Lot 8; thence North along the said West line 270. feet to the place of beginning

Werner Realty Company, Inc.
 By Forrest K. Werner, Pres. Attest D. Walton Werner, Sec'y
 Forrest K. Werner, Pres D. Walter Werner, Sec'y
 Corporation Seal



State of Indiana SS
 Vanderburgh County

Personally appeared before me the undersigned Notary Public in and for said County and State, the Werner Realty Co. Inc. by its President, Forrest K. Werner, and Secretary, D. Walton Werner, who are known by me to be such officers respectively and who are the owners and subdividers of this plat and who acknowledge the execution of the foregoing plat to be the voluntary act and deed of said Corporation.

WITNESS my hand and seal this 13th day of August, 1952

Cora Wehrley, Notary Public
 Cora Wehrley, Notary Public

SEAL
 My commission expires 10-22-55

The undersigned Civil Engineer certifies this plat to be a true and correct drawing of a survey made in accordance with the description hereon.

Sam Biggerstaff, C. E. 7-1-52 Leo V. Weiss
 Sam Biggerstaff, C. E. 7-1-52 Leo V. Weiss

SEAL
 Samuel P. Biggerstaff, Professional Engineer
 Registered # 5566, State of Indiana

SEAL
 Leo V. Weiss, Professional Engineer
 Registered # 5961, State of Indiana

*For Cancellation of Restriction 11
 of Restrictions & Protective
 Covenants.
 See Min. X pg. 492*

RECEIVED FOR RECORD *Sept 2*, 1952, at

H. *Paul C. Padgett*

Recorder Vanderburgh County

For Restrictions see Min. Record "G" page 387.